



Contact

The voice for rural Alberta

Member Bulletins

AAMDC Launches New Election Website

The website features member resources, candidate resources, key rural issues and AAMDC publications which are relevant to rural Albertans.

[Learn more...](#)

AAMDC Prepares for Alberta Provincial Election

The AAMDC has launched the “Where It All Starts” campaign to make sure candidates know that rural Alberta is the fuel that runs the provinces economic engine.

[Learn more...](#)

AHS Medical First Responder Program Launch

Alberta Health Services (AHS) is officially launching the Medical First Responder (MFR) Program throughout April 2015.

[Learn more...](#)

Announcements

Alberta Municipal Affairs Gas Tax Fund Statement of Funding and Expenditures

The reporting requirement outlined in the Gas Tax Fund Program Guidelines states that SFEs are due May 1, annually. The SFE for 2014 GTF funding allocated to your municipality is due May 1, 2015.

[Learn more...](#)

Support Available for Municipalities to Hold an Electronics and Paint Recycling Round-up



[Follow on Twitter](#)



[Forward to a Friend](#)



**Rural Alberta:
Where It All Starts**

Get the latest Alberta election resources at
election.aamdc.com

Job Postings

AAMDC

[PFA Canada Manager](#)

[Insurance and Risk Advisor](#)

Lacombe County

[Financial Officer](#)

Town of Okotoks

[Peace Officer](#)

Red Deer County

[Information Specialist
\(Summer Position\)](#)

County of Vermilion River

[Director of Public Works](#)

Funding is provided to help offset costs associated with the set-up and running of a round-up including advertising, promotions, and event expenses. Municipalities will also receive incentives for the electronics and paint material dropped off at the event. [Learn more...](#)

News

- [Alberta election 2015](#): Ballots to be cast May 5
- 'Very large' [infrastructure announcements](#) on the horizon: industry minister
- [A brief history of elections](#) in Alberta since Lougheed
- Rocky Mountains could [lose 90 per cent of its glaciers](#) by 2100
- [Encounters with cougars](#) on the rise across Alberta
- [Taxpayers hit](#) with double-bogey for flood-damaged golf course
- Lamphier: [Fossil fuel divestment](#) push ramps up
- [Community flood mitigation projects](#) help keep people and property safe
- Seniors minister vows to [install sprinkler systems](#) in all seniors lodges and long-term care spaces.

City of Leduc

[Manager, Communications & Marketing Services](#)

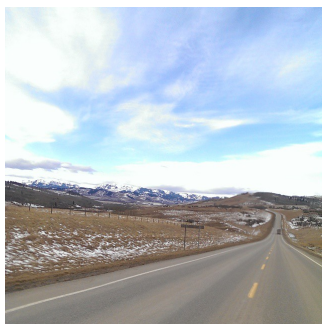
Click [here](#) to view all current job postings

Upcoming Events

District 3 Meeting

April 20, 2015

Rural View



The MD of Ranchland captured by AAMDC Aggregated Business Service's Victor Tabamo.

Local Links

[Alberta Water Portal](#)

[Historical Society of Alberta](#)

[Community Physician Attraction & Retention](#)

Want to have your link featured in **Local Link**? [Let us know.](#)

Did You Know?

Maligne Lake in Jasper National Park is the second largest glacier-fed lake in the world

Share an interesting fact or story about your municipality with us; email aamdc@aamdc.com.

Share your community on
Contact! Email your images
to aamdc@aamdc.com.

[follow on Twitter](#) | [follow on LinkedIn](#) | [forward to a friend](#)

2510 Sparrow Drive - Nisku, AB T9E 8N5

Phone 780.955.3639 Fax 780.955.3615 aamdc.com

[unsubscribe from this list](#) | [update subscription preferences](#)