



***The North Saskatchewan  
Watershed Alliance  
Overview and Highlights 2023***

**COUNCIL PRESENTATION**



**NSWA**

**NORTH SASKATCHEWAN  
WATERSHED ALLIANCE**



# ***Territorial Acknowledgement***

The North Saskatchewan Watershed Alliance acknowledges that the traditional land on which our watershed resides is in Treaty 6 Territory, Treaty 8 Territory, and the Métis Homeland. We deeply respect and wish to honour the diverse Indigenous Peoples whose ancestors' footsteps have marked this territory since time immemorial, including the Nêhiyawak/Cree, Denesuliné/Dene, Anishinaabe/Saulteaux, Nakota Isga/Nakota Sioux, and the Niitsitapi/Blackfoot peoples. We further acknowledge this territory as the Métis homeland and the home of one of the largest communities of Inuit south of the 60th parallel.

# OVERVIEW

1. About NSWA
2. Project Highlights
3. Benefits of Partnership





# NSWA

NORTH SASKATCHEWAN  
WATERSHED ALLIANCE

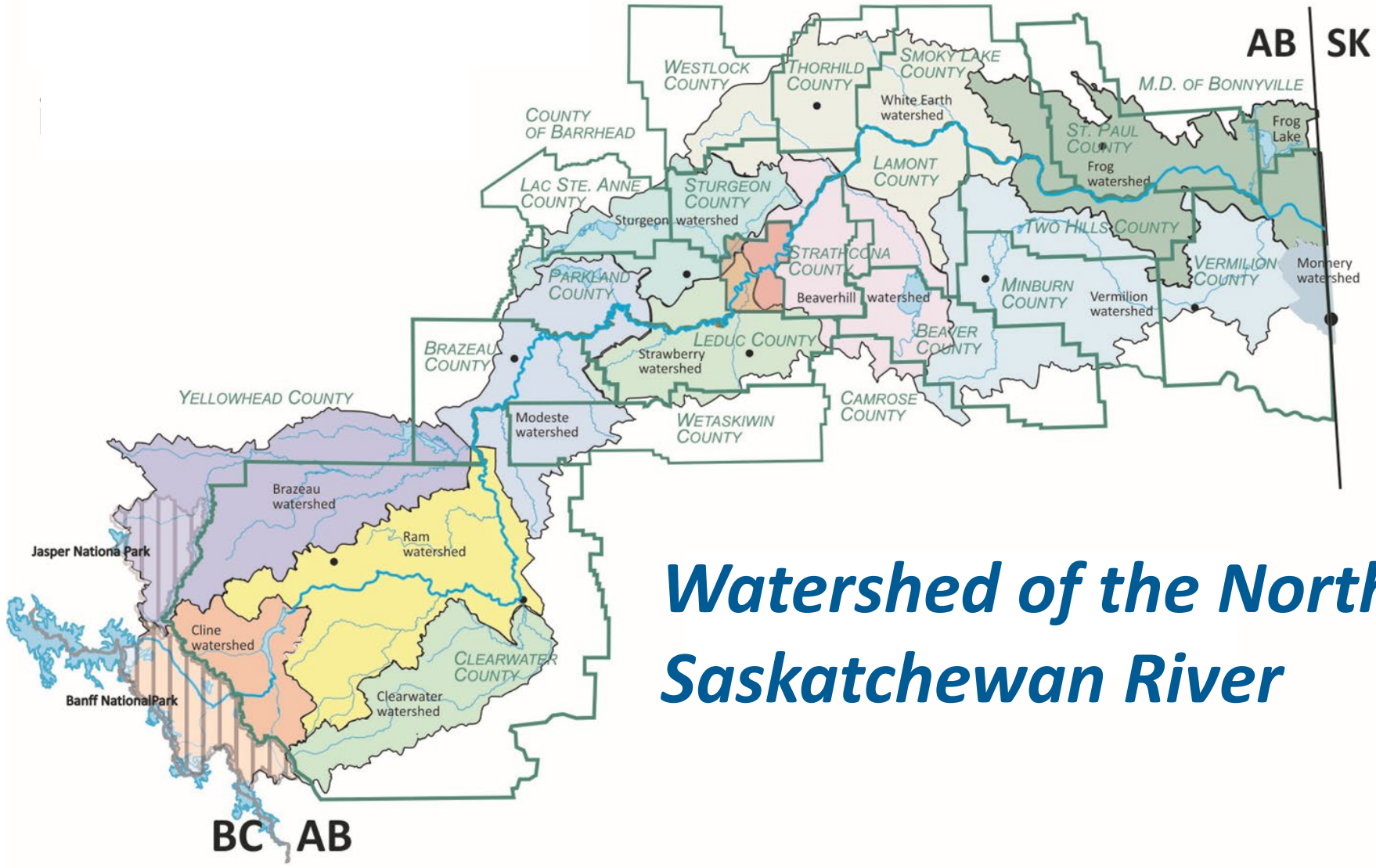
**Working to improve the  
health of our watershed.**

**Collaboration – Planning – Conservation – Education**

# NSWA – The Organization

- Non-Profit, Charitable Organization
- Multi-sector Board of Directors
- Strongly supported by municipalities
- Designated Watershed Planning & Advisory Council (WPAC) – Water for Life Strategy





# *Watershed of the North Saskatchewan River*



# KEY RESPONSIBILITIES

- 1 Collaborative *'Sparkplug'*
- 2 Watershed Assessment and Planning
- 3 Literacy, Education, Outreach
- 4 Tools and Technology



# Improving Watershed Health

Three Sub-watershed Alliances

State of the Watershed

Riparian Health Action Plan

NSRB Wetland Strategy

Natural Asset Management

Regional Lakes Stewardship

Water Management Roadmap

Canadian Heritage River Manager

Urban Creeks Collaborative

WaterSHED Monitoring Program

NSR Documentary Video Series

Digital Watershed Project

Outreach Events





# STATE OF THE WATERSHED

# STATE OF THE WATERSHED

- PURPOSE

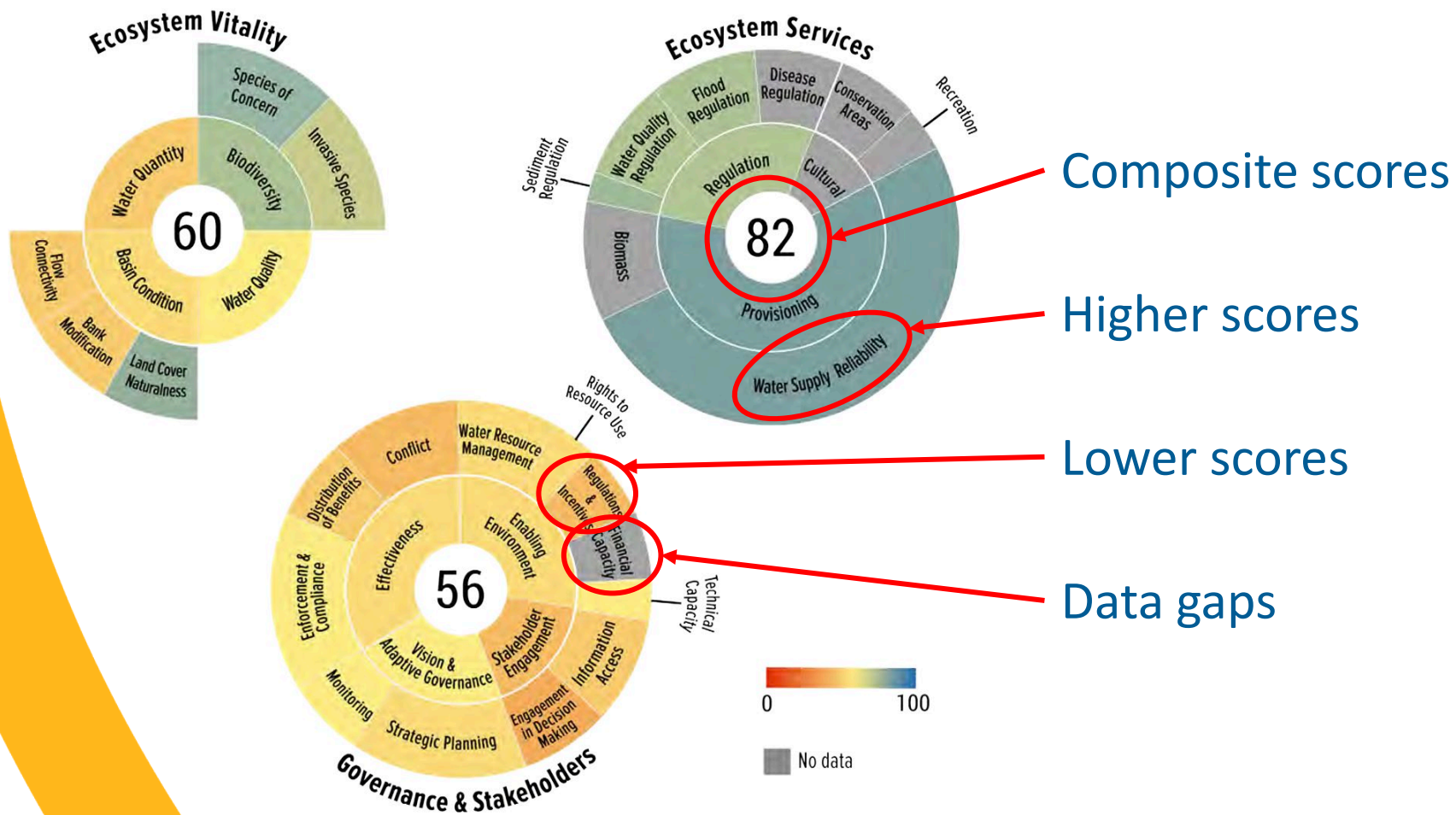
- *Assess aspects of watershed health as a baseline to determine if and what actions are needed to improve watershed health.*

- APPROACH



- ***Freshwater Health Index*** (*Conservation International*) to score *watershed vitality, services, and governance.*
  - Scientifically supported
  - Scalable
  - Consistent and repeatable
  - Stakeholder-driven

# STATE OF THE WATERSHED



Composite scores

Higher scores

Lower scores

Data gaps



**NORTH SASKATCHEWAN WATERSHED ALLIANCE**

[www.nswa.ab.ca](http://www.nswa.ab.ca)

The North Saskatchewan River Watershed Alberta



**ENGAGING WATERSHED RESIDENTS**

# ENGAGING RESIDENTS

- PURPOSE

- *Raising the level of awareness, interest, and understanding of watershed stewardship and science.*

- APPROACH

- *Community events*
- *Workshops and Webinars*
- *Newsletters*
- *Social Media*







# **A WETLAND STRATEGY FOR THE NORTH SASKATCHEWAN WATERSHED**

# WETLAND STRATEGY

*Strategy to Improve Wetland Management in the NSR Watershed*

- **PURPOSE**

- *Set collaborative direction for the watershed to advance wetland management.*

- **APPROACH**

- *Define a regional vision for wetlands.*
- *Define objectives and targets among municipalities.*
- *Develop more consistency between programs.*
- *Build technical capacity and knowledge.*





# WETLAND STRATEGY

*Strategy to Improve Wetland Management in the NSR Watershed*

- Strategy review
  - *Subwatershed Alliances*
  - *Government of Alberta*
  - *Ducks Unlimited*
  - *NSWA Board of Directors*
- Once finalized
  - *Strategy provided to Council*
  - *Presentation?*



The image features a scenic landscape of a lake with a forested shoreline under a bright, cloudy sky. The sun is visible in the upper left, creating a lens flare effect. The water reflects the sky and clouds. A thick yellow curved line is on the left side, and a blue and green bar is at the bottom. The title text is centered in yellow.

# **REGIONAL LAKE STEWARDSHIP PROJECT**

# REGIONAL LAKES STEWARDSHIP

- PURPOSE

- *Coordinate stewardship actions across lakes.*

- APPROACH

- *Take a regional approach to lake issues and concerns.*
- *Coordinated support for lake stewardship groups.*
- *Community of Practice for lake stewards.*
- *Restoration demonstration projects.*





# **RIPARIAN HEALTH ACTION PLAN**

# RIPARIAN HEALTH ACTION PLAN

Partner  
Municipalities



Alberta WPACs



Alberta



Environment and  
Climate Change Canada  
Canada

- **PURPOSE**

- *Scalable assessment of riparian health on which to educate, plan, build policy, and restore priority areas.*

- **APPROACH**

- *Cost-effective assessment using satellite data.*
- *Set targets for riparian health and align land and water planning.*
- *Develop tools for municipal planning and decisions.*
- *Riparian Web Portal to universally share knowledge.*



# RIPARIAN HEALTH ACTION PLAN

## Policy Alignment

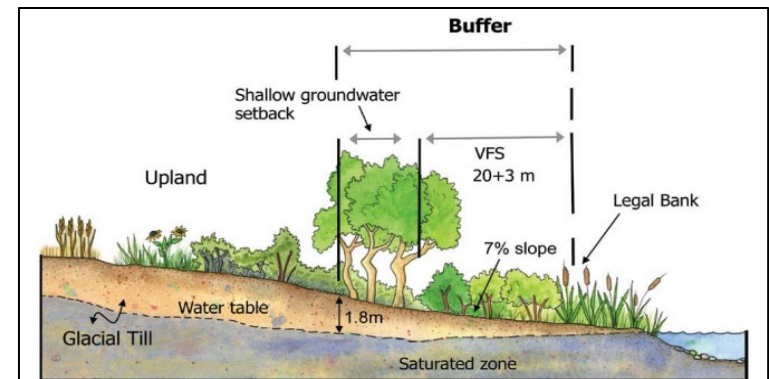
- Over 20 sets of municipal bylaws
- Definitions, consistency
- Suggest language for new bylaws

## Setback Advisor

- High slope areas – potentially unstable
- Low slope areas – potential to inundate

### Current Land Use Bylaw Regulations

PLWMP Objectives	Leduc County	Co. of Wetaskiwin	Argenti a Beach	Crystal Springs
Do the LUBs include a requirement for a development permit for clearing vegetation?	YES	YES, if it affects drainage	YES	DPs include landscaping and surface draining plans
Do the LUBs include a minimum requirement for % of vegetative cover (or landscaping) on a lot?	YES, - in Rural Residential District	YES - in LM, LR, RCY, WP Districts		
Do the LUBs regulate a minimum % of native vegetation in landscaping requirements?	Not as a percentage	YES - in LM, LR, RCY, WP Districts		
Do the LUBs include requirements to include LID tools in SWMPs?	No, County Standards only			
Do the LUBs discourage or restrict the removal of healthy tree stands or shelterbelts?	YES	YES		
Do the LUBs include, as				



Buffer width calculation for Figure 3

Setback	Width (metres)
Vegetated filter strip (glacial till)	20
Slope factor, glacial till $(7 - 5) \times 1.5$	3
Setback to avoid shallow groundwater <sup>13</sup>	10
Total buffer width	33



# **BENEFITS OF PARTNERSHIP**

# BENEFITS OF PARTNERSHIP

## DRIVING COLLABORATION



*We facilitate inter-municipal partnerships that address watershed issues*

## GRANT SUPPORT



*NSWA has coordinated over \$3 million in grant funds for municipalities*

## EXPERTISE & PROJECT MANAGEMENT



*NSWA staff have knowledge of municipal watershed issues*

## EDUCATION & AWARENESS



*We provide resources to help residents and council understand watershed issues*



Stay Connected!



[www.nswa.ab.ca](http://www.nswa.ab.ca)



north\_sask\_river



NorthSaskRiver



@NorthSaskRiver



northsaskriver



**NSWA**

NORTH SASKATCHEWAN  
WATERSHED ALLIANCE