



**parkland**  
county

# Whitewood Conceptual Scheme & Land Use Bylaw Amendment Bylaw 2018-02

Planning and Development Services  
March 28, 2017

# Context



The Former Whitewood Mine Site is located 65km west of Edmonton and directly north of the Yellowhead Highway.

TransAlta Corporation have submitted two planning applications for council consideration:

- 1) Whitewood Conceptual Scheme for Council Adoption; and
- 2) Redistricting to Land Use Bylaw 18-2018 from RE to the PC, ANC and AGG Land Use Districts ~1,634 hectares

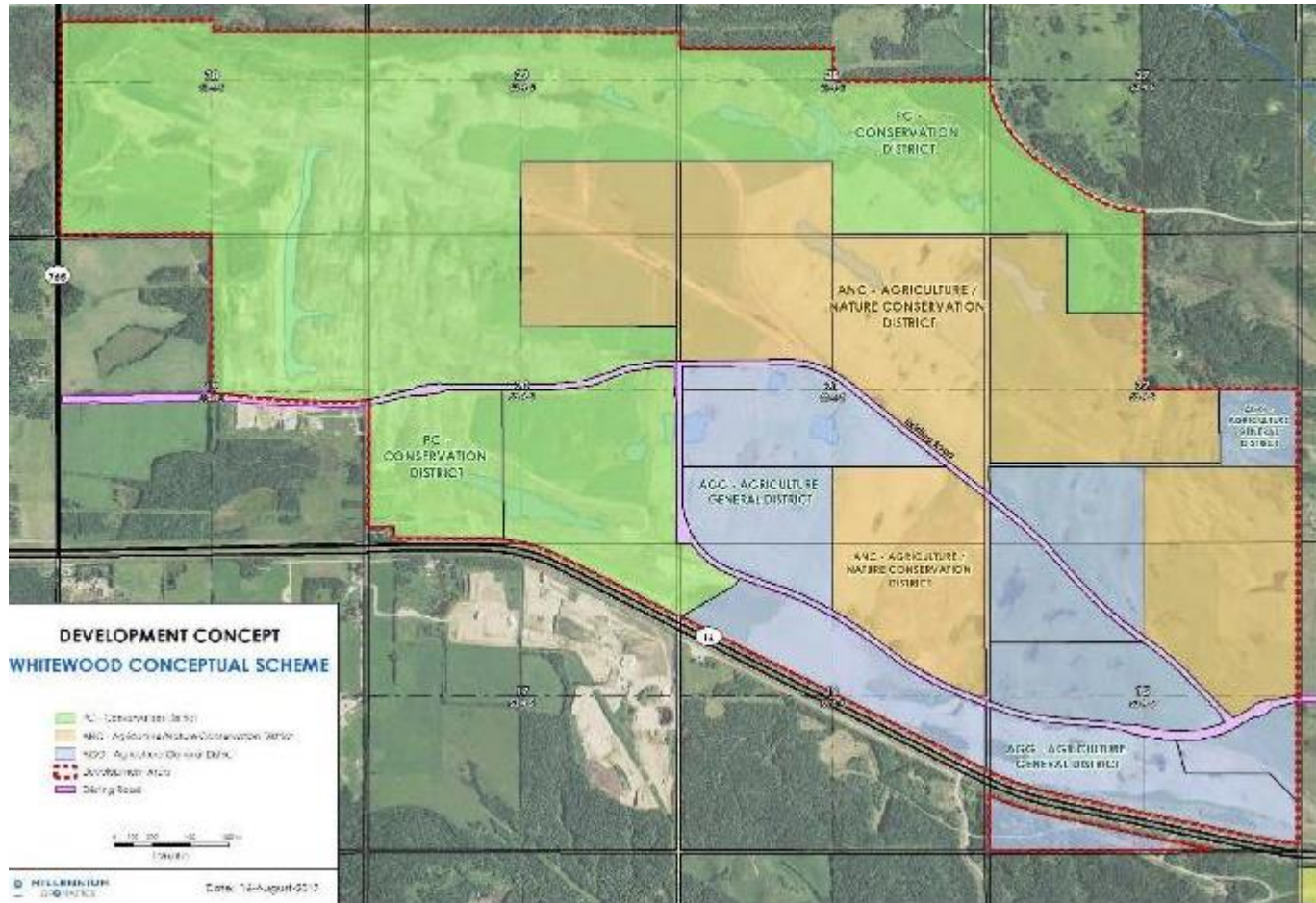
# Whitewood Conceptual Scheme

...

## For Council Adoption



# Development Concept



Land Use	Area (ha +/-)
Recreation	780
Agricultural	880
Total	1660

**Redistricting of  
Portions of  
Township 54, Range 3, W5M  
From RE to PC, ANC, AGG  
...**

**Bylaw 2018-02**





# Redistricting Application

Location:

Intersection of Rg Rd 74 and Twp. Rd 534

Legal Description:

Township 54, Range 3, W5M

Area:

1634 ha (4,037 ac)

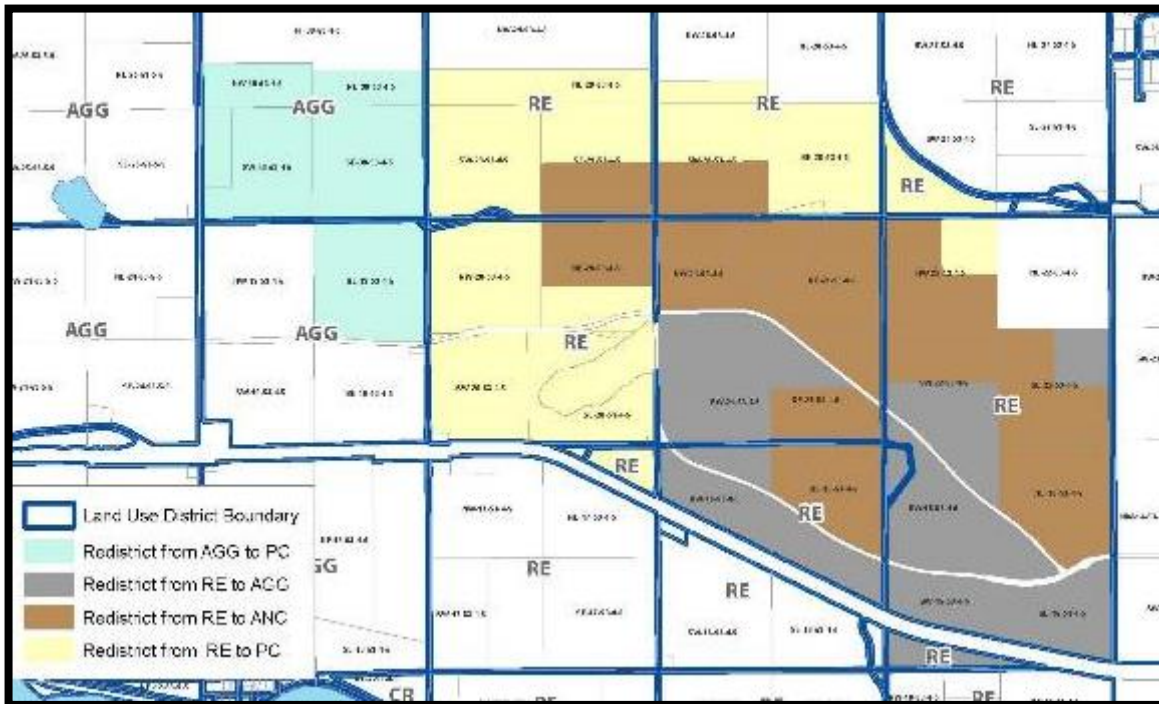
Proposal:

FROM: RE – Resource Extraction District

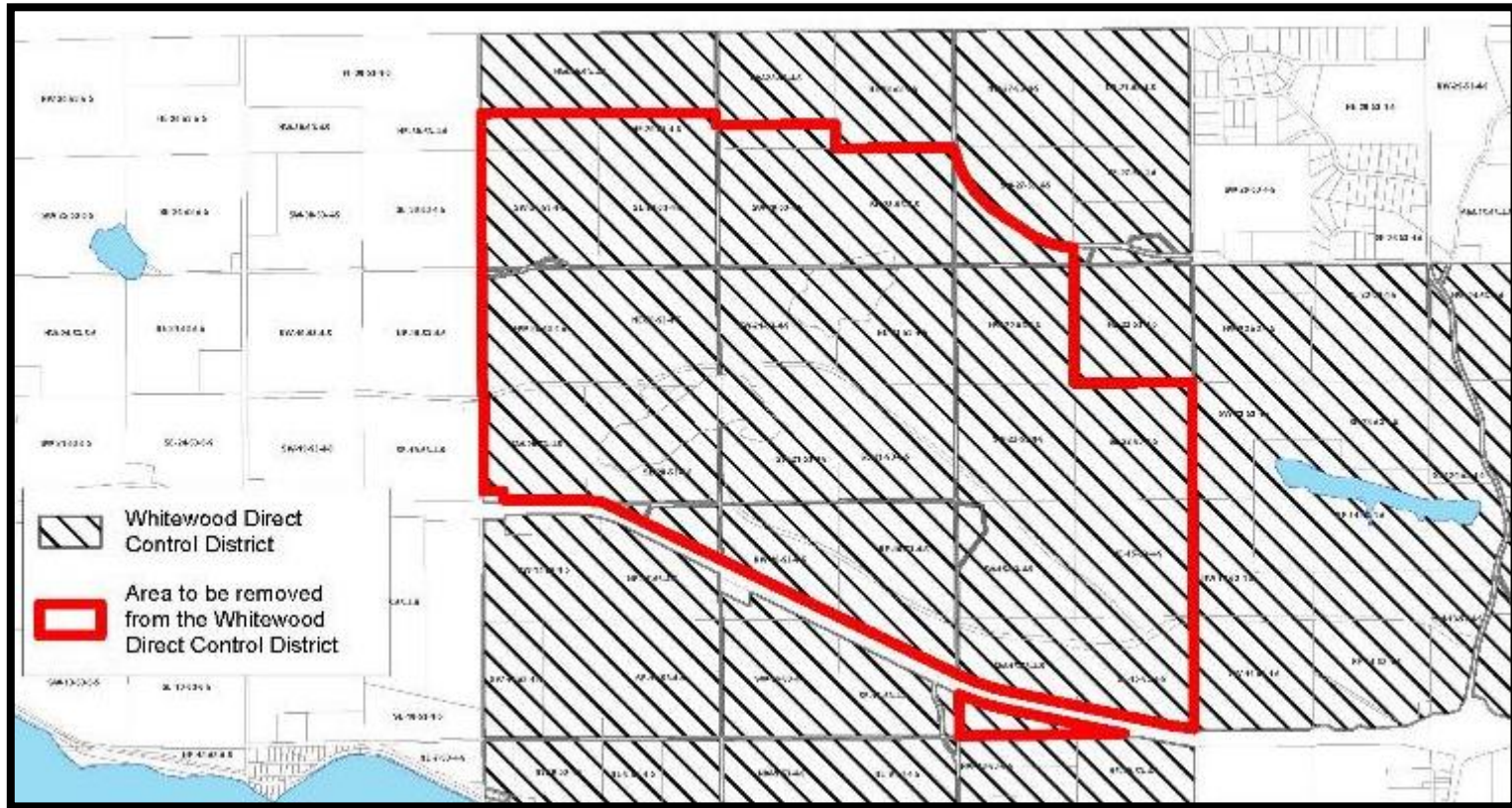
TO: PC-Conservation District, ANC – Agriculture Nature/ Conservation District, and

AGG-Agriculture General District – AND-

AGG-Agriculture General to PC-Conservation District



# Removal from Direct Control



# Public Comments

- General Support for the project.
- Support for agricultural uses only.





# Recommendations

Administration recommends council support for the Whitewood Conceptual Scheme and Bylaw 2018-02 based on the following rationale:

- The applications are consistent with the County's Municipal Development policies.
- No conflicts with the Environmental Conservation Master Plan.
- The Conceptual Scheme provides guidance to land use and future subdivision and development.



# Registered Speakers

