

February 1, 2022

Our File No.: 22-0086

Your File No.: PD-2021-008

**Parkland County
Planning and Development Department**

SENT: via email

Attention: Julia Buffam

RE: Proposed Redistricting Bylaw 2021-27 – CRE-Country Residential Estate District, Springbank Park Estates within SW 16-53-26-W4

The Engineering Department of ATCO Transmission, (a division of ATCO Gas and Pipelines Ltd.) has reviewed the above named plan and has no objections subject to the following conditions:

1. Any existing land rights shall be carried forward in kind and registered on any newly created lots, public utility lots, or other properties.
2. ATCO Transmission requires a separate utility lot for its sole use.
3. Ground disturbances and surface works within 30 meters require prior written approval from ATCO Transmission before commencing any work.
 - Municipal circulation file number must be referenced; proposed works must be compliant with ATCO Transmission requirements as set forth in the company's conditional approval letter.
 - Contact ATCO Transmission Land Department at 1-888-420-3464 or landadmin@atco.com for more information.
4. Road crossings are subject to Engineering review and approval.
 - Road crossing(s) must be paved and cross at a perpendicular angle.
 - Parallel roads are not permitted within ATCO Transmission right(s)-of-way.
 - **Road crossing(s) will require a pipeline alteration, the cost will be borne by the developer/owner and can take up to 18 months to complete.**
5. Parking and/or storage is not permitted on ATCO Transmission facility(s) and/or right(s)-of-way.
6. Encroachments are not permitted on ATCO Transmission facility(s) and/or right(s)-of-way.
7. ATCO Transmission recommends a minimum 15 meter setback from the centerline of the pipeline(s) to any buildings.
8. Any changes to grading that alter drainage affecting ATCO Transmission right-of-way or facilities must be adequate to allow for ongoing access and maintenance activities.
 - If alterations are required, the cost will be borne by the developer/owner.

9. Any revisions or amendments to the proposed plans(s) must be re-circulated to ATCO Transmission for further review.

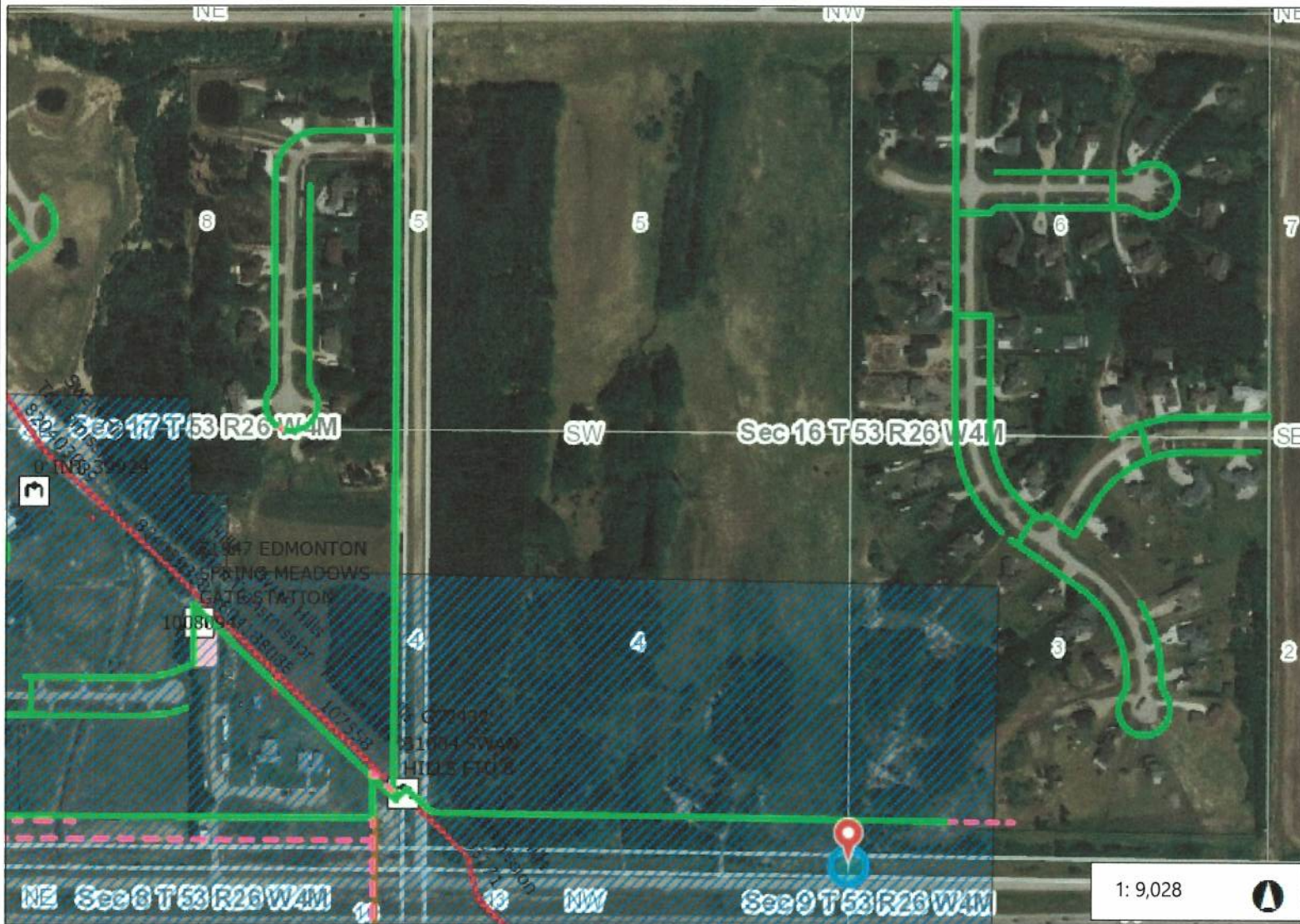
If you have any questions or concerns, please contact the undersigned at hp.circulations@atco.com.

Sincerely,
ATCO Transmission, a division of ATCO Gas and Pipelines Ltd.



Isabel Solis-Jarek
Sr. Administrative Coordinator, Operations Engineering

APPROVED:
AS TO FORM
IS _____
AS TO CONTENT
IS _____
AP



Legend

- Transmission Test Point
- Transmission Pipes**
 - Abandoned
 - Decommissioned
 - Operating
 - Proposed
- Gas Pipe Casing**
 - Aluminum
 - Steel
 - Cast Iron
 - Plastic
- Transmission Capital Project MOP Range
- Transmission Station
 - ATS Section with Road Allowa Hydro
 - ATS Quarter Section with Road Below Hydro
 - ATS Legal SubDivision with R Label Below Hydro
- ATS Township Index Outline 8
- ATS Section with Road Allowa Outline
- ATS Quarter Section with Road Outline
- ATS Legal SubDivision with R Label Outline

Notes

458.6 0 229.31 458.6 Meters

WGS_1984_Web_Mercator_Auxiliary_Sphere
© Latitude Geographics Group Ltd.

This map is a user generated static output from an Internet mapping site and is for reference only. Data layers that appear on this map may or may not be accurate, current, or otherwise reliable.

THIS MAP IS NOT TO BE USED FOR NAVIGATION

1: 9,028

