

Parkland County
Environmental Advisory
Committee Update
July 2015



Presentation Summary

Terms of Reference for EAC

Priority Areas for 2015

“ One Size Does Not Fit All ”

How EAC Assists Council

ROLES

1. to advise on the development and implementation of County-wide plans, programs, policies, initiatives related to environment;
2. to identify and advise on emergent environmental concerns and potential solutions as they arise;
3. to generate public awareness regarding environmentally friendly practices, stewardship options, and other initiatives;
4. to prioritize short-term, intermediate and long-term environmental and sustainability initiatives; and
5. to advise on the *Annual State of the Environment Report*.

RESPONSIBILITIES

1. on an annual basis review the *Terms of Reference* for the committee, and identify goals and priorities for the following year;
2. make a presentation to Council regarding the work undertaken and the accomplishments of the committee;
3. align committee actions with Council's vision and assist in the execution of Council's goals as identified in the *Strategic Plan*;

RESPONSIBILITIES, cont'd

4. give due consideration to social and economic aspects within an environmental context;
5. cooperate with, but avoid duplicating the activities of other committees or organizations.



Presentation Summary

Terms of Reference for EAC

Priority Areas for 2015

“One Size Does Not Fit All”

How EAC Assists Council

1. proclamation of “2015 Year of the Lake”;
2. listing / evaluation of the current status, goals and objectives of community stewardship groups;
3. assist in launching Green Acreages Program;
4. host joint meeting with Parkland County Advisory Committees to discuss common issues: RVA, Gravel Advisory Committee, ALUS, etc.;

5. provide input into the *State of the Environment Report* update;
6. develop a plan to inform Parkland County residents on objectives and initiatives of the EAC; and
7. determine research areas/topic areas for potential post-secondary study areas that will advance Parkland County environmental initiatives.



Presentation Summary

Terms of Reference for EAC

Priority Areas for 2015

“ One Size Does Not Fit All ”

How EAC Assists Council

One Size Does Not Fit All



Evolution of Human Value
Systems: Contemporary Trends

Consultation Strategies &
Engagement

Municipal Standards

Environmental Protection

Partnerships & Stewardship



Key Message:

our values for natural area
protection have changed

Evolution of Human Value
Systems: Contemporary Trends

Consultation Strategies &
Engagement

Municipal Standards

Environmental Protection

Partnerships & Stewardship



JB Jackson's *Westward Moving House*, 1953

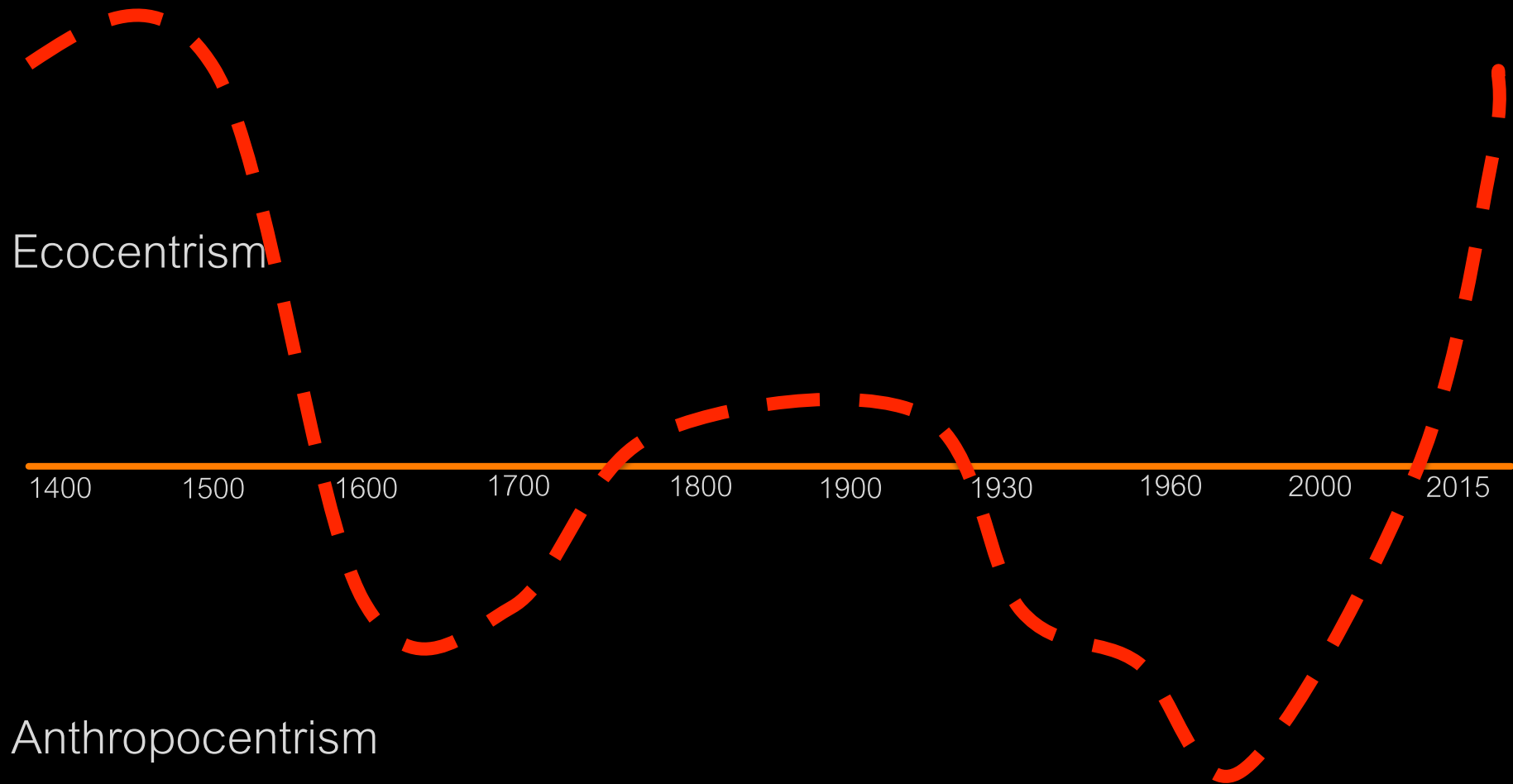
Metaphorical analysis of human / nature relationship

- time – European immigration to industrialization: three generations
- location – move from dense east coast city to expansive new frontier
- dependence – rise of technology, lessened dependence on nature
- family values – interdependence to independence
- control – dominance over nature

Human Values:

anthropocentric value – view that biodiversity has value only as a means to human ends (human centered)

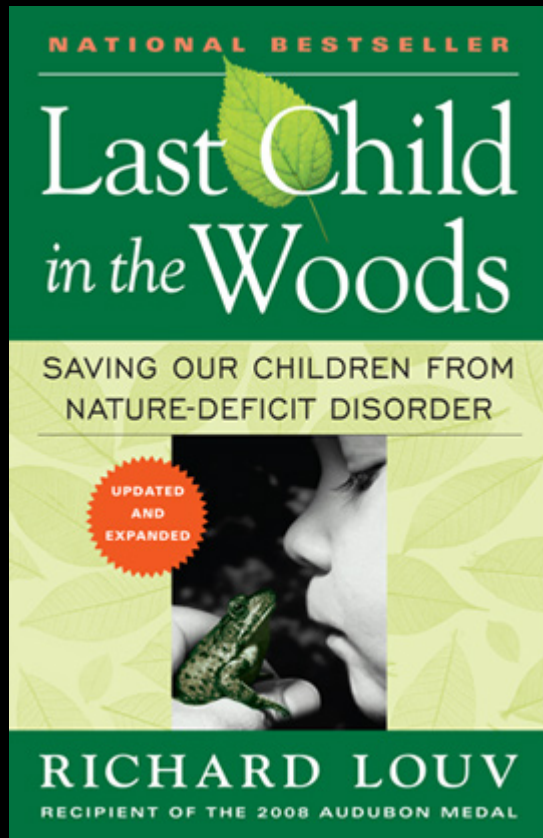
biocentric / ecocentric value – view that biodiversity is valuable, with humans just one species in the system



Ecocentrism

Anthropocentrism

1400 1500 1600 1700 1800 1900 1930 1960 2000 2015



www.richardlouv.com

What is Nature Deficit Disorder?
“A belief that a lack of routine contact with nature may result in stunted academic and developmental growth . . . an unwanted side-effect of the electronic age . . . ”

Explains how our societal disconnect with nature is affecting today's children



www.aromatherapy4u.com

Claimed Symptoms of NDD

- attention problems
- obesity
- anxiety, depression

Claimed risks of NDD

- above-noted conditions
- sedentary lifestyle
- life-long habit development of reliance on technology for entertainment
- lack of connection with nature



Key Message:

conventional open house
sessions are not effective

Evolution of Human Value
Systems: Contemporary Trends

Consultation Strategies &
Engagement

Municipal Standards

Environmental Protection

Partnerships & Stewardship



Key Message:

environmental areas in
Parkland County are too
diverse for “one standard”

Evolution of Human Value
Systems: Contemporary Trends

Consultation Strategies &
Engagement

Municipal Policies & Standards

Environmental Protection

Partnerships & Stewardship

MDP /
CSDP

Influence

County-wide
plans, policies, and strategies



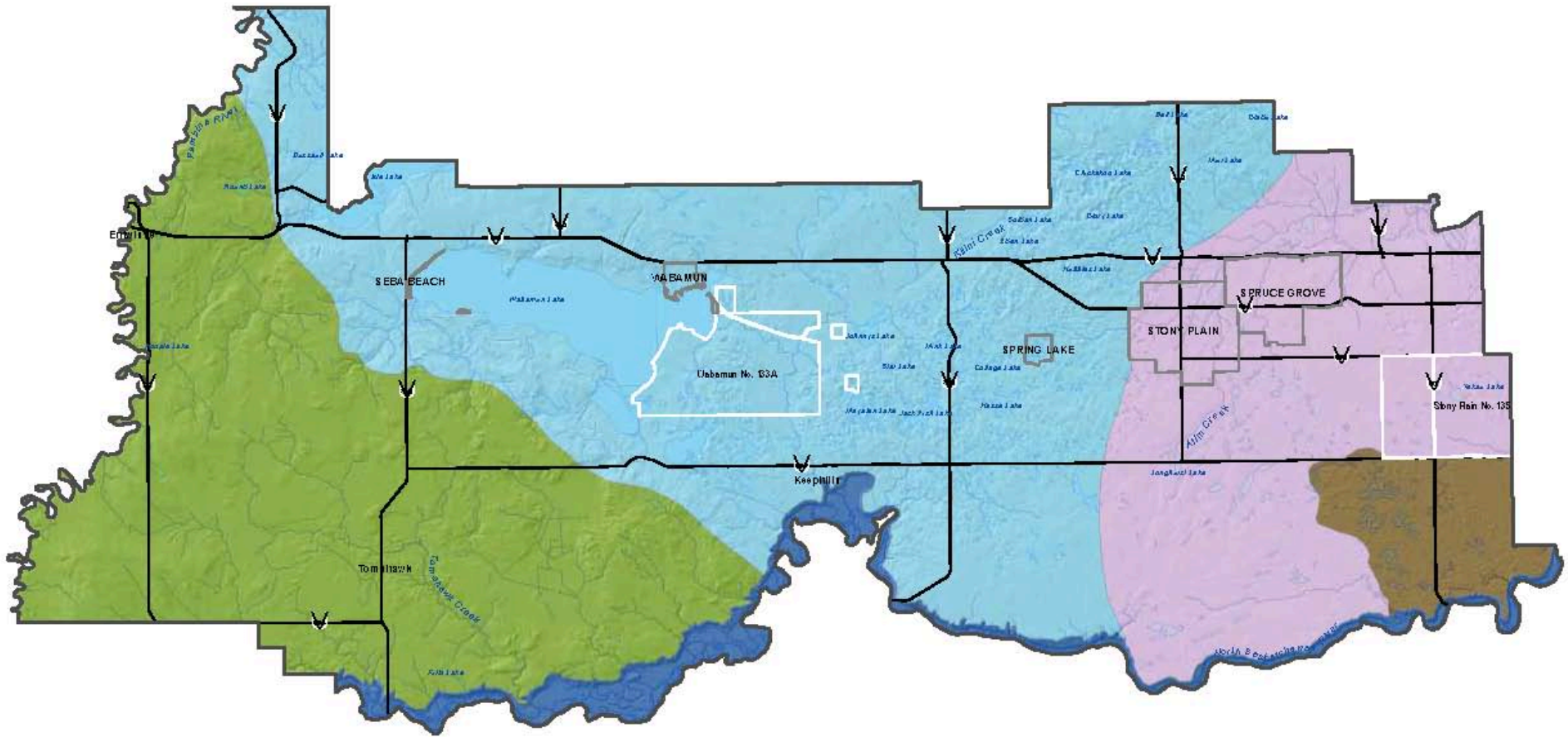
area-wide
secondary plans and urban
design visions



site-specific
site plans and development
concepts







- | | |
|-----------------------------------------------------------------------------------------------------------|---------------------------------------------------------------------------------------------------------------------|
|  County Boundary | Landscape Unit |
|  Municipal Boundary |  Central Lakes / Dry Mixedwood |
|  First Nations Reserve |  Devon Dunes |
|  Highway |  Edmonton Plain Central Parkland |
| |  North Saskatchewan River Valley |
| |  Tomahawk Uplands Mixedwood |

FACILITATED DEVELOPMENT PROCESS

1. identify key wildlife corridors and patches, and protect them;
2. have a robust set of policies and standards that are clear and intentional – be development friendly;
3. recognize diversity of ecosystems in Parkland County – one size does not fit all;
4. incentives to developers and landowners for environmental area dedication, easements, gifting; and
5. use industry to its fullest potential: experts in their field
6. create a culture of environmental value amongst administration



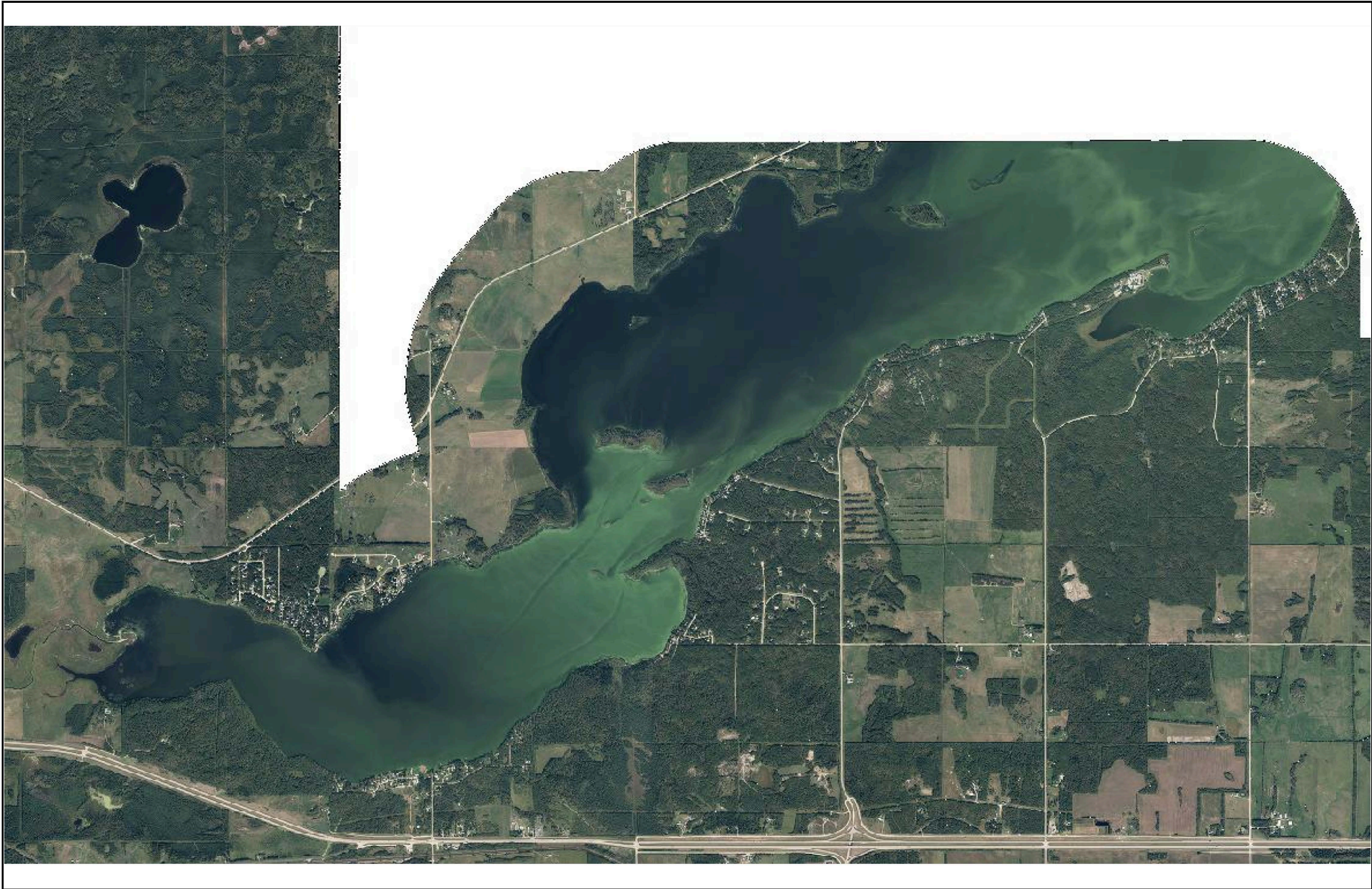
Property Cost Comparison: Winnipeg, MB

Development	On Pond	Assessed Value (\$)	House Area (ft ²)	Property Taxes (\$)	Selling Price (\$)	Price per Square Foot (\$)
Royalwood	Y	611,000	1849	7337	779,900	421
Royalwood	N	342,000	1264	4207	369,000	291
Sage Creek	Y	592,000	1816	6500	769,900	423
Sage Creek	N	349,000	1737	4437	399,900	230
Bridgwater	Y	853,000	2353	9614	959,000	407
Bridgwater	N	631,000	2306	7348	749,900	325

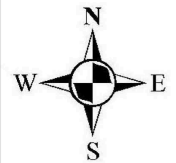


Property Cost Comparison: Strathcona County, AB

Development	On Pond	Assessed Value (\$)	House Area (ft2)	Property Taxes (\$)	Selling Price (\$)	Price per Square Foot (\$)
Summerwood	Y	880,000	2850	6330	896,000	314
Summerwood	N	515,000	2140	5438	537,000	251
Foxboro	Y	772,000	2775	6100	775,000	279
Foxboro	N	488,000	2520	4870	504,000	200
Heritage Hills	Y	1,176,000	3060	6845	1,198,000	392
Heritage Hills	N	648,000	2450	5730	677,000	276



Parkland County Lake Isle



Disclaimer:
Parkland County offers this information in good faith, but makes no warranty with regard to the correctness, and accuracy of the data.

Created by

Date

Fri Jun 26, 2015 3:20PM

Department

Scale

1:34680 Metres



Key Message:

need to consider more
than just the visible
landscape

Evolution of Human Value
Systems: Contemporary Trends

Consultation Strategies &
Engagement

Municipal Policies & Standards

Environmental Protection

Partnerships & Stewardship



Key Message:

we can't do it alone: need
for partnerships

Evolution of Human Value
Systems: Contemporary Trends

Consultation Strategies &
Engagement

Municipal Policies & Standards

Environmental Protection

Partnerships & Stewardship



Presentation Summary

Terms of Reference for EAC

Priority Areas for 2015

“One Size Does Not Fit All”

How EAC Assists Council

EAC's Advisory Role to Council:

- recommendation of applicable plans, policies and management practices as identified in the Environmental Conservation Master Plan and Community Sustainability Development Plan;
- recommendations on public and stakeholder engagement;
- influence partnerships between the County and other organizations; and
- assist Council in achieving the key results and actions of the environmental priorities of the PC's *Strategic Plan*.