

Presentation to Parkland County Council

February 3, 2026



Vision:

The Spruce Grove and District Agricultural Society shapes the future of our community by providing events and educational opportunities, offering a popular landmark, and preserving the past thereby connecting with our agricultural and historical roots.

Mission:

The Spruce Grove and District Agricultural Society provides opportunities to bring people together to explore agriculture's influence on the past, present, and future of our community.

2024 Bylaws – Objectives

- (A) elevate both **rural and urban agriculture, horticulture, homesteading, and micro-farming** while improving the overall quality of life in our community;
- (B) collect, document, and safeguard the **agricultural history and traditions** of our community for future generations;
- (C) create **engaging programs and activities** to educate and inspire our community about our agricultural roots;
- (D) to promote **awareness and celebration** of agricultural and horticultural practices;

2024 Bylaws – Objectives

(E) offer **programs to cultivate leadership skills among the youth** in our community, empowering them to take active roles in local initiatives.

(F) **attract visitors and promote tourism** by showcasing cultural, educational, and interpretive insights into agricultural practices and our history;

(G) manage, maintain, lease, mortgage, sell, dispose of or otherwise deal with the property of the Society within the limits of the Act.



Partnerships

- City of Spruce Grove
- Skydancer Indigenous Cultural Society
 - Spruce Grove Public Library
 - Wild Rose Shows Inc.
- Parkland Bingo Association
- Horizon Players Association

2025 Annual Report



2025 Annual Report

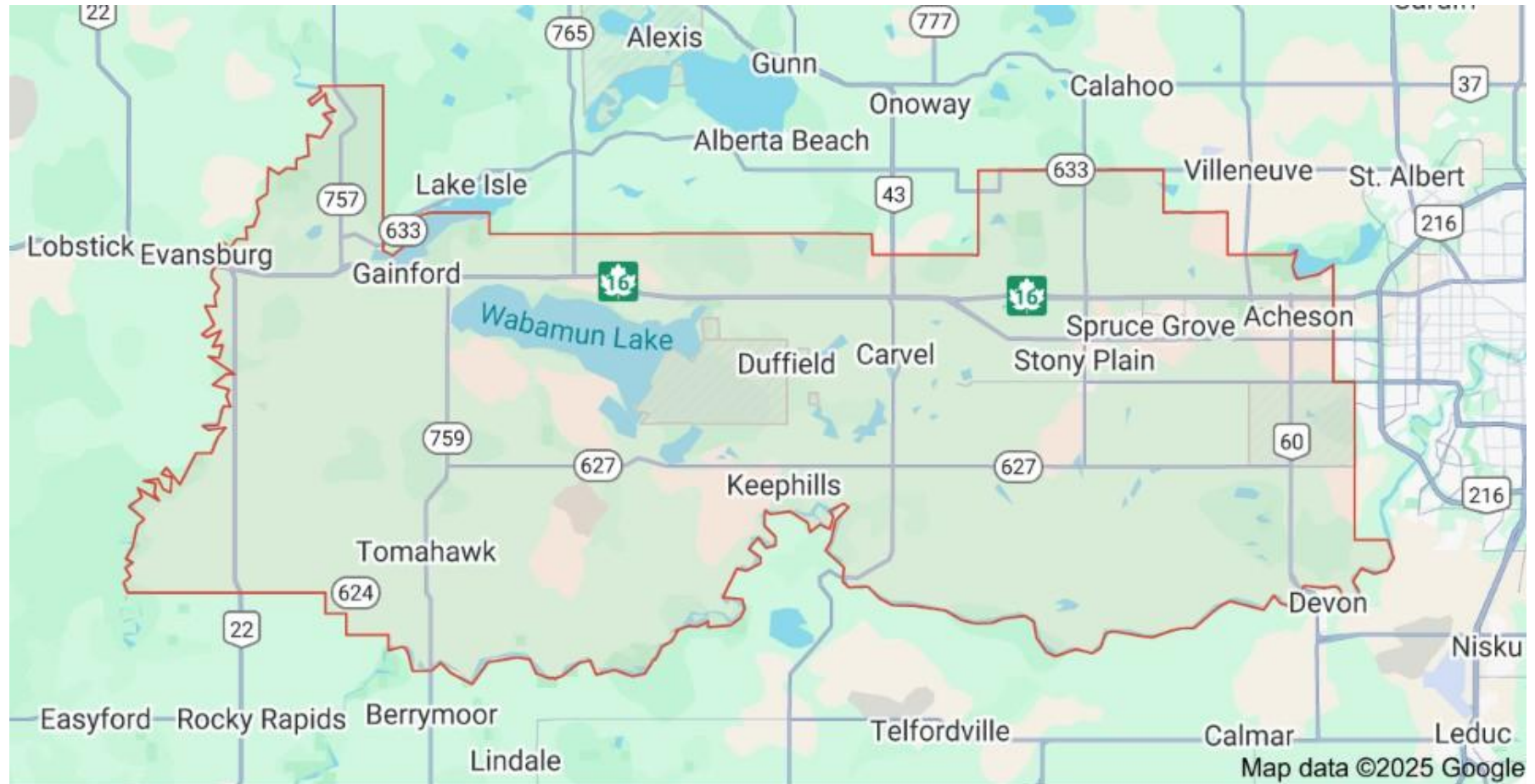
Spruce Grove and District Agricultural Society
Box 3012, Spruce Grove, Alberta, T7X 3A4
www.sprucegrovesociety.com
PH: 780-960-4600

Contents

About Us.....	
History.....	
2025 Board of Directors & Staff	
President's Report.....	
Bylaws:	
Strategic Plan:.....	
Financial Report.....	
2025 Highlights.....	
Committee Restructuring	
AGLC	
Bingo:	
Casino:.....	
Preservation.....	
Archives:.....	
Museum:.....	
Communications and Marketing:.....	
Community Garden:.....	
Events:.....	
Small Events	
Scott Woods Concerts:.....	
School Field Trips:.....	
Spring Carnival:.....	
Large Events.....	
Agra Fair:.....	
Winter Blooms Gala:	
Murder at the Elevator	
Scholarships:.....	
Governance:.....	
Human Resource Management.....	
Spruce Grove and District Agricultural Society - Annual Report	

Hiring:.....	28
Nominating:.....	28
Site Management.....	29
Site/Repair & Maintenance:.....	29
Site Management Plan.....	30
Provincial Heritage Designation.....	30
Project Management.....	30
Our Community Partners.....	32

Parkland County



AGLC: Bingo / Casino

Agra Fair

Preservation: Archives/ Travelling Museum

Communications & Marketing

Community Garden: King Street

Governance

Friends of the Elevator

Financial Stability:

- Grants
- Sponsorship
- Fundraising
- Scholarships

Human Resource Management:

- Nominating/Hiring

Site Management:

- Repair & Maintenance
- Historical Designation
- Site Master Plan
- Project Management

Events:

• **Small Events:**

- Concerts
- School Field Trips
- Education Sessions
- Open Houses

• **Large Events:**

- Agra Fair
- Murder at the Elevator
- Spring Carnival
- Winter Blooms Gala

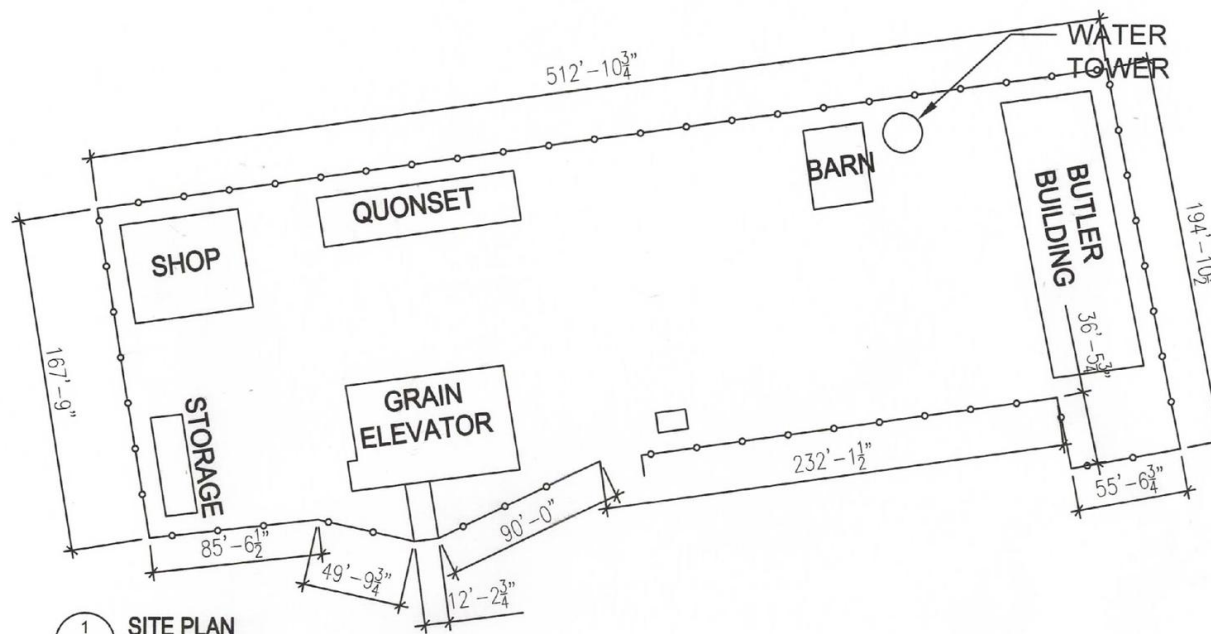
A green-tinted photograph of a rural scene. In the center, a large water tower stands with a detailed illustration of a house and trees on its tank. In the foreground, a modern tractor with a snowplow attachment is parked. To the left, a small wooden building and a vintage truck are visible. The sky is cloudy.

2026 GOALS



DEDICATED
BOARD
WORK ON

FUTURE
PLANNING



1 SITE PLAN
SCALE: $1/64"=1'-0"$



2 GOOGLE IMAGE
SCALE: NTS

CONTINUED WORK ON SITE PLAN



COMPLETING MACHINERY ROW



INDIGENOUS GARDEN

Events, Education, and Rental Opportunities



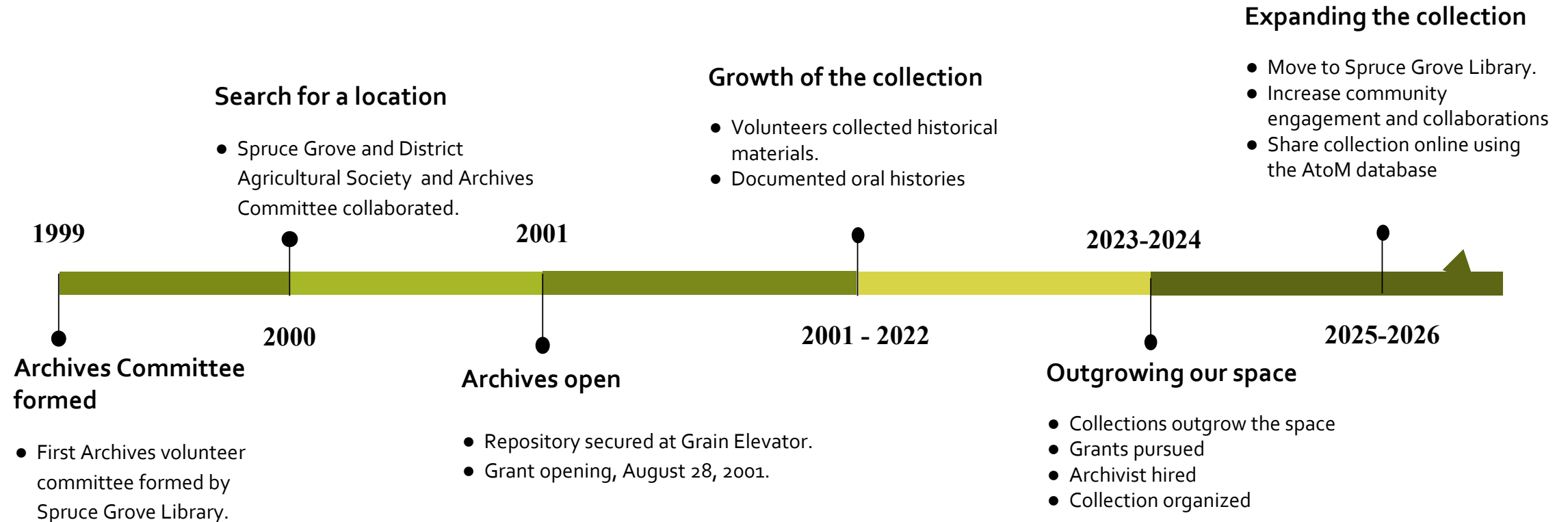


Serving our District and Community

- Acquire, preserve and provide access to historical documents in the Spruce Grove and District
- Preserve and share social, cultural and municipal records of enduring value
- Organize collections to Canadian Archival Standards for long-term preservation

Our goal is to make local and shared history accessible through a Tri-Municipal Archives model.

Inside the Spruce Grove Archives



What's kept in Archives?



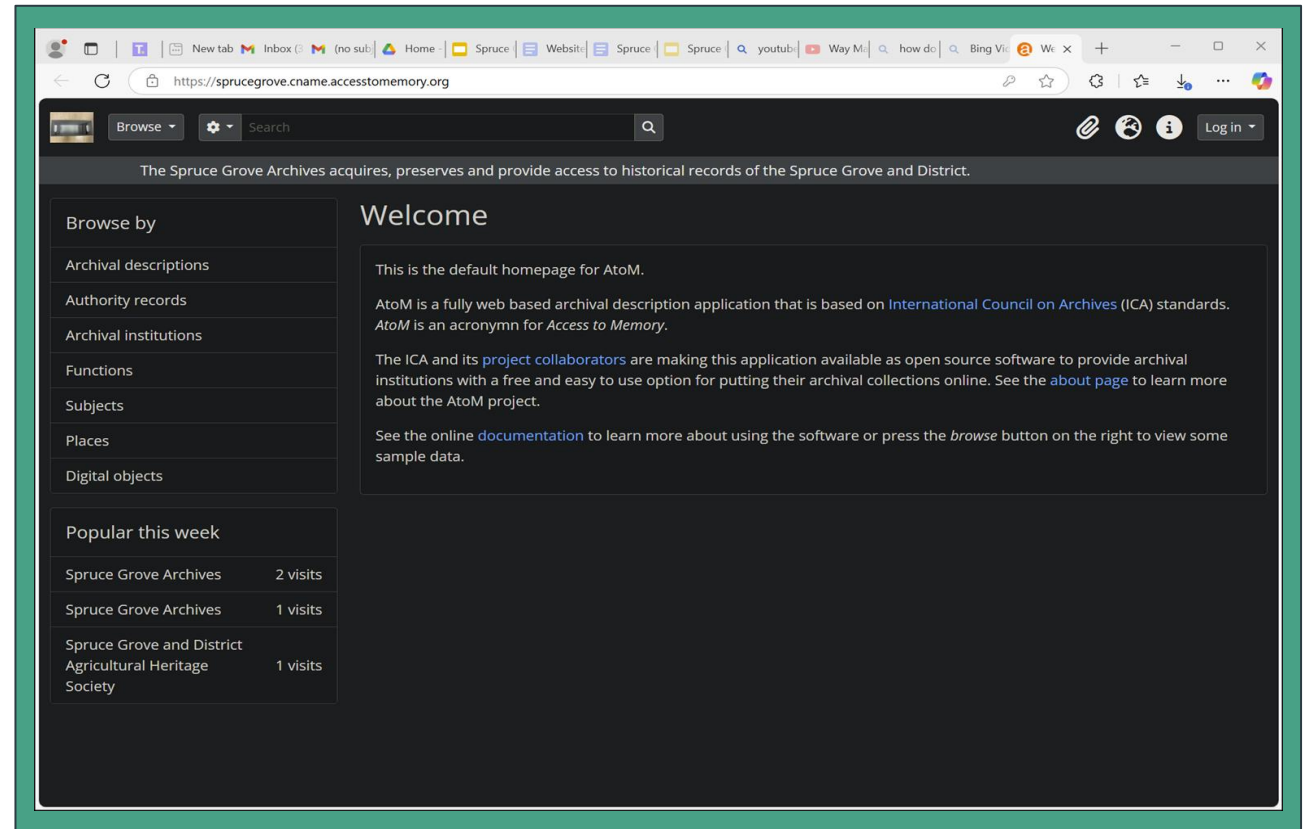
Records of historical value

Textual records
Audio-visual records
Maps, drawings, and paintings
Photographs
History books
Oral histories
Diorama
Newspaper collection
Digital and electronic records

AtoM database

- Web-based archival description software application
- Multi-repository
- Improved access to archival materials
- Enhanced collaboration and sharing—linked to Alberta On Record, the archival provincial database

<https://sprucegrove.cname.accesstomemory.org>



Archives Engagement and Collaborations

We are connected by history, community and people

Spruce Grove

- Workshops
- Exhibits
- Social media
- Community Collaborations

County of Parkland

Community collaborations

- Clymont
- Garden Valley
- Wabamun Museum
- Agriculture Environment Services -
Producer Dinner, Horticulture
department
- Lakemere 4-H Beef Club
- St. John's Lutheran Church
- Stony Plain and Parkland Pioneer
Museum

Oral Histories
Social media

Stony Plain

Workshops

- Stony Plain Library
- Three Robins Seniors

Community Collaborations

- Stony Plain and Parkland
Pioneer Museum
- Westview Health Foundation

Social Media



VOLUNTEER OPPORTUNITIES

No Cow? No Problem!

You don't have to own a cow to be part of the fun!



Growing Community
Sowing Memories

Google us!