



NSWA
NORTH SASKATCHEWAN
WATERSHED ALLIANCE



parkland
county

Council Presentation

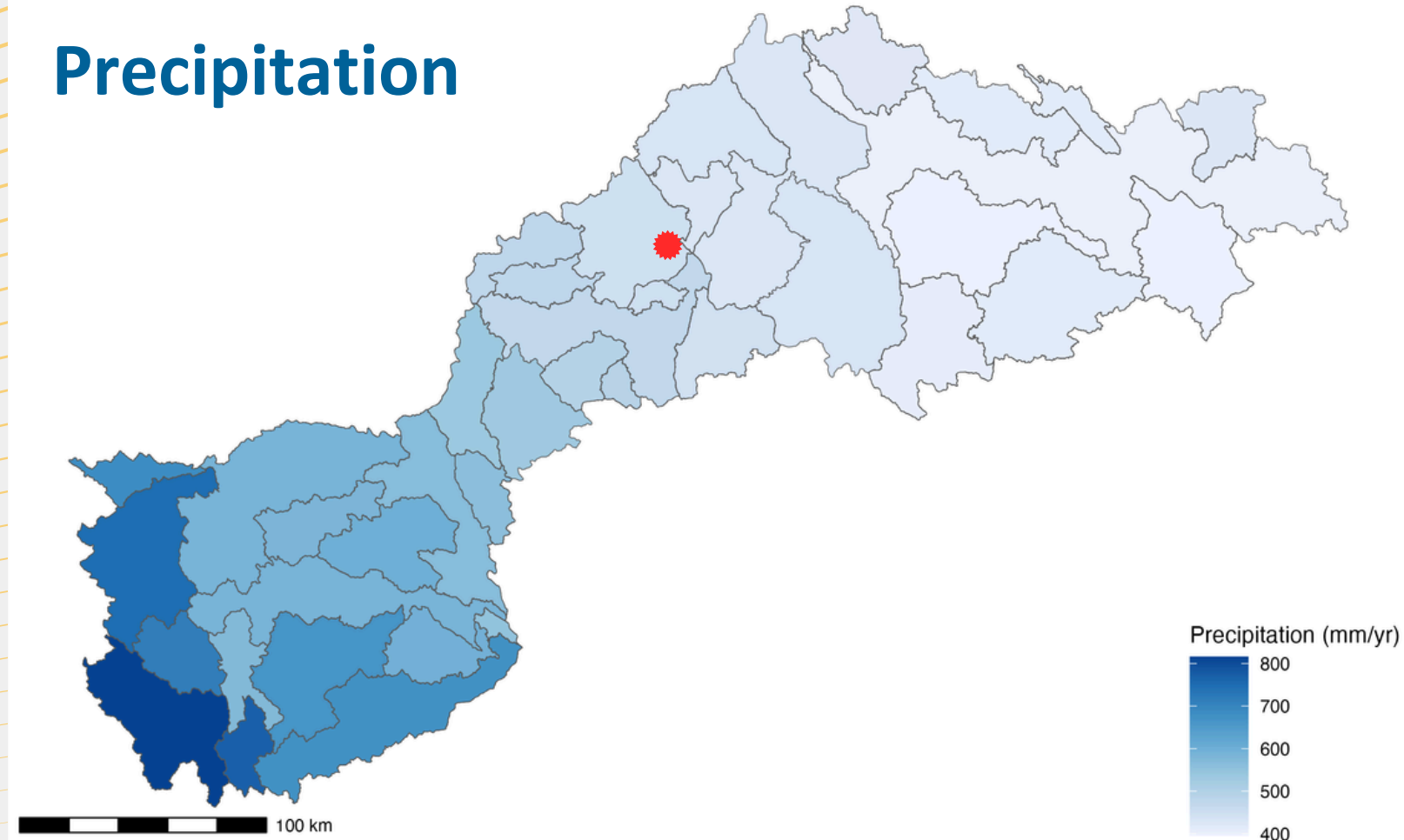
3 February 2026

Dedicated to the conservation,
protection, and sustainable
management of the North
Saskatchewan River watershed.

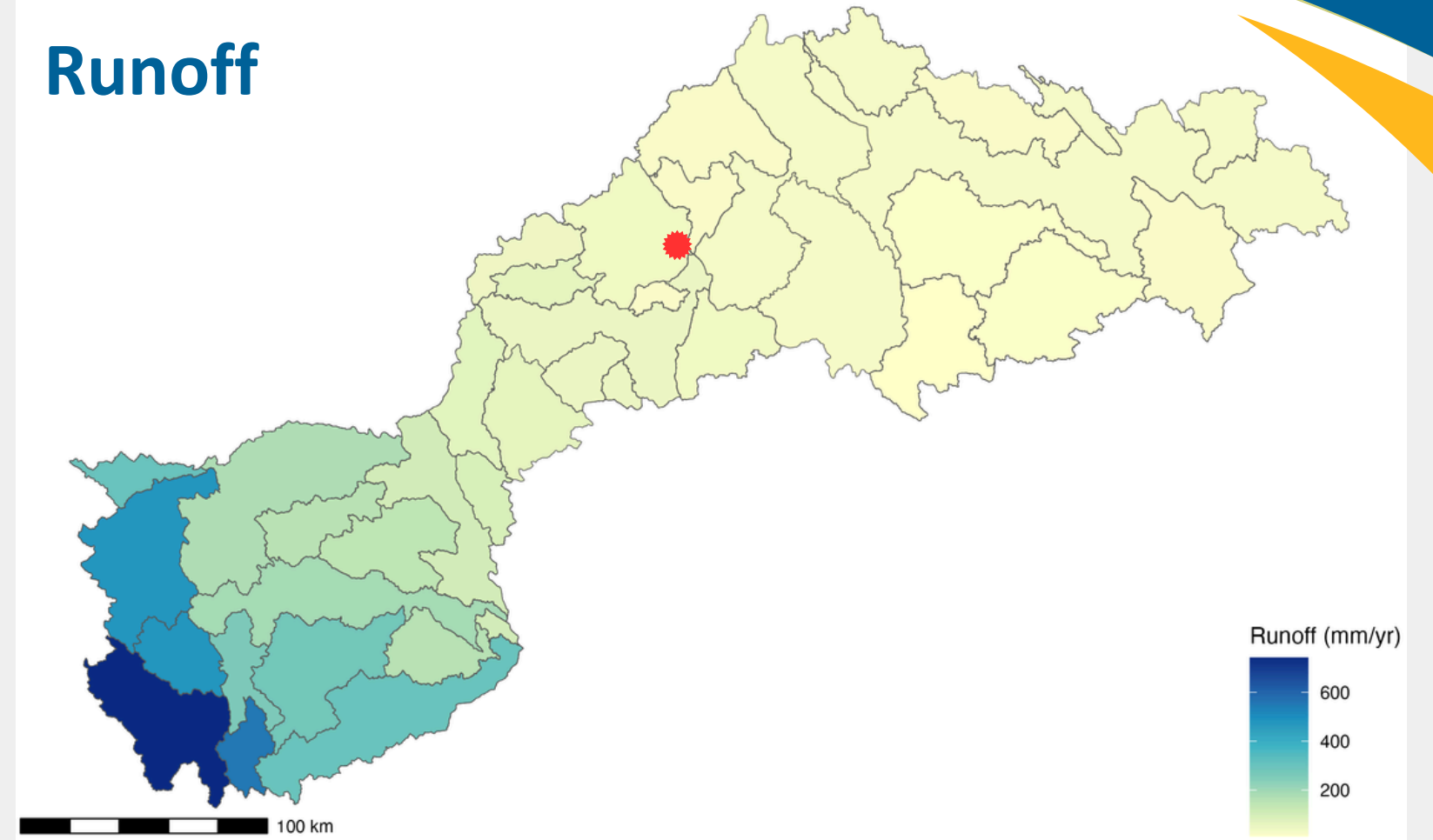
North Saskatchewan River



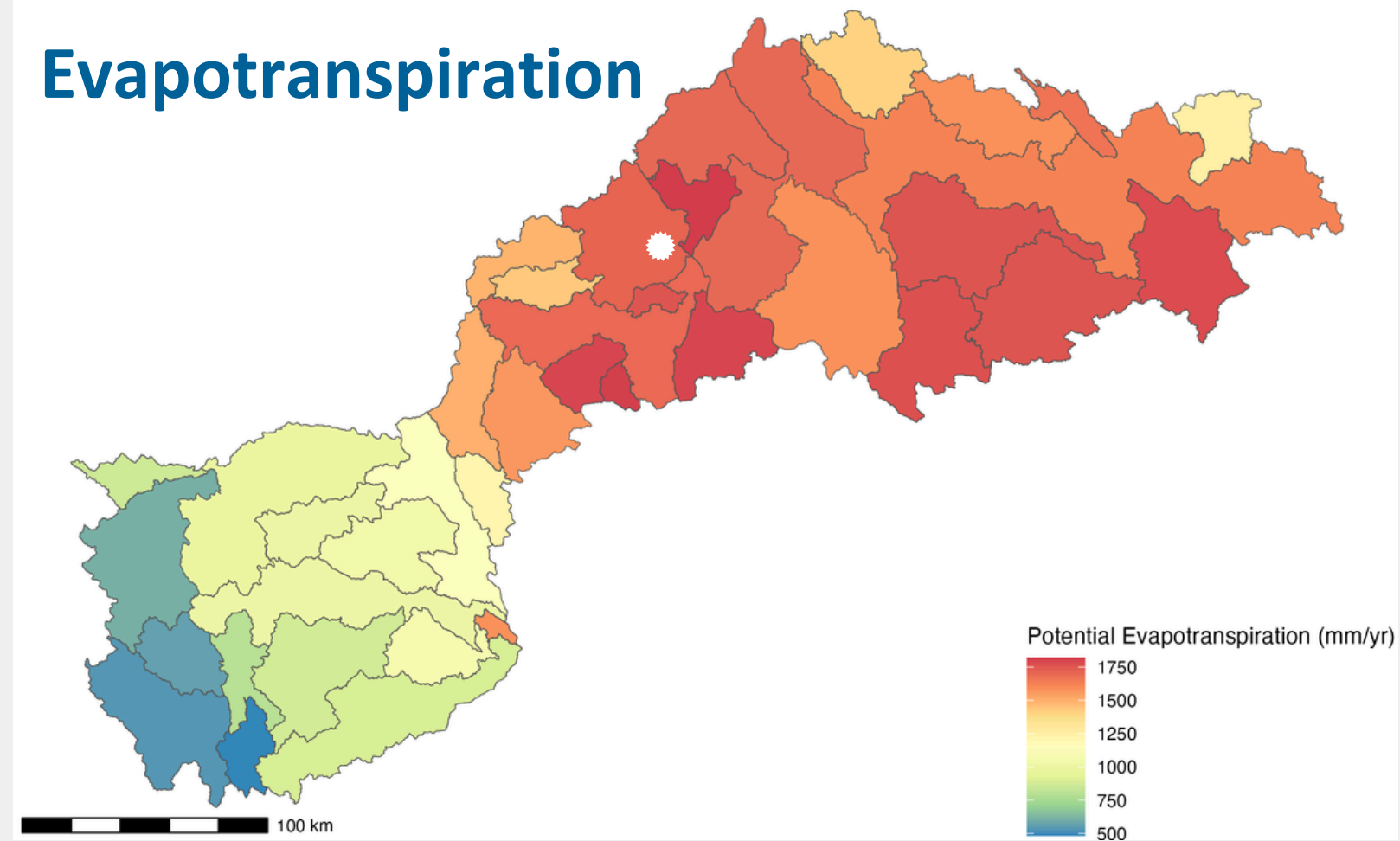
Precipitation



Runoff



Evapotranspiration





The North Saskatchewan Watershed Alliance is a non-profit, partnership-based organization that leads watershed-scale assessment, planning, and dialogue to support coordinated and informed stewardship of the North Saskatchewan River watershed.



01

VISION

People working together to improve the health and sustainability of the North Saskatchewan River watershed today and into the future.

02

MISSION

To protect and improve watershed health, water quality, and water quantity by:

- Seeking, developing, and sharing knowledge
- Facilitating partnerships and collaborative planning; and
- Working in an adaptive management process.
- Striving to advance the practice of watershed stewardship

WPACS

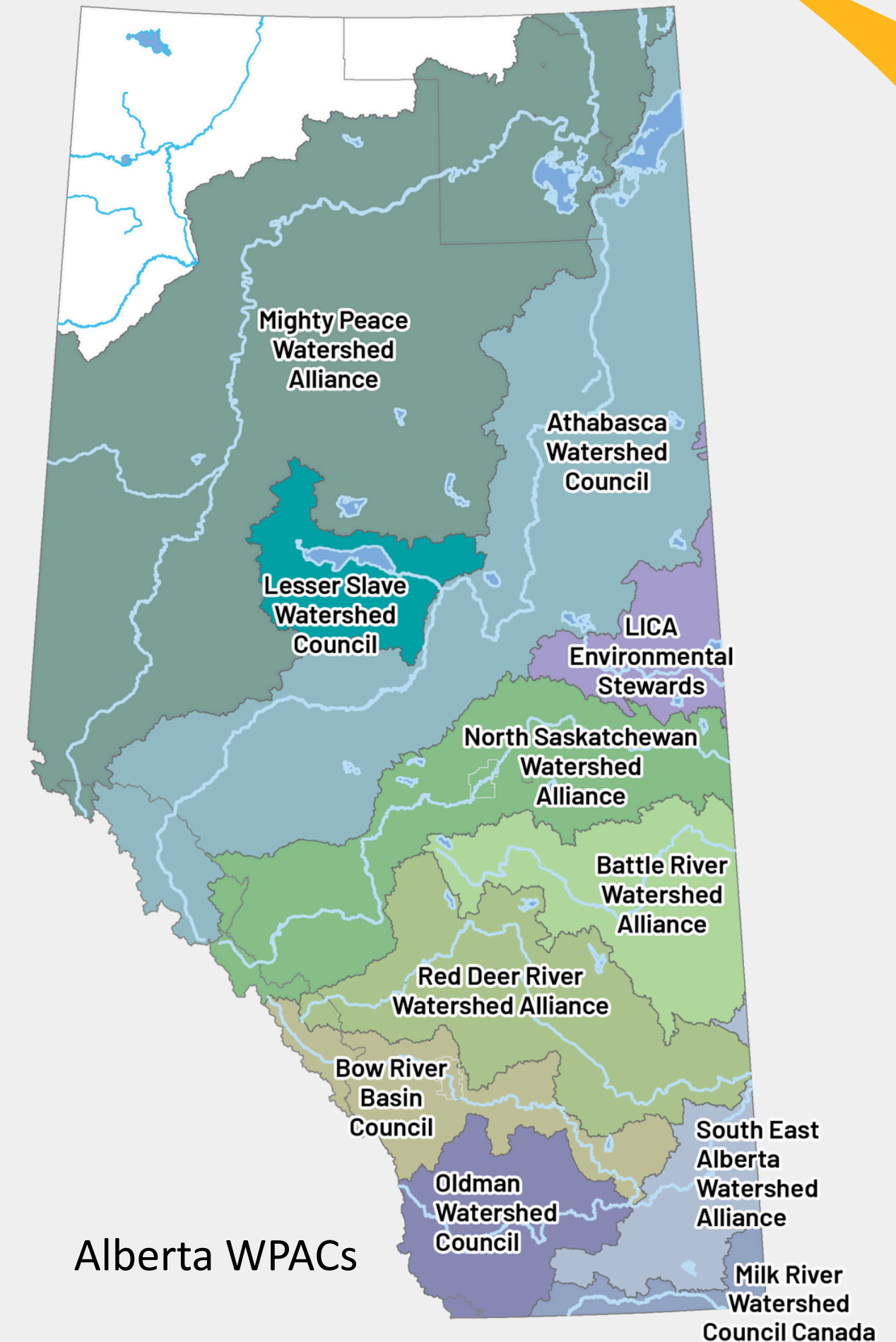
Watershed Planning & Advisory Councils (WPACs) are important stewards of Alberta's watersheds.

They were established to involve communities and stakeholders in watershed management.

"Albertans expressed a strong interest in having a significant role in managing Alberta's water resource, and in directly influencing policy and legislation development, tracking and reporting on the condition of watersheds and influencing change within watersheds."

Alberta Water for Life Strategy, 2003.

The NSWA is the designated WPAC for the North Saskatchewan watershed.





Why Contribute to NSWA?

Water management is a team sport

- *Large geography with widely varying water resources*
- *A broad range of interests, including everything from economic development to recreation*

Water does not follow jurisdictional boundaries

- *Individual growth plans but communal water resources*
- *Reliance on the environmental stewardship of others*

Specialized knowledge and expertise

- *Aquatic ecology and natural systems*
- *Public engagement and education*
- *Project management*



Small investment, Big returns

- Request is 60 cents per capita.
- Municipal contributions are pooled and used by NSWA to support staff (operations).
- Staff lead collaborative projects that leverage contributions into multi-year project funds.

Operational dollars are typically leveraged at 3:1

- Resources and products that would not be feasible as a single municipality.
- Supporting sustainable growth with better information and decision-support.
- Demonstrates fiscal and environmental responsibility.
- Leverage NSWA visibility and collaboration.

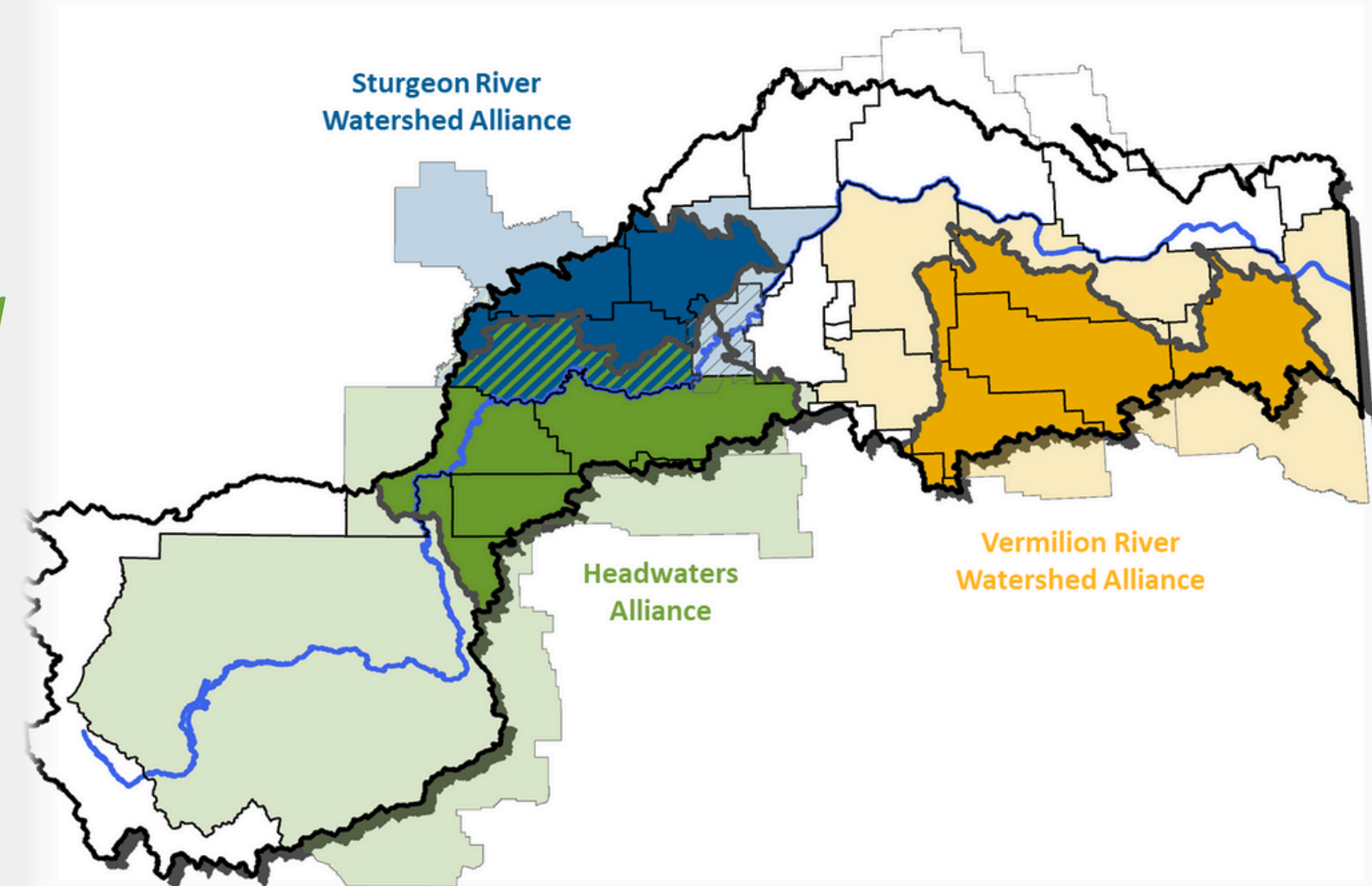
*The requested contribution for Parkland County is \$20,692.20
Only 60 cents per capita.*

Sturgeon River Watershed Alliance

Sub-watershed partnership

- *Facilitated by the NSWA*
- *Advances locally relevant watershed stewardship, engagement, education, and projects*

NSWA provides watershed scale leadership while SRWA focuses on place-based priorities in the Sturgeon River watershed



NSR Water Management Roadmap

Project Drivers

- How much water is available and where is it available?
- How will water availability shift in the future?
- Is water available to support planned and potential growth?
- What might be needed to better manage water availability?

Project Deliverables

1. NSR Hydrological Model (decision-support tool)
 - *Simulate watershed hydrology and water operations*
2. Water management roadmap
 - *Strategies and actions to improve water management*
3. Economic assessment
 - *Economic effects of roadmap strategies*
4. Lived Experience
 - *Experience of people who live on the land*

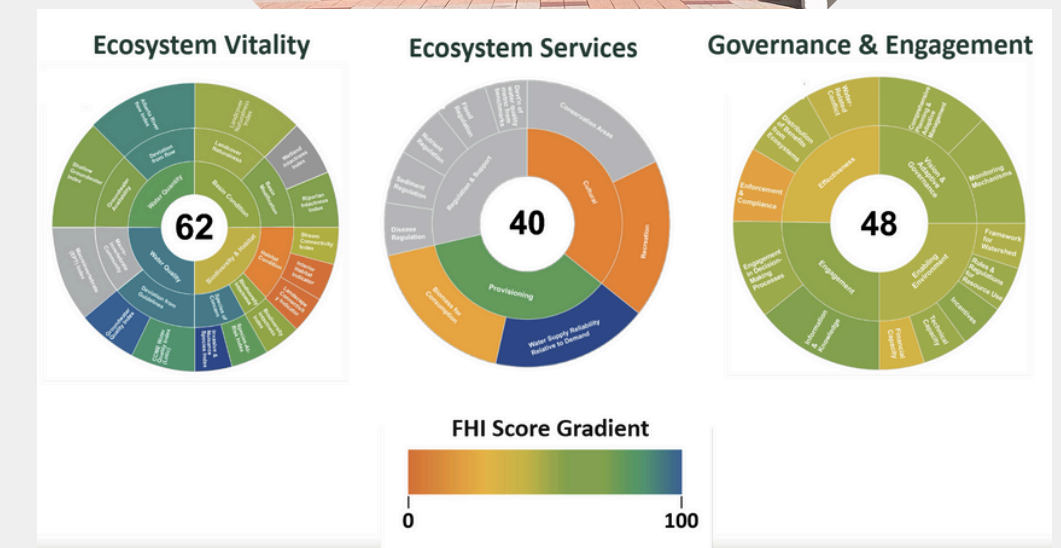
NSWA State of the Watershed

Updated assessment using Freshwater Health Index

- *First use in North America*
- *Ecosystem Vitality*
- *Ecosystem Services*
- *Governance and Engagement*

Activities

- *Adapted FHI Indicators*
- *Hosted engagement and technical sessions*
- *Expanding awareness and use*





YOUTH WATER COUNCIL





YOUTH WATER COUNCIL



[Watch video on YouTube](#)

Error 153

Video player configuration error



Natural Assets



Can complement built infrastructure by reducing long-term costs and managing water-related risk

Working with municipalities to identify where natural assets can deliver the greatest infrastructure and service value

Exploring opportunities to recognize and potentially compensate private landowners for services provided by natural assets on their land

The Modeste Natural
Infrastructure Project



Natural Asset Inventory and
Valuation for Parkland County



Whitemud Creek Watershed
Natural Asset Project



Stay Connected!



www.nswa.ab.ca



north.sask.watershed



NorthSaskRiver



@NorthSaskRiver



northsaskriver