

MR,ER,ERE Policy and RSMM

Planning and Development Services

Agenda

- 1) RSMM Overview
- 2) Policy Changes Overview
- 3) Next Steps



Purpose

- The purpose of the Riparian Setback Matrix Model (RSMM) is to aid in the establishment of Environmental Reserve boundaries, subdivision parcel boundaries and development setbacks in riparian areas when associated with smaller scale developments.
- The RSMM will not be used in conjunction with Multiparcel Subdivision or Major Developments.

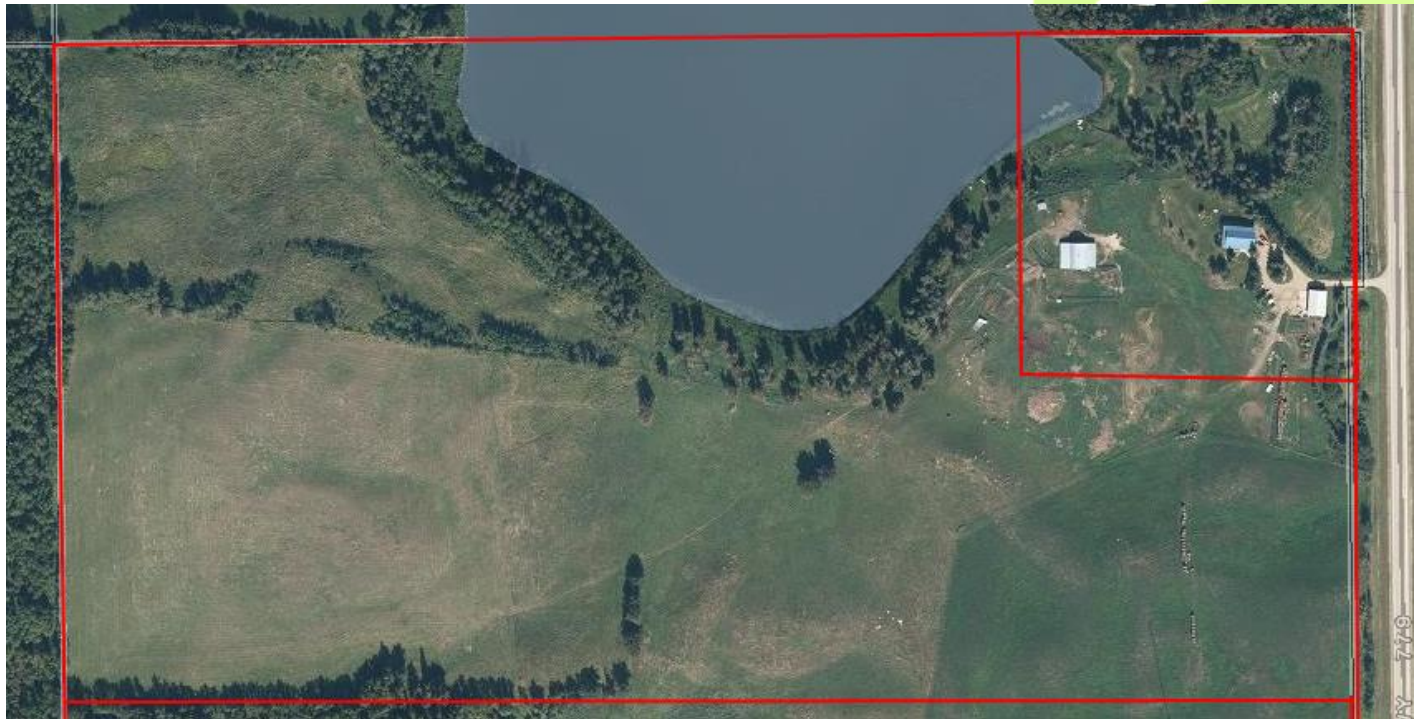
Coefficient Criteria

- 1) Vegetation
- 2) Slope Setback
- 3) Groundwater Susceptibility
- 4) Adjacent Land use



Scenario

- CR District
- 10ac parcel out of existing 80ac

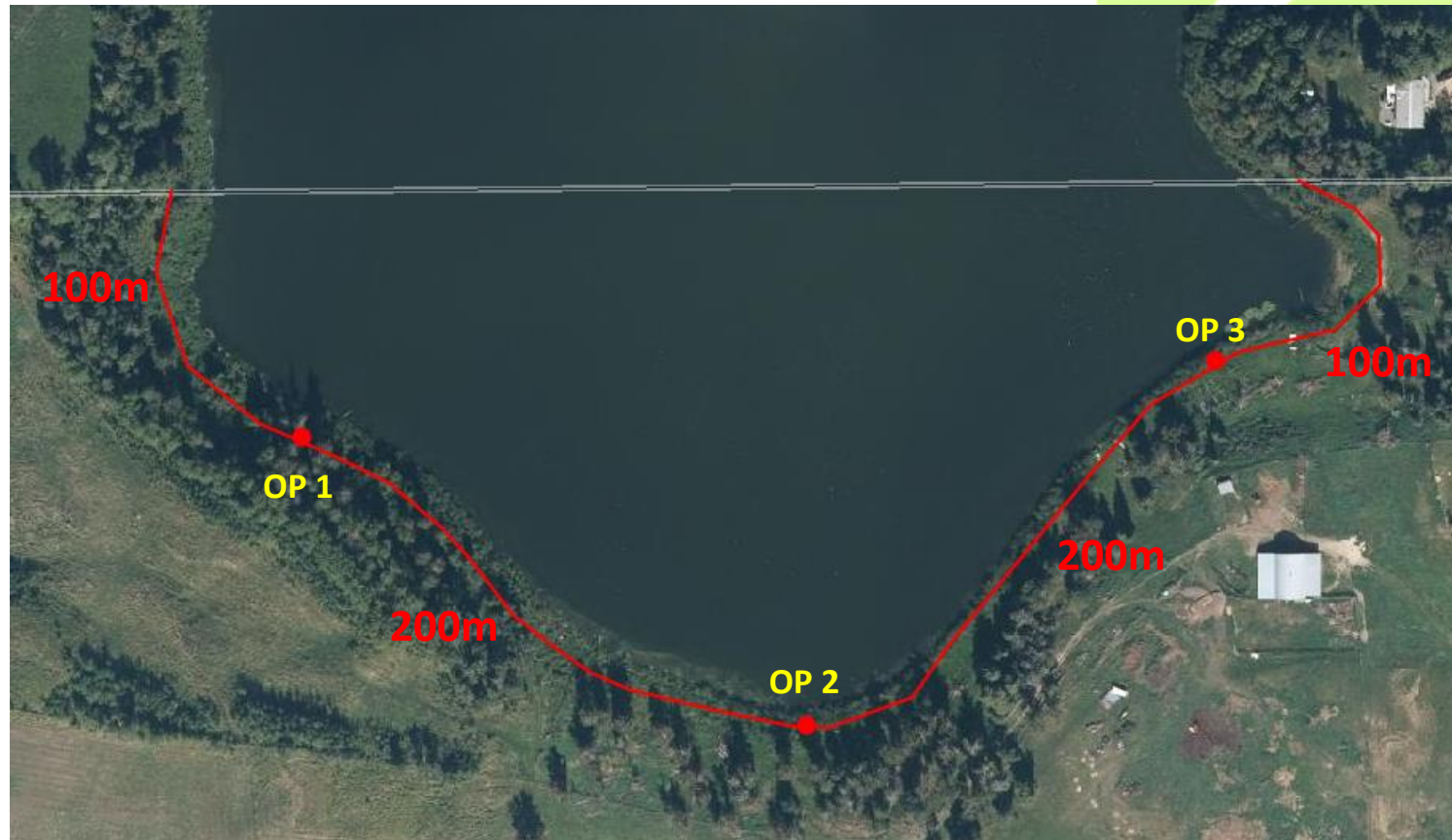


Determination of ER

- Does the proposed subdivision directly affect an Environmentally Sensitive Area? Yes
- Is public access to the Environmentally Sensitive Area Acceptable at this time? No
- Is the subdivision part of a major development or Multiparcel Subdivision? No

Environmental Reserve Easement using the RSMM
for the affected area is required

Step One-Identify Observation Points (OP)



Identify Vegetation

OP1= 20% Forest, 50% Shrub, 30% Herb/Graminoid

OP2= 10% Forest, 60% Shrub, 30% Herb/Graminoid

OP3= 10% Shrub, 70% Herb/Graminoid, 20% Bare

Identify Slopes

OP1= 5%

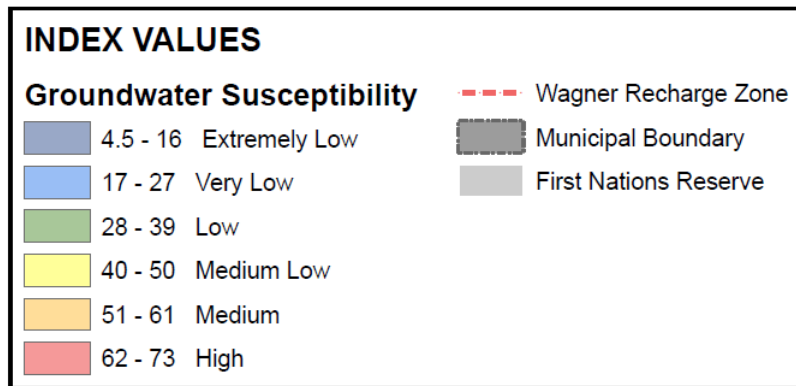
OP2= 2%

OP3= 1%

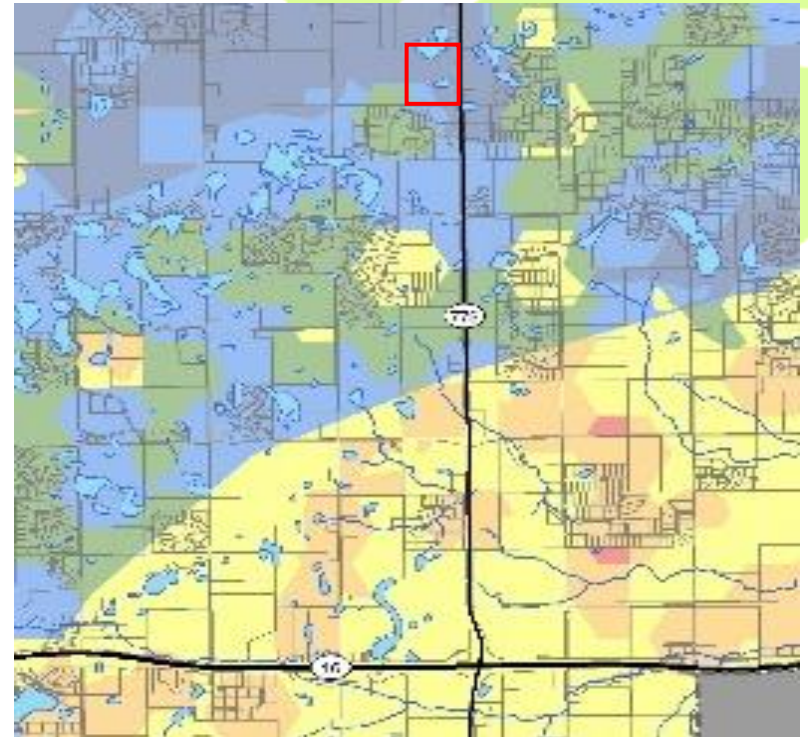


Identify Groundwater susceptibility

Extremely Low



Date: April 7, 2015



Identify Adjacent Land Use



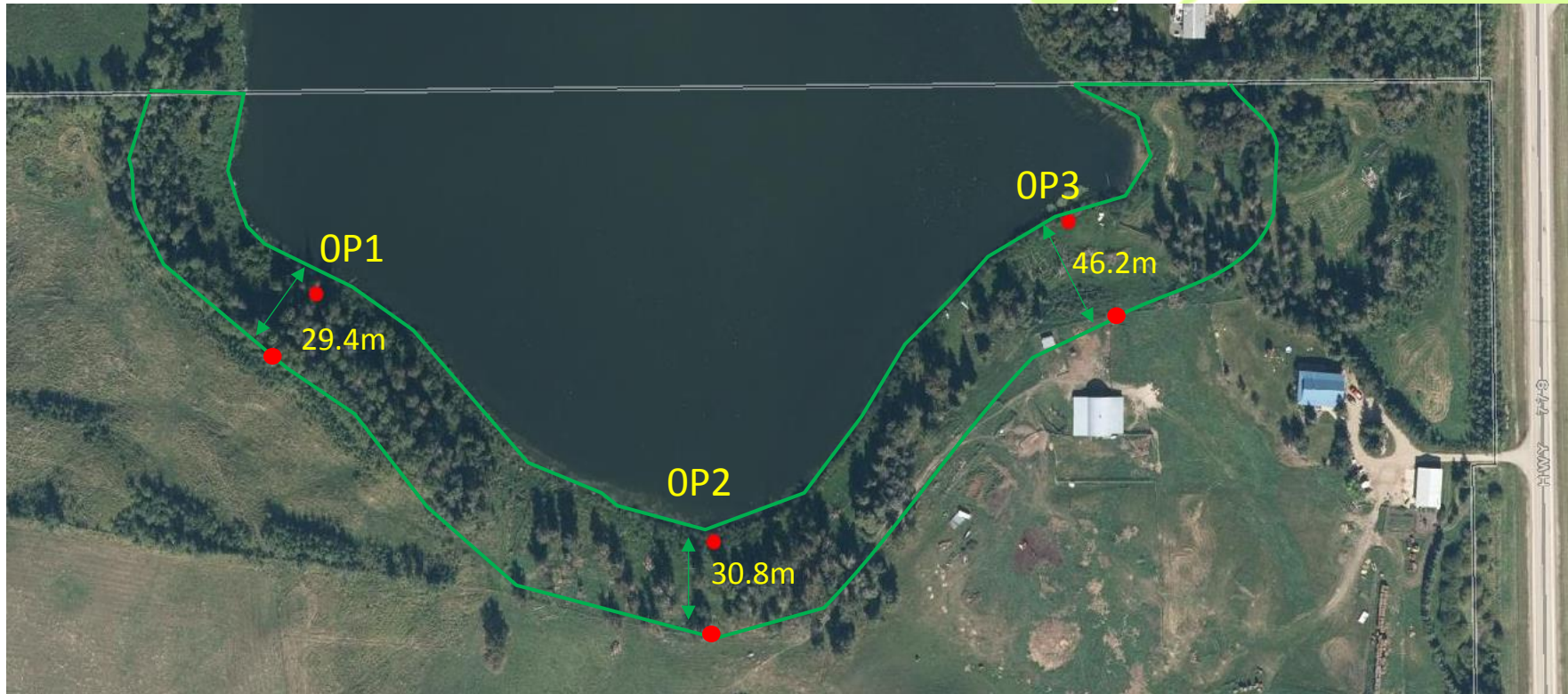
Adjacent Land is Zoned for Country Residential Use

Calculate Setback

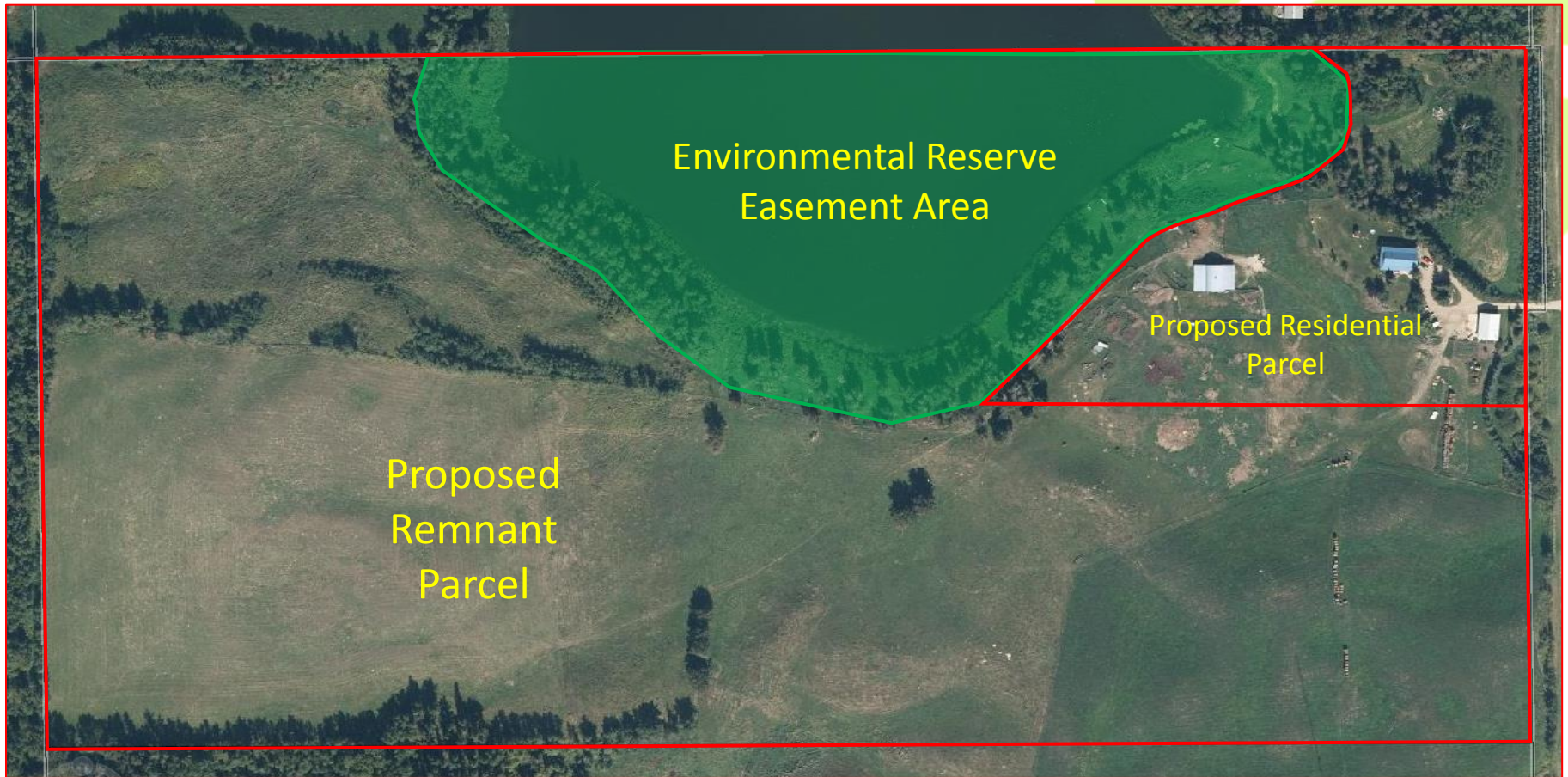
$$\text{OP1} = 21 * 1.4 = 29.4\text{m}$$

$$\text{OP2} = 22 * 1.4 = 30.8\text{m}$$

$$\text{OP3} = 33 * 1.4 = 46.2\text{m}$$



Adjust Subdivision Plan



Changes to Policy PD15

- Based on feedback from the July 7 GPC Administration has defined the forms in which Municipal Reserve will be taken
- The linear corridors of MR were expanded from 6.0m to 10.0m to allow for the construction of improvements should it be deemed appropriate at a later date.
- Parkland County policies **do not** contemplate improvements on Municipal Reserves at this time.

Next Steps

- Administration will present Policy PD15 and the RSMM to the Environment Advisory Committee at the next available meeting.



Questions?