



COMMUNITY SERVICES

2025 FCSS YEAR IN REVIEW

May 5, 2026

BACKGROUND

- Family and Community Support Services (FCSS) is an 80/20 funding partnership between the Government of Alberta and the municipality
- FCSS receives its mandate from the *Family and Community Support Services Act* and the *Family and Community Support Services Regulation*
- Funds programs and services that support individuals, families and communities through preventative social programs and services. Joint FCSS funding must be used for programs and services that are preventative and do one or more of the following:
 - Help people develop independence, strengthen coping skills and become more resistant to crisis
 - Build awareness of social needs
 - Support people in developing skills to have healthy relationships with others
 - Help individuals and communities assume responsibility for decisions and actions that affect them
 - Provide supports that help people participate in the community

PROGRAMS AND SERVICES

- Direct program delivery
- Indirect program delivery

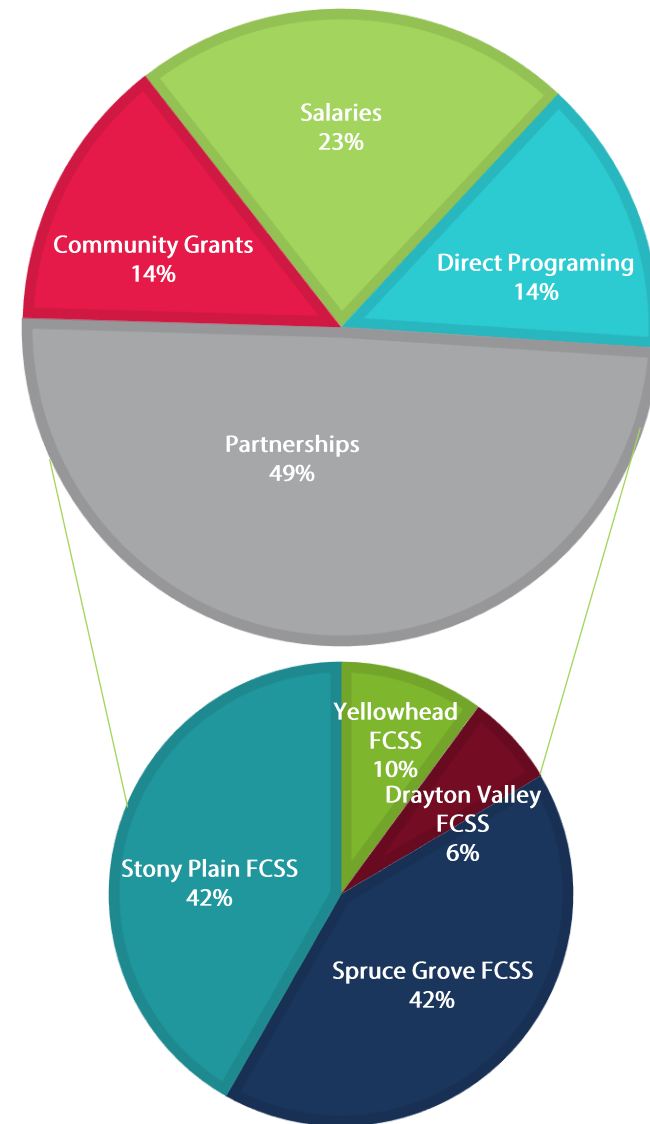
– Partnership agreements with

- ↳ Drayton Valley FCSS
- ↳ Spruce Grove FCSS
- ↳ Stony Plain FCSS
- ↳ Yellowhead County FCSS

– Community Grants

- ↳ APFA
- ↳ Parkland Turning Points Society
- ↳ WestView Health Centre Foundation
- ↳ Tri Cala
- ↳ Change Health
- ↳ Playschools

2025 FUNDING ALLOCATIONS





**PARKLAND COUNTY FCSS
DIRECT DELIVERY**

EARLY YEARS, CHILDREN & YOUTH PROGRAMS AND SERVICES

RED CROSS BABYSITTING COURSE

- 7 courses with a total of 88 participants

RED CROSS STAY SAFE PROGRAM

- 4 courses with a total of 64 participants

PARENT & TOT GROUPS

- Weekly in Entwistle

YOUTH NIGHTS

- Parkland Village for grades 5-8
- Entwistle grades 7-12
- Wabamun grades 7-12

AFTER SCHOOL PROGRAMS

- Two locations grades 2-6

SUMMER DAY CAMPS

- 224 participants, 52% Parkland County residents



Parent & Tot Program and Youth Nights were attended by **90** adults & **575** children in **2025**

ADULTS & SENIORS

Community & Volunteer Income Tax Program

- Offered by our partners in Spruce Grove, Stony Plain, Yellowhead County and Drayton Valley

World Elder Abuse Awareness Day

- Tri-Region awareness campaign in Partnership with Parkland County Libraries

Bridging Connections

- Partnership with the City of Spruce Grove to offer access to an onsite Community Social Worker

Snow Removal Subsidy Program

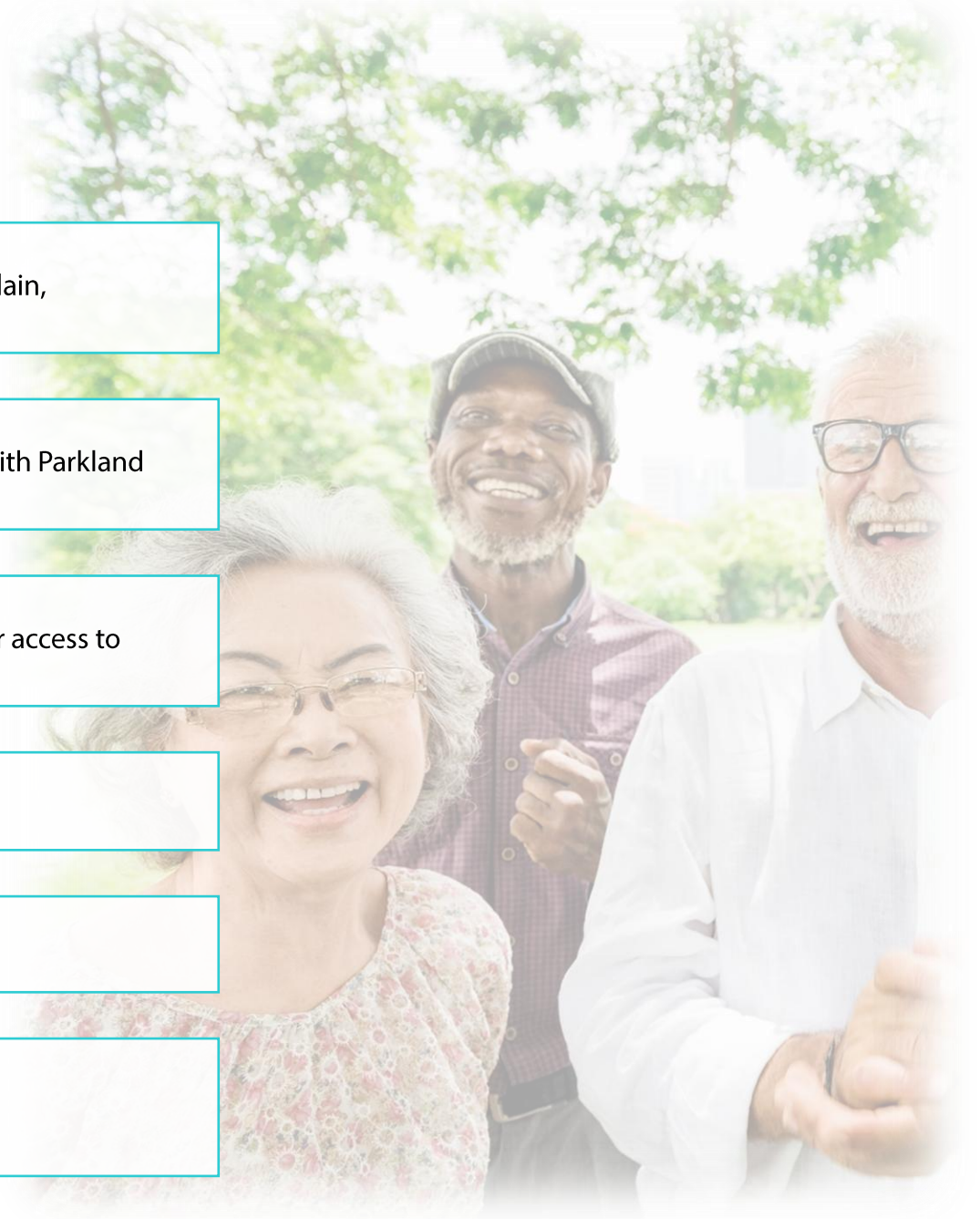
- 93 Residents **accessed** the service

Seniors' Shuttle

- Providing services from West- East weekly

Adult and Seniors Learning Sessions

- Partnership with TriCala
- **81 learners** accessed the program



FAMILIES & COMMUNITY

Community Partnerships

- Missing & Murdered Indigenous People
- Parkland County Libraries Summer Series
- West end Seniors Conference
- Métis Week
- Moose Hide Campaign
- Men's Mental Health Campaign/Drive for Change event
- National Indigenous Peoples Day
- SeniorsConnect online training
- Suicide Prevention Day
- National Day for Truth and Reconciliation
- Poverty Awareness Month
- Family Violence Awareness Month
- International Day for Persons with Disabilities
- Tri Region Elder Abuse Coordinated Community Response member
- Alberta Provincial Housing and Service Needs Estimation Project
- Tri-Region Gender Based Violence Steering Committee

Community Development

- National Volunteer Week
- Community League Weekend including the open-air movie
- Board development
- Community Round Dance
- Wabamun Winter Fest

Neighbourlink Parkland Help Closet

- Support those requiring assistance with food security and basic personal items.

Christmas Supports

- Information & referral

FCSS grants

- 2025 awarded \$126,550

Love Where You Live

- 14 block parties supported, reaching 700 participants

Information & referral services

- 53 inquiries & 22 hours of response time. Complex needs requiring wrap around supports.
- Common trends include access to basic necessities, food security, housing stability and income support.
- Utilize highway signage, print ads & social media to share messaging and campaigns.



Yellowhead County



Yellowhead County
Family and Community
Support Services

2025 Program Overview Family Community Support Services

Presented by: Sierra Goddard, BCYC, CCYCC, FCSS Supervisor





Yellowhead County



fcss

Yellowhead County
Family and Community
Support Services

Program Overview

Current Staffing, FTE of 7.29

- FCSS Supervisor
- Youth Services Coordinator
- Children's Program Coordinator
- Community Development Coordinator
- Community Outreach Coordinator
- Home Support Workers, 5 casual staff
- Summer Youth Workers, 2 four month staff, 2 two month staff
- FCSS Program Assistant

Grants and Agreements

- Special Projects – Intergenerational, Social Seniors, Children and Youth, Community Building
- Non-Profit Preschool
- NeighbourLink (similar to block party)

Collaboration and Awareness Building

- Monthly Newsletter
- Special Events and Awareness Building Activities – Family Dances, Family Violence Prevention Ribbons, etc.
- Hosting Interagency Meetings
- Collaborations with Tri-Region Elder Abuse and Senior Serving Agencies



Yellowhead County



Yellowhead County
Family and Community
Support Services

2025 Data

Total residents served **2348**

Parkland County Residents Served: **454**

- Children and Youth: 134
- Adults: 136
- Seniors: 196

Key trends

- Navigating parenting challenges with teens
- Ability for seniors to age in place





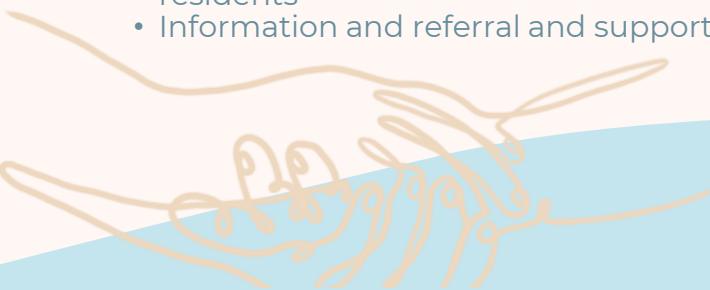
Yellowhead County



Yellowhead County
Family and Community
Support Services

Core Activities Impacting Parkland County Residents

- In-school programming with Entwistle School:
 - Start Strong
 - Generations Connect
 - Roots of Empathy
- Summer Day-Camps
 - Awesome Adventures ages 6 – 11
 - Play Camp ages 3 – 5
 - Life Skills Bootcamp ages 14 – 18
- Volunteer Income Tax program
- Seniors and Adult Workshops and Groups – Women's Conference, Seniors Benefits, Seniors Appreciation, Scams, Caregiver and Alzheimer's/Dementia Support Groups
- Connection with Entwistle Seniors Club
- Home Support: Light house working to provide a sliding scale module currently servicing 8 Parkland County residents
- Information and referral and supports with forms and paperwork.



PARKLAND COUNTY 2025

Spruce Grove
Community Social
Development



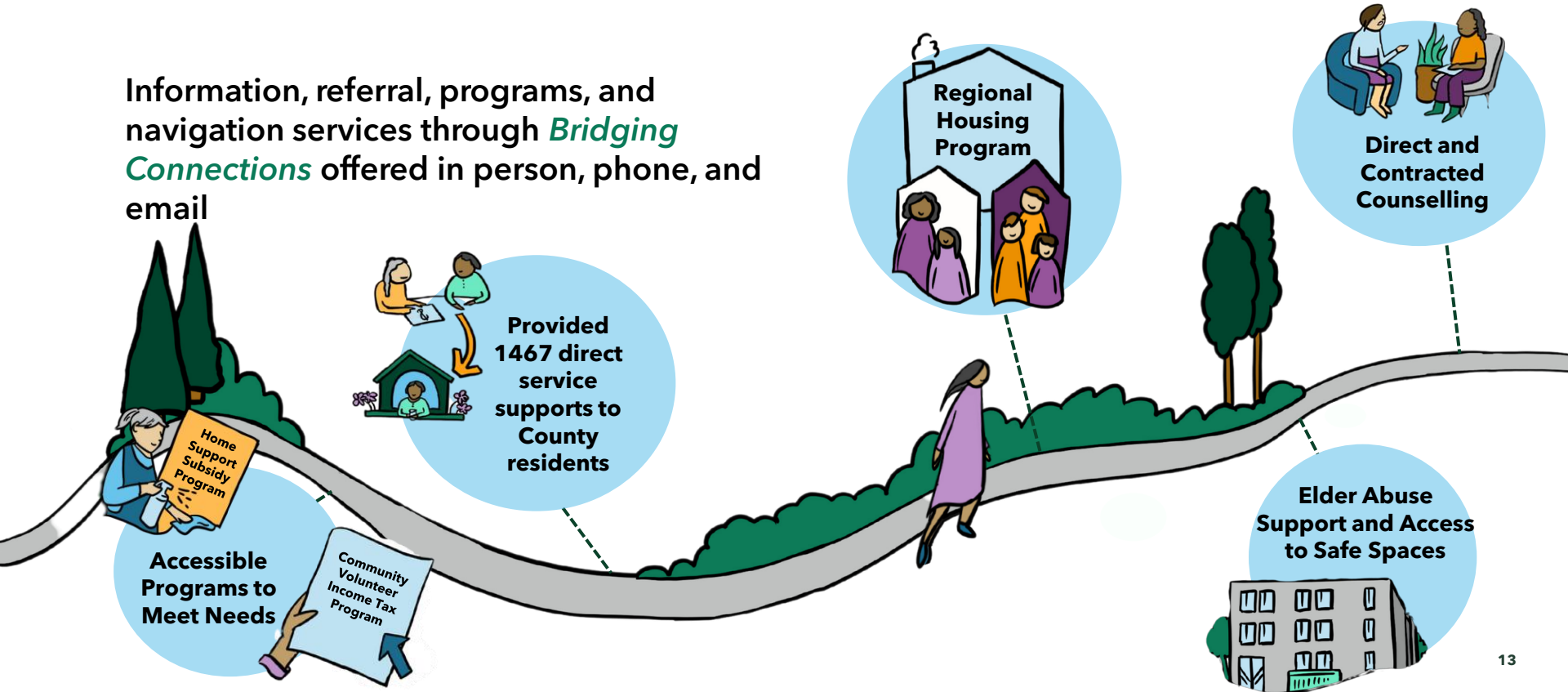
Meet Jane





Individual & Family Support Services

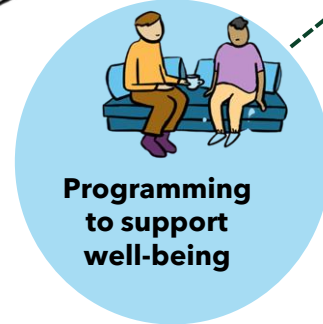
Information, referral, programs, and navigation services through *Bridging Connections* offered in person, phone, and email





Community Strategies

Programs, events, activities, and partnerships through *Community Development* initiatives





Looking Forward to 2026

Kickstand Youth Integrated Services

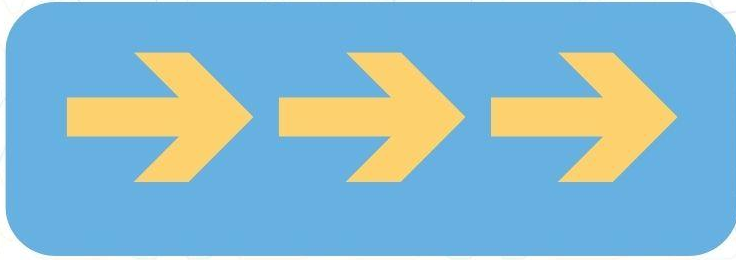
447 King Street, Spruce Grove, AB



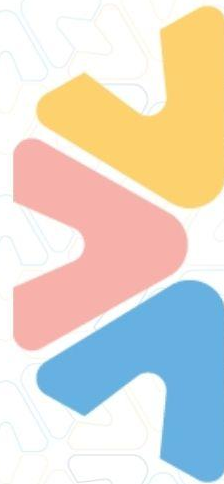
Expansion of Bridging Connections

Parkland County Community Navigator





Locally driven initiatives to enhance the social well-being of individuals, families, and community through prevention.



fcss

**Drayton Valley & District
Family and Community
Support Services**

SERVICE DELIVERY MODEL:

WE PROVIDE SERVICES TO OUR COMMUNITY IN 3 WAYS

Direct Services



Belonging

We reduce the effects of social isolation when people feel connected and a sense of belonging.

Building Empathy

We respect one another and thrive on compassion and mutual support for our friends and neighbours.

Access to Supports

We enhance our resilience and reduce our vulnerabilities when we have improved access to supports.

Mental Wellness

Nurturing social connections and improving coping strategies promotes overall mental well-being.

Indirect Services



Connection

We support programs and services that promote and encourage connection among people.

Volunteerism

We build a sense of shared purpose, social cohesion, and collective commitment to local needs through volunteerism.

Mental Health

FCSS funded programs and services support individuals, promote well-being, and reduce stigma.

Community Development



Service Delivery Gaps

FCSS helps to enhance community well-being by supporting collective action to improve access to programs and services offered by other levels of government and organizations in the areas of:

Poverty and Income Inequality

Mental Health and Wellness

Housing and Homelessness

Community Gathering Spaces



EARLY YEARS, CHILDREN & YOUTH PROGRAMS

INDIRECT PROGRAMS (GRANT FUNDED)

- BRIGHT FUTURES - HEALTHY TOGETHER PROGRAM- 21
- COMMUNITY PARENTING COALITION- SANTAS WORKSHOP-54
- DRAYTON VALLEY MUNICIPAL LIBRARY- SUMMER READING CLUB-11
- HEALTHY COMMUNITY COALITION- INDIGENOUS YOUTH CONFERENCE
- EPBR PUMPKIN WALK- 90
- SUMMERWEEN-37

DIRECT PROGRAMS

- SKATEPARK JAM- 17
- DISCONNECT TO CONNECT-111

TOTAL PARKLAND COUNTY PARTICIPANTS-341

ADULT PROGRAMS

INDIRECT PROGRAMS (GRANT FUNDED)

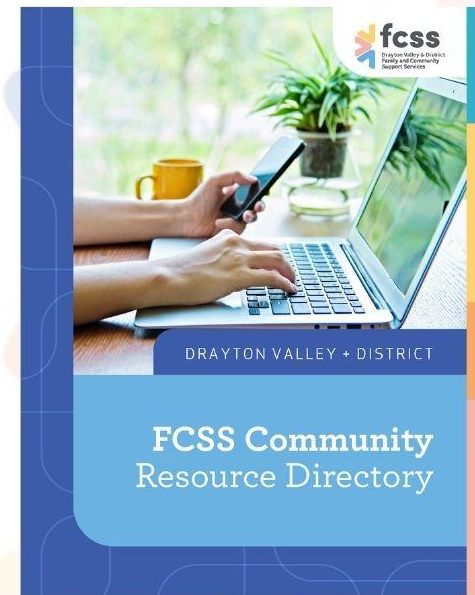
- PATHWAYS COUNSELLING CENTRE- 5
- DRAYTON VALLEY AND AREA FOOD BANK VOLUNTEER COORDINATOR-52
- DRAYTON VALLEY COMMUNITY LEARNING ASSOCIATION- COMMUNITY CONNECTIONS -15
- OPPORTUNITY HOME VOLUNTEER COORDINATION-2
- MOVING FORWARD BEYOND ANGER AND ANXIETY-9
- PEMBINA CRISIS CONNECTION SOCIETY-25

DIRECT PROGRAMS

- SERVICE CANADA -9
- CANADA REVENUE AGENCY-8
- RESOURCE NAVIGATION AND REFERRALS-42
- INFORMATION SERVICES-217
- CANADA DAY-200
- MENTAL HEALTH CHILLI COOK OFF-12
- COMMUNITY VOLUNTEER INCOME TAX PROGRAM-64
- COMMUNITY RESOURCE DIRECTORIES-200
- TRUTH AND RECONCILIATION-7



TOTAL PARKLAND COUNTY PARTICIPANTS-867



SENIORS PROGRAMS

INDIRECT PROGRAMS (GRANT FUNDED)

- ALIVE 55 PROGRAM (MOVEMENT BASED SOCIAL CONNECTION PROGRAMS)-19

DIRECT PROGRAMS

- HOME SUPPORT-1
- INFORMATION SERVICES, REFERRALS AND NAVIGATION-77
- SENIORS WEEK INTERGENERATIONAL CONFERENCE-8
- SHRED-IT TRUCK-8

TOTAL PARKLAND COUNTY PARTICIPANTS-113

**UPCOMING:
MOBILE SENIORS OUTREACH PROGRAM
TOMAHAWK & MOON LAKE**



COMMUNITY DEVELOPMENT

INDIRECT PROGRAMS (GRANT FUNDED)

- EMPOWER & ENGAGE EVENT BEEHIVE SUPPORT SERVICES ASSOCIATION-10
- THIS IS DRAYTON VALLEY LETS VOLUNTEER- ONLINE VOLUNTEER PLATFORM-10
- SOCIAL CONNECTIONS WORKSHOP-3

DIRECT PROGRAMS

- VOLUNTEER APPRECIATION -40
- SERVICE PROVIDER WORKSHOPS-8
- DRAYTON VALLEY INTERAGENCY GROUP-9

TOTAL PARKLAND COUNTY PARTICIPANTS-80



In 2026
369 Volunteers
contributed
12,796 Volunteer Hours

1401 Total Parkland County Residents
supported in 2025 this is approximately
9% of our population served

Access to Supports

Community Referrals and Information Services

Community Resource Directory

AHS ID Program

Safe Document ID & Storage

Community Volunteer Income Tax

Resource Navigation - more in depth than referrals/information services, often multiple longer appointments.

Service Canada Presentations & Outreach

CRA Presentations & Outreach

FCSS Free Phone Booths

Preventative Social Programs for Seniors

Snow Angels

Home Support Programs

Seniors Newsletters

Intergenerational Programs

Senior Appreciation Week Event- June 1-7th

Information Workshops and Series

Mobile Outreach and Support



Workshops & Community Events

Making Financial Cents

Family Day Disconnect to Connect

Workshops for Service Providers

Canada Day

Skate Park Jam

Block Parties

Collaborative Community Development & Volunteers

Grants For Community Groups

This is Drayton Valley- Lets Volunteer Online Platform

Volunteer Recognition Grants

Collaborations and Committees

Drayton Valley Interagency Group

Collaborative Hub Model

Health Community Coalition

DV Comprehensive Family Violence Institute

Newcomers Support Team

Education & Awareness Working Group

FCSS Edmonton Evergreen Region

Drayton Valley & District Community Learning

Seniors Service Provider Community Of Practice

FCSS Regional Older Adult Coordinators

Community Parenting Coalition

Truth & Reconciliation Planning Committee

Town of Stony Plain
2025 Update to
Parkland County Council
May 5, 2026



Community and Social Development Overview



Belonging

Well-being

Engagement

Collaboration

Community and Social Development supports families and individuals in all life stages through prevention-focused programs, to promote and maintain social wellness for a healthy community

Community and Social Development portfolios

- Wellness
- Inclusion
- Poverty Reduction
- Healthy Relationships
- Youth Engagement
- Volunteerism and Civic Engagement





Collaborations



Partners



Outcomes



Challenges



Parkland County

2026 FCSS PRIORITIES

1) Prevention & Early Intervention

Priority focus:

- Strengthening coping skills, resilience, and independence
- Early identification of at-risk individuals and families
- Parenting supports and early childhood development
- Mental wellness and life skills programming

2) Children, Youth & Families

Priority areas:

- Positive youth development and mentorship
- Family life education (parenting, relationships, financial literacy)
- Safe, inclusive youth spaces and after-school programming
- Early childhood socialization and development

3) Social Inclusion & Community Connection

Priority areas:

- Reducing isolation (especially in rural areas)
- Supporting newcomers and diverse populations
- Volunteerism and community engagement
- Intergenerational programming

4) Information, Referral & Navigation

Priority areas:

- Helping residents understand and access services
- Coordinating across systems (health, social, education)
- Supporting vulnerable residents before crisis

2026 FCSS PRIORITIES

5) Rural Service Access & Equity

Priority areas:

- Addressing service gaps in rural/hamlet areas
- Outreach and mobile programming
- Digital inclusion (access to services/info)
- Transportation barriers

6) Indigenous & Cultural Inclusion

Priority areas:

- Cultural awareness and reconciliation initiatives
- Partnerships with Indigenous communities
- Inclusive programming reflecting local demographics

7) Seniors' Well-being & Aging in Place

Priority areas:

- Social connection programs to reduce loneliness
- Transportation and mobility supports
- Aging-in-place supports (non-medical)
- Caregiver support and respite

QUESTIONS