



CLIMATE CHANGE ACTION

COUNCIL JUNE 25, 2024

CONTEXT/BACKGROUND

- Strategic Planning direction on climate action- preliminary support for Climate Change Adaptation Plan and corporate emissions reduction
- New grant funding opportunities with varying timelines
- Opportunity to leverage \$363,000 in grant funding for:
 - Facilities Energy Management Plan
 - Climate Change Adaptation Plan



PROJECT 1: FACILITIES ENERGY MANAGEMENT PLAN OBJECTIVES + SCOPE

Scope:

1. Two Grant Applications
2. 2-Year Temporary Position
3. Energy Audits
4. Facilities Energy Management Plan
5. Building Retrofits

Benefits: cost and energy savings for County buildings,
increased capacity for climate action

Why Both?

- Grants may be able to offset each other's costs
- MEM could manage FCM Grant/Contract

PROJECT 1: FACILITIES ENERGY MANAGEMENT PLAN FUNDING

- Supported by two grant programs
- MCCAC's Municipal Energy Management (MEM) Program
 - Funds 2-year temporary position & energy efficiency projects
 - Supports work already planned in building lifecycles
 - 40-80% of salary to a max of \$120,000 plus up to \$60,000 in project rebates
 - Municipal contribution \$54,000 over 2 years
- FCM's GHG Reduction Pathways Feasibility Study
 - Funds energy audits for 10-14 buildings & 20-year plan to reduce energy use
 - Plan will allow retrofit integration into building lifecycle plans to save costs
 - 80% of eligible costs, estimated at \$169,000
 - Municipal contribution \$34,000



SUCCESS IN OTHER MUNICIPALITIES

City of St. Albert:

- \$194,000 annual cost savings
- Annual electricity and natural gas savings equivalent to 324 homes
- Received over \$1.1 million in grant funding
- Annual GHG savings equivalent to 387 passenger vehicles

City of Leduc:

- \$58,000 annual cost savings
- Over 960,000 kw/yr & 1,800 GJ/yr energy savings
- Received over \$1.8 million in grant funding
- Annual GHG savings of over 860 tonnes

Other participants: Brazeau County, Sturgeon County, Strathcona County, Foothills County, Athabasca County, Stony Plain, Spruce Grove

PROJECT 2: CLIMATE ADAPTATION PLAN OBJECTIVES + SCOPE

Scope:

1. 1 grant application
2. Leverage additional capacity from MEM
3. Communications/Engagement Plan
4. Local Vulnerability and Risk Assessment
5. Adaptation Plan Actions (immediate/5 year/10+ year)

Benefits: lower risk for County operations, local economy, ecosystems, and community health and wellbeing while reducing the cost of inaction.

PROJECT 2: CLIMATE ADAPTATION PLAN FUNDING

- Supported by the FCM's Local Leadership for Climate Adaptation Grant
 - Funds community-scale risk assessments, adaptation plans, adding a climate lens to asset management or land use planning, etc
 - Program stream will open Fall 2024
 - Plan will leverage work completed by the EMRB
 - 60% of eligible costs estimated at \$80,000
 - Municipal contribution \$32,000

CLIMATE RESILIENCY

In December 2023, the Edmonton Metropolitan Region Board (EMRB) received *From Risk to Resilience: EMRB Climate Resilience Study*. The Study identified the risks, vulnerabilities and opportunities that our region will face in the future based on climate projections and impact scenarios.

The report suggested that climate change has already had significant economic consequences and could continue to do so in the future. It emphasized that adaptation is not the responsibility of one entity or organization, but a collaborative effort across society.

CLIMATE RISKS IN OUR REGION

The following are examples of climate hazards requiring us to take adaptable action:



Adaptability is needed from citizens, government, and industries. Included in the report are several adaptation actions for consideration to move the region from risk to resilience.

The full report can be found on the EMRB website: www.emrb.ca

The region's built and natural systems are intricately linked. As our region welcomes new people and jobs, and the demand to develop infrastructure grows, it is critical to apply a climate lens to build resilience and minimize future risks.



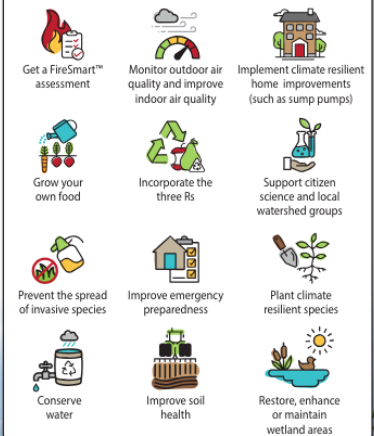
WHAT IS CLIMATE ADAPTATION?

Climate adaptation focuses on building resilience and adjusting to climate changes that are projected to occur in the future and those that are already happening.

WHERE CAN I TAKE ACTION?



WHAT CAN I DO?



NEXT STEPS/RECOMMENDATIONS

- Council approve up to \$483,000 for climate change action projects
 - Facilities Energy Management Plan: \$403,000
 - Climate Change Adaptation Plan: \$80,000
- Funding Sources:
 - Environmental Reserve Funding: \$120,000
 - Grant Funding: \$363,000
 - ↳GoA MEM Program Grant @ \$180,000 (2 years)
 - ↳FCM GHG Reduction Pathway Feasibility Grant @ \$135,000
 - ↳FCM Local Leadership for Climate Adaptation @ \$48,000
- Administration proceeds with grant applications
- Project begin Q1 2025, conditional on grant approval