



# Q1 2026 Update Operations Services

## Engineering Services

April 7, 2026



# Engineering Services

## Q1 2026 Update

Several areas and projects will be highlighted within this update.

We are at the start of a new construction season so the updates will primarily consist of progress to date on new initiatives and upcoming activities to be aware of.



Updates provided on the following project types:

Roads

Bridges

Stormwater

Water

Wastewater

Development Activity

“Other” Activity

# Roads

Carry-Forward Projects from 2025



## Prospector's Point Road

Design 2024, Construct 2025-2026



## Sundance Road

Design 2025, Construct 2026



## 261 Street Reconstruction

Design 2025, Construct 2026



## 114 Avenue Widening

Design 2023, Construct 2025-2026

*\* Delays with land acquisition continue and project cannot start until this process is complete.*



# Roads

NEW Projects in 2026



## Twp 534, RR 272 to West of RR 271

Design, Construct 2026



## Lakeshore Estates Subdivision

Design 2026, Construct 2027-  
2028



## Subdivision Surfacing Program

Construct 2026



## Asphalt Surfacing Program

Construct 2026



## Seal Coat Surfacing Program

Construct 2026





# Asset Management – Paved Roads

Output from our Road Rating program indicates we are doing very well managing our paved road network

G-F-P	SCRs	2018	2019	2020^	2021	2022	2023	2024	2025
Good	1, 2, 3	73.4%	74.7%		82.6%	82.7%	81.2%	86.1%	86.5%
FAIR	4, 5, 6	22.9%	22.2%		14.8%	13.8%	17.3%	12.8%	12.1%
POOR	7, 8	3.2%	2.7%		1.6%	3.5%	1.4%	1.0%	1.3%
Unrated		0.4%	0.5%		1.1%*	0%	0.1%	0%	0.3%
<b>TOTAL</b>		<b>100%</b>	<b>100%</b>		<b>100%</b>	<b>100%</b>	<b>100%</b>	<b>100%</b>	<b>100%</b>

] 98.6% 😊

<sup>^</sup> 2020 condition data was not collected during COVID

\* Unrated 2021 value high with integration of Wabamun into our system

The summary above provides a snapshot of our paved road inventory. We have 98.6% of our inventory in the fair to good category. This indicates we are in a very strong position and have done an excellent job funding and caring for our paved road assets. It doesn't mean that we don't still have potholes, rutting, and other road failures ... but it does mean that the volume of repairs and resources required to keep our network in good overall condition is sustainable.

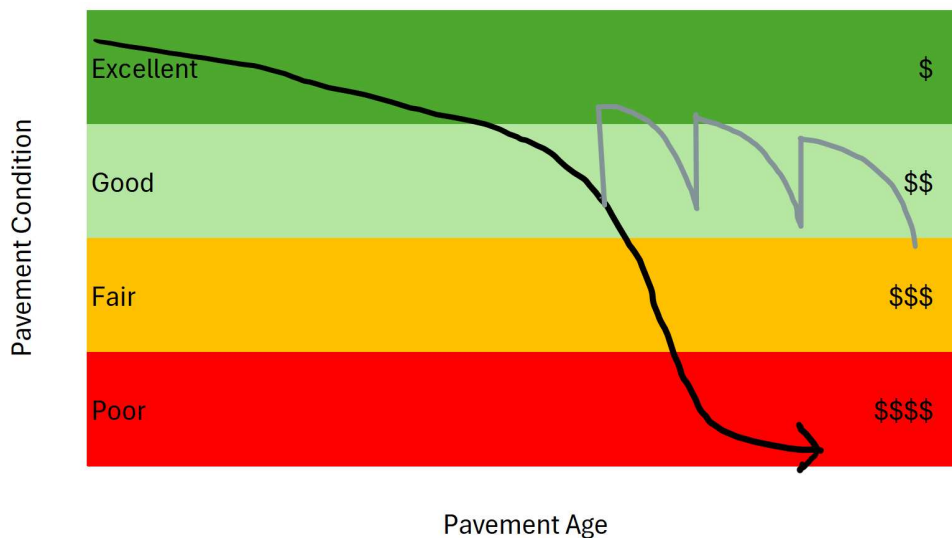
Moderate increases over time to keep up with inflation and directly focusing our rehabilitation methods is the key to long term

success!



# Asset Management – Paved Roads

## Pavement degradation curve vs investment needed to maintain



*Grey line represents an investment in the network such as Seal Coat Surfacing or Asphalt Overlay.  
Small scale investment defers high-cost improvements*

The black line represents the deterioration of pavement over time. The shape of the curve represents the rate at which costs increase based on overall condition state. The farther the pavement is permitted to degrade, the higher the cost to bring it back up to desirable standard.

We maintain our network to a high standard, and have strong programs in place to keep it there. This enables us to be highly efficient with available funds and to maintain a high quality road network with minimal ongoing investments.

# Bridges

Pending Grant & Budget Approval



**BF# 07409**

*(RR 32, North of Duffield)*

Design 2026, Construct 2026



**BF# 00110**

*(RR 271, 800m south of Twp 534)*

Design 2025, Construct 2026

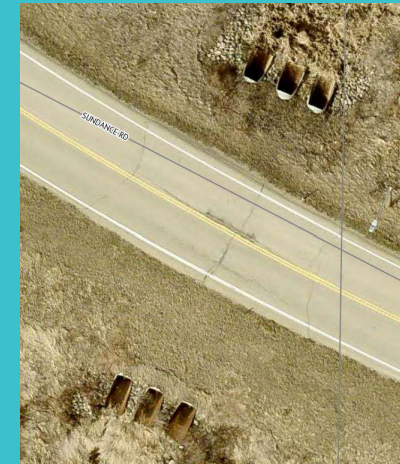


**BF# 01344**

*(RR 280, South of Twp 531A)*

Major Repairs 2026

*\* The following list of Bridges were submitted for STIP grant approval in November 2025. A response from the province is pending. A follow-up RFD to Council will be required to finalize funding allocations, pending notification of grant approvals.*



**BF# 13218**

*(RR 52, 600m south of Twp 514)*

Design 2024, Construct 2026



**BF# 85064**

*(Sundance Rd, 1.6 Km west of RR42)*

Design 2026, Rehabilitation 2027



**BF# 13517**

*(RR 53, 150m south of Twp 505)*

Design 2024, Rehabilitation 2026



**BF# 70081**

*(RR 73, 1.9 KM south of Twp 530)*

Design 2026, Rehabilitation 2029



# Stormwater



## **Big Lake Rehabilitation**

Design 2025, construct 2026

CIPP Lining in 2026



## **Acheson Zone 3 Rehabilitation**

Design 2025, Construct 2026.

New pipe to address local flooding



## **Rolling Meadows**

Design 2026, Construct 2026-2027

Drainage Channel to address local flooding



## **Wabamun Rehabilitation**

Design 2026, Construct 2027

Lifecycle replacement of storm line





# Water / Wastewater Master Plan 😊

**Master Plans facilitate long term strategic direction for system growth & expansion, but also provide Administration with guidance and direction for land development activities and strategic capital investments. The plan also supports ongoing operational decisions.**

The Water and Wastewater Master Plan (WWMP) was initiated in 2025 as a two-year initiative. A report is being presented to Governance Priority Committee (GPC) on April 21, 2025. This meeting date and presentation will provide the opportunity to discuss this plan in detail and provide guidance to Administration as we work to finalize the direction and complete the strategic plan.

To date, we have gathered background information on the current systems functioning throughout Parkland County and have confirmed the existing operations and capacity of the existing systems, including the regional systems connected to Parkland County.

# Water



## Entwistle Water Loop

Design 2025, Construct 2026



## Acheson Pressure Reducing Valve

Design 2026, Construct 2027



*The water system in Acheson and in Entwistle is a pressurized system. Pressure is controlled through pump stations at the reservoirs and pressure reducing valves at strategic locations within the system.*

*The WILD Water Commission line is a low-pressure system. Low pressure moves water through the system to reservoirs and holding systems that then use pumps to push water to desired location for use.*

# Wastewater



## Entwistle Wastewater Forcemain

Design 2025, Construct 2026



## Acheson Zone 5 Trunk Upgrade

Design 2024, Construct 2026

*\* Delays with land acquisition continue and project cannot start until this process is complete.*



## Entwistle Rehabilitation

Design 2025, Construct 2026



## Acheson Zone 3 I&I Reduction

Design 2025, Construct 2026

*What is I & I?*

- **Inflow** is surface water entering the sanitary system from ditches or top of manholes.
- **Infiltration** is ground water entering the sanitary system through high water table or saturated soils

*Excess water in the sanitary system causes high flow volume in pipes and creates added cost for capital infrastructure through over-sized pipes AND added cost for operating by treating stormwater.*



# Land Development Engineering (LDE)

Planning

Design

Construction

## Highlight:

Development activity within Acheson Area remains very strong heading into Q1 2026.

The LDE Team supports multiple development files through the planning processes. They supervise and coordinate design and construction activities for on-site and off-site servicing, ensuring work is completed to County standards and specifications. Primary focus for the LDE team is ensuring developer contributed assets align with our Master Plan documents and long-term strategic plans.

Multiple large-scale building starts are anticipated with completion of additional serviced lands in Acheson.

Support Planning Applications

Approach Permits

Engineering Design Review

Construction Inspections

Post Construction

Support Economic Diversification

Lot Grading Approvals

Utility Line Assignments

Warranty Inspections

External Agency Construction

# Other Activities

Engineering is working on several other initiatives not reported above. Most are operational in nature or related to inquiries and questions from residents, Council, or business connections seeking advice and input to advance their initiatives.



The following are active initiatives within Engineering:

- Rural Internet Installation
- Yellowhead Mainline (ATCO)
- Acheson & Big Lake TIA Update
- Osbourne & Big Lake Speed Review
- Asset Management
- Service Level Review
- Budget 2027
- ~~WILD Connection to Wab. Prov. Park~~ \* Deferred by Province from 2026

Park



# ATEC and Municipal Neighbours

On January 27, 2026, Engineering provided a presentation and update on several Alberta Transportation and Economic Corridor (ATEC) & adjacent municipal initiatives.

They are listed to the right for information only.



Project Updates provided to Council on Jan 27, 2026 , as follows:

- 1) Hwy 60 Widening and Grade Separation
- 2) Hwy 628 Alignment Functional Plan
- 3) Hwy 16 Widening Functional Plan
- 4) Edmonton Regional Network Study (ERNS)
- 5) Edmonton Regional Household Travel Survey
- 6) Edmonton Regional Goods Movement Strategy
- 7) Hwy 16/ RR 20 Interchange
- 8) Hwy 16A/ RR20 Improvements
- 9) Hwy 16/ Hwy 43 Interchange Paving
- 10) Hwy 16, Gainford to Seba Beach, highway paving and access closures
- 11) FIRA Agreement
- 12) Hwy 779, Stony Plain to Hwy 627 Paving



# Questions