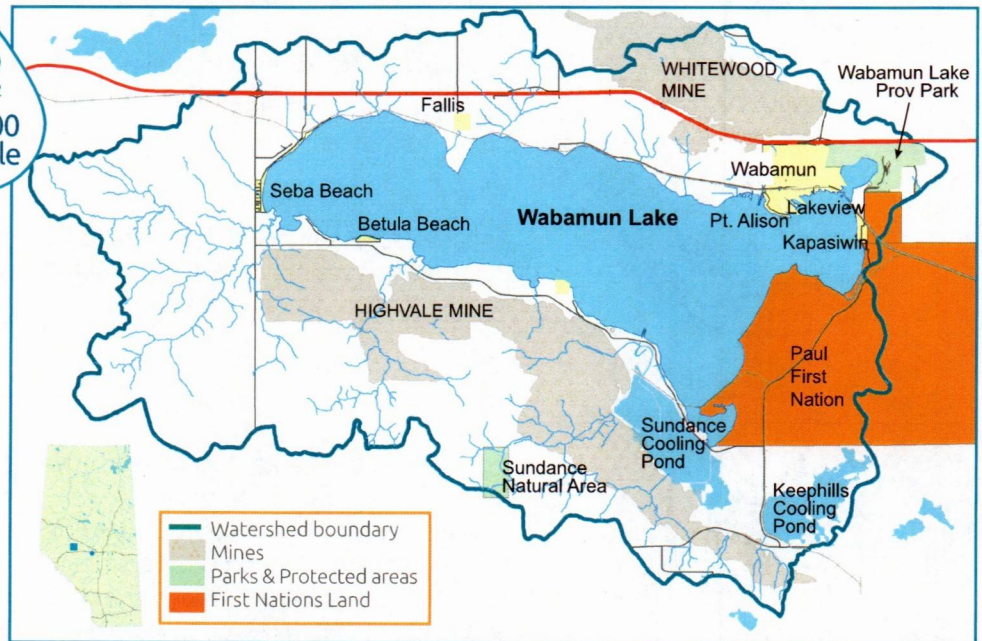


# Wabamun Lake Watershed Management Plan (WLWMP)

## Wabamun Lake

- o 60 km west of Edmonton
- o Known for its Indigenous significance, historic summer villages, fisheries, and local coal mines
- o Wabamun Lake Provincial Park is one of Alberta's most highly used parks
- o One of Alberta's most studied lakes, including the 2004 Schindler report

259 km<sup>2</sup>  
~3,500 people



2006

## Steering Committee for Wabamun Lake Watershed

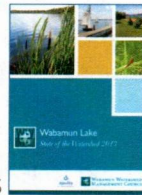
Partners include:

- Wabamun Watershed Management Council
- Five Summer Villages
- Parkland County
- TransAlta
- AB Environment & Parks
- NSWA

2013

## Wabamun Lake State of Watershed Report

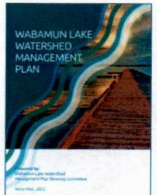
- o Compiles existing knowledge
- o Identifies data gaps
- o Explains watershed issues



2020

## Wabamun Lake Watershed Mgmt. Plan

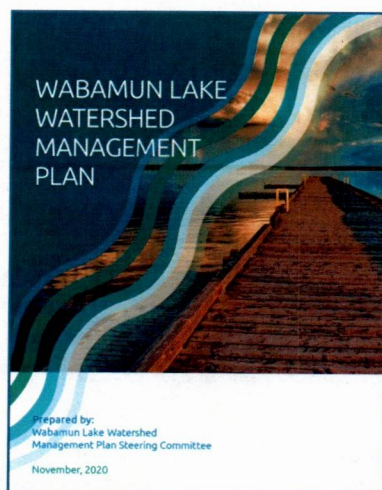
- o Discusses issues & risks
- o Defines goals and objectives
- o Sets priorities



## Wabamun Lake Watershed Management Plan, 2018-2021

### Vision

The Wabamun Lake watershed is a healthy ecosystem with a robust economy and a thriving community that actively demonstrates its collective responsibility to steward the lake environment, for current and future generations.



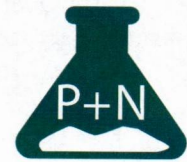
### Key risks for Wabamun Lake



Invasive Species



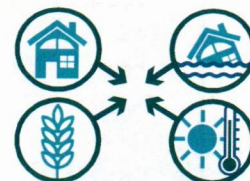
Blue-green algae blooms



Excess nutrients







Climate change



Cumulative impacts



Main Goals	Objectives
 <p>Good Water Quality</p>	<ul style="list-style-type: none"> <li>o Surface water quality is maintained or improved throughout the watershed</li> <li>o Lake users are knowledgeable about and able to adapt to lake levels, which fluctuate with natural variability, thereby contributing to lake health</li> <li>o Groundwater quantity and quality are maintained and protected for human consumption and recognized as a factor in surface water quantity and quality</li> </ul>
 <p>Healthy Aquatic Ecosystems and Biodiversity</p>	<ul style="list-style-type: none"> <li>o Aquatic ecosystem health is maintained or improved</li> <li>o Biodiversity is maintained or improved and the occurrence and spread of invasive species in the watershed is prevented or mitigated</li> </ul>
 <p>Wise land-use</p>	<ul style="list-style-type: none"> <li>o To the extent possible, natural land cover is retained and land use does not impair lake or watershed health</li> <li>o Policies and plans are aligned between authorities and regulatory bodies such that development does not impair lake watershed health</li> <li>o Knowledge needed to manage the Wabamun Lake watershed is gathered and made available to decision-makers</li> </ul>
 <p>Engaged Stewardship</p>	<ul style="list-style-type: none"> <li>o Residents and visitors are knowledgeable about how they can lessen their impact on and contribute to lake health.</li> <li>o The community shares its collective responsibility to be the best stewards of the Wabamun Lake watershed and stewardship programs inspire individual and collective action</li> </ul>

### Priority Focus Areas & Next Steps



Water Quality monitoring programs



Educational activities with focus on invasive species, riparian health and agricultural BMPs



Riparian restoration



Align policies and plans for watershed health



Maintain collaborative Steering Committee