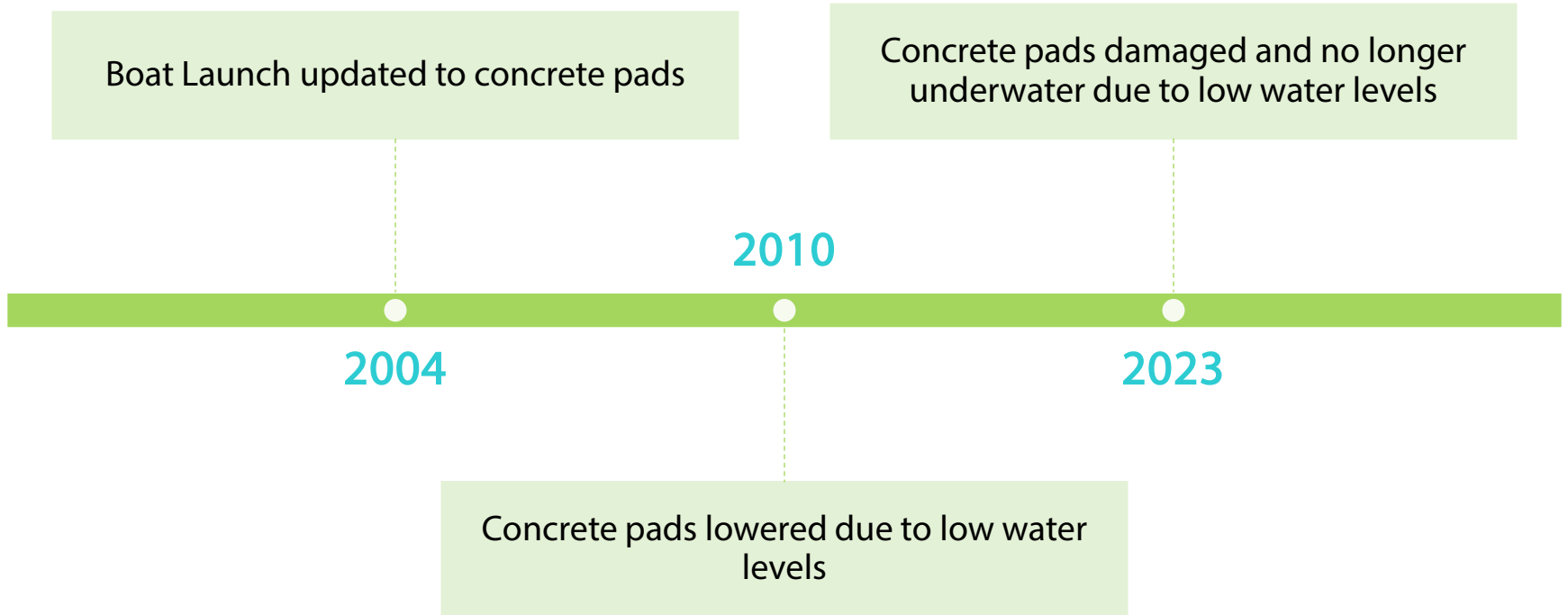




JACKFISH BOAT LAUNCH REPAIRS REQUEST FOR FUNDING

JUNE 25, 2024

JACKFISH BOAT LAUNCH



IMAGES OF CURRENT CONDITION

Jackfish Boat Launch

USE AT YOUR OWN RISK

LAUNCH IS OPEN FOR PUBLIC USE BUT IS IN POOR CONDITION BELOW THE WATER LEVEL

update on timeline for repairs will be posted online when available

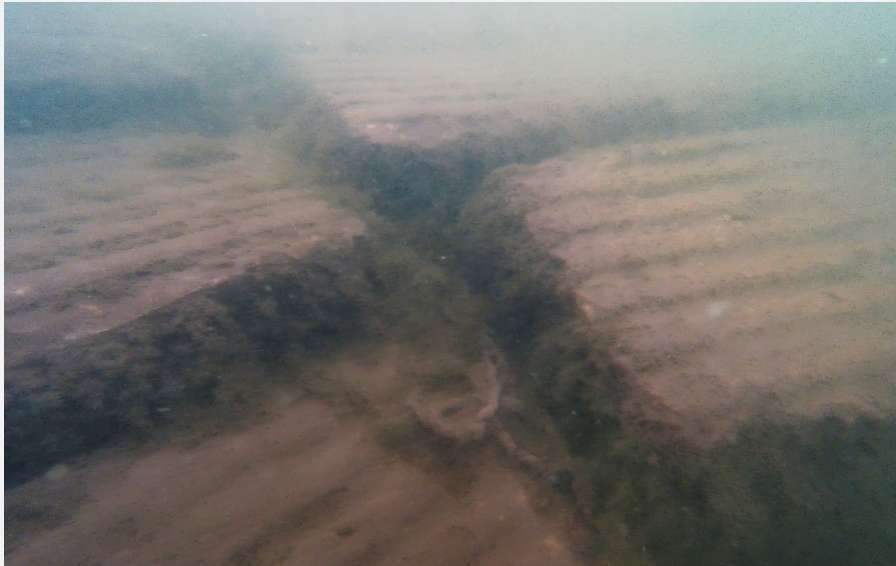
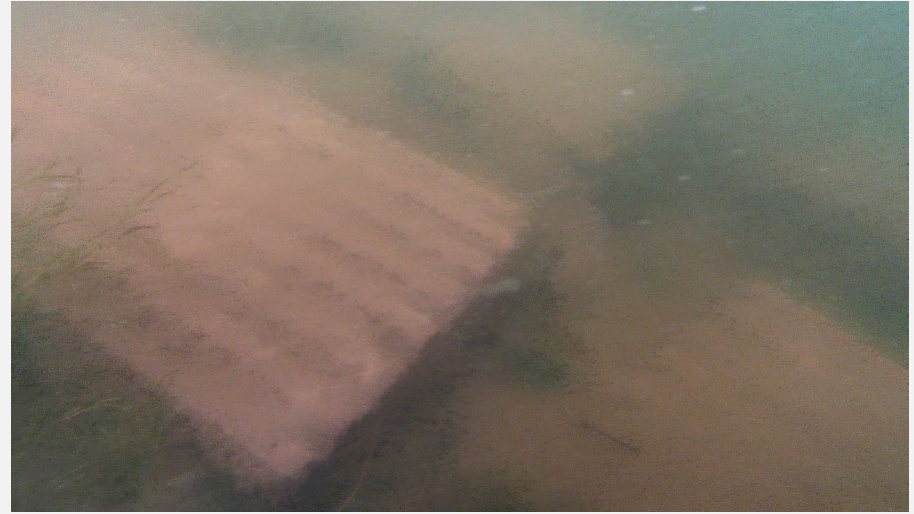
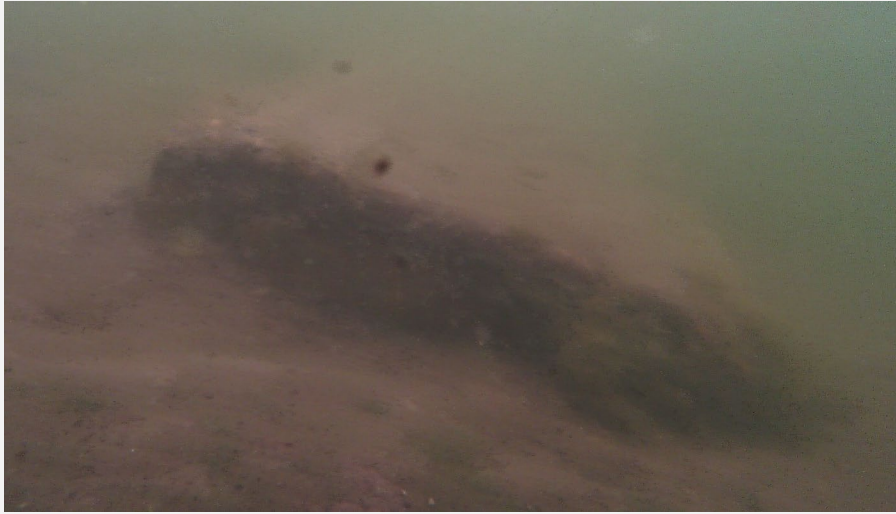


www.parklandcounty.com/parks



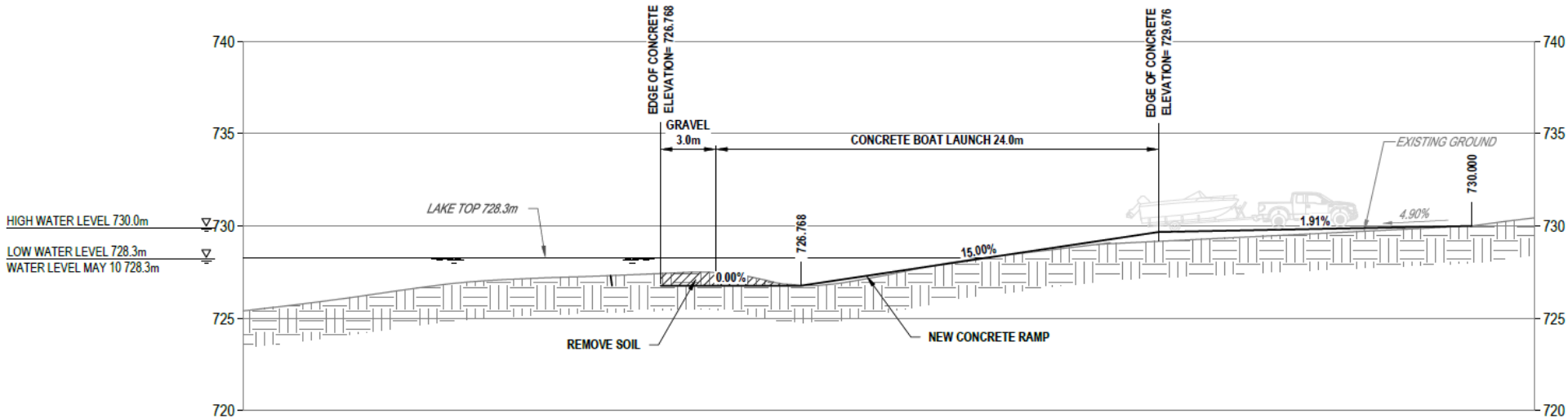
- Lane one is sectioned off to prevent usage, lanes two & three are in poor but useable condition.
- Signage is onsite warning users to proceed with caution if using the ramp.

IMAGES OF CURRENT CONDITION



Underwater drone images of the damaged pads (2023)

PROPOSED NEW DESIGN



B JACKFISH LAKE BOAT LAUNCH - PROPOSED PROFILE
OV02 1:250

- High and Low water levels are historical, the current water level is the new historical low.
- The new ramp will account for the trend of the lowering lake level, extending further into the water, ensuring the longevity of this investment.

QUESTIONS/DISCUSSION