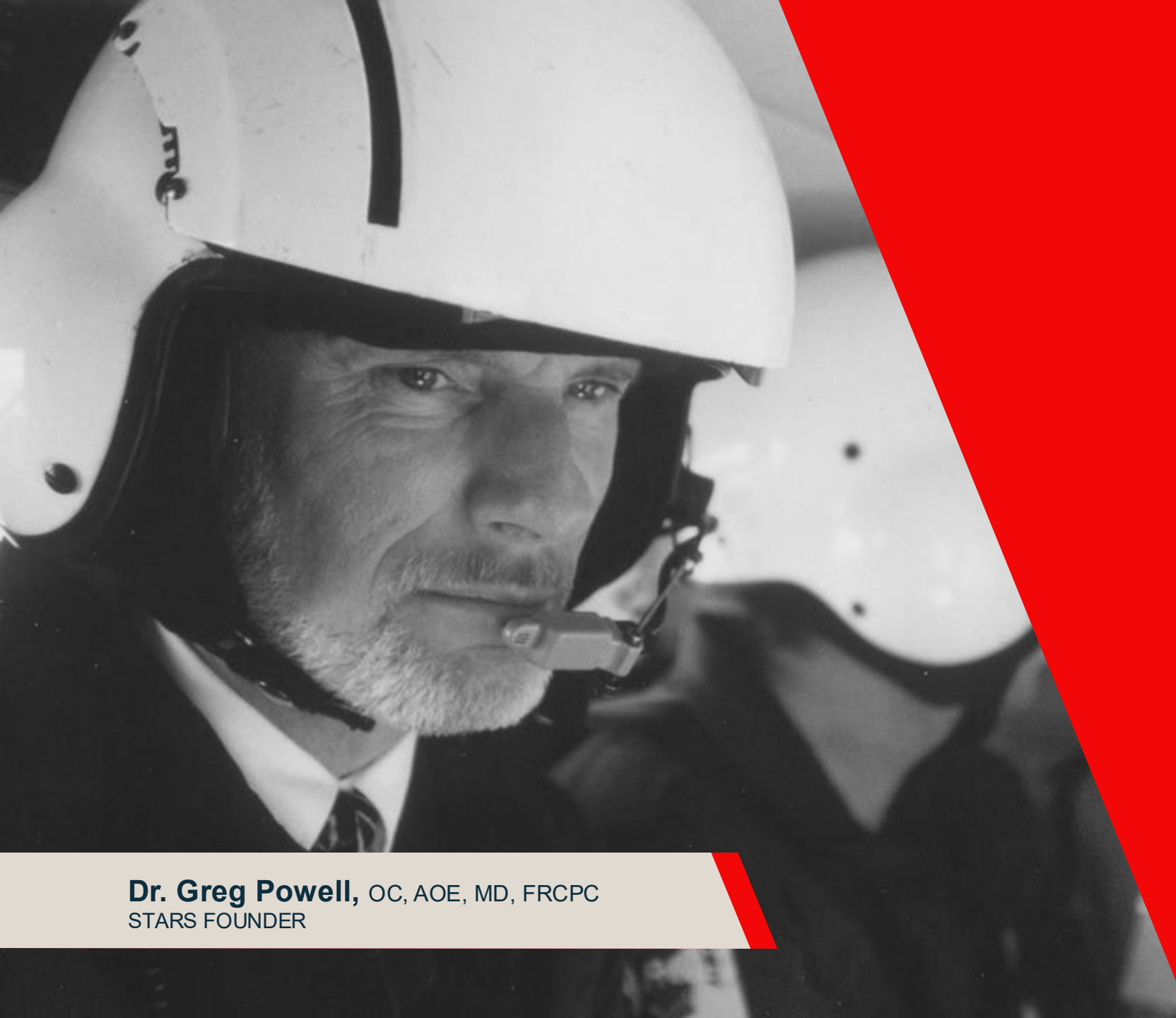




CRITICAL CARE, ANYWHERE
The best hope, in a worst-case scenario.



Critical care, anywhere. Since 1985.

It all began when a pregnant woman from a rural community died from blood loss, leaving a father alone with their newborn. For STARS' founders, her death was one too many. Something had to be done.

As we've grown and evolved, STARS has never wavered from our mission. Fundamentally we believe that where you live — or work, play and travel — shouldn't impact your chance of survival.

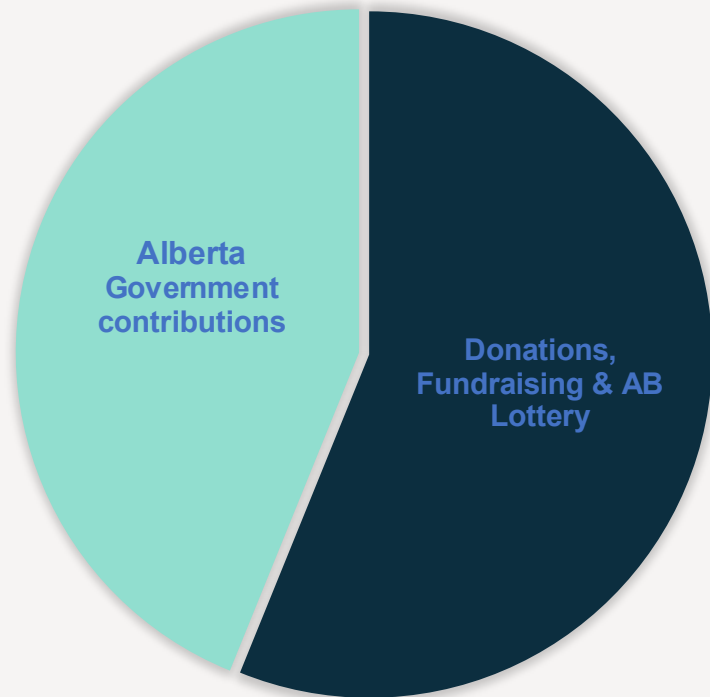
Dr. Greg Powell, OC, AOE, MD, FRCPC
STARS FOUNDER

A portrait of Dr. John Froh, President and CEO, standing in a hospital setting. He is wearing a dark blue suit, a light blue shirt, and a patterned tie. The background is a blurred red and white striped pattern, likely a hospital corridor or emergency room.

**LEADING OUR TEAM
DR. JOHN FROH, President and CEO**



STARS ALBERTA, FY25-26



Direct Operating Costs
\$36.6 million
(\$12.2M per base)

Government Contribution
\$15 million

Donations, Fundraising & Lotteries are needed to cover **59%**
of direct operational costs in Alberta



2026 STARS Lottery Alberta

THE LOTTERY WE ALL WIN.

Early Bird: Feb. 24th

Final deadline: March 20th

Draw: March 31, 2026





- Specialized medical equipment
- Blood on board – Increased to 4 Units
- Massive Hemorrhage Control - severe trauma
- Thrombolytics on board - heart attack/stroke/pulmonary embolism

H145 INTENSIVE CARE UNIT (ICU)



Cardiac 21%



Vehicle Incident 19%



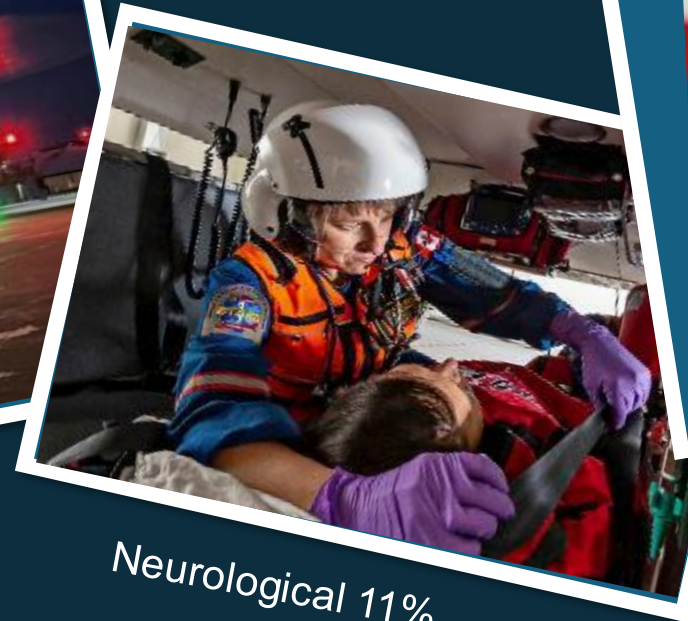
Other Medical Distress 17%



Trauma 17%



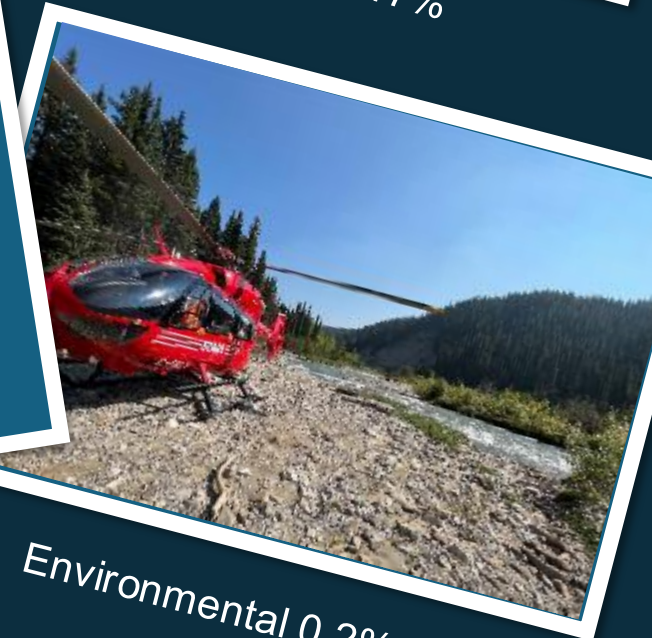
Pulmonary 13%



Neurological 11%



Obstetrical 2%



Environmental 0.2%

MISSION TYPES



STARS[®]

CHAIN OF SURVIVAL PARTNERS

Fire Departments
First Responders
RCMP
Search & Rescue
Ground EMS
Fixed Wing
Hospitals
Medical Professionals

STARS Is Borderless.



© William Vavrek Photog



Night Vision (2003)



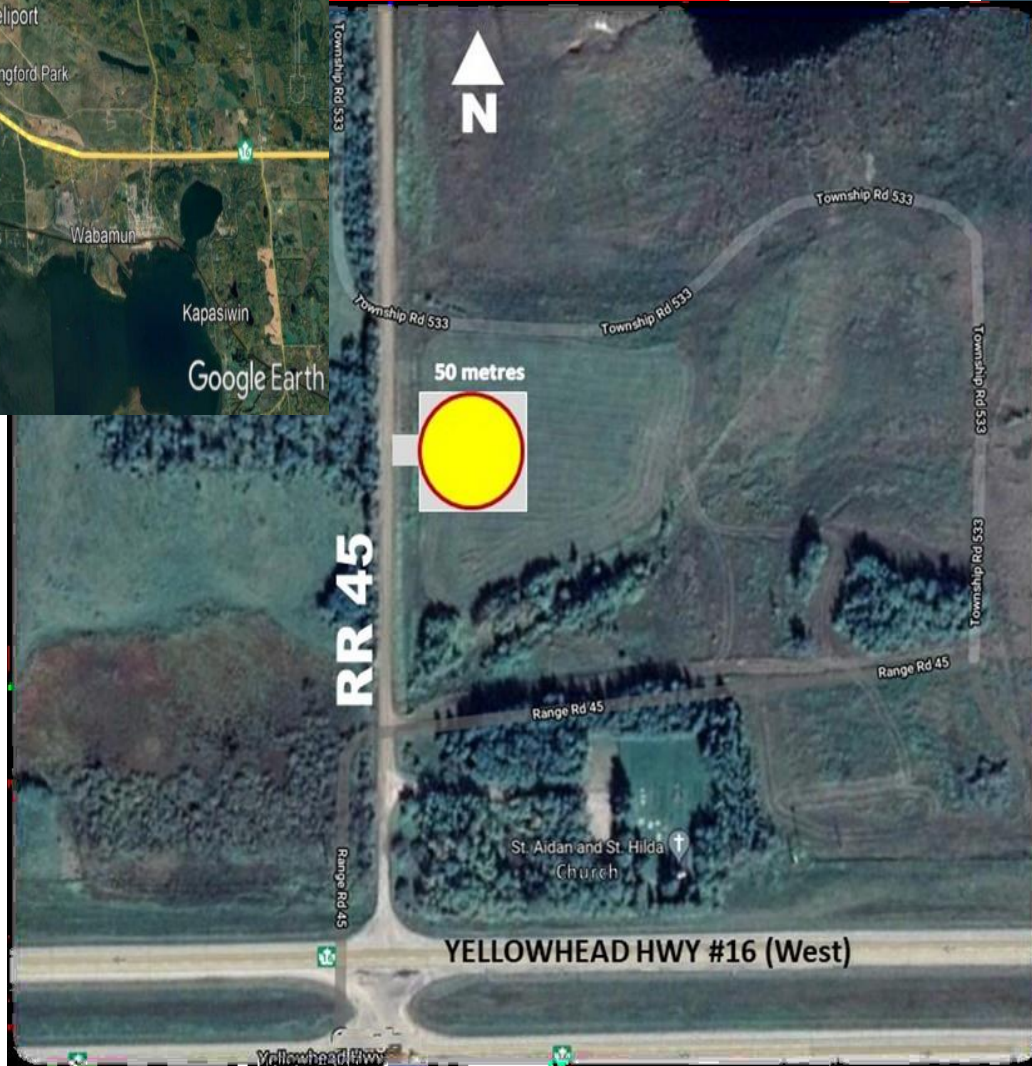
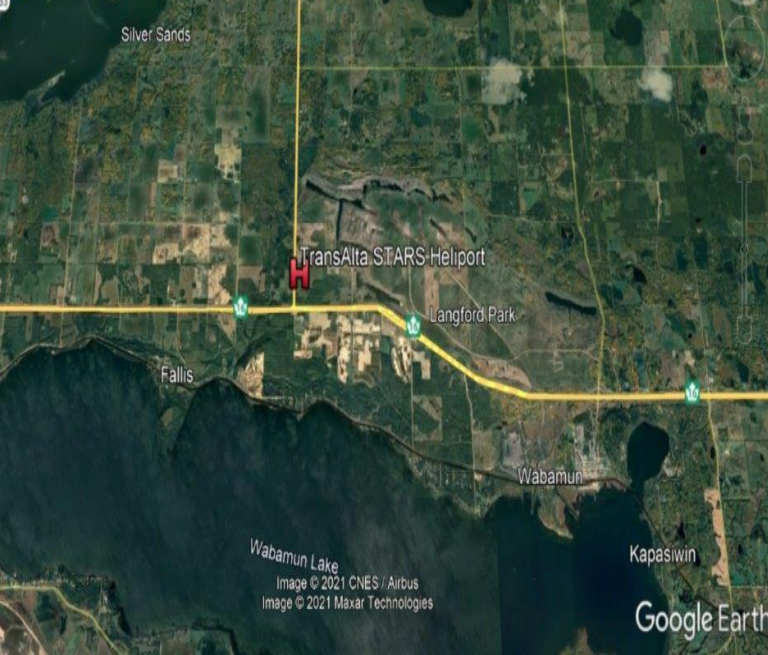
**STARS
TRANSPORT
PHYSICIANS
AVAILABLE 24/7**

**MORE
THAN
RAPID
TRANSPORT**

Virtual Care Consultation



**AMTC International
Simulation
Competition
2025 CHAMPIONS**



TransAlta and Parkland County Rural Heliport (2021)

Located on RR45, north of Highway 16
Near St. Aidan and St. Hilda Church

- Time-critical patients
- West Parkland County
- Further west Yellowhead County
- Dedicated rendezvous point
- No other resources required

PARKLAND COUNTY STARS 16-YEAR MISSION REPORT	2010	2011	2012	2013	2014	2015	2016	2017	2018	2019	2020	2021	2022	2023	2024	2025	TOTAL
NEAR CALAHOO *										1		1					2
NEAR CARVEL	2		1	1			2				4	4	2	1	1	1	19
NEAR DEVON *										1	1		1				3
NEAR DUFFIELD	3	6	3	8	5	4	1			3	2	3	1	4	1	4	48
ENOCH CREE NATION *	3		1		3	1			1			1		2	1	2	15
NEAR ENTWISTLE * + SAR		1	2	2	3		1		2	1	1	3	2	1			19
NEAR FALLIS * + SAR							1			1				2	3		7
NEAR HOREN					1												1
NEAR KAPASWIN		1		1						1	1	2	1	1	3		11
NEAR KEEPHILLS * + SAR	1					1	1		1		2	2	1	1			10
PAULS FIRST NATION *									2	2	2		1	1		1	9
NEAR SEBA BEACH	1		5	3	2		1	4	3	1	2	3		1	1		27
NEAR SPRING LAKE	2				1	1	1		1	1	1	2	2	3		2	17
NEAR SPRUCE GROVE * + SAR	4	6	4	3		5	6	2			1		1	3	1	2	38
NEAR STONY PLAIN * + SAR	17	12	11	7	7	6	13	5	6	3	1	4	4	4	4		104
NEAR THORSBY * + SAR							1			1						1	3
NEAR TOMAHAWK		2		3	3	1	1		1						1	1	13
NEAR WABAMUN	2	4	3	6	1	2	4	5			5	3	5	1		1	42
TOTAL	35	32	30	34	26	21	33	16	17	16	23	28	21	25	16	15	388

41 Critical Inter-facility Transfers (IFTs) from Stony Plain Hospital (2010-2025)

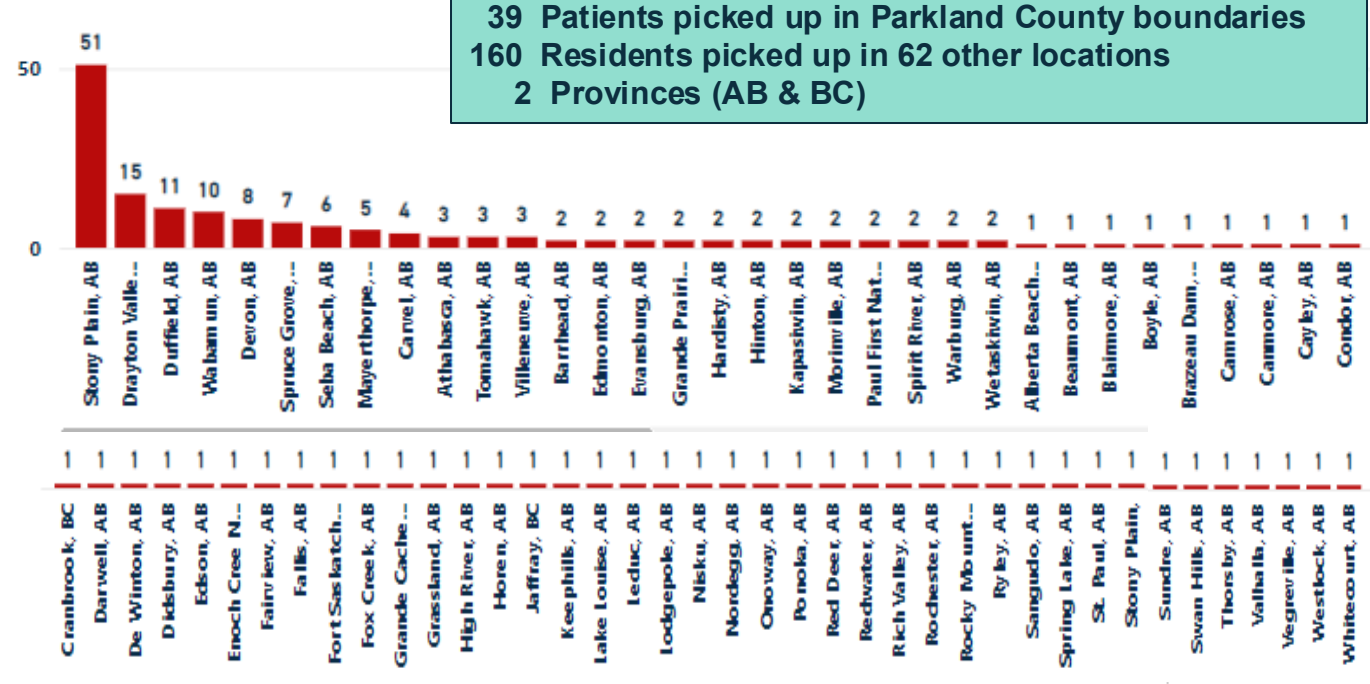
Within Parkland County Boundaries - Patients Flown by STARS (2010-Present)

Locations where Parkland County Residents Travelled and Needed STARS

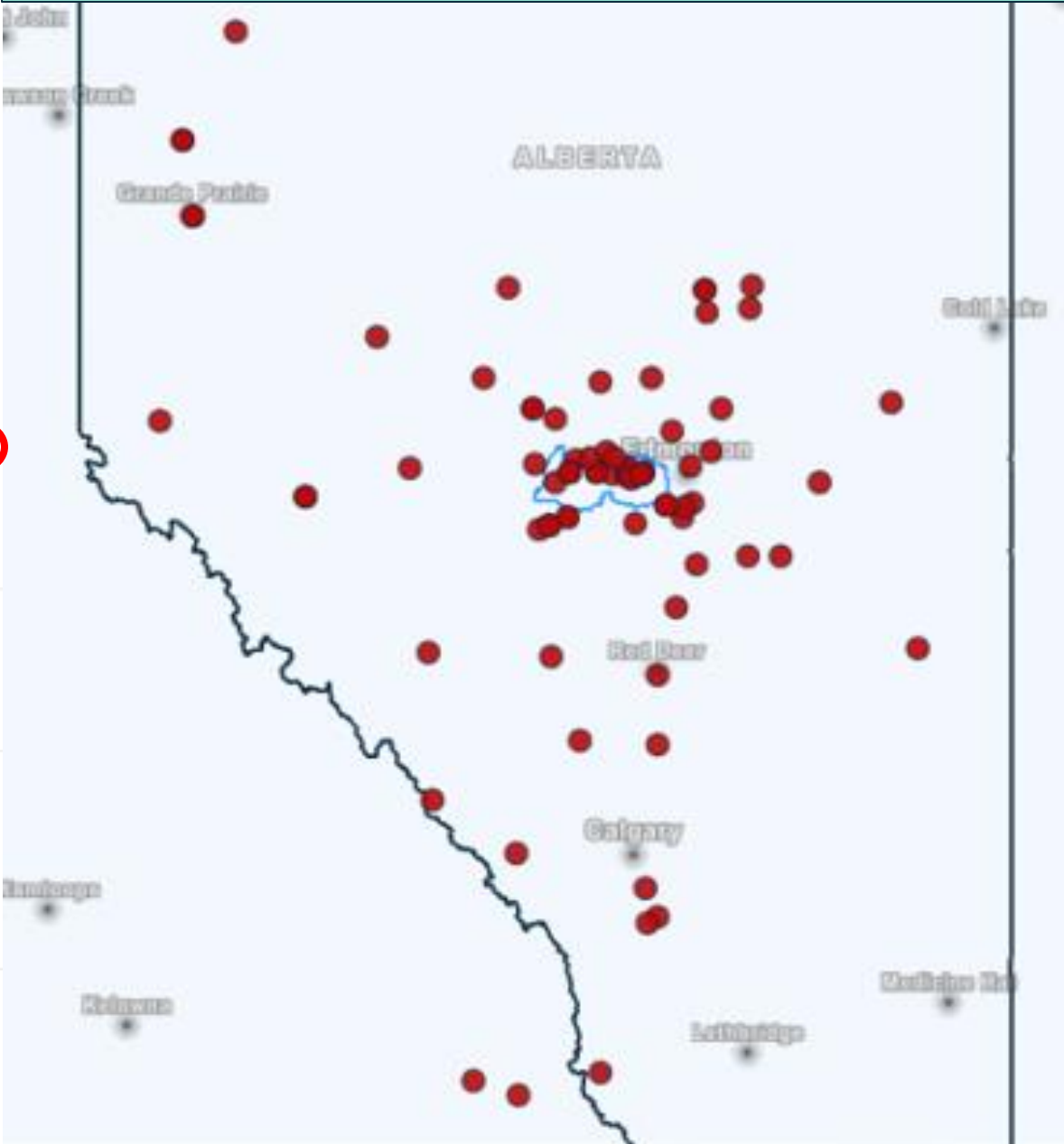
Resident Community	5 Yrs Ago	4 Yrs Ago	3 Yrs Ago	2 Yrs Ago	Last Year	5 Year Total	Total Since 2010
Duffield	2	2	3	0	1	8	28
Entwistle	1	0	0	1	1	3	10
Spruce Grove	4	1	3	4	1	13	67
Stony Plain	4	1	2	0	1	8	56
Wabamun	0	1	0	1	1	3	6
Carvel	0	0	0	0	0	0	10
Fallis	1	0	0	0	0	1	2
Kapasiwin	0	0	0	0	0	0	1
Seba Beach	0	0	0	0	0	0	5
Spring Lake	0	0	0	0	0	0	1
Tomahawk	0	0	0	0	0	0	13
Total	12	5	8	6	5	36	199

* RED dots on map indicate patient pick-up locations in 2 provinces

Count by Pickup Location



199 Total area residents flown
 39 Patients picked up in Parkland County boundaries
 160 Residents picked up in 62 other locations
 2 Provinces (AB & BC)



ESSENTIAL SERVICES FOR ALL, RURAL

- **95% Alberta in Partnership**
- **9 PROVINCIAL LEADERS** (logo on STARS helicopters)
- **Includes Northern B.C.** (7 PRRD Districts)
- **80% Regional Leaders** (\$2(+) per capita)
- **2025 = \$2.4M Municipal Support** (\$21.6M operations must be fundraised)

PROVINCIAL LEADERS

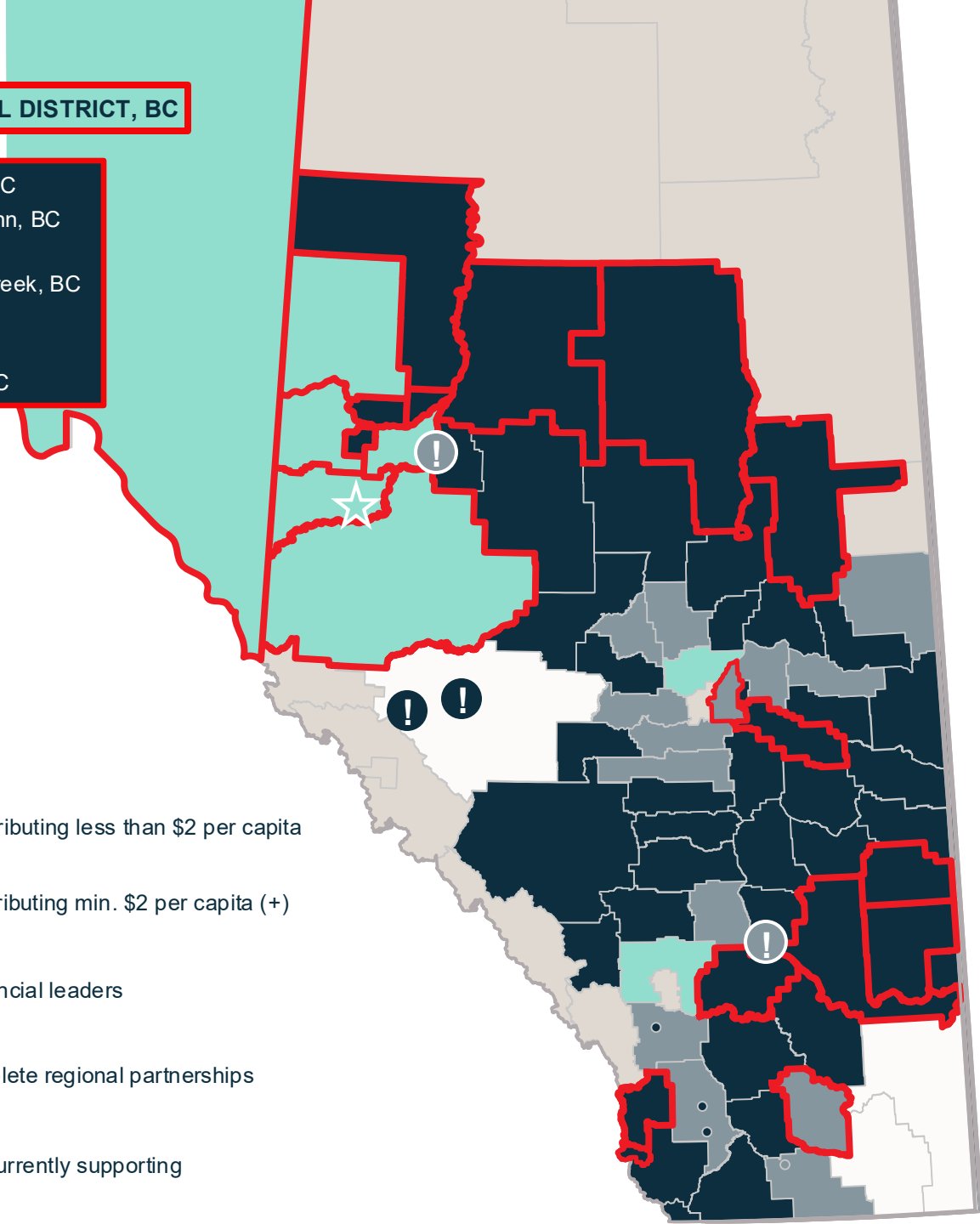
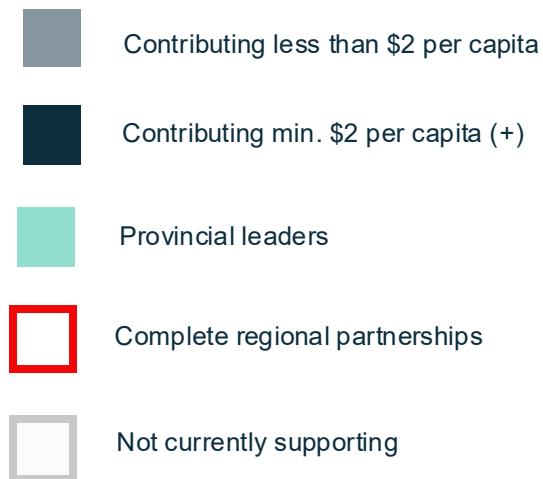
- Fixed Rate (up to \$250K per year)
 - Standing Motion Budget Line-item
- 2026 Welcomes (3) Provincial Leaders

REGIONAL LEADERS

21 Complete Regional Partnerships
(Includes every town & village within boundaries)

PEACE RIVER REGIONAL DISTRICT, BC

- Hudson's Hope, BC
- City of Fort St. John, BC
- Taylor, BC
- City of Dawson Creek, BC
- Pouce Coupe, BC
- Chetwynd, BC
- Tumbler Ridge, BC



**PARKLAND COUNTY
PREVIOUS PLEDGE**

\$25,000 Fixed Rate
Expired 2025
(\$0.77 per capita based on Pop. 32,205)

GRADUATED PROPOSAL

\$41,000 2026

(\$1.27 per capita)

\$48,500 2027

(\$1.50 per capita)

\$57,000 2028

(\$1.75 per capita)

\$65,000 2029

(\$2.00 per capita)

In conjunction with council term.

REGIONAL LEADERS!

CRITICAL CARE, ANYWHERE. STARS®