

WATER AND WASTEWATER MASTER PLAN - COUNTY WIDE *2025-2026*

Governance and Priorities Committee
Presentation May 20, 2025

WHAT IT IS

2025 – 2026 Council Supported Initiative

A non-statutory strategic planning document that will:

- Highlight areas with existing water and wastewater servicing.
- Identify the long-term vision of where Parkland County may or may not provide water and wastewater servicing in the future.
- Detail the strategic directions and actions needed to support both current and future water and wastewater servicing in Parkland County.

Last plans remaining in the infrastructure tetralogy!



WHAT IT ISN'T

The Plan is not intended to address day-to-day operational considerations of Parkland County's water and wastewater systems.

Nor is it:

- A life cycle plan for existing infrastructure
- A technical modelling document
- A prioritized 25-Year Capital Plan
- A utility rate model update

These scope and tasks are already undertaken by Administration, at varying levels, through existing business operations.

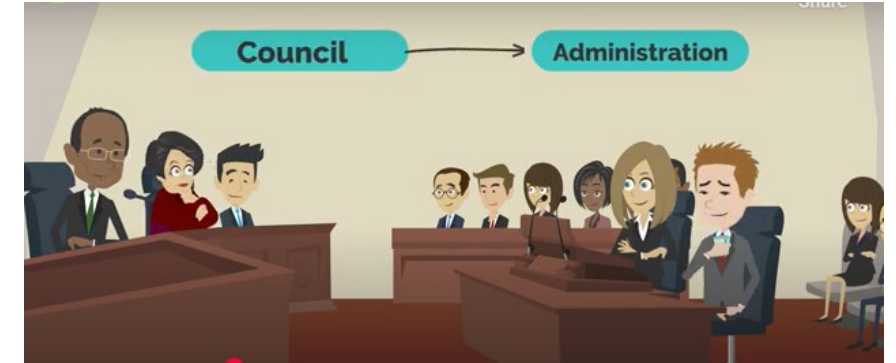
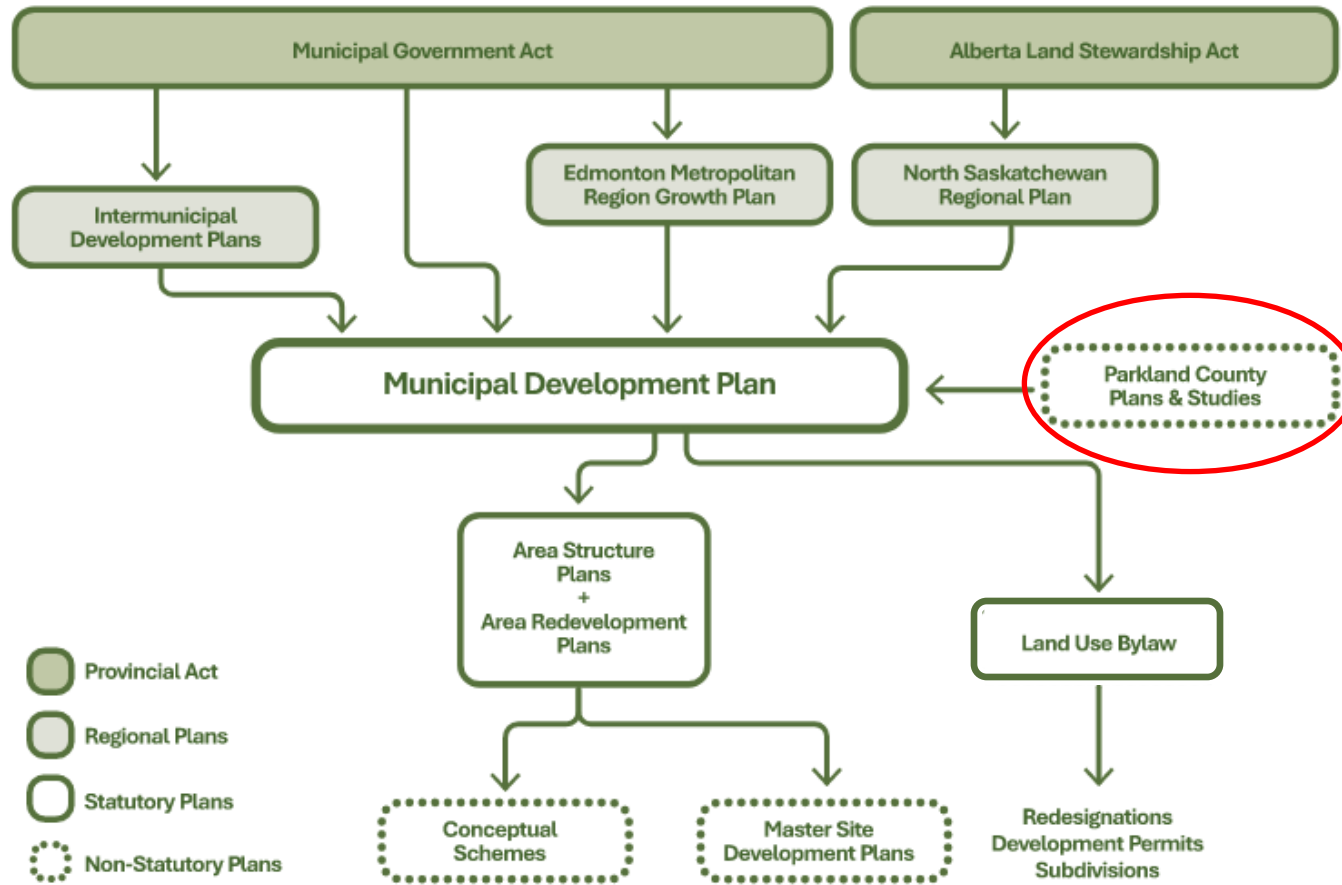
Nonetheless the final Master Plan will inform and influence these activities to ensure strategic alignment.



*Zone 4 Reservoir
2020*



PLAN ALIGNMENT



The Water and Wastewater Master Plan will align with Parkland County's Statutory plans including the newly adopted Municipal Development Plan and the soon to be adopted Land Use Bylaw.

The Water and Wastewater Master Plan will also inform new Area Structure Plans, existing Area Structure Plan revisions and other strategic level investments.



PLAN PROCESS & TIMELINE

The Water and Wastewater Master Plan will be completed through a three phase approach over the next two years.

Q2/Q3 2025

Q3/Q4 2025

Q1/Q2 2026

PHASE 1 – WHERE ARE WE NOW?

Documenting current water and wastewater locations and levels of service, while determining average usage rates for various land uses in Parkland County.

WE ARE
HERE

PHASE 2 – WHERE DO WE WANT TO GO?

Creating common vision on how the County will evolve with growth and where future servicing may or may not be considered.

Review potential connections to:

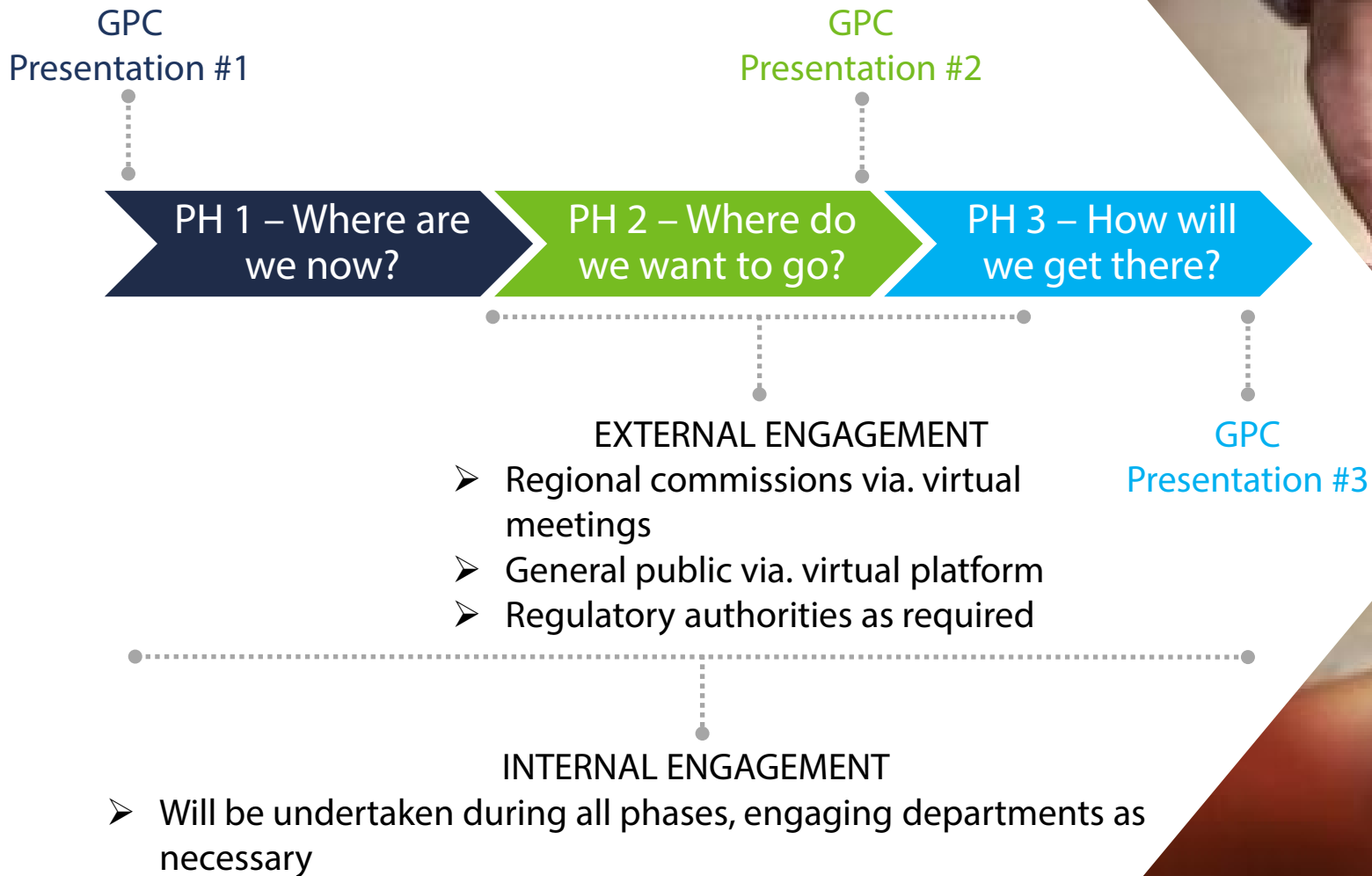
- Regional Systems
- Parkland County Operated Systems
- Privately Operated Systems

PHASE 3 – HOW DO WE GET THERE?

Prioritization of future servicing considering short 2035, medium 2045, or long 2075 term timelines, while outlining the strategic directions and actions required to support current and future servicing.

Forecasting future long term servicing risks such as increasingly stringent regulatory stipulations and environmental requirements.

ENGAGEMENT





*Walker Lake Waterline
2022*

QUESTIONS?