



Q1 2026 Update Operations

Agriculture & Environment Services

April 7, 2026



EPEA Compliance

Ongoing Work



Regular groundwater monitoring- landfills & lagoons



Property Acquisition Process



Management of County Service Yards



Remediation Certificate in Wabamun



Update Spill Response Procedures

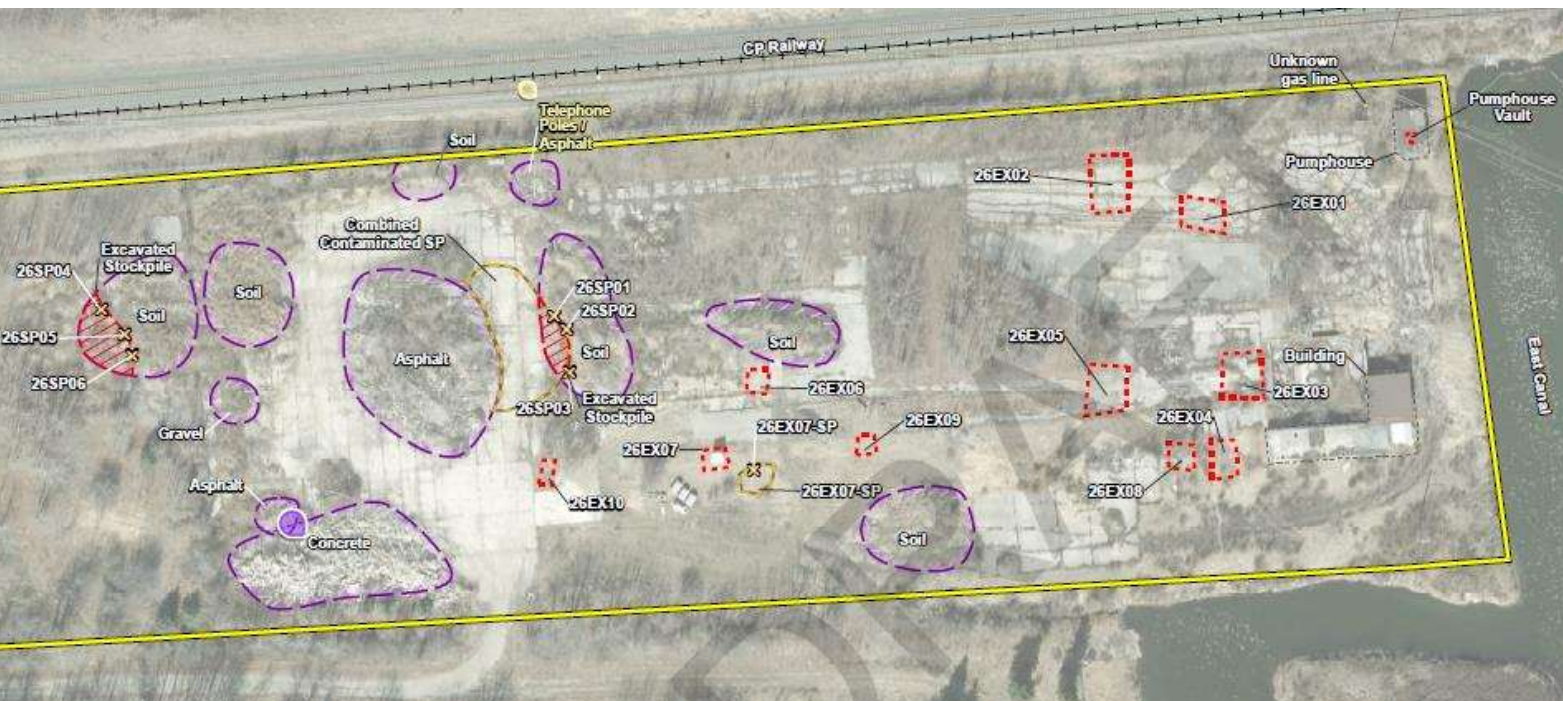


Management of Nuisance Grounds

Wabamun Contaminated Site Remediation Complete

Update:

- Site clean up complete mid March
- 664 tonnes contaminated soils, 1,200 tonnes demolition debris and 24,600 kg of contaminated water removed from site
- Grading completed revegetation and remediation certificate expected this Spring





Climate Change

01

Facilities Energy Management Plan

- 17 Facilities audited, baseline usage assessed
- GHG Reduction Pathways report, 3 solar feasibility studies, Entwistle Hub Climate Hazard Analysis
- 3 building retrofits complete
- \$822,505 funding secured, additional \$1 million in application process
- Major implementation planned for 2026

02

Climate Change Adaptation Plan

- Grant funding approved!
- Draft engagement plan and communications material
- Climate risk and vulnerability assessment 2026
- Action plan development: 2026-2027



Community Beautification & Safety



- Landscaping for County buildings
- Community Beautification
 - Wabamun flowers
 - Entwistle flowers
 - County & Tomahawk Entrance Signs
- Hazardous tree assessments
 - By complaint



Weed Management Programs

Private Property Inspection

- Voluntary compliance vs enforcement
- Education material

3000 inspections



County Land Management

- Lead by example
- Quality control
- Herbicide application & manual removal

68 inquiries



Road-side Mowing

- Shoulder to fence
- 1-2 passes/yr
- Herbicide application value add

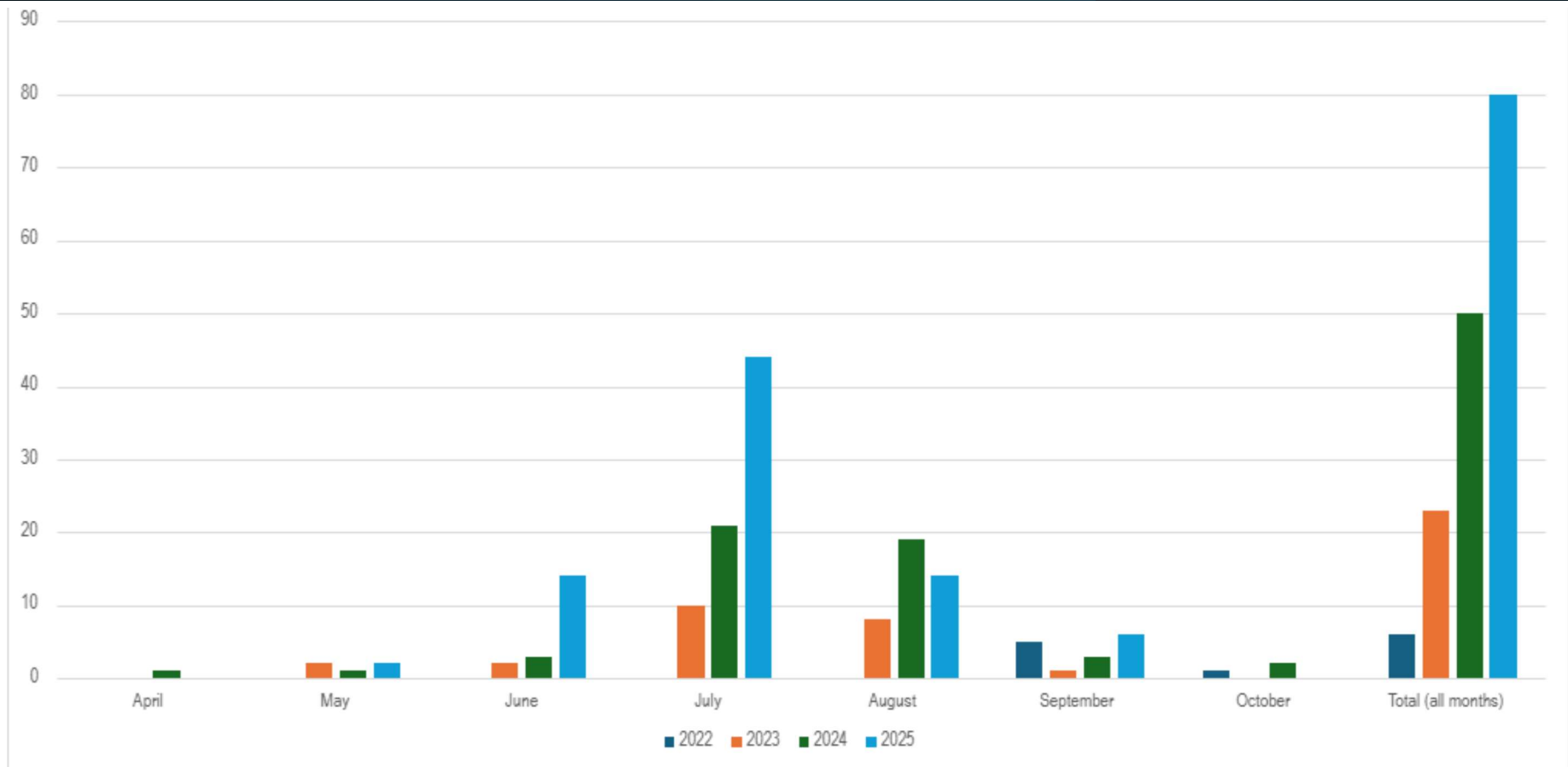
6019km mowed



- **Goal:** Control noxious weeds & destroy prohibited noxious weeds
- Prioritize focus areas
- Also address complaints
- Season May-Sept
- Use Integrated Pest Management approach



Mowing Inquiries by Month





Pest Management Programs

2025 Education/Outreach

- Monthly updates to website news & event pages
- 16 articles/advertisements in YourParkland Newsletter
- Hosted 17 events, supported 4 partner events
- 3 new materials distributed



Economic Benefits of Controlling Weeds in Hay Fields

Controlling your weeds can lead to long-term benefits, including:

<p>Animal Health</p> <ul style="list-style-type: none"> • Weeds like tall buttercup and common tansy are toxic to livestock. • Other weeds can also affect the palatability or nutritional value of hay. 	<p>Field Productivity</p> <ul style="list-style-type: none"> • Weeds outcompete desirable forage species. • This can reduce hay production and the carrying capacity of livestock. 	<p>Hay Value</p> <ul style="list-style-type: none"> • Weed infestations result in forage yield losses. • Invasive plants or seeds can also limit trade opportunities.
---	---	--

Weed control is not only your duty under the Alberta *Weed Control Act*, it is also a form of respect.

<p>Respect the welfare and health of animals that also use the land</p>	<p>Respect the land where our food comes from</p>	<p>Respect your neighbour and their land</p>
---	---	--

For more information, visit parklandcounty.com/weeds

WETLANDS ON YOUR LAND

Are you planning to subdivide or develop your land in the future? It is important to understand that wetlands are protected under the Alberta Wetland Policy and the overarching Water Act.

What is a wetland? The Alberta Wetland Policy defines wetlands as "...land saturated with water long enough to promote wetland or aquatic processes as indicated by poorly drained soils, hydrophytic (water loving) vegetation and various kinds of biological activity that are adapted to the wet environment." It is estimated that Alberta has lost approximately 60 - 70% of the wetlands in settled areas and Parkland County has lost approximately 56% of its wetland area since the 1950s.

Why are they important? Wetlands play an important role in improving water quality and quantity of water supplies, providing critical wildlife habitat, supporting biodiversity, recharging groundwater and reducing the effects of drought and flooding.

How do you know if you have a wetland on your land? If you use the terms slough, swamp, swampy area, muskeg, low area or marsh to describe an area on your land, then you likely have a wetland. Water may not always be present in these areas due to natural fluctuations; however, they are still protected.

How can this impact your subdivision or development plans? Upon review of your application, Parkland County may require the use of setbacks from or avoidance of wetlands. Land dedication or technical studies may also be necessary to protect these environmentally sensitive features.

For more information, please view the Alberta Wetland Policy and the Landowner Guide to the Alberta Wetland Policy, available at www.WetLandsAlberta.ca.

Weed Inspectors

Weed inspectors conduct invasive weed inspections and investigate complaints.

Weed inspectors have the authority to enter private property without a landowner's permission to conduct inspections for prohibited noxious and noxious weeds.

A weed notice may be issued where no effort is made to prevent the spread of noxious weeds or destroy prohibited noxious weeds.

Did you know?

Invasive species can:

1. Reduce property value,
2. Pose health risks for livestock,
3. Reduce crop yields, and,
4. Deteriorate environmental health.

The Alberta Invasive Species Council suggests that invasive species cost Albertans \$2.1 billion annually.

Prevention paired with rapid action can save money and protect the environment.

Contact Us

Feel free to contact us with any questions, concerns, or inquiries about our rental equipment.

Agriculture & Environment Services
4603 - 47 Avenue
Stony Plain, AB
T7Z 2A8

Phone: 780-968-8467
Email: agriculture@parklandcounty.com

Weed Control

Weeding Out Invasive Species in Parkland County

SHARE THE ROAD

parkland county



2026 Field Season Communication Focus

- Connecting with your County campaign
- Proactive weed control messaging
- Roadside mowing program updates
- Climate vulnerabilities & risk engagement
- Addressing natural asset value misinformation
- Wetland construction success



Questions