

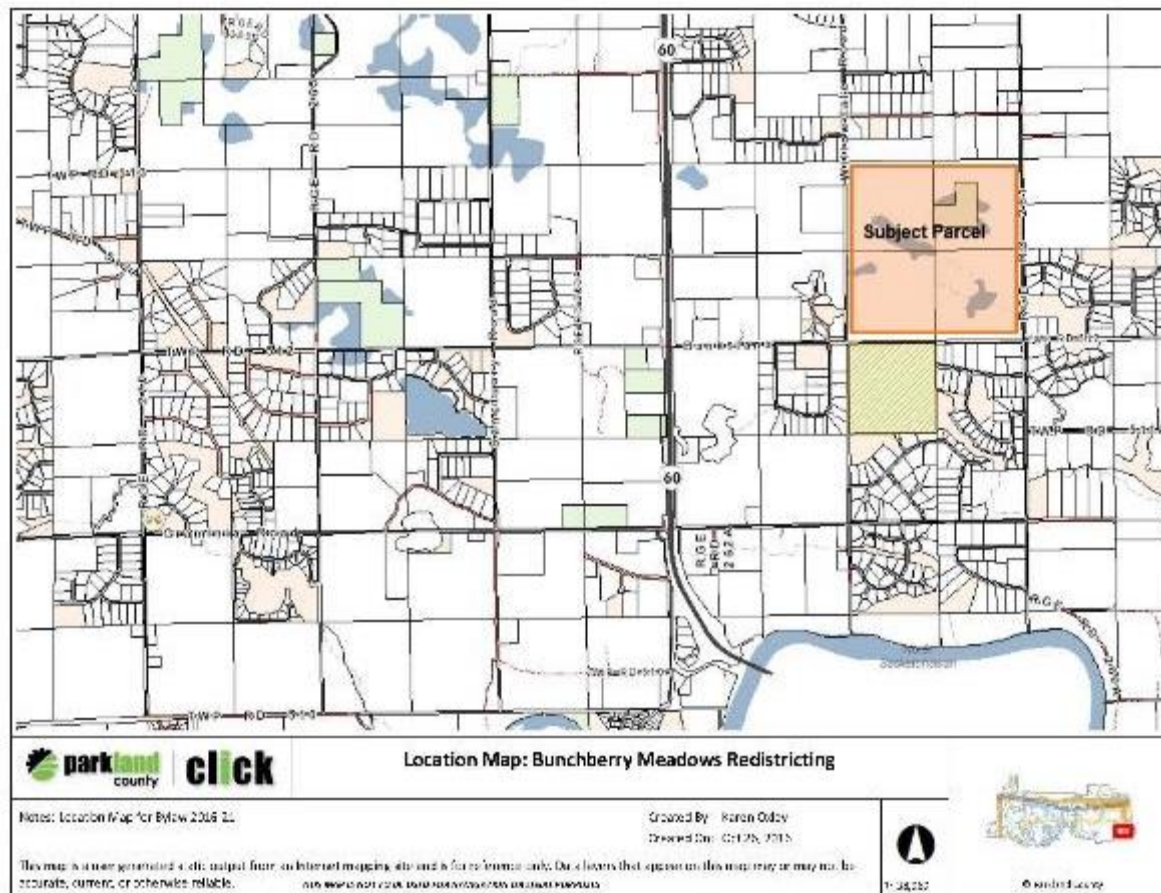


parkland
county

Bylaw 2016-21

**Bunchberry Meadows
Redistricting**

Location



Location:

1 mile east of Hwy 60 at
TWP RD 512

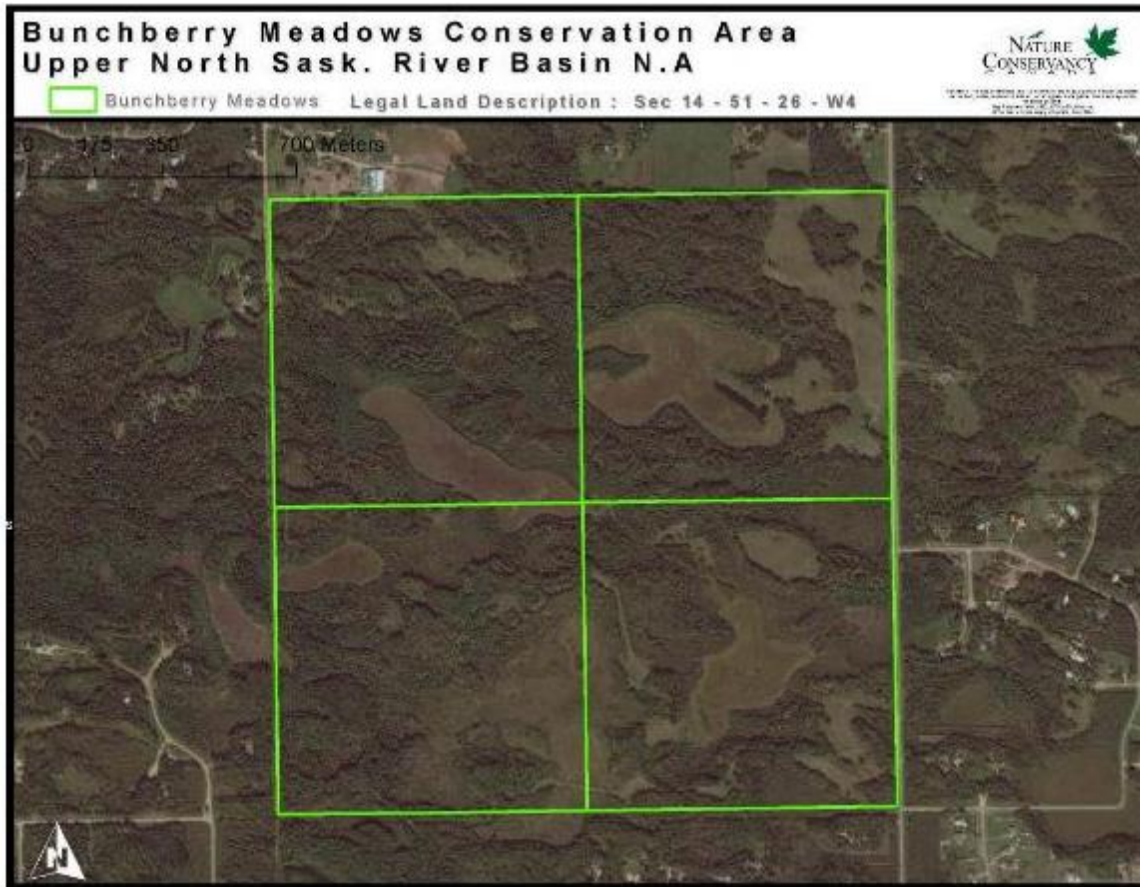
Legal Description:

14-51-26- W4M

Redistricting Area:

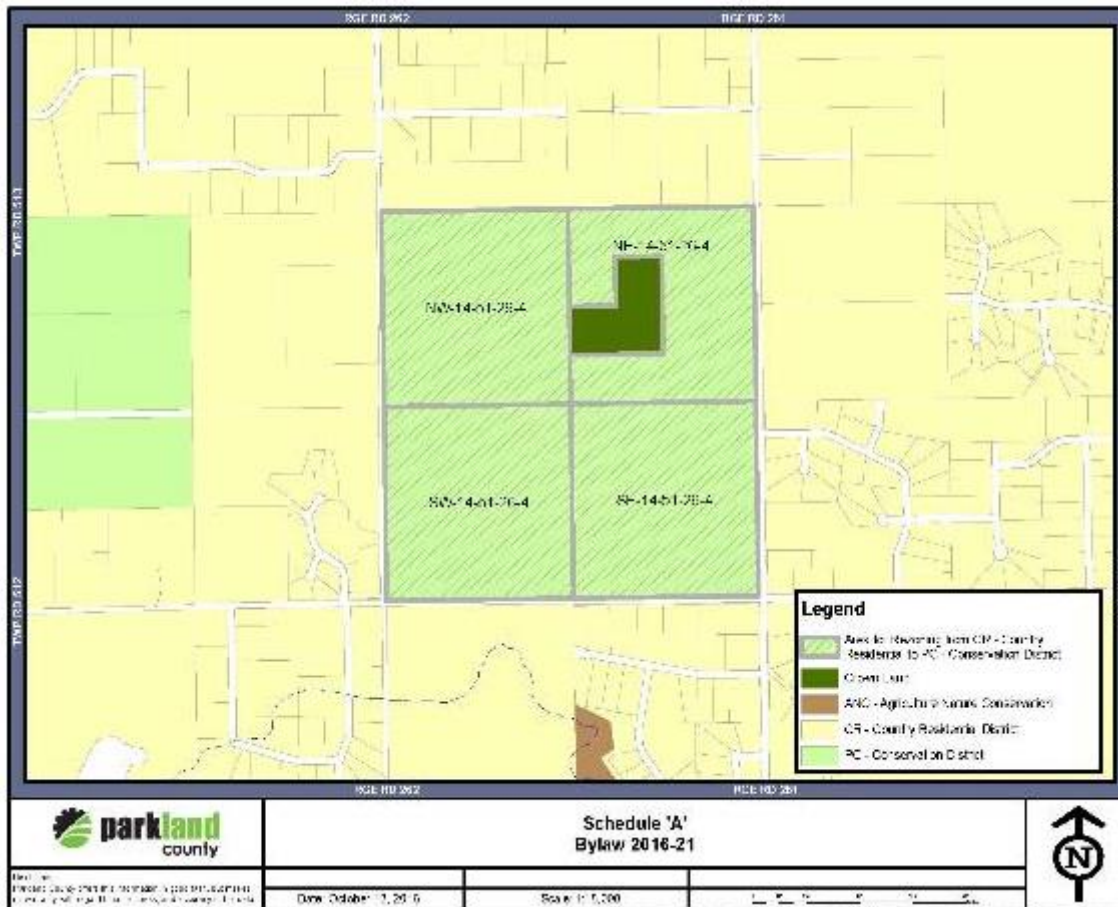
247.22ha (610.92 ac)

Context



The Nature Conservancy of Canada is proposing to provide Bunchberry Meadows for public conservation and recreational area.

Proposed Amendment



To amend Map 10 of
Land Use Bylaw 20-
2009 to redistrict the
subject parcels from:
CR-Country Residential
Land Use District
to:
PC- Conservation Land
Use District

Recommendation

Administration supports this redistricting application and asks Council to approve Second and Third Readings of Bylaw 2016-21.



Questions

