



COMMUNITY SERVICES

2024 FCSS YEAR IN REVIEW

April 1, 2025

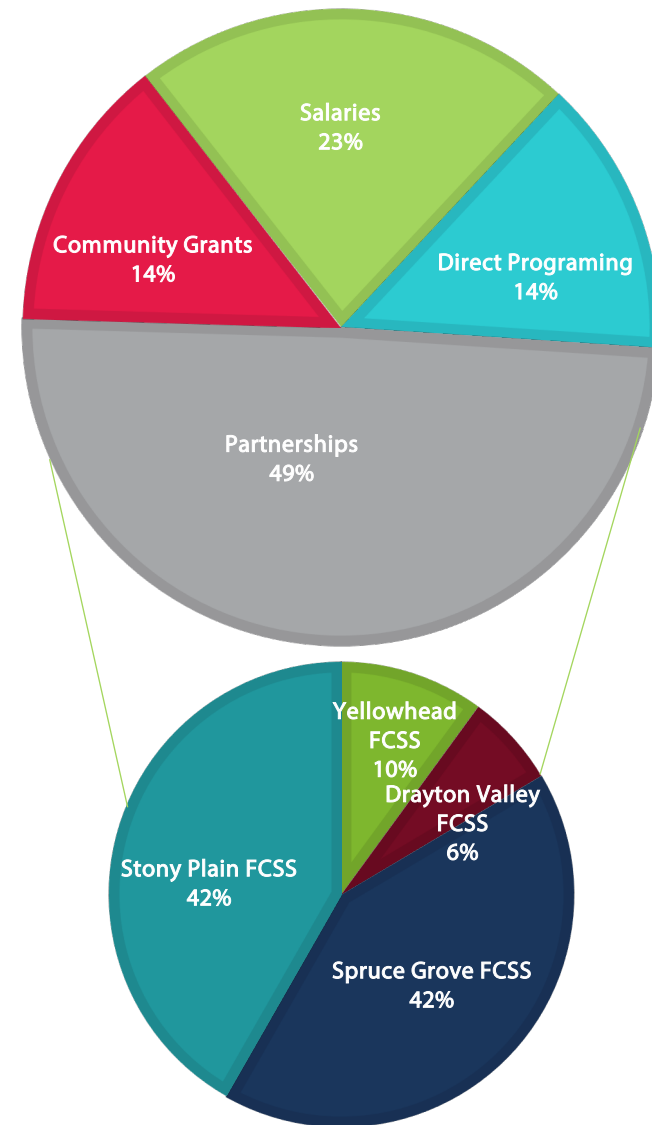
BACKGROUND

- Family and Community Support Services (FCSS) is an 80/20 funding partnership between the Government of Alberta and the municipality
- FCSS receives its mandate from the *Family and Community Support Services Act* and the *Family and Community Support Services Regulation*
- Funds programs and services that support individuals, families and communities through preventative social programs and services. Joint FCSS funding must be used for programs and services that are preventative and do one or more of the following:
 - Help people develop independence, strengthen coping skills and become more resistant to crisis
 - Build awareness of social needs
 - Support people in developing skills to have healthy relationships with others
 - Help individuals and communities assume responsibility for decisions and actions that affect them
 - Provide supports that help people participate in the community

PROGRAMS AND SERVICES

- Direct program delivery
- Indirect program delivery
 - Partnership agreements with
 - ↳ Drayton Valley FCSS
 - ↳ Spruce Grove FCSS
 - ↳ Stony Plain FCSS
 - ↳ Yellowhead County FCSS
 - Community Grants
 - ↳ APFA
 - ↳ Parkland Turning Points Society
 - ↳ WestView Health Centre Foundation
 - ↳ Tri Cala
 - ↳ Change Health
 - ↳ Community Leagues
 - ↳ SAIF Society

2024 FUNDING ALLOCATIONS





PARKLAND COUNTY FCSS
DIRECT DELIVERY

EARLY YEARS, CHILDREN & YOUTH PROGRAMS AND SERVICES

RED CROSS BABYSITTING COURSE

- 6 courses with a total of 83 participants

RED CROSS STAY SAFE PROGRAM

- 3 courses with a total of 25 participants

PARENT & TOT GROUPS

- Two locations

YOUTH NIGHTS

- Operates in Parkland Village for grades 5-8

AFTER SCHOOL PROGRAMS

- Two locations

SUMMER CAMPS

- 261 participants, 25% Parkland County residents

Parent & Tot
Program
and Youth Nights
were attended
by **319** adults
& **553** children in
2024

ADULTS & SENIORS

Community & Volunteer Income Tax Program

- Workshops such as and lunch & learn sessions were offered throughout March

World Elder Abuse Awareness Day

- Tri-Region awareness campaign in Partnership with Parkland County Libraries

Bridging Connections

- Partnership with the City of Spruce Grove to offer access to an onsite Community Social Worker

Snow Removal Subsidy Program

- **55** Residents **accessed** the service

Seniors' Shuttle

- Providing services from West- South & West-East twice weekly

Adult and Seniors Learning Sessions

- Partnership with TriCala
- **185 learners** accessed the program

FAMILIES & COMMUNITY

Community Partnerships

- Missing & Murdered Indigenous People
- Parkland County Libraries Summer Series
- West end Seniors Conference
- Métis Week
- Moose Hide Campaign
- Men's Mental Health Campaign/Drive for Change event
- SeniorsConnect online training
- Suicide Prevention Day
- Poverty Awareness Month
- Family Violence Awareness Month
- International Day for Persons with Disabilities
- Domestic Abuse Regional Collaboration (DARC)
- Tri Region Elder Abuse Coordinated Community Response member

Community Development

- National Volunteer Week
- Community League Weekend including the open-air movie
- Board development
- Community Round Dance
- Wabamun Winter Fest

Neighbourlink Parkland Help Closet

- Support those requiring assistance with food security and basic personal items.

Christmas Supports

- Information & referral

FCSS grants

- 2024 awarded \$124,900.00

Love Where You Live

- 16 block parties supported, reaching 1000 participants

Information & referral services

- 131 inquiries in total. Complex needs requiring wrap around supports.
- Common trends include access to basic necessities, food security, housing stability and income support.
- Utilize highway signage, print ads & social media to share messaging and campaigns.

Yellowhead County FCSS

2024 at a Glance

The Program

- Direct provision of Services = 6.35 FTE
 - FCSS Supervisor
 - Youth Services Coordinator
 - Children's Program Coordinator
 - Community Outreach Coordinator
 - Home Support Workers
 - Summer Youth Workers
 - FCSS Program Assistant
- Provision of Grants and Agreements
 - Special Projects – Intergenerational, Social Seniors, Children and Youth, Community Building
 - Non-Profit Preschool
 - NeighbourLink (similar to block party)
- Collaboration and Awareness Building
 - Monthly Newsletter
 - Special Events and Awareness Building Activities – Family Dances, Movie Nights, Family Violence Prevention Ribbons, etc.
 - Hosting Interagency Meetings
 - Collaboratives with Tri-Region Elder Abuse and Senior Serving Agencies

Some 2024 data

- Total residents served: 1815 people
- Total Parkland County Residents Served: 176*
 - Children and Youth: 61
 - Adults: 62
 - Seniors: 53

Key Trends:

- Increasing Complexity of Issues
- Reduced Resiliency – financial, mental, personal
- Increased Complexity of Systems

2024 data
continued...

Core Activities Impacting Parkland County Residents:

- In-school programming with Entwistle School – Start Strong, Generations Connect and Roots of Empathy.
- Awesome Adventure Summer Day-Camps
- Family Activities – Dances, Movie Nights
- Volunteer Income Tax program.
- Seniors and Adult Workshops and Groups – Seniors Benefits, Scams, Caregiver and Alzheimers/Dementia Support Groups.
- Connection with Entwistle Seniors Club
- Home Support
- Information and referral and supports with forms and paperwork.

Spruce Grove Community Social Development

Programs and Services for Parkland County

**Individual & Family Support Services
Community Strategies**

Individual & Family Support Services

- **Bridging Connections**

- Information, Referral, Navigation – 3200 points of contact
- Services provided in person (walk-in, appointment), virtual, phone, email
 - **Parkland County residents represent approximately 15% of unique contacts**

- **Programs**

- Counselling, Home Support, Regional Housing, Elder Abuse Case Management, Community Volunteer Income Tax, Winter Emergency
 - **25% of counselling = 75+**
 - **Home Support = 155 hours of subsidised support**
 - **\$11,000 Regional Housing supports**
 - **25% of tax returns (166) = \$1.6 million**

Community Strategies

- **Programs, Events, & Activities**

- Over 20 registered initiatives in 2024, up from 2023
 - **Depending on program, between 10-30% of registrants were Parkland County residents**
 - **Delivered a few programs in Entwistle and Wabamun**

- **Regional Initiatives and Partnerships**

- Critical Connections, Tri Region Elder Abuse, Financial Literacy, Not for Profit Conference
- Youth Integrated Services (Kickstand)

Impact for Parkland County

- Above 95% favorable outcomes for all registered programs and support services (positive change, increase skill, more awareness, more able to manage anger)
- Highest need for support – financial, affordable housing, supports for seniors
- Enhanced presence of Bridging Connections in Parkland County, Wabamun identified in 2023 as a need and we responded, and now in 2025 going to Entwistle monthly
- 10% of active unhoused from Parkland County
- Access to all services – walk-in, by appointment, virtual as appropriate
- Intentional and consistent communication and partnership with Parkland County – Youth Integrated Services, Bridging Connections, Elder Abuse

2024

BUILDING A RESILIENT COMMUNITY THROUGH PREVENTION

Direct Services



Belonging

We reduce the effects of social isolation when people feel connected and a sense of belonging.

Building Empathy

We respect one another and thrive on compassion and mutual support for our friends and neighbours.

Access to Supports

We enhance our resilience and reduce our vulnerabilities when we have improved access to supports.

Mental Wellness

Nurturing social connections and improving coping strategies promotes overall mental well-being.

Indirect Services



Connection

We support programs and services that promote and encourage connection among people.

Volunteerism

We build a sense of shared purpose, social cohesion, and collective commitment to local needs through volunteerism.

Mental Health

FCSS funded programs and services support individuals, promote well-being, and reduce stigma.

Community Development



Service Delivery Gaps

FCSS helps to enhance community well-being by supporting collective action to improve access to programs and services offered by other levels of government and organizations in the areas of:

Poverty and Income Inequality

Mental Health and Wellness

Housing and Homelessness

Community Gathering Spaces

stronger together

Direct Services

- Resource Navigation & Referrals
- Home Support
- Community Volunteer Income Tax Program
- Workshops for Seniors
 - (CRA, Service Canada)
 - Coping with Change for Seniors and Beating the Winter Blues
- Skatepark Jam
- Volunteer Appreciation Week
- Community Resource Directory
- Poverty Simulator
- Seniors Appreciation and Information Event
- Canada Day
- Shred-it Truck
- Truth & Reconciliation
- AHS ID Program
- Community Workshops
 - ASIST Training
 - Safe Talk
 - Coping with Wildfire
 - Naloxone training
- Disconnect to Connect

996 Parkland County Residents Served

stronger together

Indirect Services (Grant funded reporting stats for Parkland County)

- Community Parenting Coalition Santa's Workshop
- AIM For Success Pumpkin Walk
- ALIVE 55 Program
- Brighter Futures Healthy Together Program
- Burden Bearers Counselling
- Drayton Valley and Area Food Bank
- Drayton Valley Comprehensive Family Violence
- Drayton Valley Community Learning Association Community Connections
- Drayton Valley Community Learning Association Digital Safety for Seniors
- Drayton Valley Library Summer Reading Club
- WRSD- Family Wellness Program
- Youth Hub – Indigenous Connections
- Pembina Crisis Connection Society

**275 Parkland County Residents
Served**

stronger together

**Town of Stony Plain
2024 Update to
Parkland County Council
April 1, 2025**

Community and Social Development Overview



Community and Social Development portfolios

- Wellness
- Inclusion and Diversity
- Poverty Reduction
- Healthy Relationships
- Youth Engagement
- Volunteerism and Civic Engagement



Community and Social Development supports families and individuals in all life stages through prevention-focused programs, to promote and maintain social wellness for a healthy community.



Personal
Wellbeing

Skill
Development

Outreach &
Awareness

Capacity
Building

Strategic Areas
of Focus

Building Safer Communities

- Outreach
- Wrap around and integration
- Belonging and Connected

Current

- Focus Conversations
- Activities

Goals

- Empowerment
- Voice
- Collaboration



In Development

- Respectful engagement training
- Youth Summit Actions
- Social Enterprise work experience

Evaluation

- Overview
- Developmental Assets



Sense of Belonging

- Value and respect
- Connections and interactions

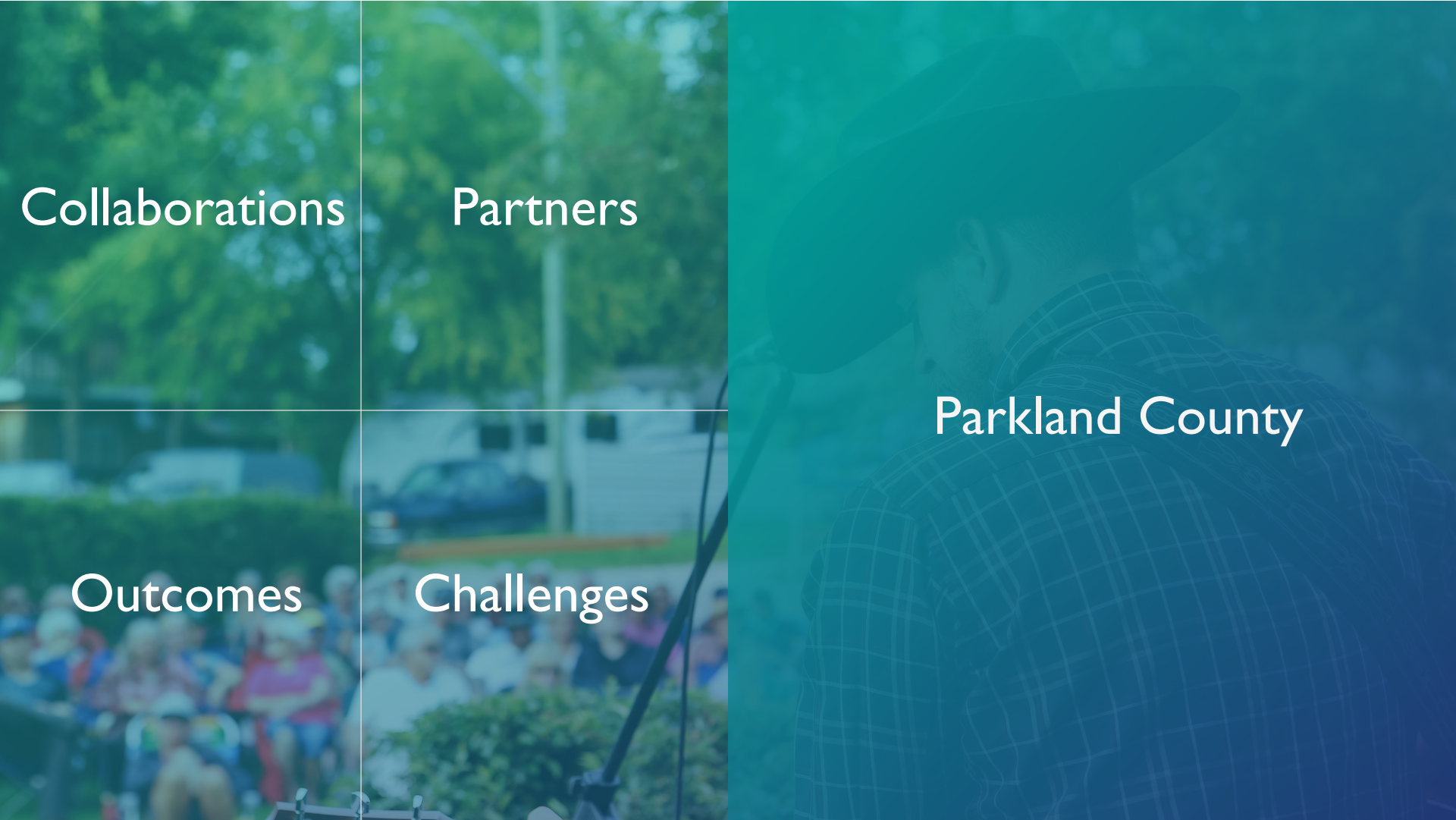
Perspectives

- Challenges
- Leadership

Capacity Building

- Community solutions





Collaborations

Partners

Parkland County

Outcomes

Challenges

2025 FCSS PRIORITIES

- Social development implementation plan
- Continue to work with community partners
- Review agreements with municipal partners



QUESTIONS