



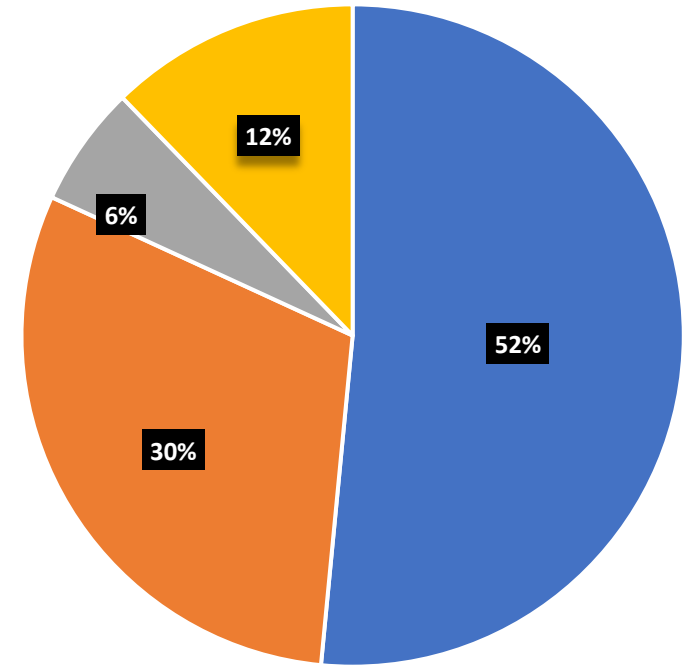
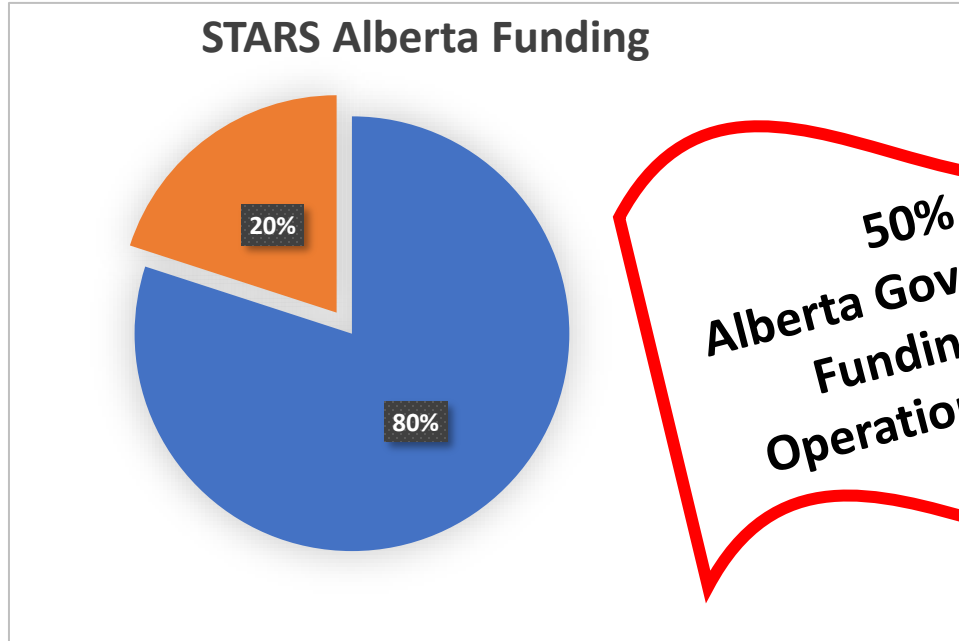
CRITICAL CARE, ANYWHERE.

STARS[®]

FUELED BY GENEROSITY

Achieving successes together

STARS Alberta Expenditures
(3 Bases)



Funding in Thousands

AB Government Funding	\$	7,990
AB Operating expenditures	\$	39,950
AB Government funding as a Percentage of costs		20%
STARS Gross Fundraising	\$	17,310
AB Lottery (net)	\$	12,810
Calendar (net)	\$	417
Site Registration/Emergency contact centre	\$	2,702

- Aviation operations
- Clinical operations
- STARS ELC
- Base operations and administration



MUNICIPAL SUPPORT FOR STARS

- * STARS – Essential Service
- * 90% Alberta Regional Partnerships
 - **New! 4 rural municipalities**
 - **NEW! 4 urban municipalities**
- * Fixed rate or per capita
 - Urban: Up to \$7.50+ per capita
 - Rural: Up to \$90 per capita

United municipal effort ensures health & safety network

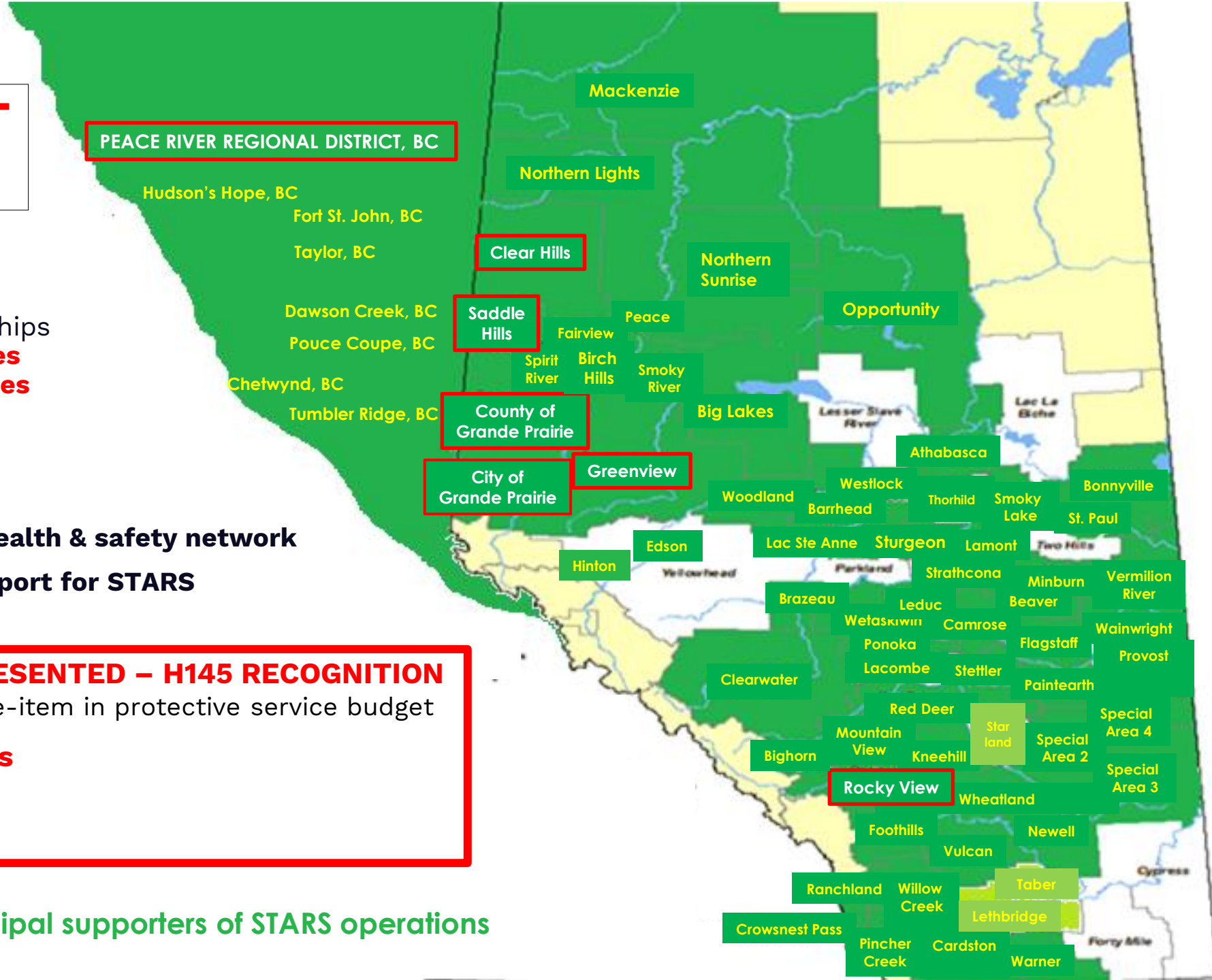
\$2M+ sustainable operational support for STARS

(7) MUNICIPAL LEADERS REPRESENTED – H145 RECOGNITION

Standing Motion / STARS a line-item in protective service budget

NEW! Upcoming Logo Unveilings

- **Sturgeon County**
- **Birch Hills County**

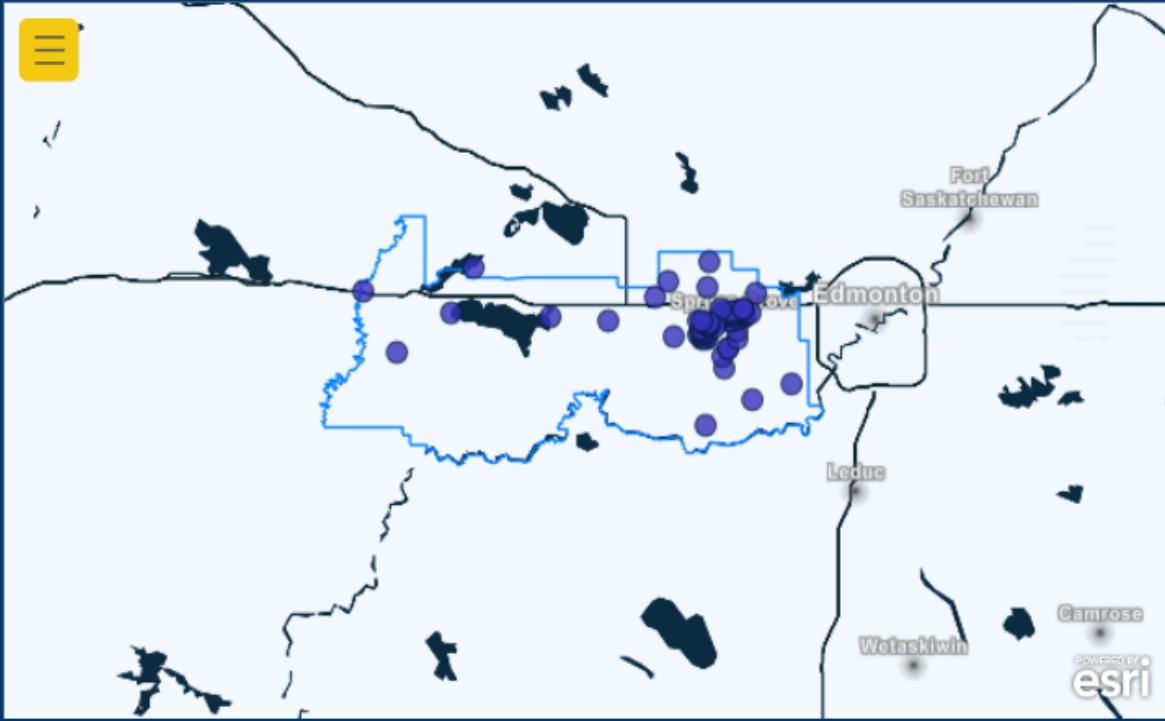


*GREEN represents annual municipal supporters of STARS operations

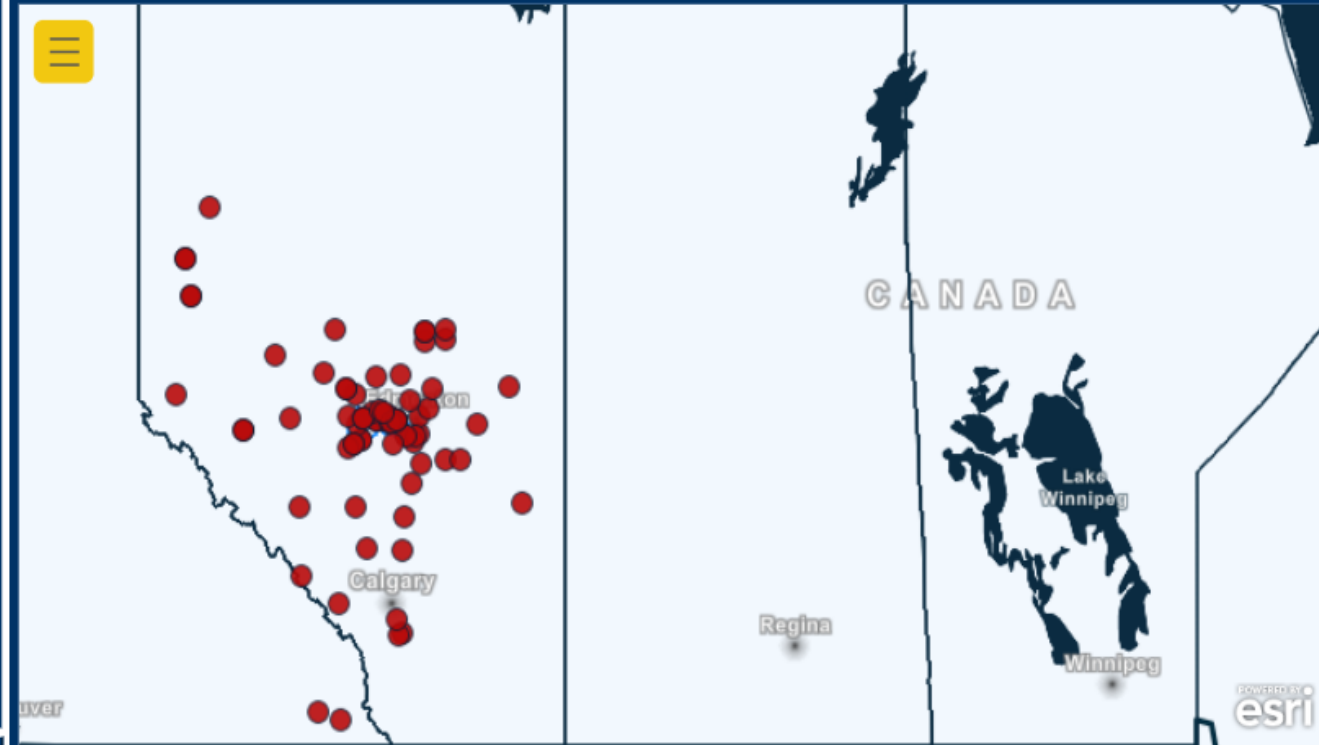
Missions Flown Within Parkland County Boundaries @ February 17, 2023	2018	2019	2020	2021	2022	2023	TOTAL
Near Calahoo (within Parkland County)		1		1			2
Near Carvel			2	4	2		8
Near Devon (within Parkland County)		1	1		1		3
Near Duffield		3	1	3	1		8
Enoch Cree Nation	1			1			2
Near Entwistle	2	1	1	3	2		9
Near Fallis		1				1	2
Near Kapasiwin (within Parkland County)		1	1	2	1		5
Near Keephills	1			2	1		4
Paul FN	2	2	2		1		7
Near Seba Beach (within Parkland County)	3	1	2	3			9
Near Spring Lake (within Parkland County)	1	1	1	2	2		7
Near Spruce Grove (within Parkland County)			1		1		2
Near Stony Plain (within Parkland County)	7	6	1	5	4	2	25
Near Thorsby (within Parkland County)		1					1
Near Tomahawk	1						1
Near Wabamun			4	3	5		12
TOTAL (average 20 missions per year / 100% scene calls)	18	19	17	29	21	3	107

Within Parkland County Boundaries - Patients Flown by STARS (2010-Present)

Parkland County Residents Flown by STARS

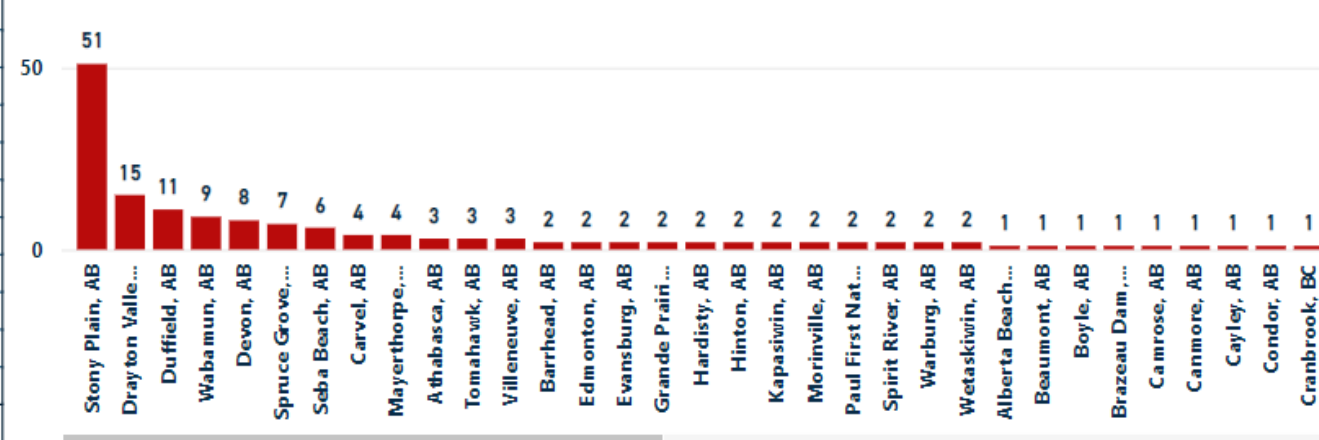


Locations where Parkland County Residents Travelled and Needed STARS

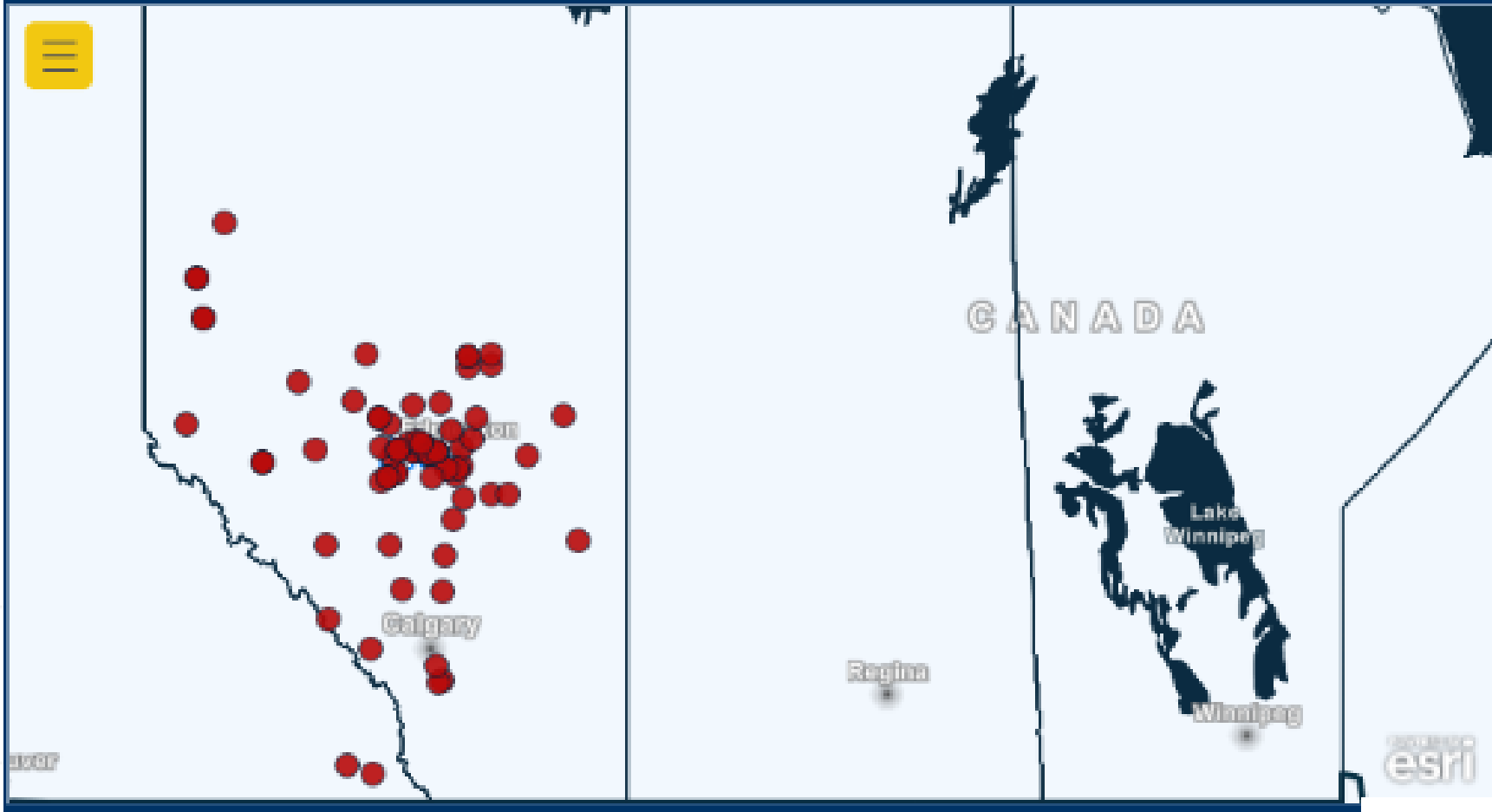


Resident Community	5 Yrs Ago	4 Yrs Ago	3 Yrs Ago	2 Yrs Ago	Last Year	5 Year Total	Total Since 2010
Spruce Grove	2	4	1	3	4	14	66
Entwistle	0	1	0	0	1	2	9
Wabamun	1	0	1	0	1	3	5
Carvel	0	0	0	0	0	0	10
Duffield	1	2	2	3	0	8	27
Fallis	0	1	0	0	0	1	2
Kapasiwin	0	0	0	0	0	0	1
Seba Beach	1	0	0	0	0	1	5
Spring Lake	0	0	0	0	0	0	1
Stony Plain	4	4	1	2	0	11	55
Tomahawk	0	0	0	0	0	0	13
Total	9	12	5	8	6	40	194

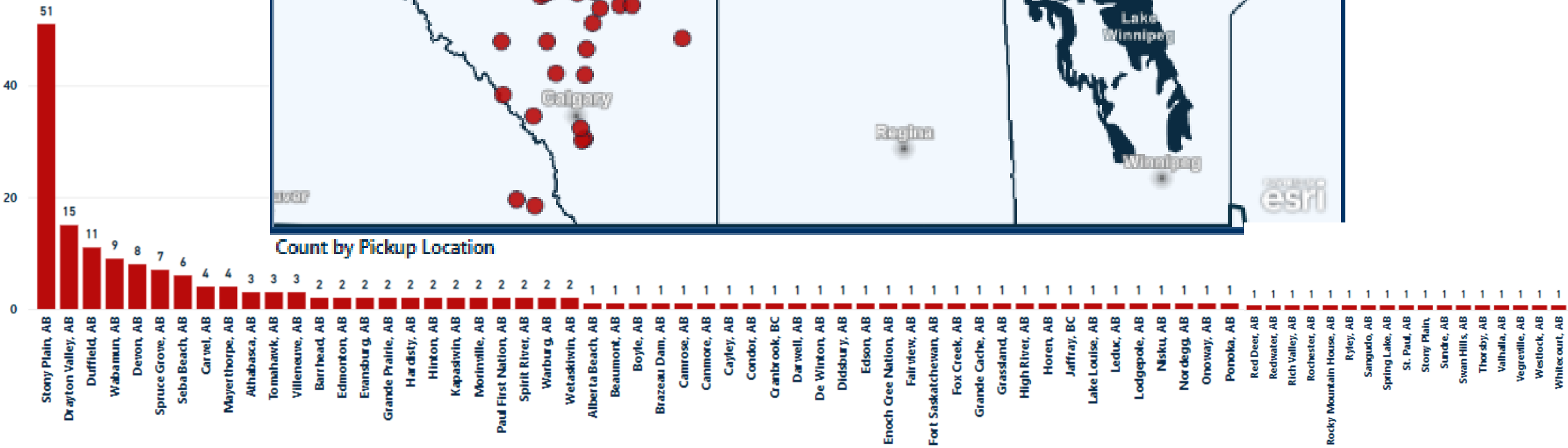
Count by Pickup Location



Locations where Parkland County Residents Travelled and Needed STARS



Count by Pickup Location





- * Outperforms BK117
 - * Speed, range, fuel efficiency
 - * Powerful twin engines
 - * Advanced avionics
 - * Superior safety features
 - * Night Vision Goggles (NVG)
- STARS - 1st Civilian Org. in Canada (2002)

FLEET COMPLETED – (10) AIRBUS H145s



- * 5-bladed system
- * Increased lift/load capacity
- * Less maintenance
- * Increased availability
- * Reduced cost

GENERATIONAL INVESTMENT

EMERGENCY LINK CENTRE (ELC)
Over 36,000 emergency requests/year

Avg. 99 emergency requests received per day



H145 Intensive Care Unit (ICU)

Cutting-edge diagnostics

- * **Bluetooth / Wi-fi / Satellite**
- * **Transmit Test Results**
 - Expedite treatment plans
- * **Universal Blood Onboard**
 - Difference between life & death
- * **Transport Physician Oversight**
 - All critical calls
 - Any mode of transport





1ST PLACE
2022 AMTC
SIM COMPETITION

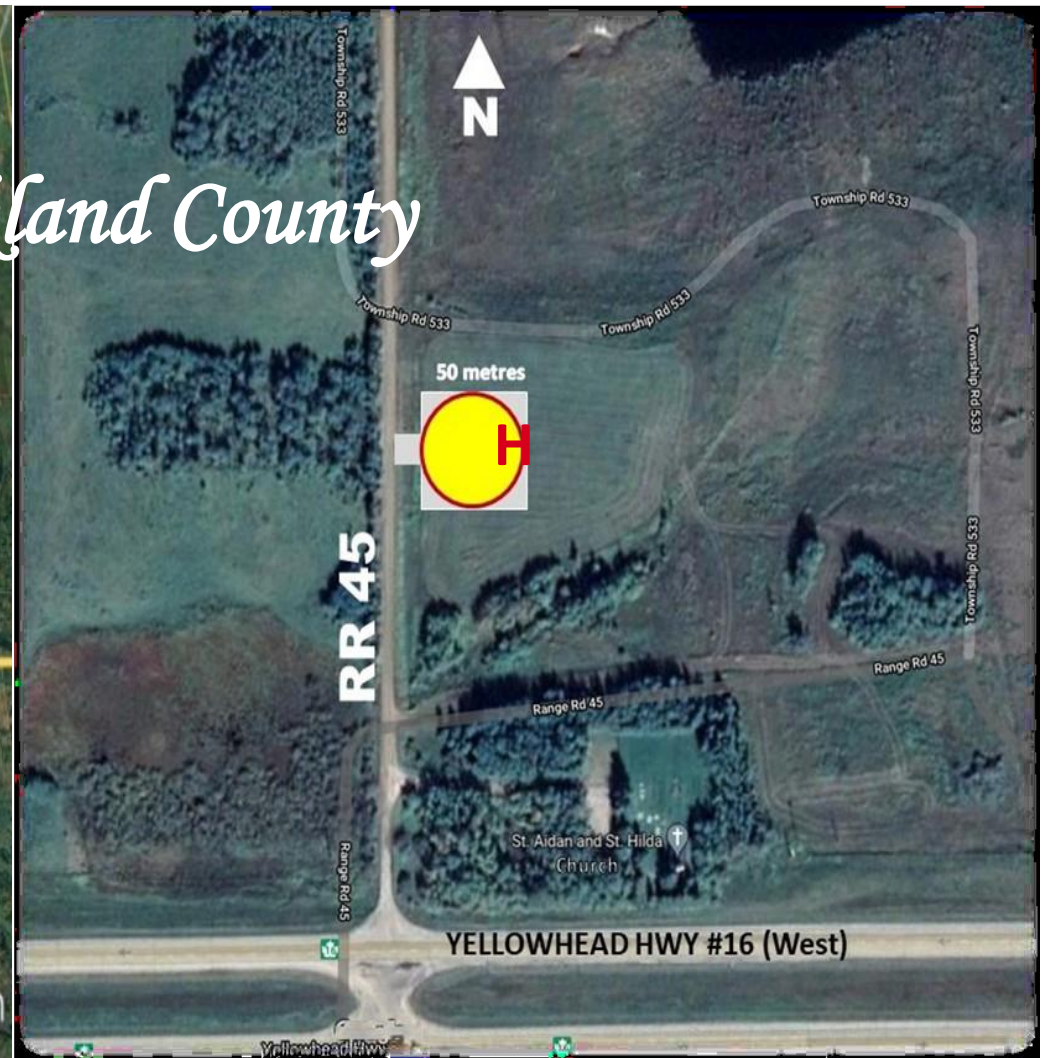


2022 AMTC CHAMPIONS! Kevin Easton and Chris Fay





Thank you, Parkland County



Located on RR45, north of Highway #16, near St. Aidan and St. Hilda Church at Langford Park.

TransAlta HELIPORT LOCATED WITHIN PARKLAND COUNTY

WE ARE ALL STARS®

PARKLAND COUNTY

Our Request

\$2 per capita

2023, 2024, 2025

(in conjunction with council term)



A life is saved every day. Partnership makes it possible.

