

WATERSHED PLANNING AND STEWARDSHIP

PARKLAND COUNTY COUNCIL MEETING

JANUARY 13TH, 2026

WATERSHEDS

“Water does not
come *from* the
river.

It comes *to* the
river” - Kevin Van Tighem

Watershed- an area of *land* where all
the water that drains off of it goes to the
same place.



GEOGRAPHIC WATERSHED AREAS

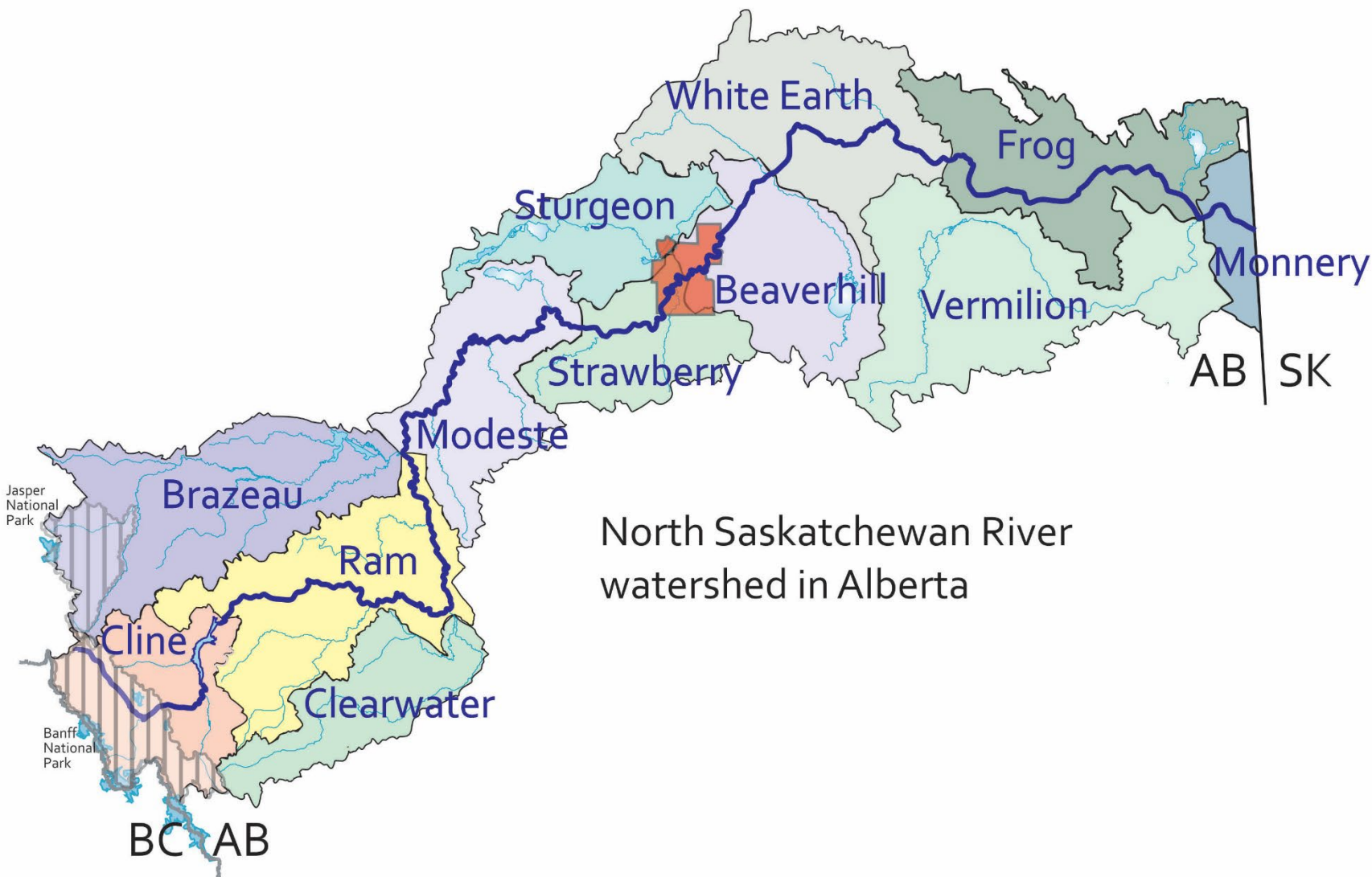
- In Alberta major watersheds follow major river basins



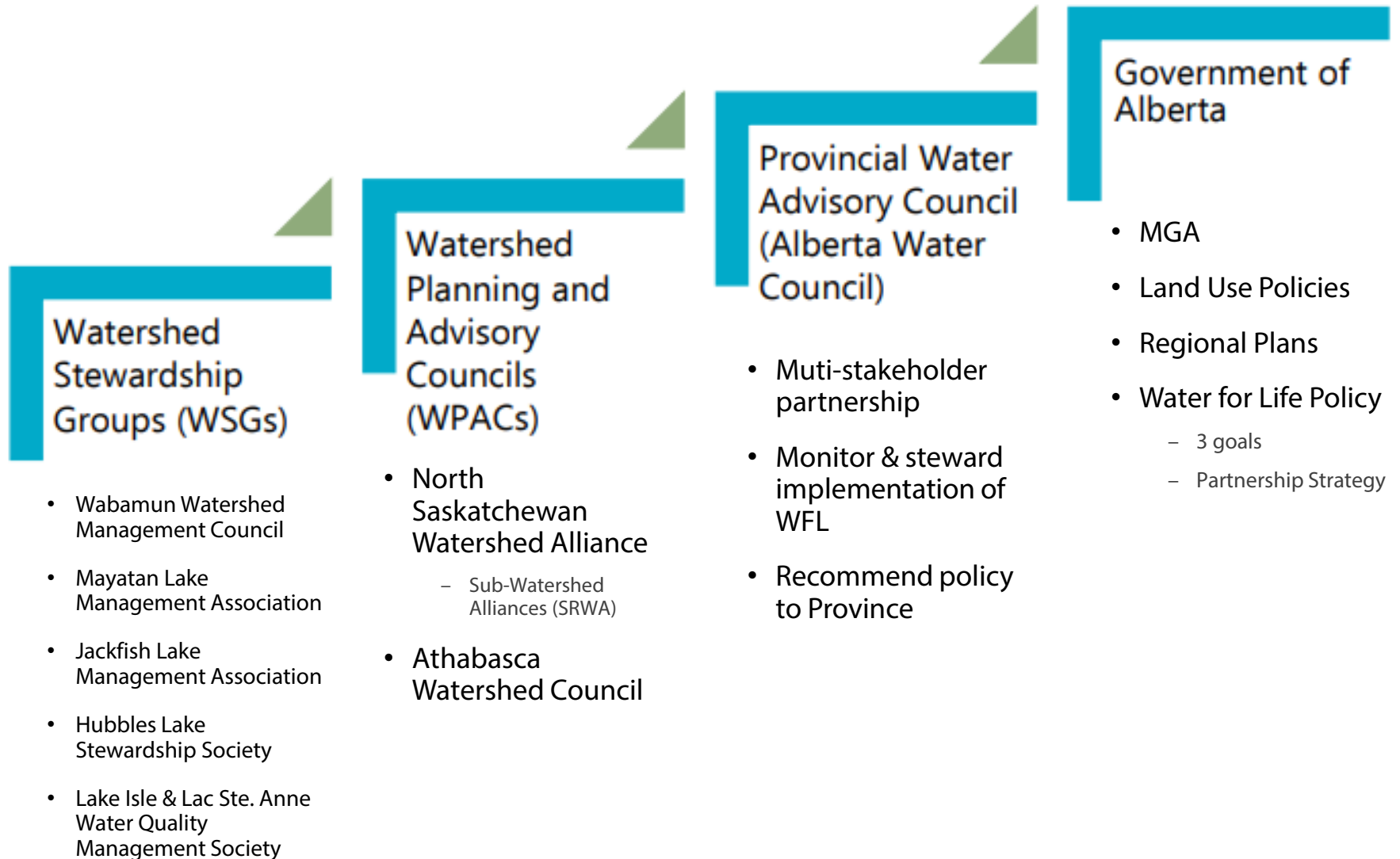
SUB-WATERSHEDS

Think of watersheds as the same as nesting dolls...





WATERSHED PLANNING & LEGISLATION HIERARCHY



REGULATION VS VOLUNTARY INVOLVEMENT

- Current Provincial Strategy directs “partnership strategy” to meeting Provincial policy
 - Voluntary participation to meet Council/resident needs
 - Allows municipalities to direct implementation of provincial policy so it makes sense locally *best case scenario*
 - Sets up WPACs to provide capacity & support for requirements like regional planning *limit downloading*
- Alternative would be increased legislation *more red tape*
 - Mandatory participation with deadlines and directed TOR
 - Impacts to farmers & businesses *increased cost of doing business*
 - Impacts to County admin *increased cost of operations/capital*
 - ↳ Enforcement
 - ↳ Planning & Development
 - ↳ Engineering

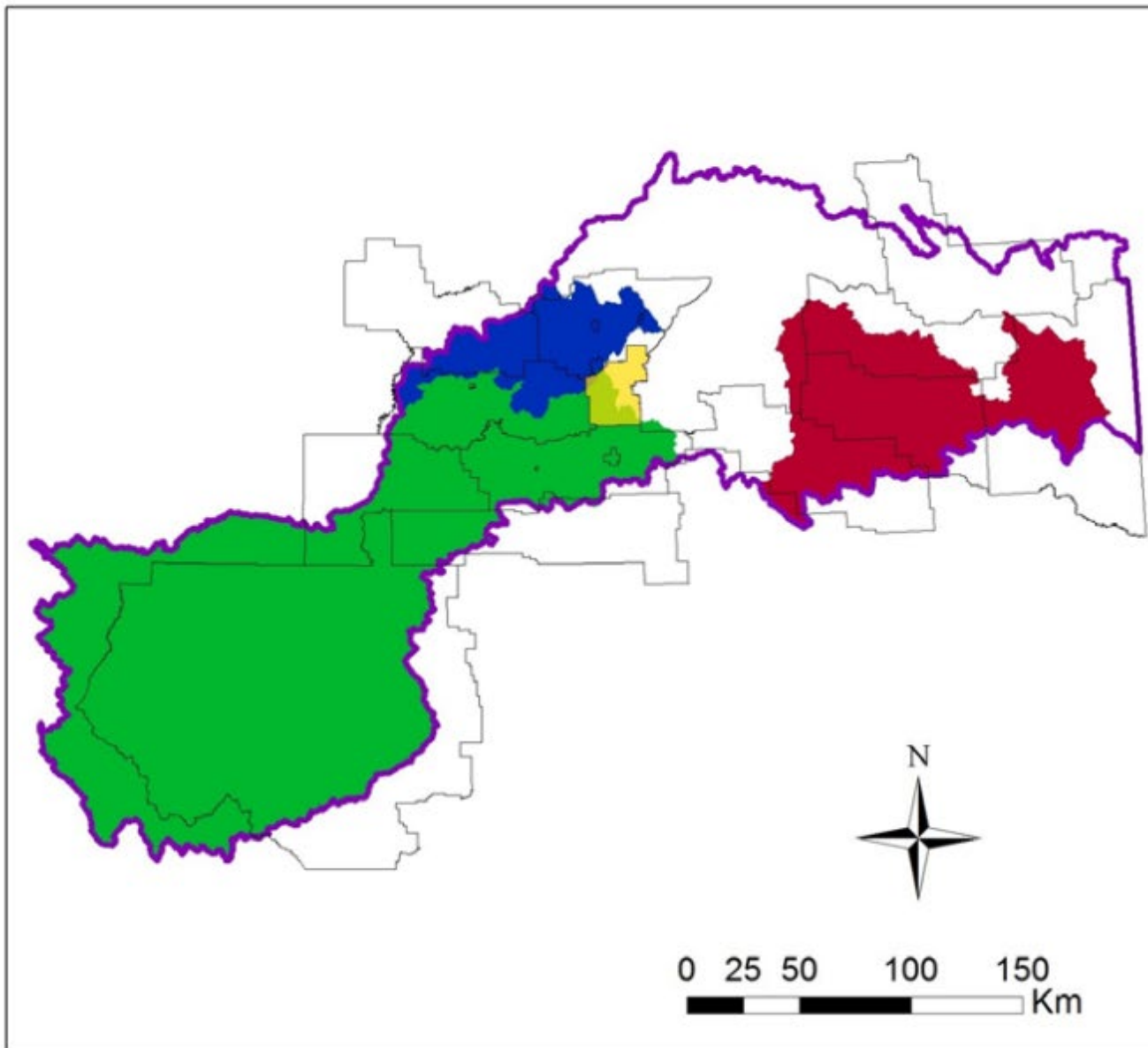
NSWA PURPOSE

“Working together for a healthy and resilient watershed”

- A not-for-profit organization that collaborates with a diverse range of stakeholders to find practical solutions to watershed issues.



NORTH SASKATCHEWAN RIVER WATERSHED



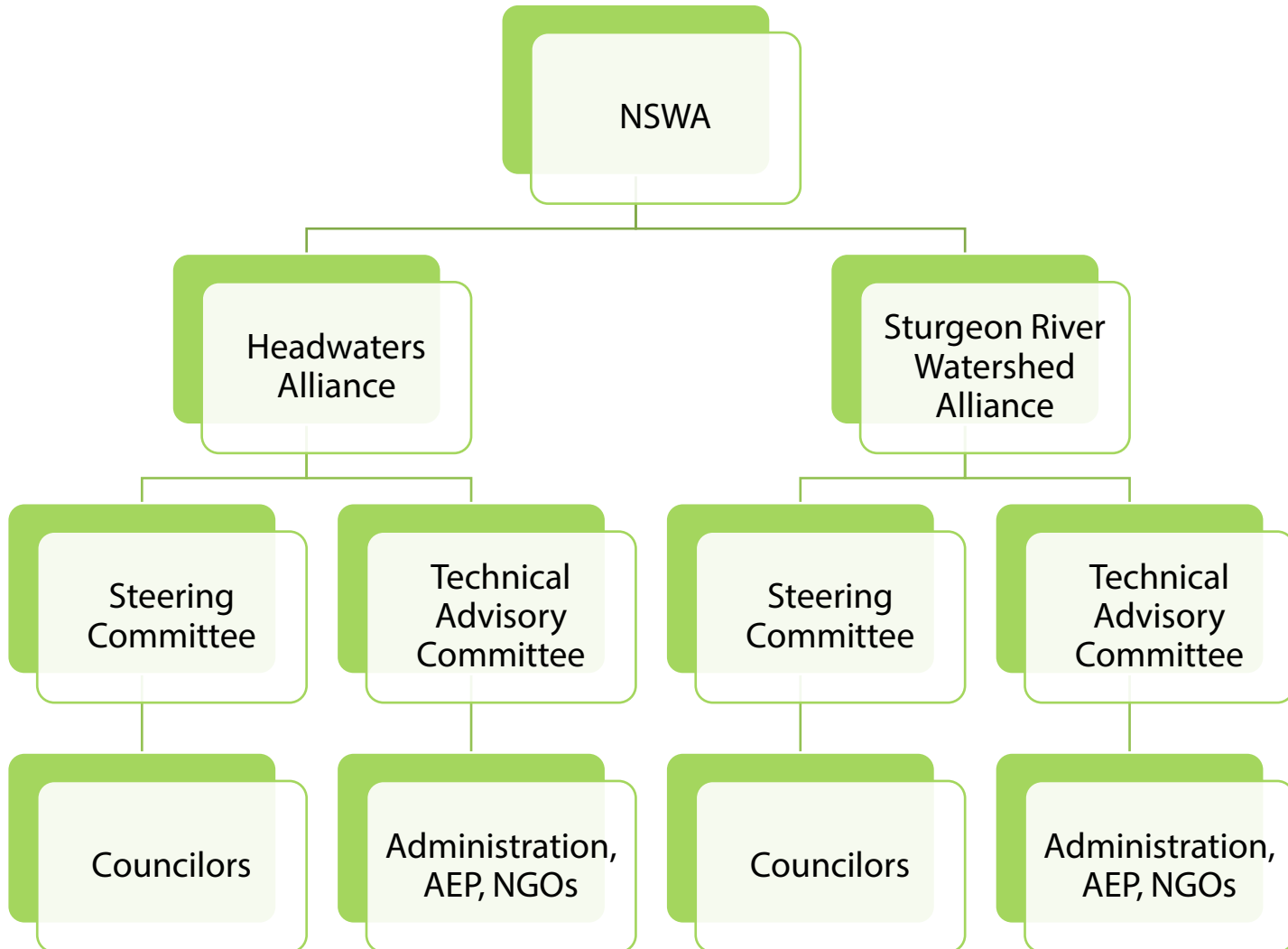
Legend

- Municipal Partners
- City of Edmonton
- North Saskatchewan Watershed Alliance
- Headwaters Alliance
- Sturgeon River Watershed Alliance
- Vermilion River Watershed Alliance

This map was created by the North Saskatchewan Watershed Alliance. The data used in this map was provided by Water Survey of Canada. November, 2016



WATERSHED ALLIANCES



WATERSHED ALLIANCE DELIVERABLES

- Implementing Provincial WFL Strategy and informing Provincial policy
- Developing Integrated Watershed Management Plans
 - Will include municipal recommendations
- Leveraging grants and providing staff capacity
 - Hundreds of thousands of dollars received from Provincial, Federal, & NGOs
- Filling knowledge gaps
 - Technical reports used to update MDPS, LUBs, ICSPs, etc.
- Administering inter-municipal partnership tables
 - Policy alignment
 - Information sharing
- Assisting watershed stewardship groups
 - State of the Watershed Reports
 - Lake Watershed Management Plans

LILSA REQUEST

1. Become a member of LILSA and provide an annual monetary contribution.
2. Provide representation at LILSA Board meetings
3. Endorse the development of a lake management plan and provide and representative on the Water Quality and Water Quantity Project Committee.



ADMIN RECOMMENDATIONS

1. Direct administration to include a LILSA membership in the 2027 budget.
2. Appoint a Council member to the LILSA Board at Council's 2026 AGM (if desired)
3. Endorse the development of a lake management action plan through the SRWA and not appoint a representative to the WQ² committee at this time.



QUESTIONS?

“Water does not
come *from* the
river.

It comes *to* the
river” - Kevin Van Tighem

