

# Draft Dedication and Use of MR,ER, ERE Policy and RSMM

Planning and Development Services

# Purpose

- Establish a policy for the dedication and use of Environmental Reserve (ER) and Environmental Reserve Easements (ERE).
- Update the existing dedication of Municipal Reserve (MR) Policy.
- Create a Riparian Setback Matrix Model (RSM) to assist in the establishment of Environmental Reserve Dedications and development setback requirements.

# Dedication and Use of MR, ER, ERE Policy

- Tentatively scheduled for GPC July 7, 2015
- Integrates ER and ERE into the previous MR Policy.
- Separates dedication and use procedures for MR, ER, ERE from the policy.
- Directs administration to acquire the maximum dedication.

# Dedication of MR, ER, ERE Procedure

- Includes the procedural aspects of the previous MR policy.
- Includes new procedures for dedicating MR in Bareland Recreational Resort (BRR) developments.
- Contains new procedures on the dedication of ER and other conservation methods.

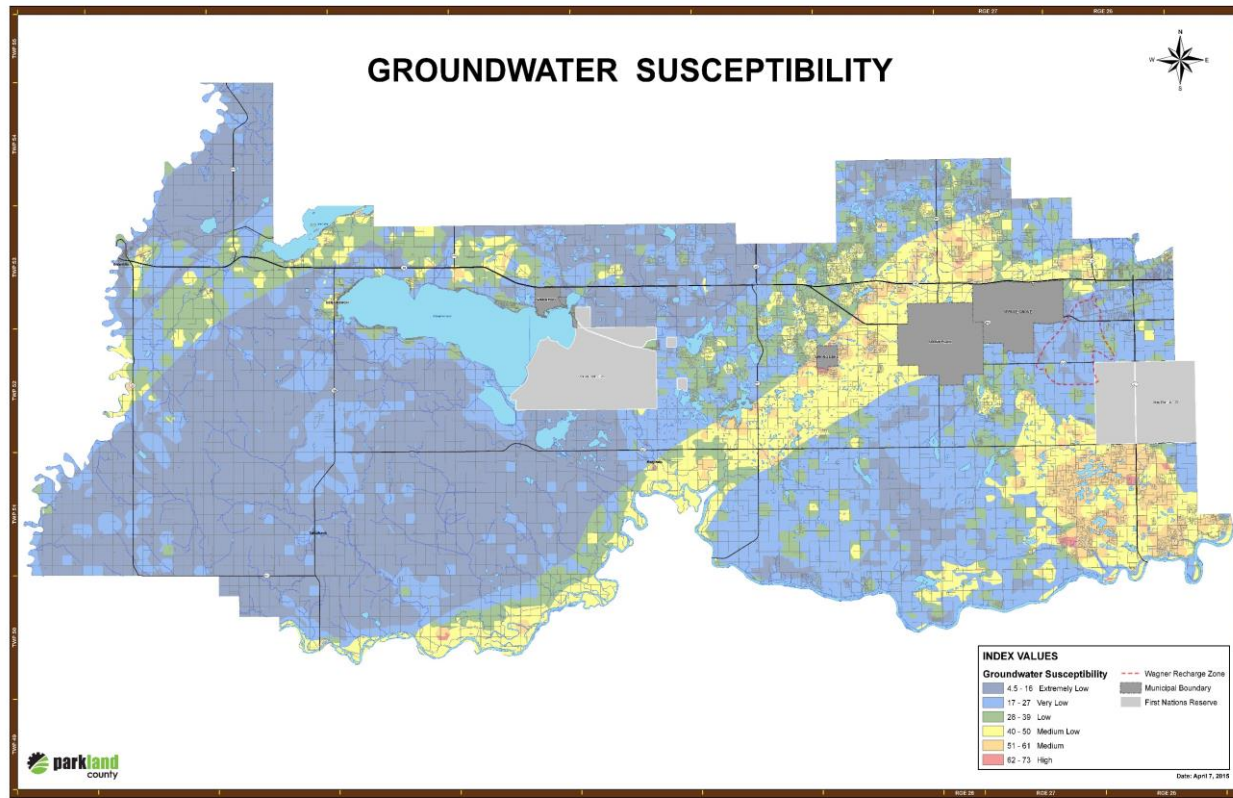
# Use of MR,ER, ERE Procedure

- New policy that reinforces uses allowed on MR and ER lands under the Municipal Government act.

# RSMM

- Parkland County has created a Riparian Setback Matrix Model to assist in the establishment of ER boundaries and required development setbacks.
- One of the driving factors for the RSMM is groundwater susceptibility. Parkland County has created a groundwater susceptibility map from the data in the ECMP to guide the RSMM calculations.
- Some example of how the new ER policies will be utilizing the RSMM have been created.

# Groundwater Susceptibility Map



## INDEX VALUES

### Groundwater Susceptibility

4.5 - 16	Extremely Low
17 - 27	Very Low
28 - 39	Low
40 - 50	Medium Low
51 - 61	Medium
62 - 73	High

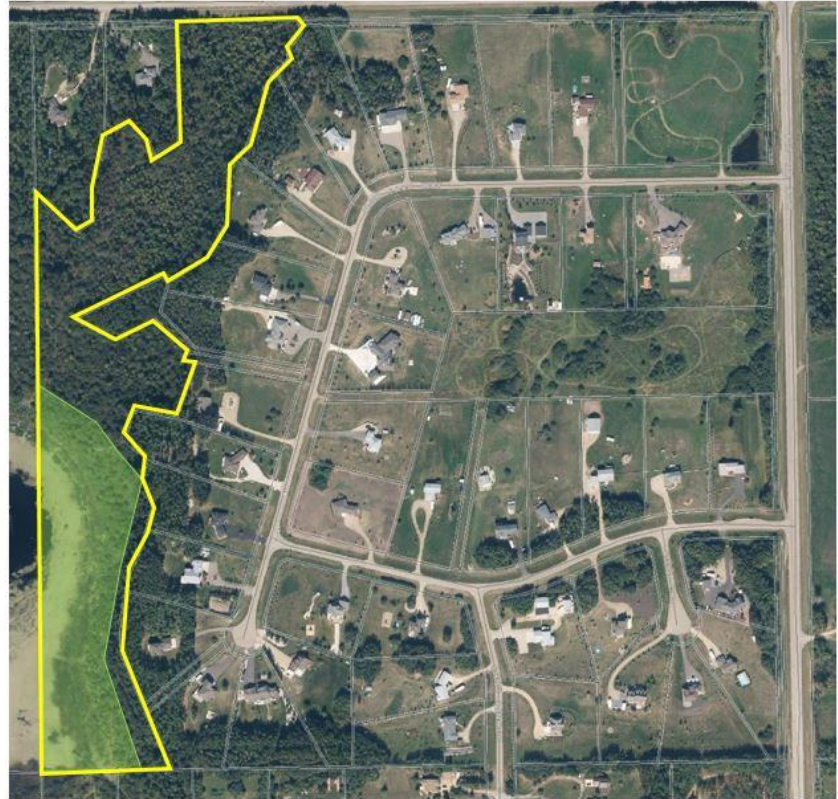
--- Wagner Recharge Zone
■ Municipal Boundary
■ First Nations Reserve



Date: April 7, 2015



# Multi Parcel Residential Subdivision

- RSMM will not required
- Biophysical assessment is already required in this situation



-  ER Including Biophysical Elements
-  ER Defined by RSMM



# Agricultural Area within an ESA with low groundwater susceptibility

- Environmentally Sensitive area within agricultural parcels over 16ha in size (40ac)
- Subdivision authority will determine whether the dedication is necessary.
- Where unnecessary the County will use tools such as Conservation Easements and ALUS.
- Where necessary the County will use an Environmental Reserve Easement with boundaries defined by the RSMM



# Agricultural Area not within an ESA with a low groundwater susceptibility

- Subdivision of three residential parcels adjacent to a body of water (creek).
- Environmental Reserves not required
- RSMM will be utilized to establish the setbacks of the future property lines from the creek.



# Development within an ESA in a highly susceptible groundwater area

- 48 acre parcel
- Not currently the subject of a subdivision application.
- Development site is surrounded by two lakes and a ravine.
- Required to develop outside of the RSMM Setback zone shown in red.



Inset of Development Area



Setback Zone (Development Prohibited)

Note: The proposed policy does not allow for the use of the RSMM in determination of Development Setbacks. Administration is preparing to bring forward a Land Use Bylaw amendment that will require the use of the RSMM to determine develop setbacks for proposed developments adjacent to bodies of water at a later date.





# Questions?