



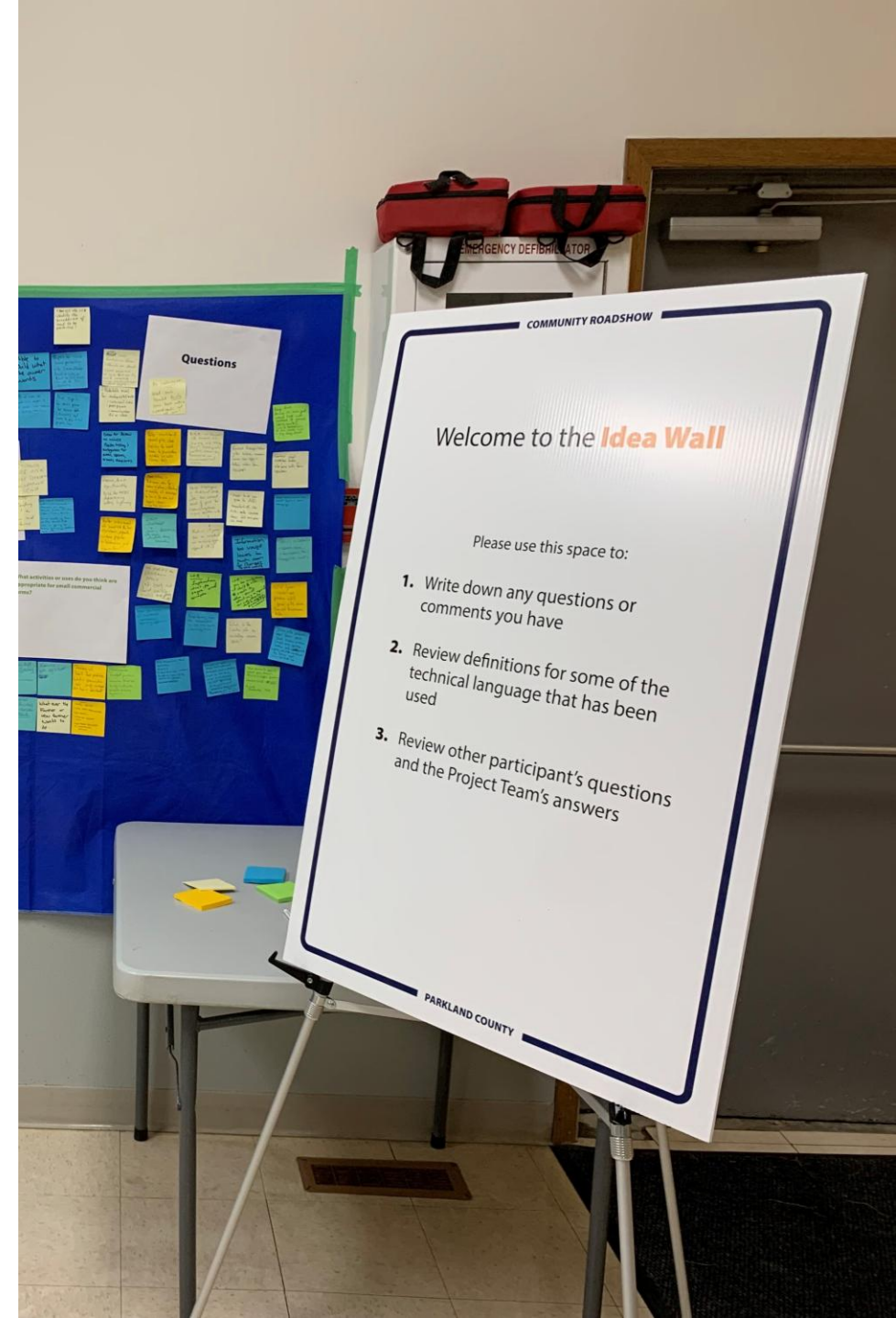
**WAVE ONE DEVELOPMENT
AREA POLICIES (DAP) AND
AREA STRUCTURE PLANS (ASP)
PUBLIC ENGAGEMENT PLAN**

Governance and Priorities Committee
May 5, 2026



Table of Contents

- Recap
- Engagement Approach
- Advertising
- Approvals
- Next Steps
- Conclusion





Recap

Goals & Objectives

Goal 1

Align Policies

Create a land use planning policy structure that is predictable, easy to maintain, and consistently applied throughout the County.

Goal 2

Streamline Services

Ensure that each ASP in the County contains the appropriate level of policy detail to enable a streamlined development process.

Goal 3

Flexibility/Adaptability

Make ASPs living documents that manage risk for the County and provide opportunities/transparency to applicants that identify “hard no’s” early in the process while always working towards “how can we get to a yes?”

Goal 4

User Friendliness

Write ASPs that are approachable to the general public and adaptable to the changing economic environment.

Recap Hierarchy

01

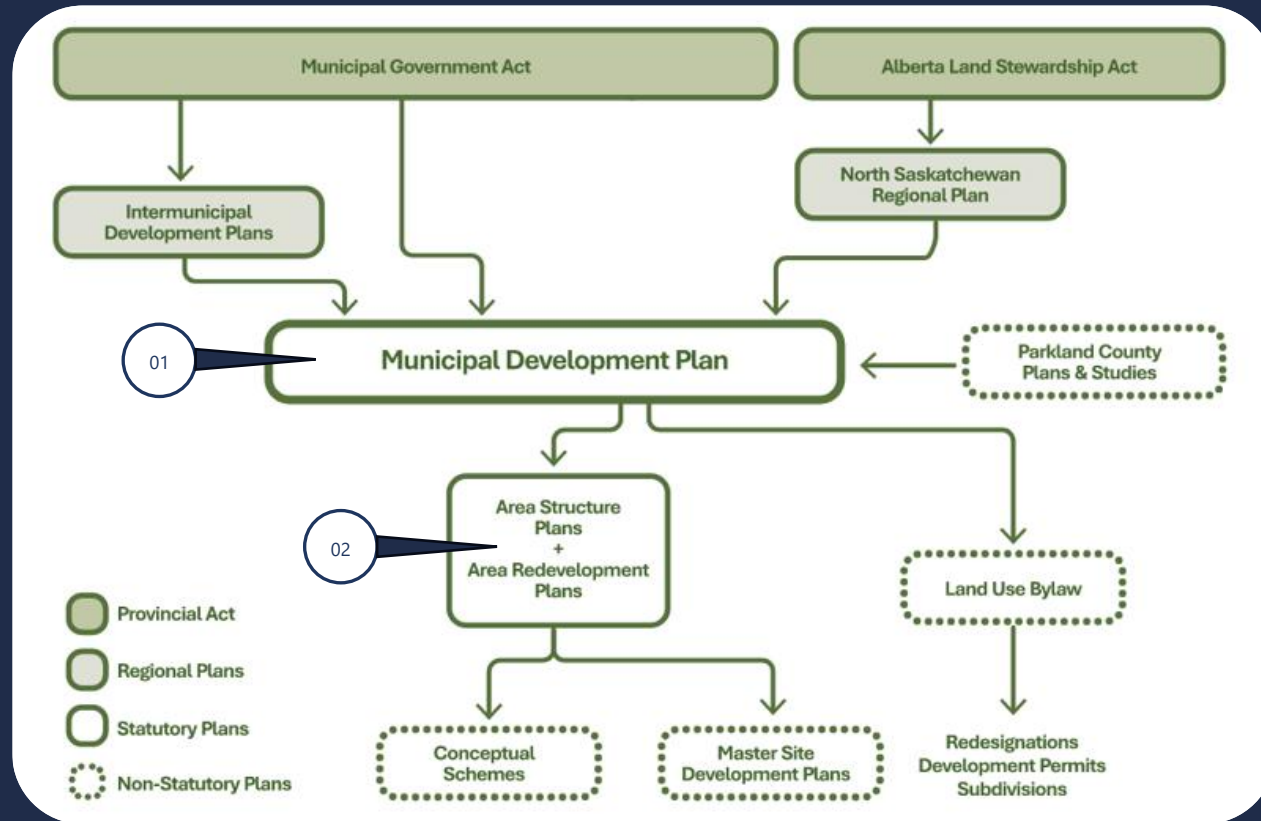
Development Area Policies

- Statutory by embedding in MDP
- Based on Development Concept Areas
- Requirements for ASPs and Local Plans

02

Area Structure Plans

- Smaller footprint than most existing ASPs
- Areas with most development pressure and complexity



Recap Wave One

2026

2027

Acheson ASP

Update

River's Edge DAP

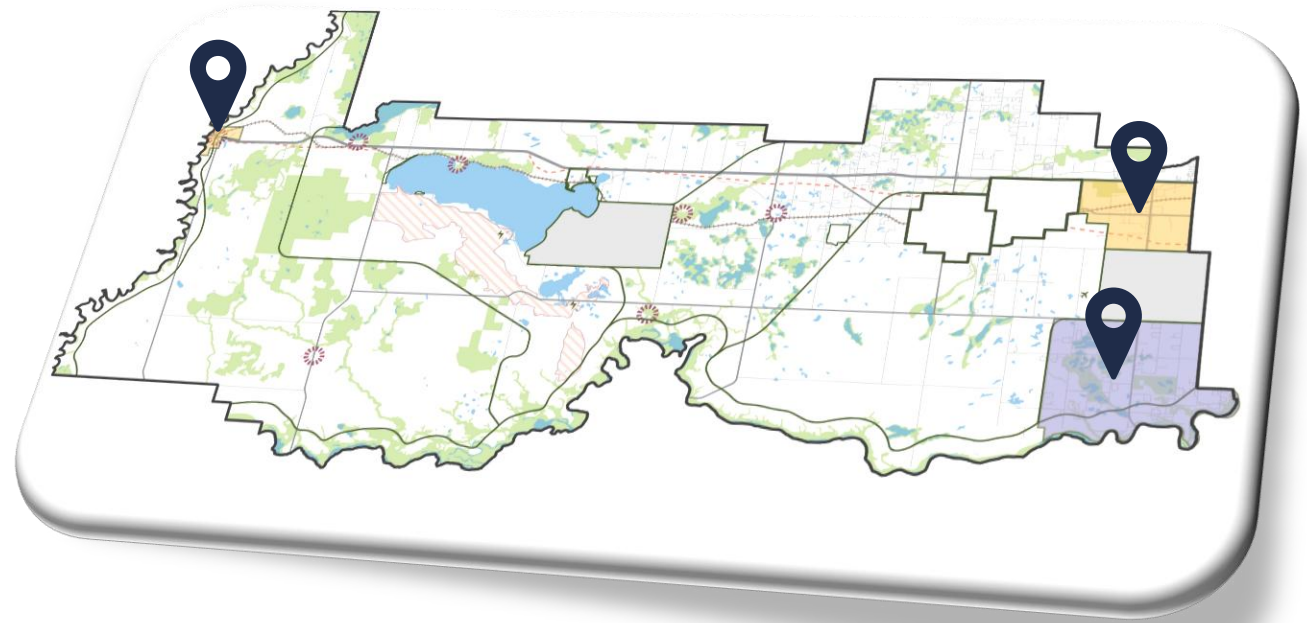
Create

Woodbend-Graminia ASP

Rescind

Entwistle ASP

Rescind





Engagement Approach

Entwistle Area Structure Plan Rescinding

Stage 1 – Inform	
Council Economic Diversification Committee Touch Base	June, 2026
Chats with a Planner at Entwistle Community Rec Centre	Once Monthly May-August, 2026
Mailout / Letter Drop	May, 2026
Public Open House	June, 2026
Webpage Online Engagement Options	May - June, 2026
Publish What We Heard Report	End of June, 2026



Engagement Approach

River's Edge Development Area Policies / Woodbend Graminia Area Structure Plan Rescinding

Stage 1 – Inform	
Council Committees Touch Base	June, 2026
Public Open House	June, 2026
Webpage Online Engagement Options	May – June, 2026
What We Heard Report	End of June, 2026
Stage 2 – Confirm	
Council Committees Touch Base	August, 2026
Community Leader's Workshop	August, 2026
Take Home Engagement*	August – September, 2026
Community Leader's Debrief*	September, 2026
Public Open House	September, 2026
Webpage Online Engagement Options	August – September, 2026
What We Heard Report	Early October, 2026

Advertising



01

Print & Hardcopy

02

YourParkland

03

County Website

04

Social Media

05

Digital Boards & Road Signs

Approvals Tentative Schedule

Entwistle ASP Rescinding

- 1st Reading: September, 2026
- Public Hearing: October, 2026
- 2nd / 3rd Reading: October, 2026

River's Edge DAP Adoption / Woodbend Graminia ASP Rescinding

- 1st Reading: December, 2026
- Public Hearing: January, 2027
- 2nd / 3rd Reading: January, 2027



Next Steps

01

Prepare Materials

02

Advertise and Execute





Conclusion: Summary



Implementing First Wave of ASP Prioritization Project



Wide Range of Advertising and Multiple Opportunities for Engagement



Aligns with County Engagement Policy C-AD51



Conclusion: Recommendation to GPC

That the Governance and Priorities Committee accept the Wave One Development Area Policies and Area Structure Plans Public Engagement Plan for information

Thank you!

Any Questions?



SUPPLEMENTAL SLIDES

Governance and Priorities Committee
May 5, 2026

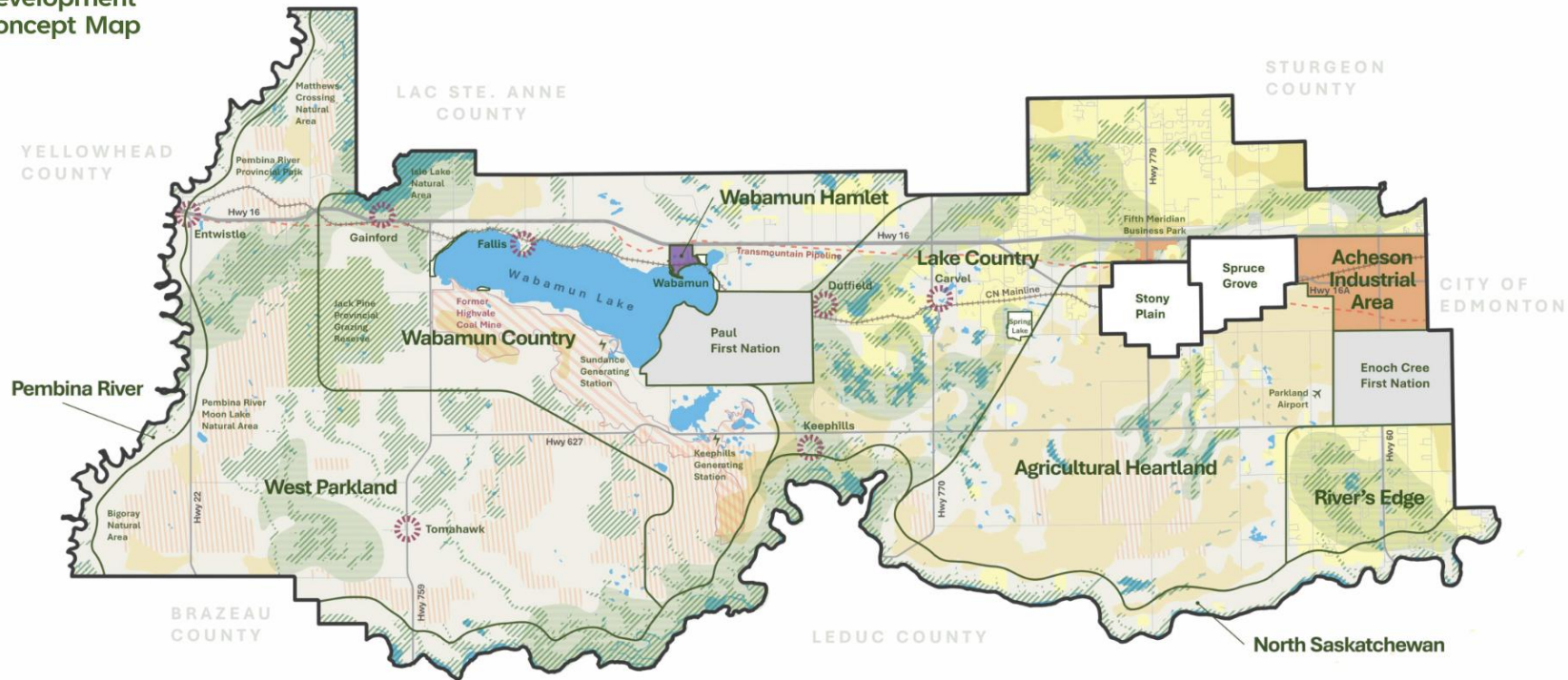


Maps Development Concept Areas



Parkland County Municipal Development Plan
Chapter 2: Development Concept

2.3 Development Concept Map



Legend

- Municipal Boundaries
- Special Area Boundaries
- First Nation Reserves
- Villages & Summer Villages
- ✳ Hamlets
- Highway and Major Road Corridors
- - - Interregional Pipeline Corridors
- ⚡ Interregional Rail Corridors
- Former Mine Areas
- Water
- Rural Agricultural Areas
- Prime Agricultural Areas
- Major Employment Areas
- Priority Growth Hamlets
- Country Residential Areas
- High Priority Landscapes
- Environmentally Significant Areas
- Confined Feeding Operation Compatible Areas

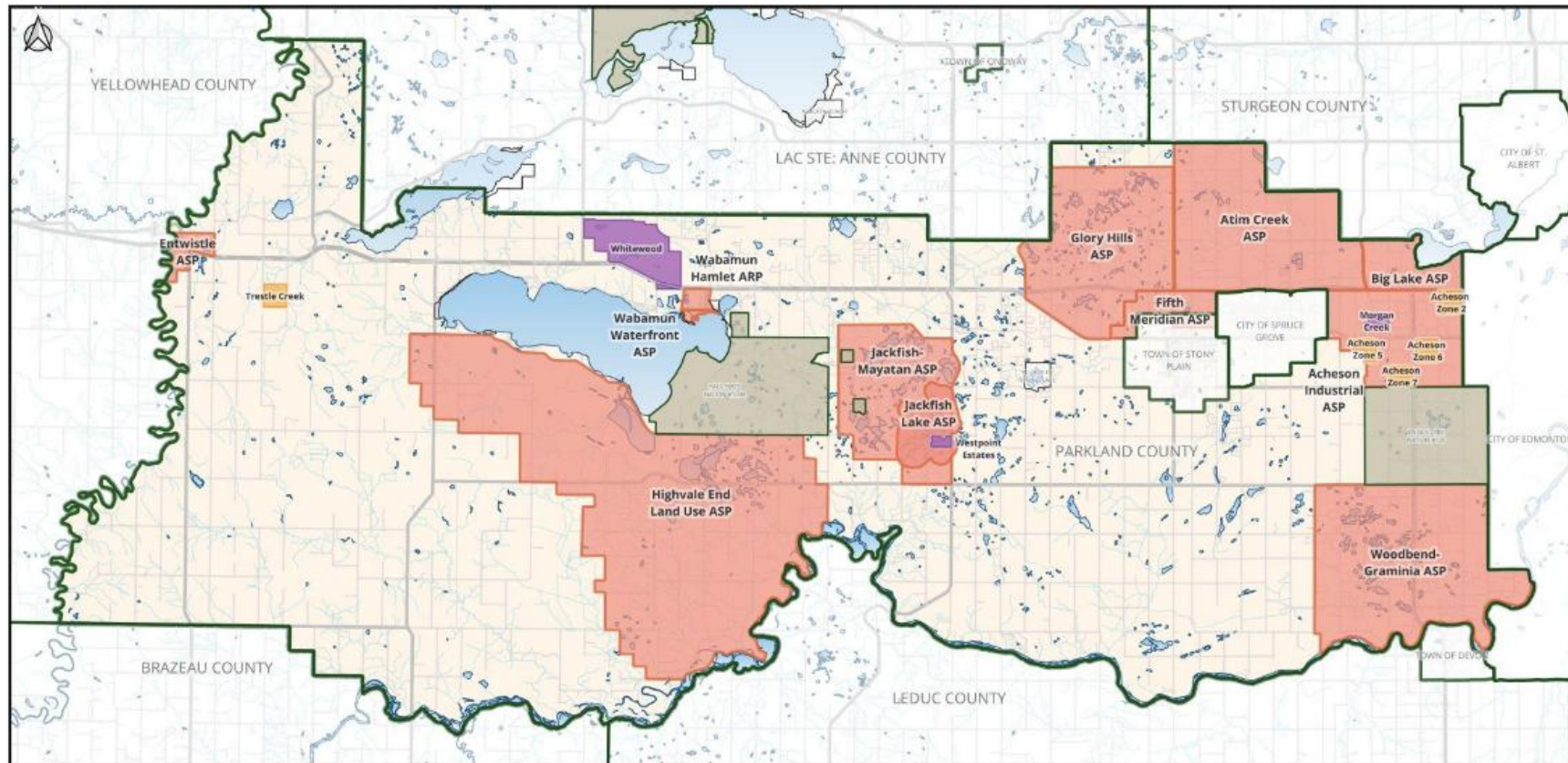


Figure 4. Development Concept Map

Maps Plans in Effect



Map of In-Effect Plans



Legend

- Conceptual Schemes
- Outline Plans
- Area Structure Plans
- Parkland County
- Waterbodies
- First Nation Reserve Lands

