

BYLAW INFORMATION

SITE INFORMATION

LOT:333
BLOCK: 1
PLAN:

MUNICIPAL ADDRESS:

SITE AREA: 8.8 ACRES (383348.05 SQ FT)

ZONING

MI - MEDIUM INDUSTRIAL DISTRICT

ALLOWED USE

CLASSIFICATION: GENERAL INDUSTRIAL
PERMITTED: X DISCRETIONARY:

SETBACKS

FRONT (SOUTH) 23.0 M (75.5 FT)
SIDE (WEST) 9.0 M (29.5 FT)
REAR (NORTH) 9.0 M (29.5 FT)
SIDE (EAST) 9.0 M (29.5 FT)

PARKING SETBACK (FRONT) 6.0 M (19.7 FT)

PARKING

REQUIRED:
GENERAL INDUSTRIAL: 1 STALL / 100 SQ M (1077 SQ FT)
OFFICE: 3.4 STALLS / 100 SQ M (1077 SQ FT)

TOTAL SHOP AREA: 23,680 SQ FT

TOTAL OFFICE AREA: 5330 SQ FT

(1 STALL / 1077) * 23680 = 22 PARKING STALLS
(3.4 STALLS / 1077) * 5330 = 17 PARKING STALLS
TOTAL = 39 PARKING STALLS

ACCESSIBLE PARKING STALLS
2 OF THE 39 STALLS SHALL BE H.C. ACCESSIBLE
AS PER ABC TABLE 3.8.2.2

TOTAL PROVIDED:

PARKING SCHEDULE			
Type Mark	Count	Type	Type Comments
i	2	9' x 18' (5' Aisle)	ACCESSIBLE PARKING STALL
ii	37	9' x 18' - 90 deg	STD PARKING STALL

Grand total: 39

LANDSCAPING

MIN 30% OF FRONT & SIDE YARDS TO BE LANDSCAPED
1 TREE / 60 SQ M (646 SQ FT) 1 DECIDUOUS : 1 CONIFEROUS
1 SHRUB / 80 SQ M (861.5 SQ FT) 2 DECIDUOUS : 1 CONIFEROUS

AREA FRONT AND SIDE SETBACKS = 83,143 SQ FT

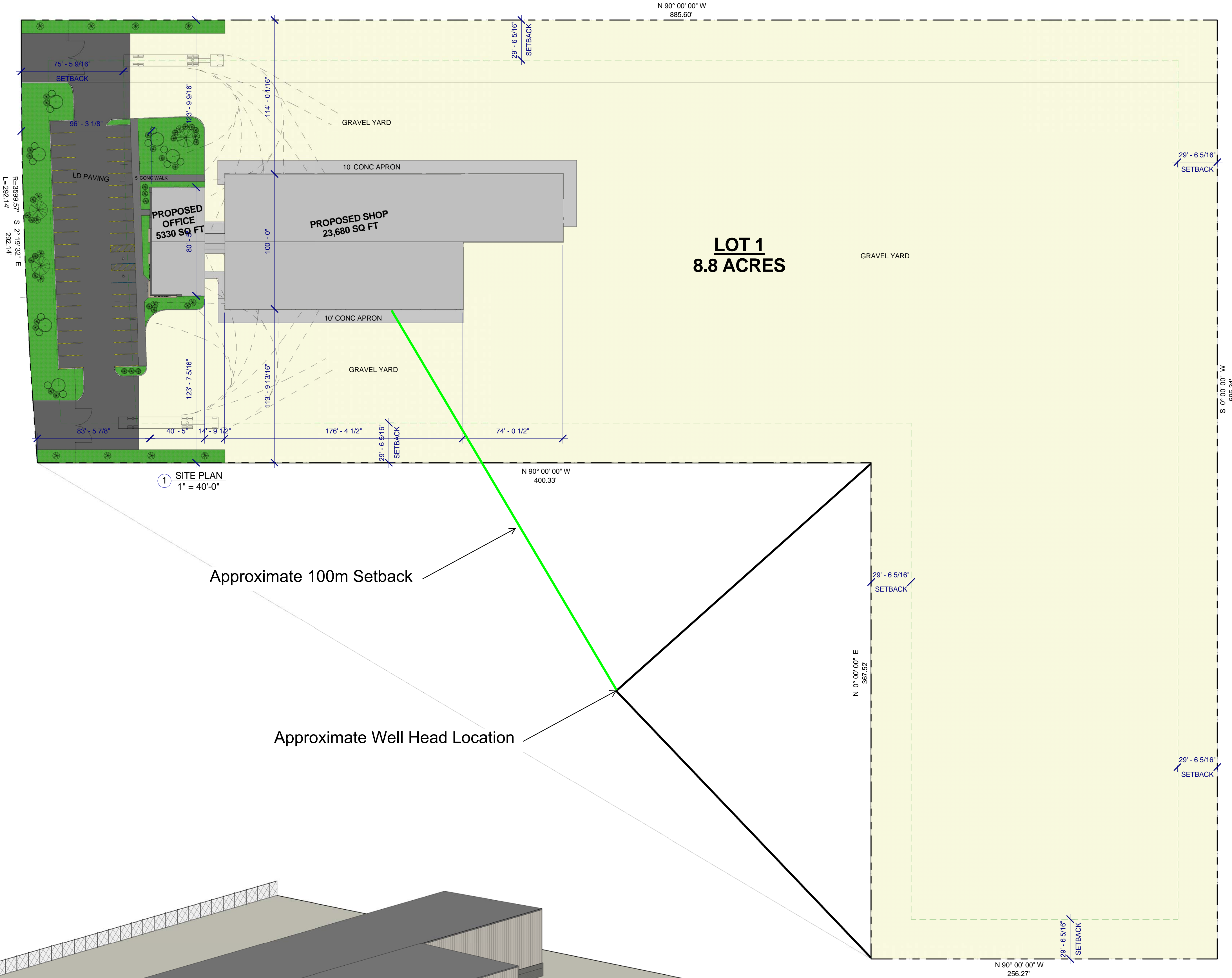
30% OF 83,143 SQ FT = 24,943 SQ FT **PROVIDED 12,258 SQ FT**

(1 TREE / 646) * 24,943 = 39 TREES (20 DECIDUOUS & 19 CONIFEROUS)
(1SHRUB / 861.5) * 24,943 = 29 SHRUBS (20 DECIDUOUS & 9 CONIFEROUS)
TOTAL = 68 PLANTS

TOTAL PROVIDED:

PLANTING SCHEDULE				
Type Mark	Count	Type Comments	Type	Family
1	3	Large tooth Aspen	Large tooth Aspen - 25'	RPC Tree - Deciduous
2	6	Eastern Hemlock	Eastern Hemlock - 25'	RPC Tree - Conifer
3	13	Colorado Spruce	Colorado Spruce - 13'	RPC Tree - Conifer
4	8	Gray Birch	Gray Birch - 10'	RPC Tree - Deciduous
5	8	Kousa Dogwood	Kousa Dogwood - 10'	RPC Tree - Deciduous
6	21	Burning Bush	Burning Bush 4'-6"	RPC Shrub
7	12	Cedar Shrub	Cedar Shrub 3'-0"	RPC Shrub

Grand total: 71



Approximate 100m Setback

Approximate Well Head Location

2 BIRDS EYE VIEW

