

Highvale End Land Use Area Structure Plan update

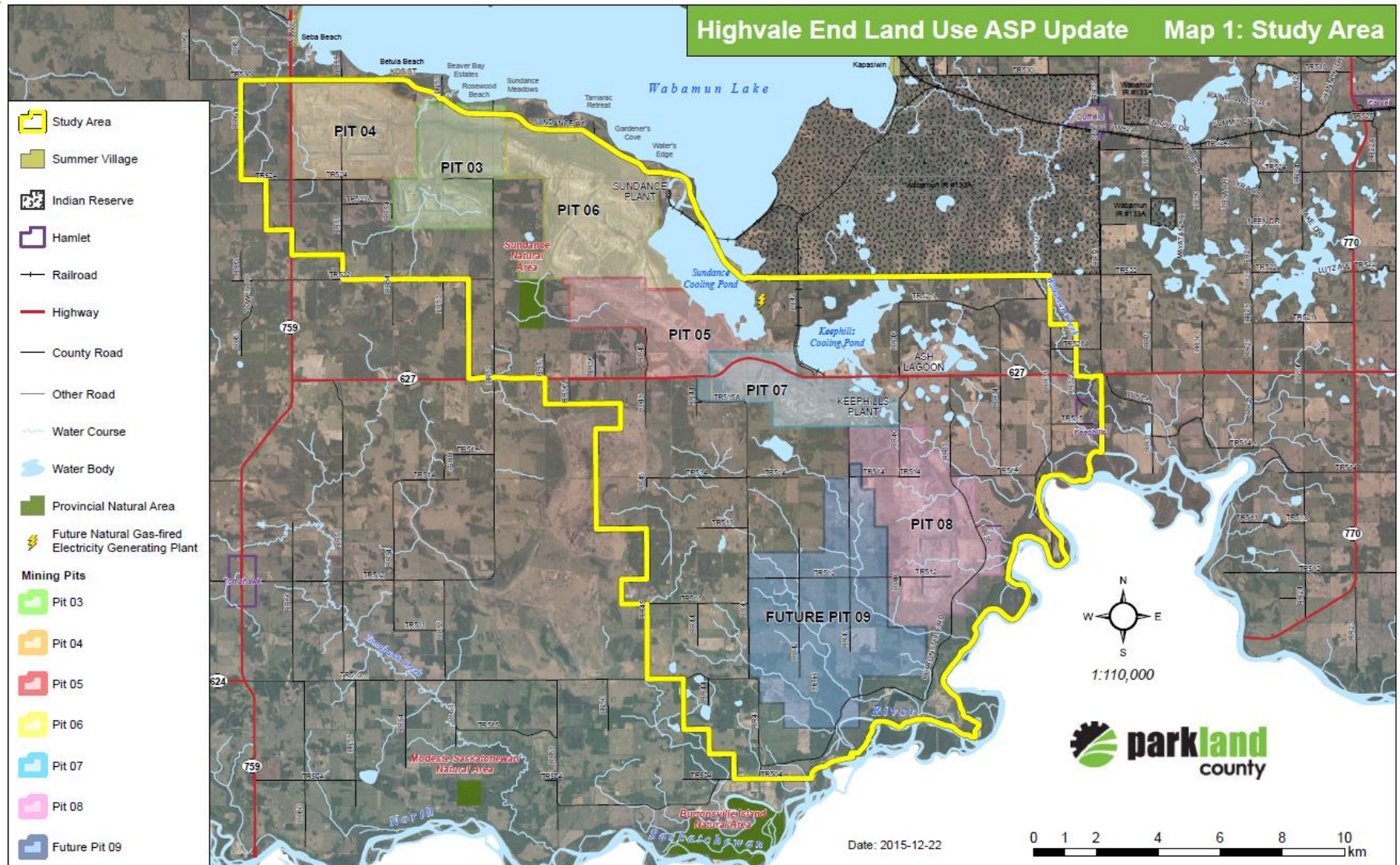
Council update – January 12, 2016



parklandcounty.com

Project Overview

- Highvale End Land Use Area Structure Plan.
- Update to:
 1. Reflect expanded mine boundaries and updated reclamation plan.
 2. Align with current provincial and municipal plans.



Process

PHASE 1: Scan & Analysis

- Review documents and mapping.
- Complete background report.

PHASE 2: Draft ASP

- Prepare project vision and key concepts.
- Prepare the draft Area Structure Plan.

PHASE 3: Consultation and Review

- Complete consultation on draft ASP.
- Present draft ASP to Council.

We are here.

- Administrative report and project scope of work.

Phase 1 highlights

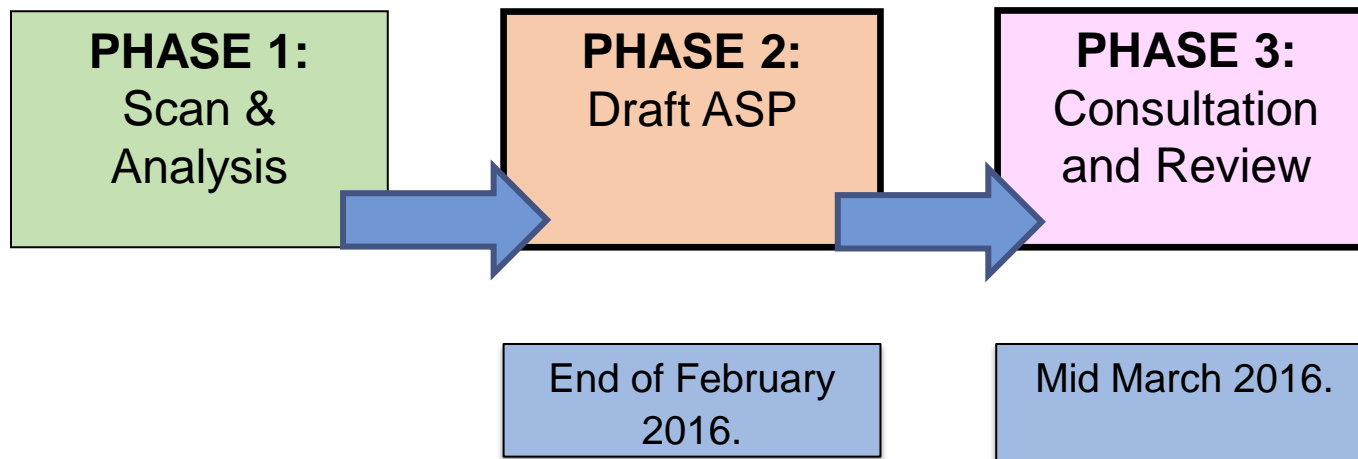
- Change of study area boundary.
- May public open house and November public workshop.
- December 14, 2015 steering committee meeting.
- Completion of background report and confirmation of project vision statement.

Vision statement

The Highvale area has a history that is celebrated, ecosystems that are healthy and biodiverse, an active community life and recreational amenities that are supported by its residents, and an economic base built on agriculture and strategically located commercial and industrial employment areas.

Next Steps

- Completion of Phase 2 and public open house.
- Presentation to Council – Draft ASP.



Questions