

# CONNECTED

MAYOR AND COUNCIL

**WE ASK FOR YOUR SUPPORT  
TO INCLUDE US IN THE SEBA  
BEACH IDP**

WE WOULD LIKE TO BE INCLUDED  
AS A RESIDENTIAL PARCEL IN THE  
SEBA BEACH IDP

FOR A GREATER CONNECTION TO  
LOCAL RESIDENTS,  
ADMINISTRATION AND COUNCIL.



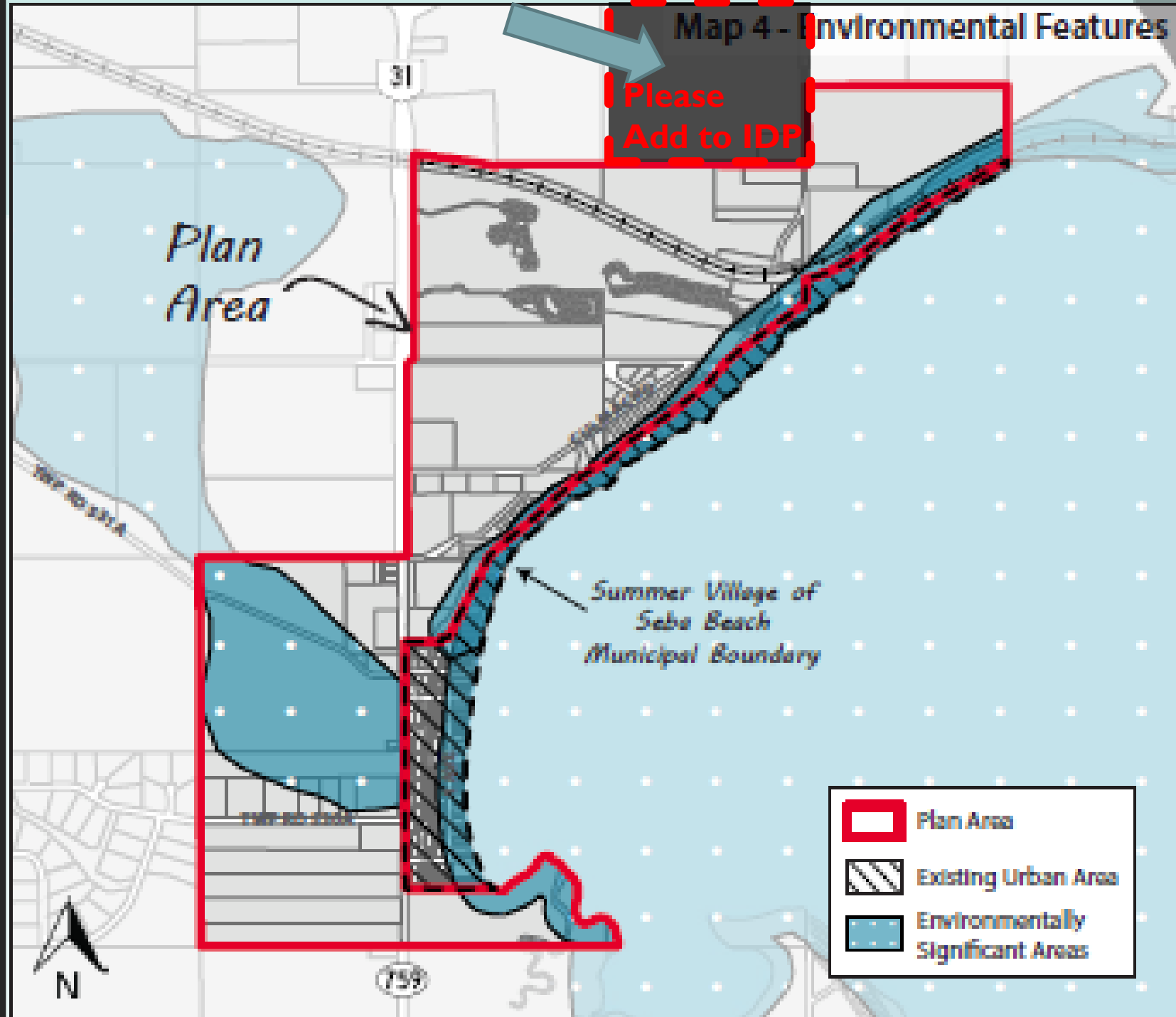
# CONNECTED

NO ENVIRONMENTALLY  
SENSITIVE AREAS

NO TOP OF BANK ISSUES

NO PHOSPHOROUS ISSUES

NO RIPARIAN ISSUES



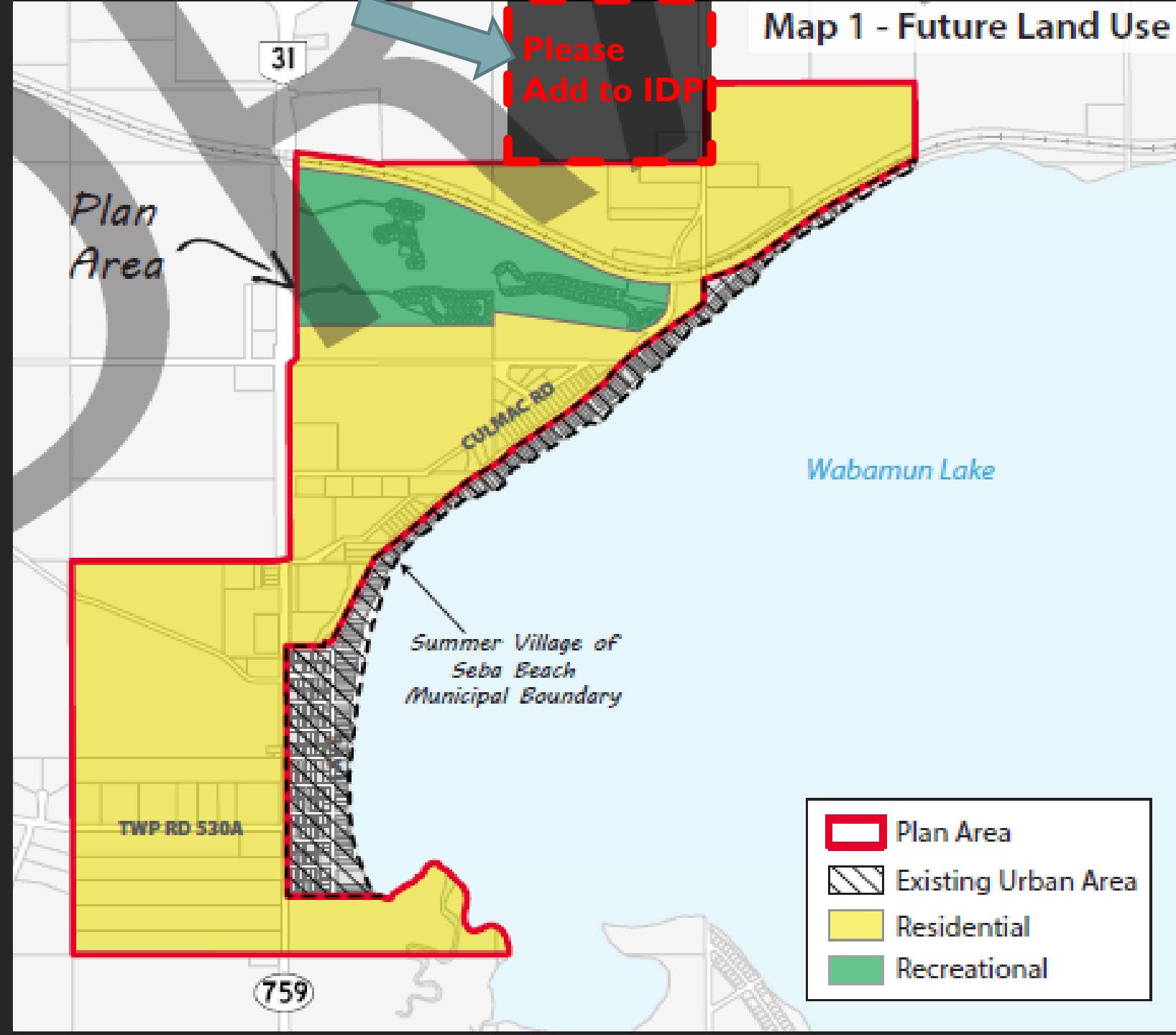
# CONNECTED

LOCAL ROAD ACCESS TO  
INTERCHANGE

ZONED (CR)

UPGRADED ACCELERATION &  
DECELERATION LANES TO &  
FROM EDMONTON ON HWY 16

ACCESS TO GAS/ELECTRICITY





# CONNECTED

CLOSE TO HWY 16

3 WOOD AND A PITCHING WEDGE  
TO SEBA BEACH BORDER

CLOSE TO GOLF COURSE

CLOSE TO LAKE WABAMUN

ON SEBA SHORTCUT RD

WALKING/BIKING DISTANCE TO ICE  
CREAM

WALKING/BIKING DISTANCE TO  
BEACH



---

# CONNECTED

HOMESTEADED BY MY GREAT  
GRANDFATHER

GRANDMOTHER RAN A  
RESTAURANT IN SEBA

MOTHER WENT TO SEBA  
SCHOOL

AS A YOUNG KID I WOULD  
WALK TO THE BEACH FROM  
THE FARM

WOULD LIKE TO KEEP FOR  
ANOTHER 40+ YEARS





# CONNECTED

MAYOR AND COUNCIL

**WE ASK FOR YOUR SUPPORT  
TO INCLUDE US IN THE SEBA  
BEACH IDP**

WE WOULD LIKE TO BE INCLUDED  
AS A RESIDENTIAL PARCEL IN THE  
SEBA BEACH IDP

FOR A GREATER CONNECTION TO  
LOCAL RESIDENTS,  
ADMINISTRATION AND COUNCIL.

