



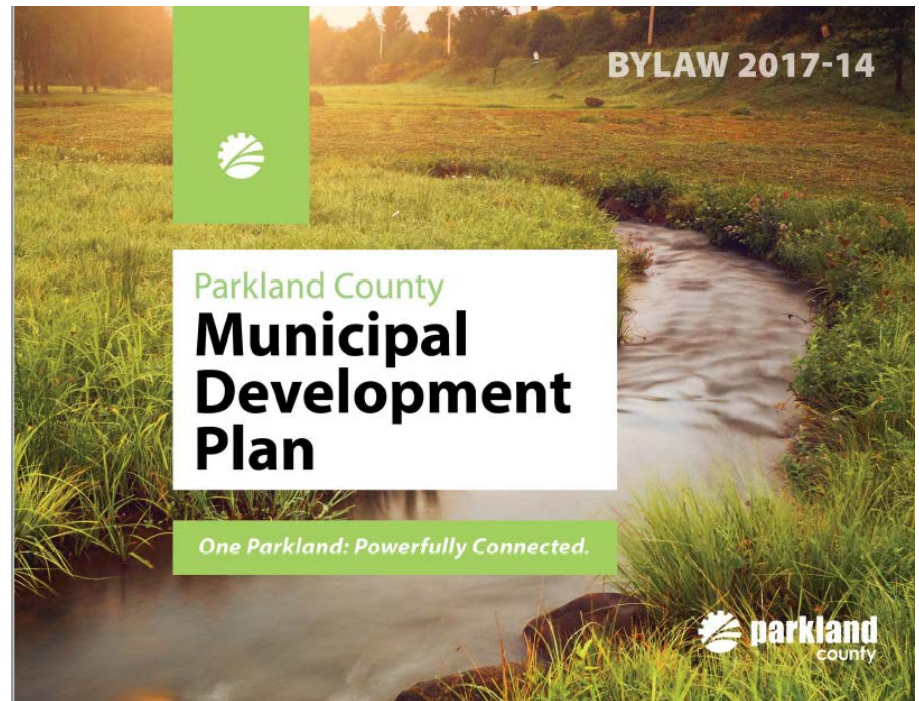
**BYLAW 2019-15 - PROPOSED AMENDMENTS TO MUNICIPAL  
DEVELOPMENT PLAN**

PUBLIC HEARING PRESENTATION

OCTOBER 22, 2019

# PURPOSE OF PRESENTATION

- ❖ Present Bylaw 2019-15: Proposed amendments to Municipal Development Plan Bylaw 2017-14



# PROPOSED AMENDMENTS

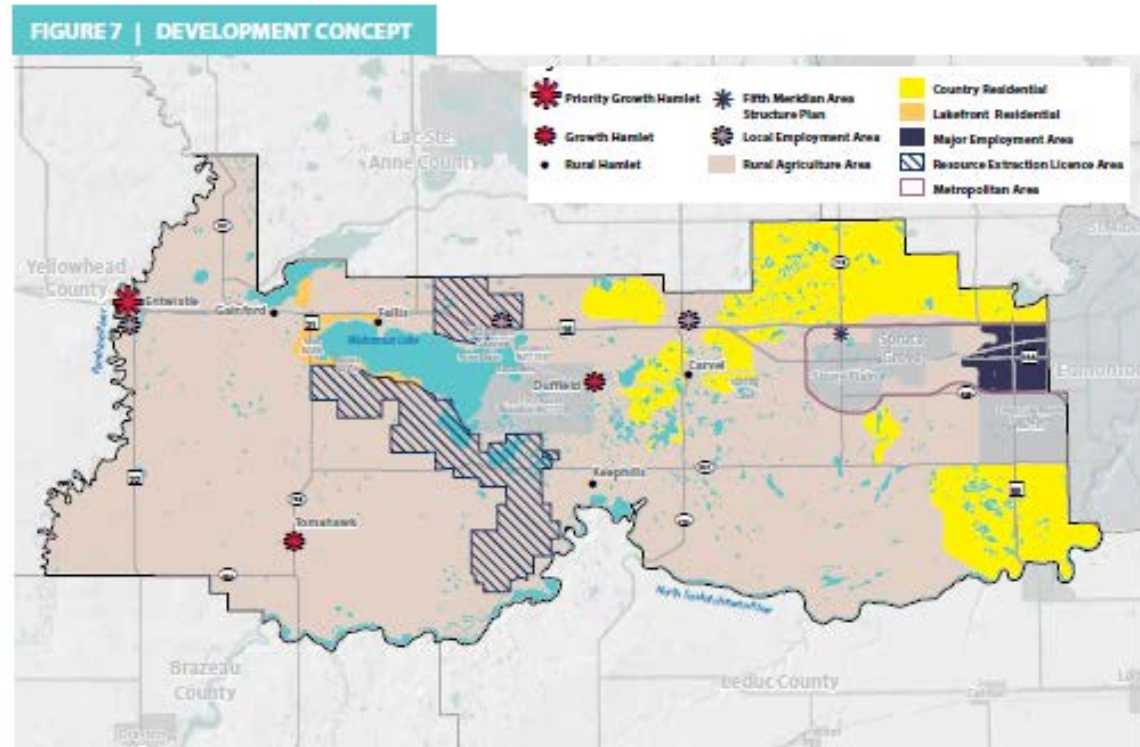
❖ Text amendments to support:

❖ mix of land uses in the County's residential areas

❖ potential for recreation & tourism type developments to be developed in residential areas

❖ No mapping amendments (text changes only)

❖ Amendments are **County-wide** (not site-specific)



# COMPLETE COMMUNITIES



## COMPLETE COMMUNITIES

We recognize the diversity of Parkland's communities, while fostering a united and shared vision for Parkland as a whole

### GUIDING PRINCIPLE 1.1

**We offer a range lifestyle choices, community services, and other amenities to meet community needs**

- ❖ Amendments align with Long Term Strategic Plan **Pillar # 1 – Complete Communities**
- ❖ Support greater accessibility to amenities and community and economic opportunities

# COMPLETE COMMUNITIES

## COMPLETE COMMUNITIES

A “complete community” is one where you can live, work and play in the same neighbourhood.

**Complete communities** are supported by Parkland County’s Strategic Plan and Integrated Community Sustainability Plan.

- ✓ **LIVE:** ENCOURAGE CONVENIENT ACCESS TO SERVICES THAT CAN IMPROVE QUALITY OF LIFE.
- ✓ **WORK:** POTENTIALLY CREATE EMPLOYMENT OPPORTUNITIES CLOSER TO HOME.
- ✓ **PLAY:** ENCOURAGE LOCAL RECREATION AND TOURISM OPPORTUNITIES.

## MIXED LAND USE

A key element in creating complete communities includes encouraging a mix of land uses that facilitate better access to services and amenities for residents of all ages and ability levels.

A mix of land uses supports a diverse local economy while respecting the residential nature of an area.



PROPOSED MDP AMENDMENTS

# PROPOSED AMENDMENTS



## Section 7 – Rural Communities & Housing

- ❖ Support a mix of compatible land uses in Country Residential and Lakefront Residential areas



## Section 8 – Recreation & Tourism Development

- ❖ Consider recreational & tourism type uses in Country Residential and Lakefront Residential areas

# AMENDMENT HIGHLIGHTS

## ❖ **Section 7.0 - Rural Communities & Housing**

- Provides detail on what a complete rural community is
- Provides guidance that a mix of land uses may be supported in Country Residential and Lakefront Residential areas

## ❖ **Section 8.0 – Recreation & Tourism Development**

- Indicates this type of development may be considered in Country Residential and Lakefront Residential areas
- Provides criteria under which potential development may be considered (8.1.10 c)
- Indicates planning considerations for new recreation & tourism type developments in High Priority Landscapes (8.1.10 g)

Questions?