

TRANSIT UPDATE

Presented to the
Governance and Priorities Committee
February 3, 2026





Transit Update

- Tri-Region Commuter Transit and On-Demand Local Transit Services
- Transit Fares
- 2026 Transit Budget
- Current Tri-Region Transit Infrastructure
- Regional Transit Collaboration
- Future Tri-Region Transit

Tri-Region Transit

Parkland County, the City of Spruce Grove and the Town of Stony Plain's collaboration has resulted in successful commuter and local transit services being made available to the residents of the three Tri-Region area municipalities.

This success led Edmonton Regional Transit operators to explore similar collaboration opportunities for their areas.

Spruce Grove Transit (Tri-Region Transit) is operated by the City of Spruce Grove under contract with:

- Edmonton Transit Service for the Commuter Transit Service,
- Keolis for the On-Demand Local Transit Service,
- RideCo provides the booking software for the On-Demand local transit service.



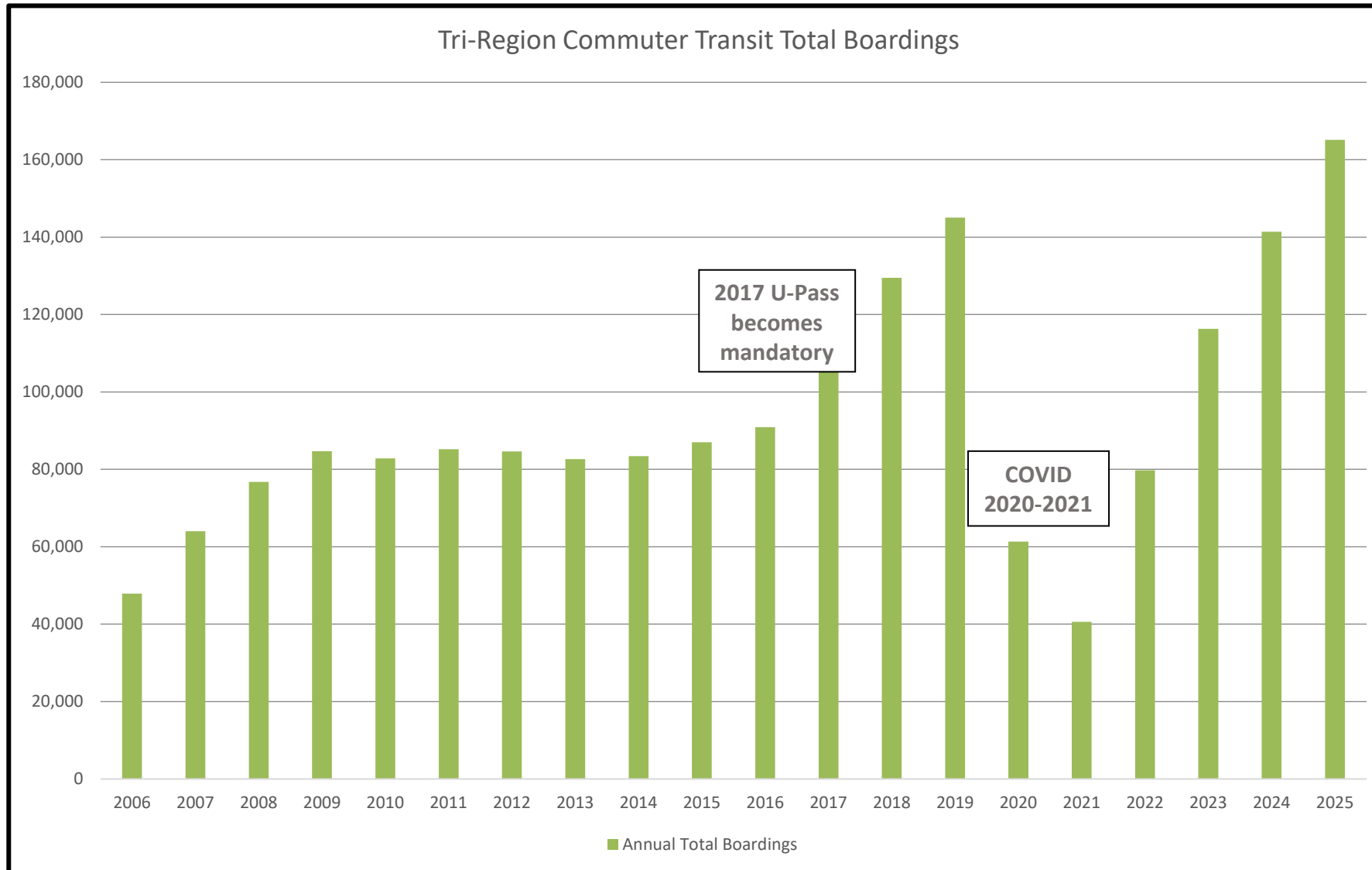


Tri-Region Commuter Transit Service

- The Commuter Transit Route 560 operates on Highway 16 between Spruce Grove and Edmonton. Destinations include; Spruce Grove, Mitchell ETS garage, NAIT, Downtown Edmonton and MacEwan University.
- The route operates weekdays from 5:30 AM to 10:00 PM.
- Parkland County and the Town of Stony Plain cost share the commuter transit expenses based on proportionate ridership boardings.
- 560 buses are tracked in real time. Riders can easily see if their bus is on time, late or early.

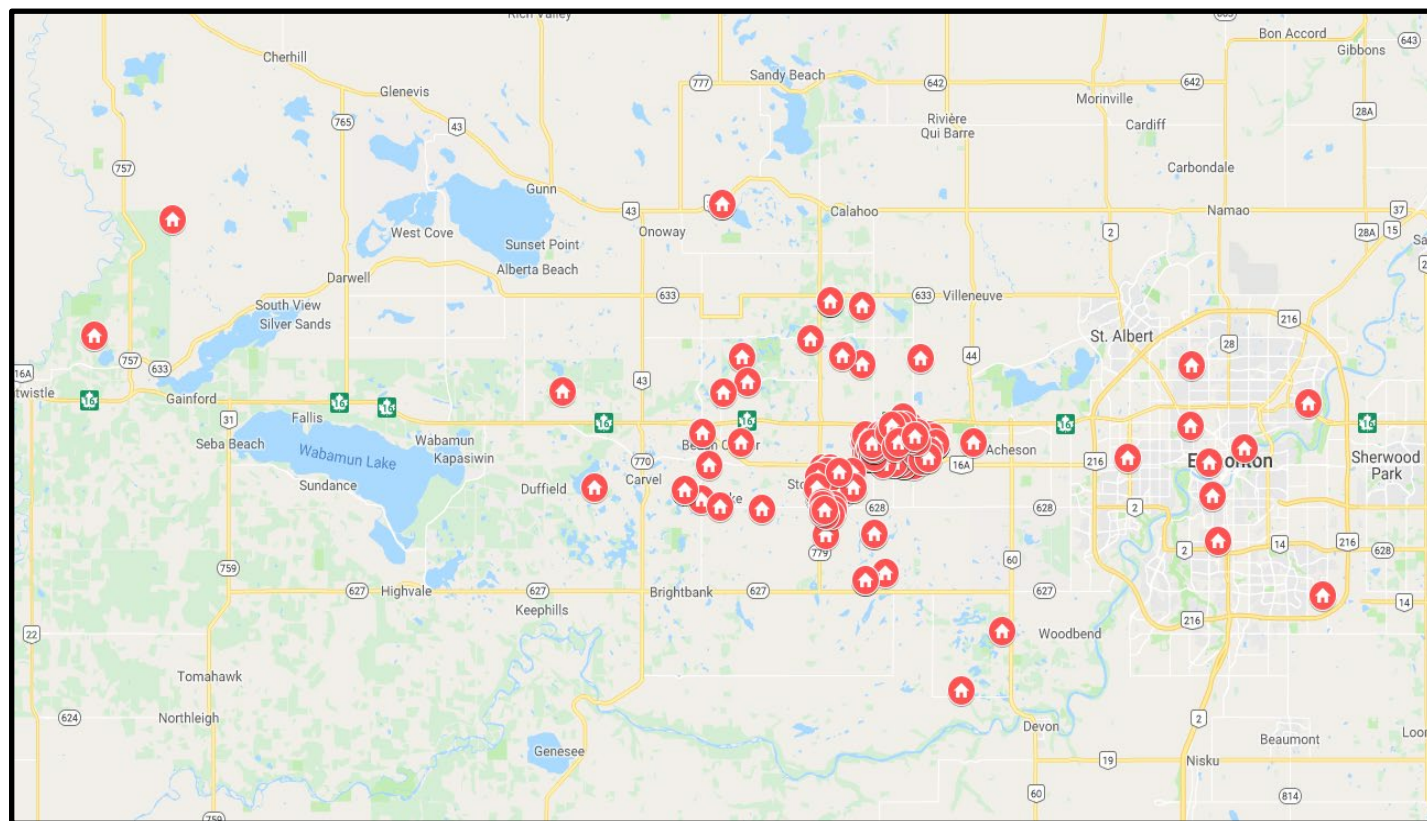


In 2025 ridership levels surpassed the 2019 pre COVID levels.
In 2020 and 2021 ridership levels had dropped to 1/3 of the 2019 ridership.





Home postal codes of commuter transit riders (November 2018)



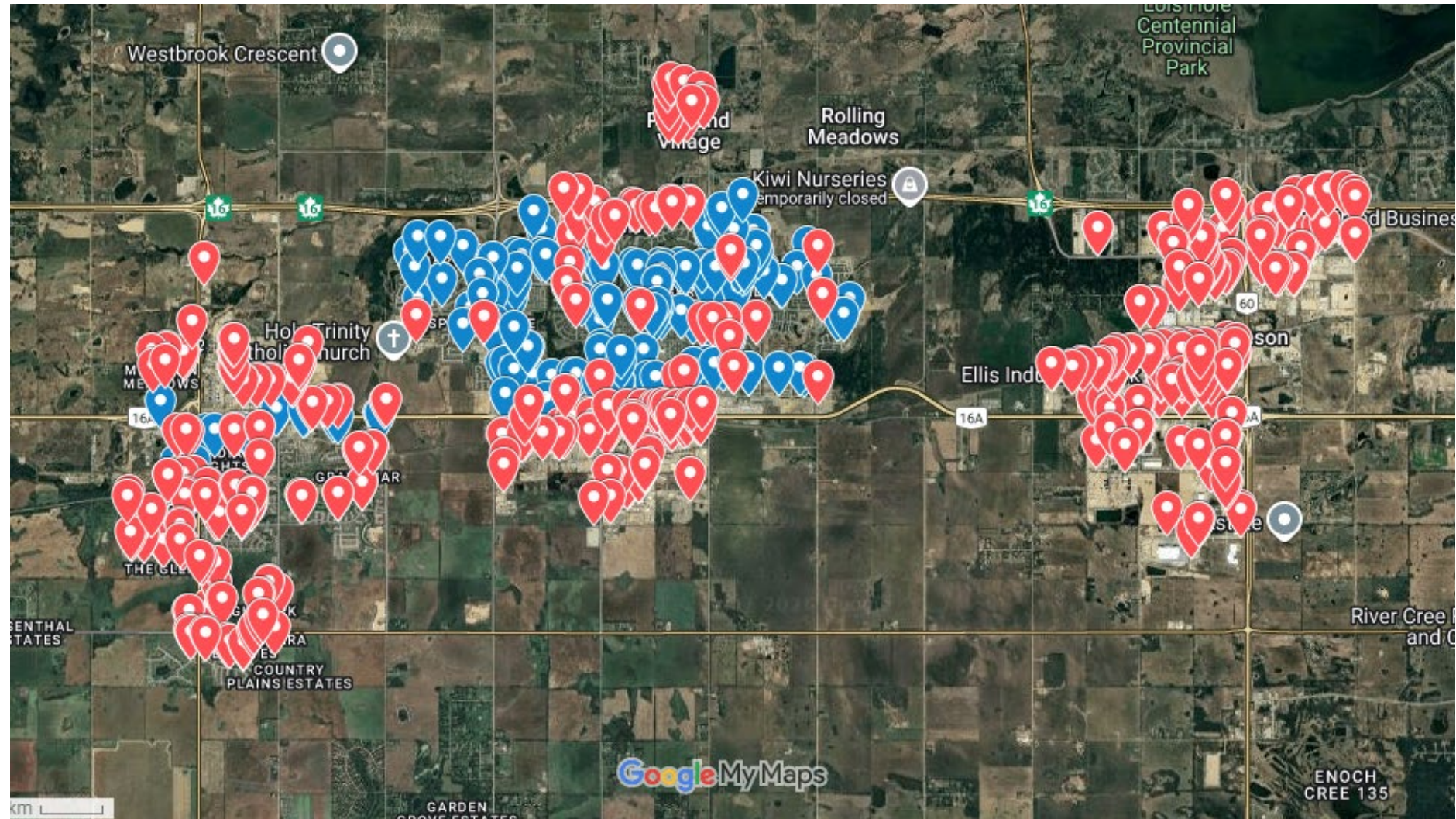
	<u>Rider Origin Percentage 2016 to 2020</u>
City of Spruce Grove	73.7 %
Town of Stony Plain	13.8 %
Parkland County	12.5 %
	100 %



Tri-Region On-Demand Local Transit Service

- The On-Demand Local Transit Service operates between Acheson, Parkland Village, Spruce Grove and Stony Plain.
- For Acheson and Parkland Village, On-Demand service operates between 5:00 AM and 9:00 AM and 2:15 PM to 6:15 PM Monday to Friday.
- For Spruce Grove & Stony Plain, On-Demand service operates between 5:00 AM to 7:00 PM Monday to Friday and between 8:00 AM and 10:00 PM on Saturdays.
- Parkland County and Stony Plain cost share the On-Demand Local Transit expenses based on level of service hours.
- Riders can book rides on the Book My Bus App up to one week in advance. There are over 500 virtual stop locations.

Tri-Region On-Demand Local Transit Service




Tri-Region On-Demand Local Transit Service

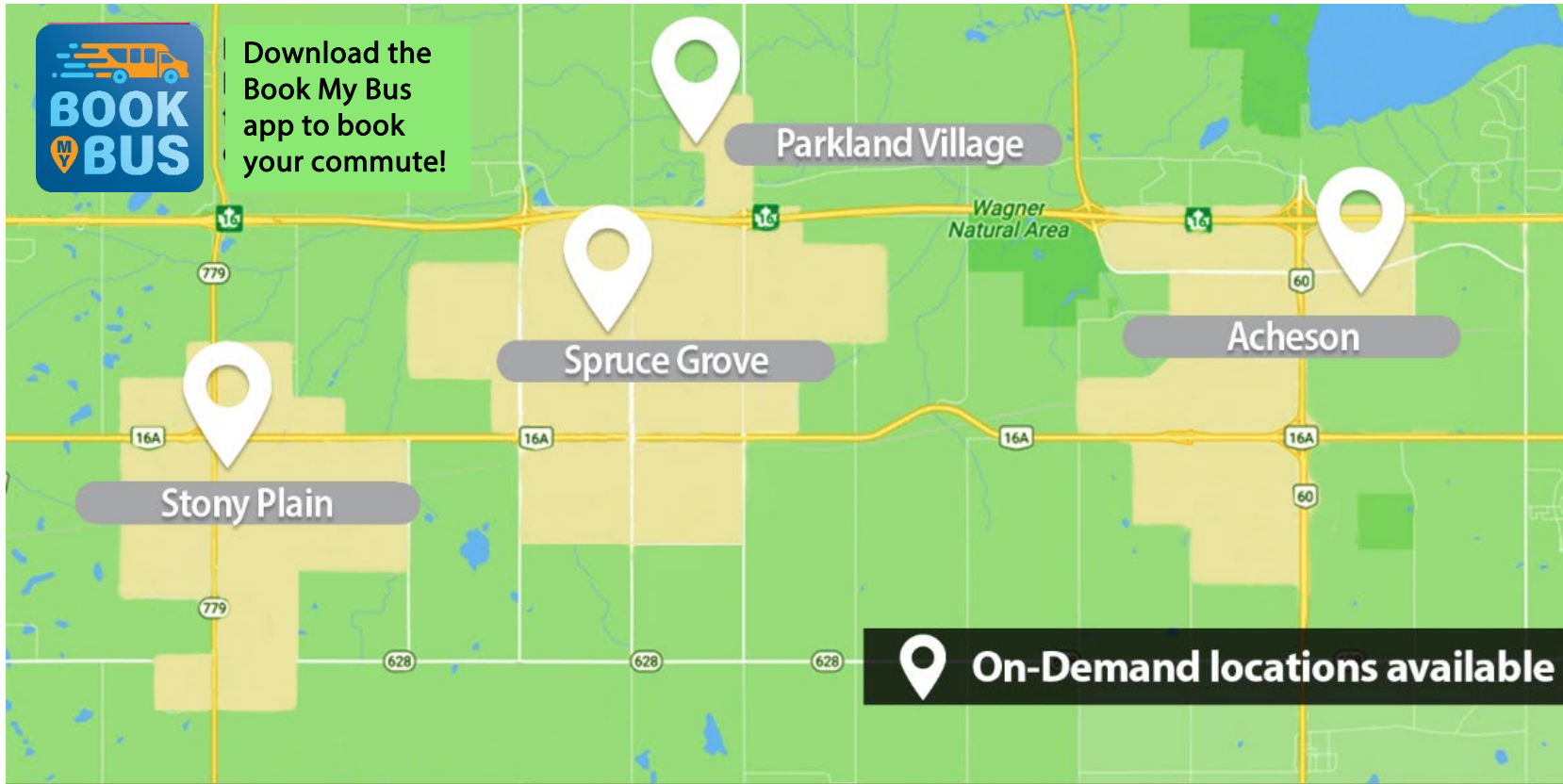
- In 2025 Acheson ridership averaged 9 return trips per day (7 to 11 return trips per day), compared to an average of 4 return trips per day in 2023.
- In 2025 Parkland Village ridership averaged 4 return trips per day (2 to 5 return trips per day), which is identical to the 2023 ridership.








Download the
Book My Bus
app to book
your commute!





On-Demand Transit


- Pick-up & drop-off sites nearly every 200 metres
- Over 500 locations
- \$3 local service trip
- \$65 monthly Local Service Pass


Travelling around the region has never been easier!











Transit Fares

- Local adult fare rate is \$3.00 per trip, or \$65.00 for an adult monthly pass.
- Commuter adult fare rate is \$6.25 per trip, or \$135.00 for an adult monthly pass.
- Arc system (electronic fare payment system), was implemented in late 2022. The tap on tap off system allows commuters to reload funds online, at vending machines, over the phone, or in person.
- In 2024 paper transit fare products were discontinued, riders pay solely electronically with Arc.
- Fare caps ensure riders do not pay more than the daily or monthly cost and once you reach the cap you ride for free.





Transit Budget 2026

	2026 Budget	2025 Actual	2024 Actual
Commuter Transit Ticket Sales	\$ 78,000	\$ 82,661	\$ 64,496
On-Demand Transit Ticket Sales	\$ 16,000	\$ 18,560	\$ 16,654
Total Revenue	\$ 94,000	\$ 101,221	\$ 81,150
On-Demand Transit Service (PC Share)	\$ 228,400	\$ 220,501	\$ 206,503
Commuter Transit Service (PC Share)	\$ 308,600	\$ 241,450	\$ 232,641
Other	\$ 52,200	\$ 34,732	\$ 39,896
Total Expenses	\$ 589,200	\$ 496,683	\$ 479,040
Net Transit	\$ 495,200	\$ 395,462	\$ 397,890



Current Tri-Region Transit Infrastructure

- Buses:
 - Parkland County – 2 On-Demand buses (14 passenger 1 wheelchair),
 - Stony Plain – 2 On-Demand buses,
 - Spruce Grove – 6 Commuter buses (38 passenger), 4 On-Demand,
- Spruce Grove Bus Garage – 110 Manitoba Court – Houses all On-Demand buses, Spruce Grove Transit offices, offices for Keolis (contractor) and Accessible Transit Services (ATS).
- Spruce Grove Transit Centre –600 stall (no cost) Park & Ride – 50 Westwind Drive adjacent to Heavy Metal Place



Regional Transit Collaboration

- Since the dissolving of the Edmonton Metropolitan Transit Services Commission Board on May 31, 2023, the following Edmonton Regional Transit Partners have continued to meet.

- City of Beaumont
- City of Edmonton
- City of Fort Saskatchewan
- City of Leduc
- City of Spruce Grove
- City of St. Albert
- Town of Devon
- Town of Stony Plain
- Parkland County
- Strathcona County
- Leduc County



Regional Transit Collaboration

The Regional Transit Group signed a Framework for Regional Transit collaboration. The Framework discusses:

- Governance,
- Pillars for regional collaboration,
- Timing of short, medium, long term goals, and
- Next steps.

Some recent collaboration initiatives, aimed at improving transit services in the region are:

- Coordinating capital priorities to leverage funding such as the current Canada Public Transit Fund (CPTF) annual \$3 billion per year beginning 2026-2027.
- Creating convenient reliable seamless transit system to support mobility, ridership growth and economic investment in the region,
- Developing efficiencies,
- Adopting the ARC electronic payment system across the regional,
- Working towards a regional transit fares,
- Creating a shared information platform.



Future Tri-Region Transit

- Parkland County, the City of Spruce Grove and the Town of Stony Plain meet regularly (bi-monthly) to discuss:
 - Operations and accommodating future ridership growth on both the Commuter and On-Demand Local Transit Services, and
 - To discuss greater regional transit collaboration initiatives.

QUESTIONS ?



