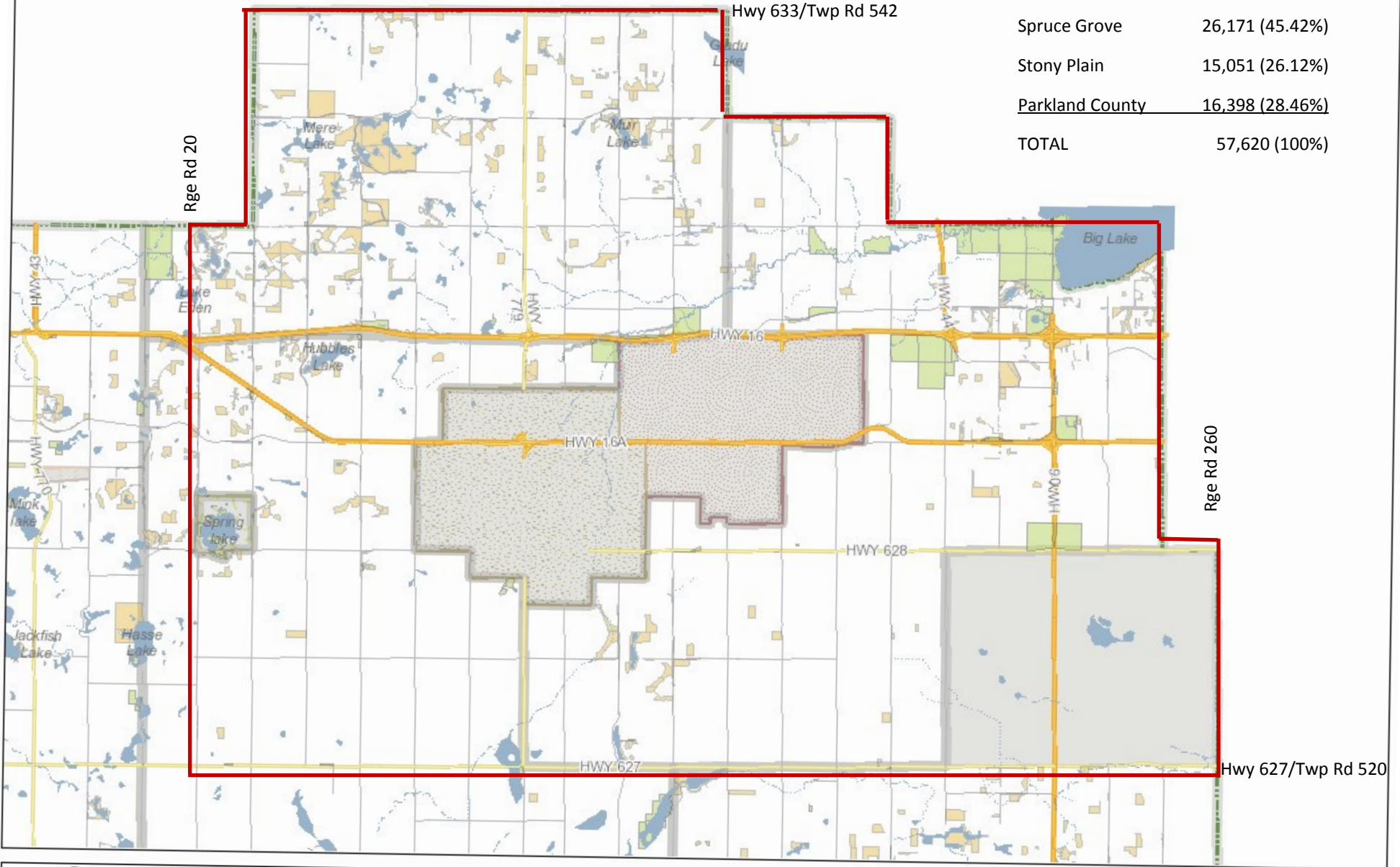


# Schedule "A"

## Tri-Municipal Market Area (TLC MOU)

Spruce Grove	26,171 (45.42%)
Stony Plain	15,051 (26.12%)
<u>Parkland County</u>	<u>16,398 (28.46%)</u>
<b>TOTAL</b>	<b>57,620 (100%)</b>



## Parkland County



**Disclaimer:**

Parkland County offers this information in good faith, but makes warranty with regard to the correctness, and accuracy of the data.

**Created by**

**Date**

Tue Oct 28, 2014 11:01AM

**Department**

**Scale**

1:132474