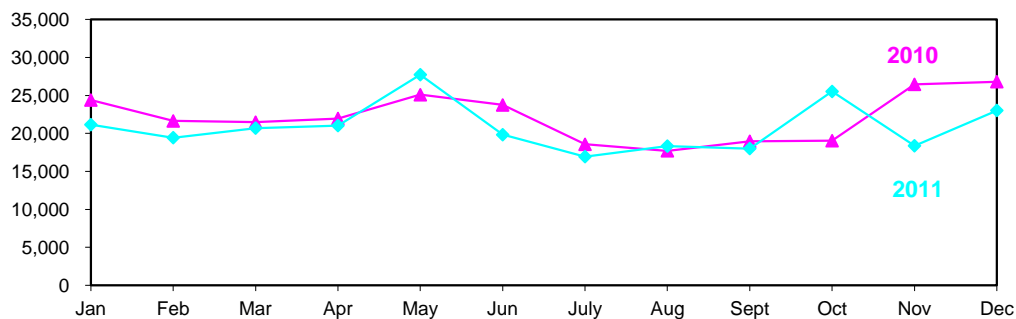


PARKLAND COUNTY
BLUECROSS BENEFIT FINANCIAL STATEMENT
FOR 12 MONTHS ENDING DECEMBER 2011

Benefit	Premiums	Claims	Surplus/ (Deficit)	Loss Ratio
EHC/Vision Amounts Pooled	286,167.86	250,030.53 (12,471.39)	36,137.33 12,471.39	87%
Dental	182,698.37	176,344.95	6,353.42	97%
Total	<u>468,866.23</u>	<u>413,904.09</u>	<u>54,962.14</u>	88%
			<u>54,962.14</u>	

EHC/VISION CLAIMS (146 employees enrolled)



DENTAL CLAIMS (148 employees enrolled)

