



ENFORCEMENT SERVICES
COUNCIL BUDGET PRESENTATION

NOVEMBER 19, 2024

Agriculture, Community + Protective Services Division



**Community
Services**



**Agriculture +
Environmental
Services**



Fire Services



**Enforcement
Services**

DEPARTMENT OVERVIEW



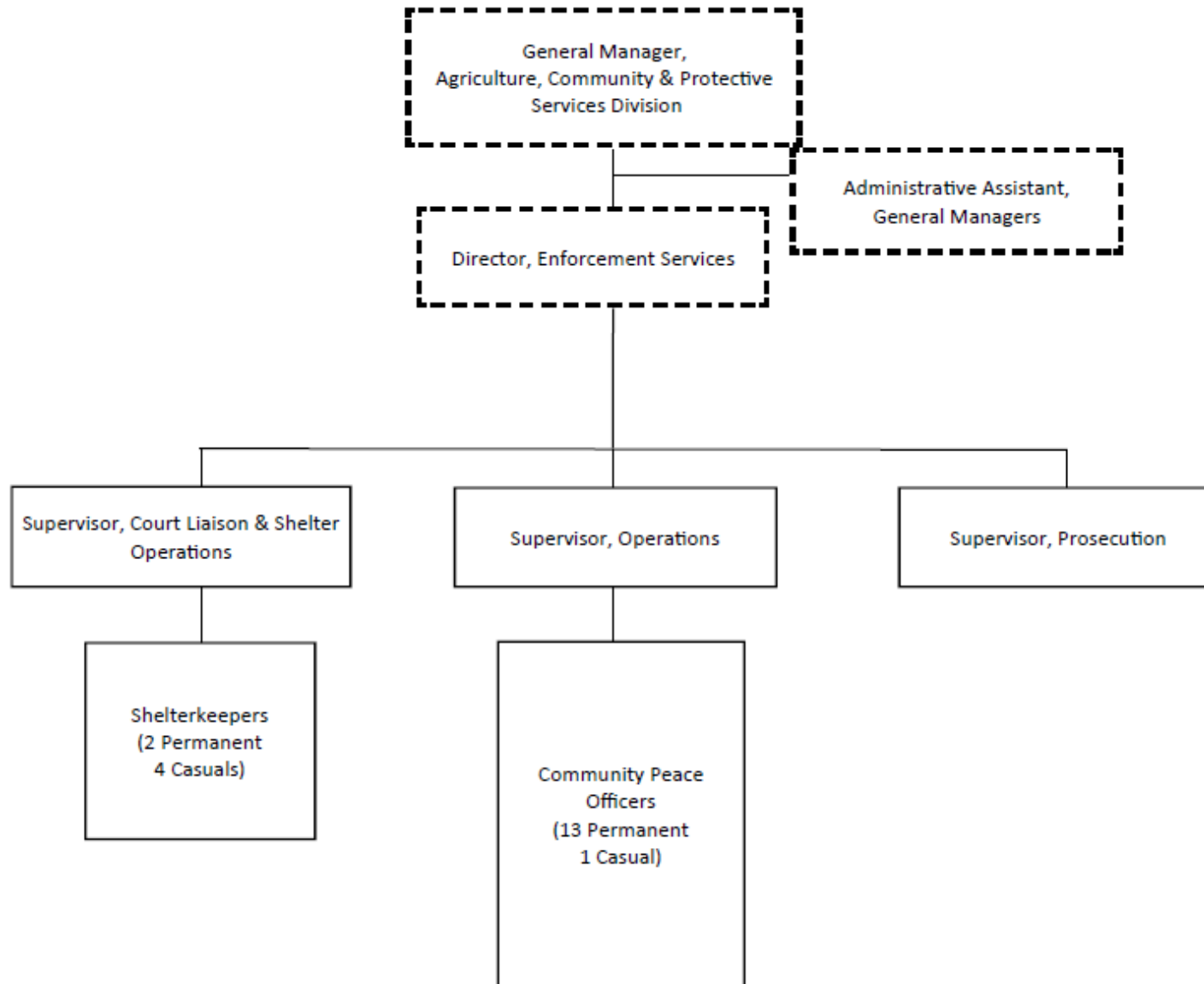
ENFORCEMENT SERVICES

-
- Enforcement of potential municipal bylaw and provincial statute and regulation violations
 - Ensuring public safety through a balance of education and enforcement
 - Providing high visibility patrols to support residents and act as a deterrent to crime
 - Operation of the Parkland County Animal Shelter
 - Facilitating educational programs in local classrooms and at public events (ex: CPTED)
 - Collaboration with various law enforcement agencies to ensure a consistent standard of service
 - Contracted services adjacent municipalities + regional partners



ENFORCEMENT SERVICES

ORGANIZATIONAL CHART



STRATEGIC ALIGNMENT



**Complete
Communities**



**Strategic
Economic
Diversification**



**Respected
Environment +
Agriculture**



**Responsible
Leadership**



FUTURE PLANNING



OPPORTUNITIES

- Empower Peace Officers to make positive and effective decisions in their interactions with the public
- Educate residents and businesses on how to prevent criminal activity in and around their properties
- Demonstrate an Enforcement Services presence in all areas of the County
- Leverage continued success of the Traffic Initiative
- Act as common mediator to bring local Social Media Groups, Crime Watch Groups, Citizens on Patrol, RCMP, and residents together to promote crime prevention and foster community spirit
- Replace current In Car Camera and Body Worn Camera system



ENFORCEMENT SERVICES

FUTURE PLANNING

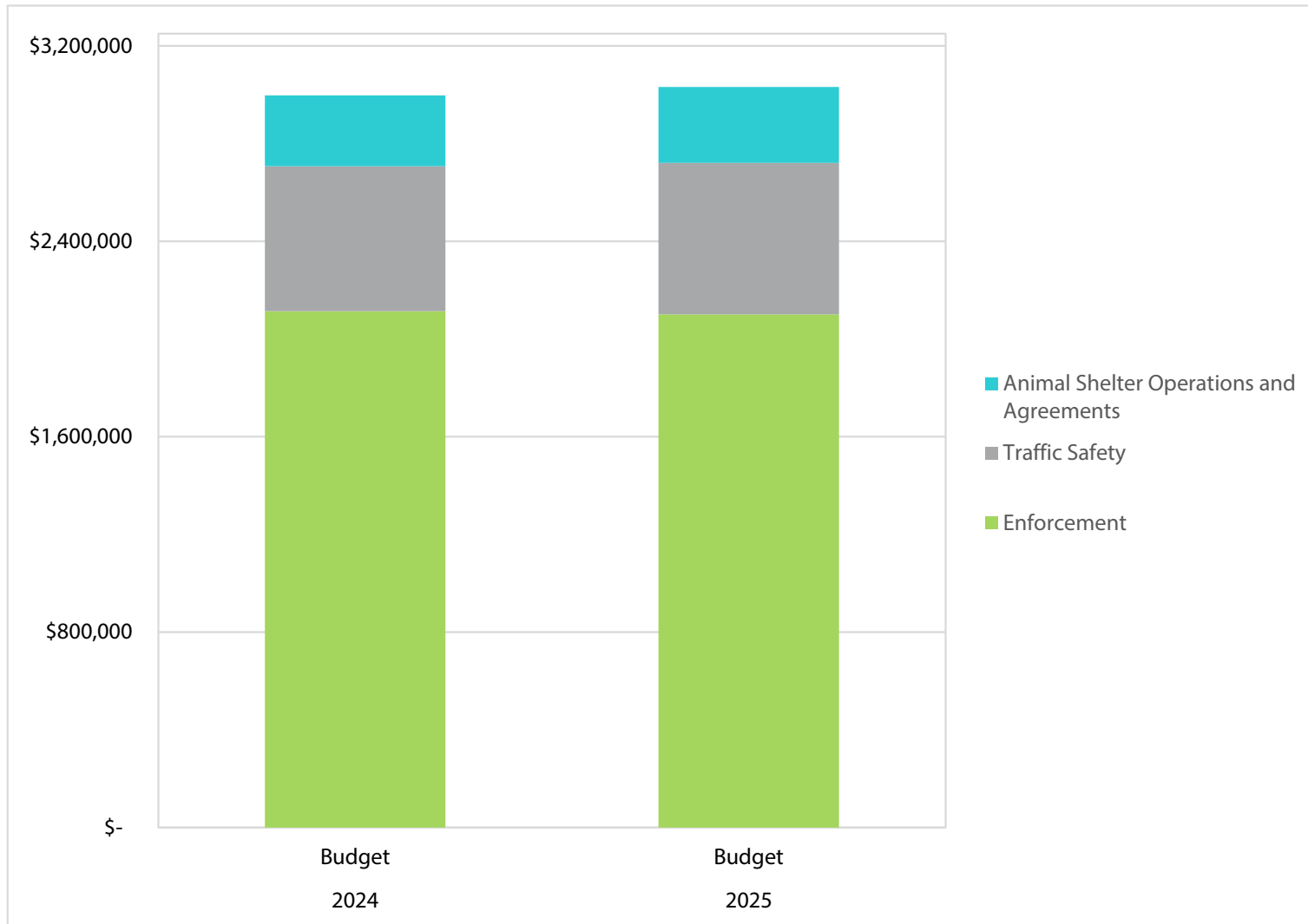


POTENTIAL RISKS

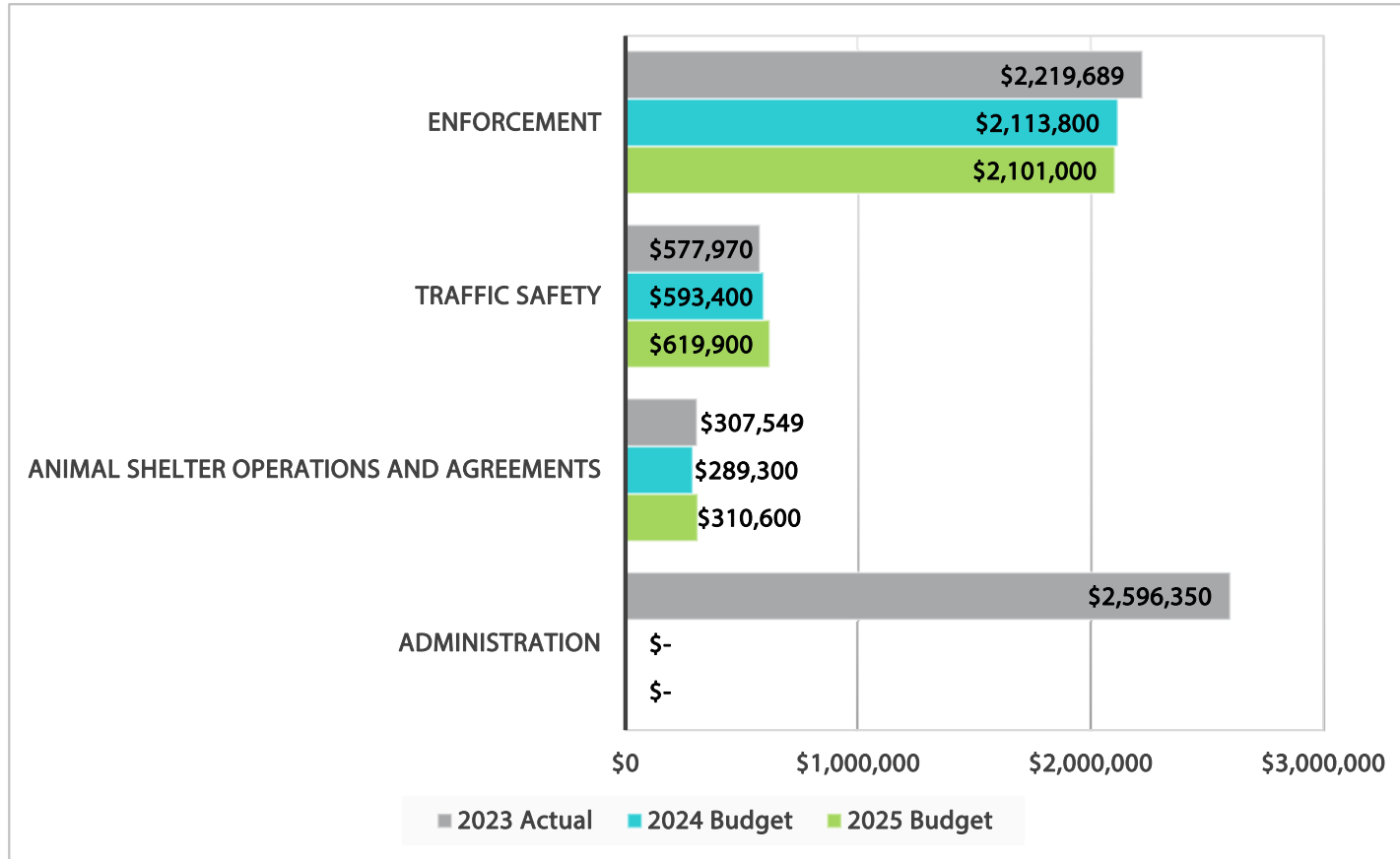
- Continued criminal activity in rural areas
- Disruptive and negative resident activities
- Potential of staff turnover
- Reallocation of Peace Officers to assist in emergency operations impacts operations
- Increasing seasonal patrol volumes in Wabamun
- If current trend continues Animal Shelter size and staffing not sufficient
- Social media inflaming false allegations



SUMMARY OF 2024/2025 BUDGETED PROGRAM EXPENDITURES



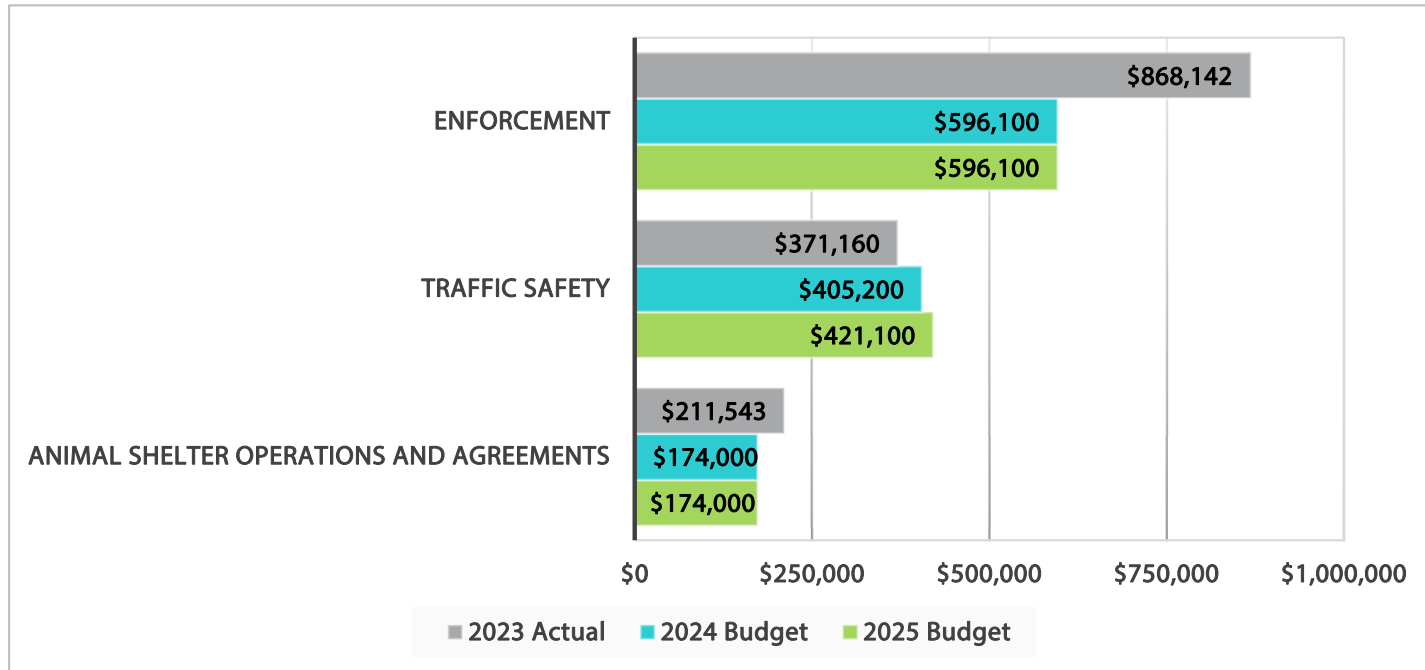
2025 PROGRAM BUDGET EXPENDITURE



OVERALL COMMENTS

- No significant variances

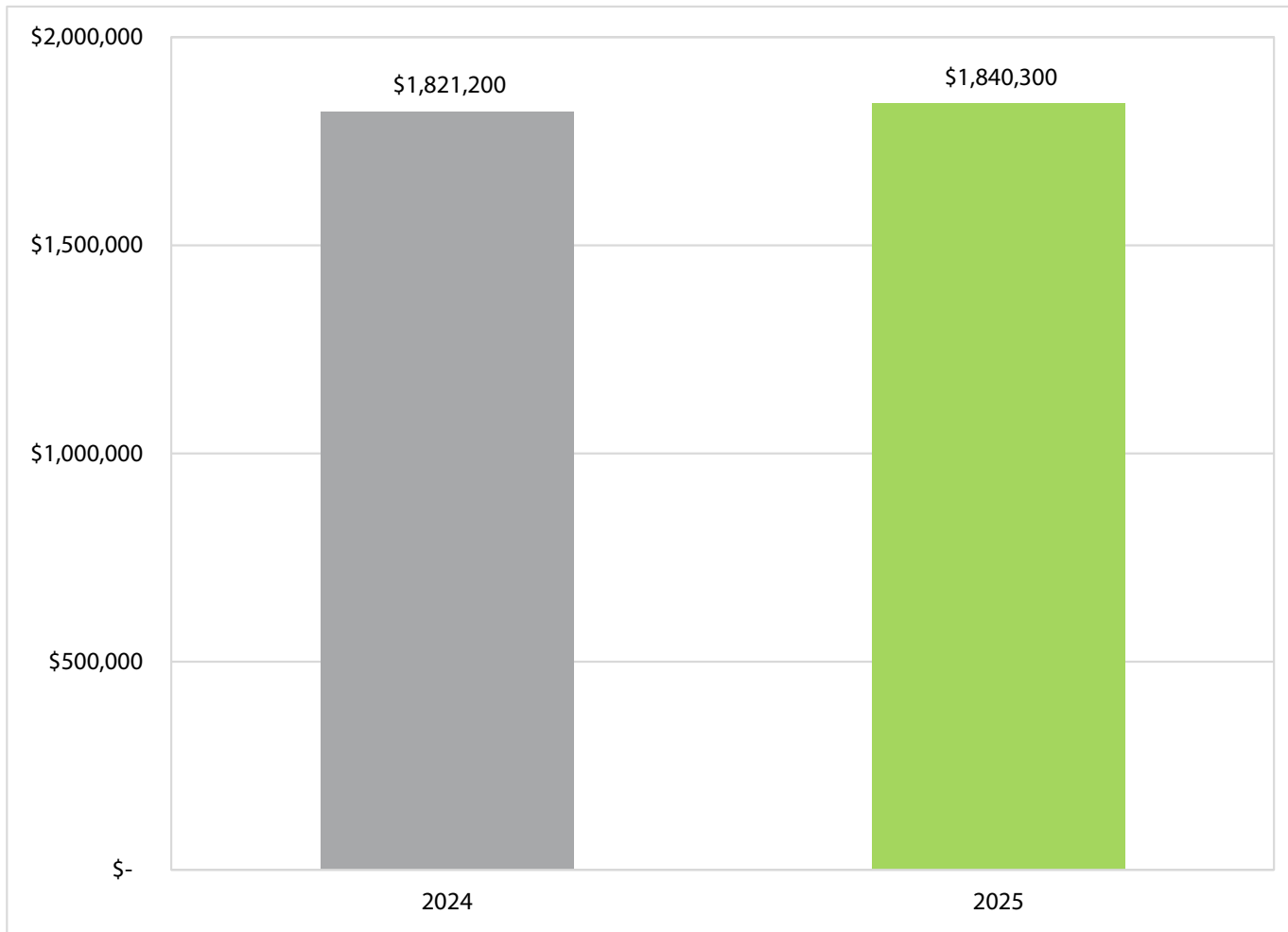
2025 PROGRAM BUDGET REVENUE



OVERALL COMMENTS

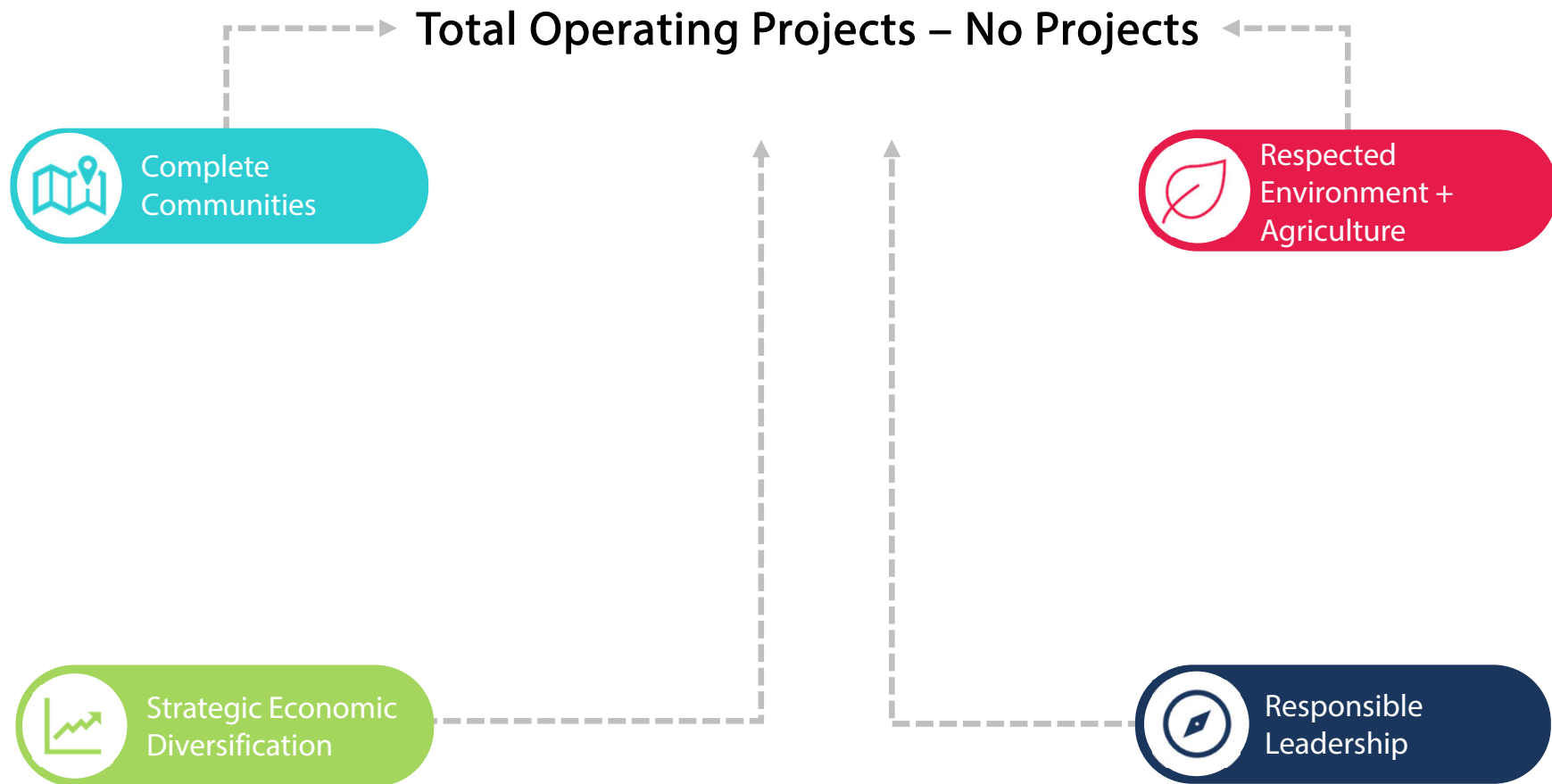
- No significant variances

OPERATING PROGRAM CHANGE

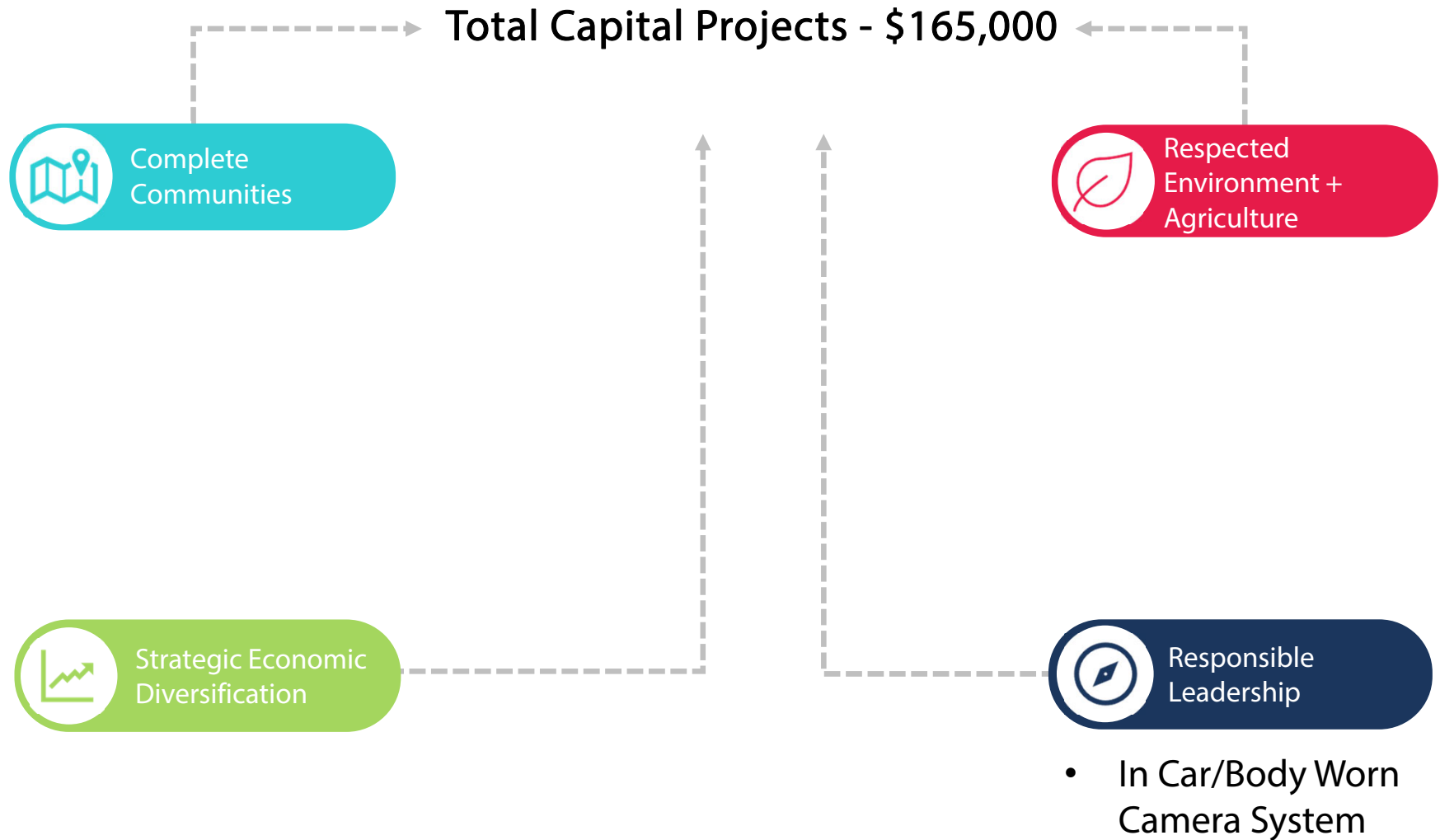


Net Base Change = \$19,100

OPERATING PROJECTS - 2025



CAPITAL PROJECTS - 2025



Questions?

