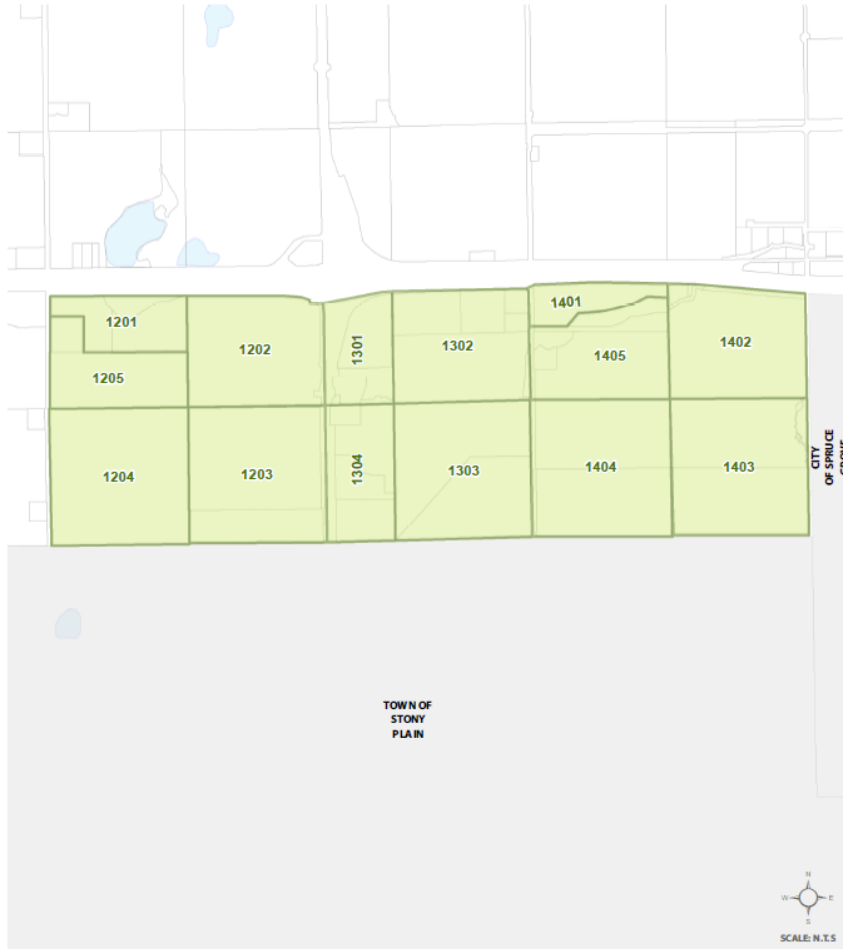


# Appendix 1 – Benefitting Areas Map

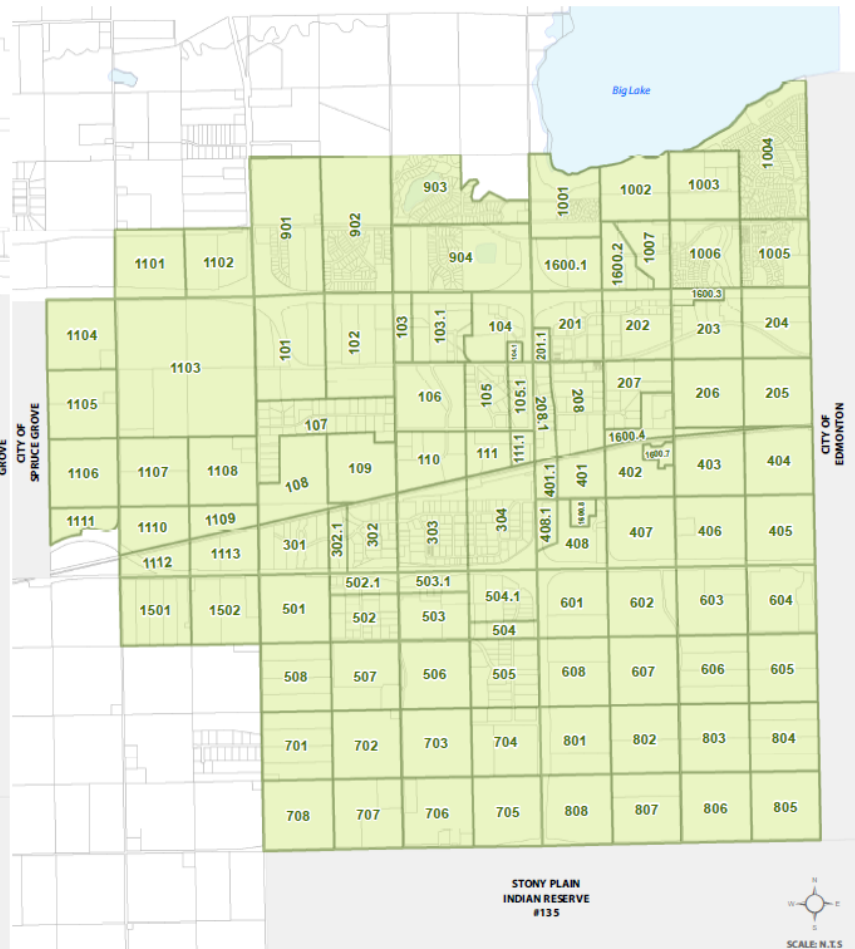
## Off-Site Levy Projects

## Off-Site Levy Projects

Schedule B: Fifth Meridian Benefitting Areas



Schedule A: Acheson/Big Lake Benefitting Areas



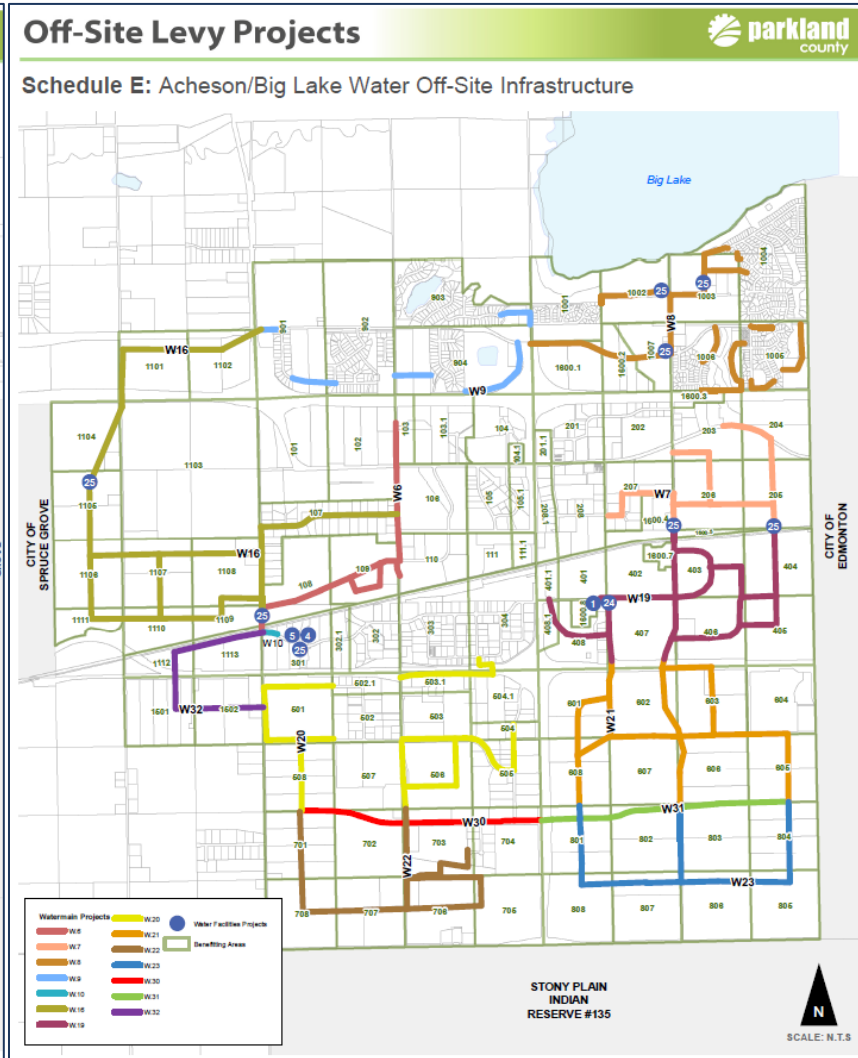
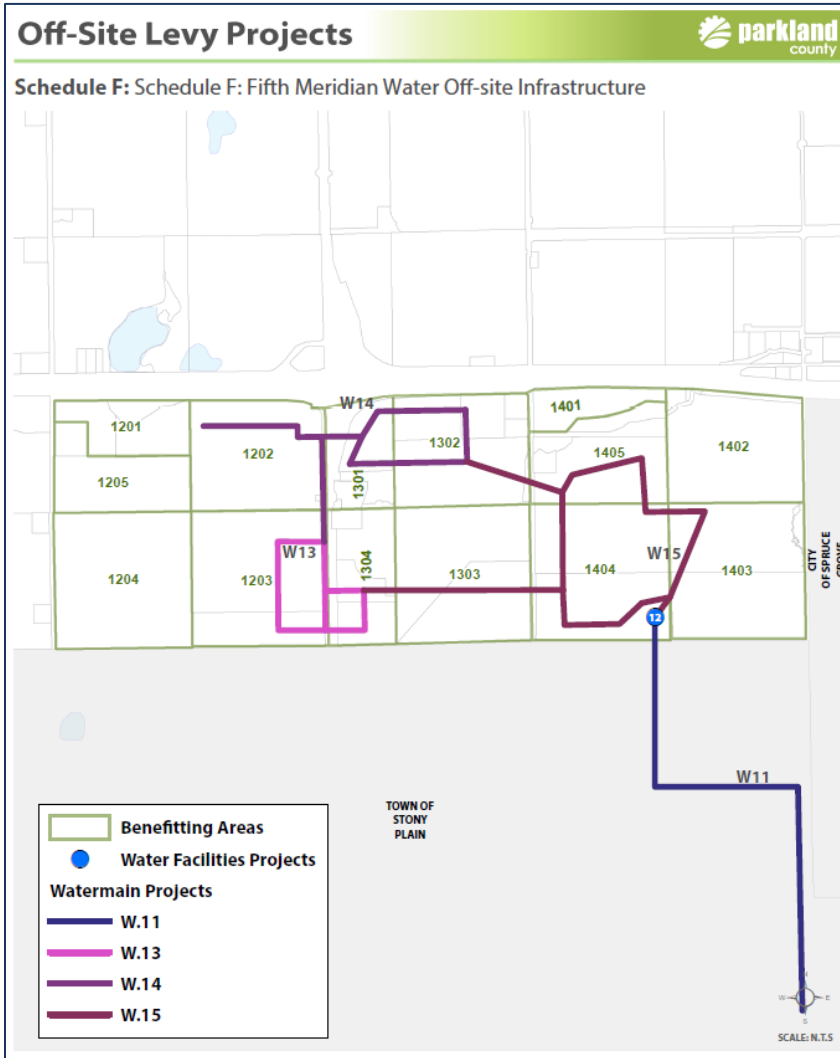
## Appendix 2 – Development Area Summary

Benefiting Area	Development Area Location	Land Use	Gross Area (ha.)	Reserve & Highway/Arterial/C collector Roadways (ha.)	Net Development Area (ha.)	Area Developed to Date (ha.)	Not Available for Development	Net Development Area (ha.)
101.0	Acheson Zone 1 (W1/2 of 8-53-26)	Commercial / Industrial	16.08	0.00	16.08	0.00	0.00	16.08
102.0	Acheson Zone 1 (E1/2 of 8-53-26)	Commercial / Industrial	54.86	0.70	54.16	0.00	0.00	54.16
103.0	Acheson Zone 1 (NW9-53-26)	Commercial / Industrial	8.11	0.10	8.01	0.00	0.00	8.01
103.1	Acheson Zone 1 (NW9-53-26)	Commercial / Industrial	22.04	0.20	21.84	0.00	0.00	21.84
104.0	Acheson Zone 1 (NE9-53-26)	Commercial / Industrial	0.00	0.00	0.00	0.00	0.00	0.00
104.1	Acheson Zone 1 (NE9-53-26)	Commercial / Industrial	4.05	0.00	4.05	0.00	0.00	4.05
105.0	Acheson Zone 1 (SE9-53-26)	Commercial / Industrial	12.70	0.12	12.58	12.58	0.00	0.00
105.1	Acheson Zone 1 (SE9-53-26)	Commercial / Industrial	2.67	0.12	2.55	2.55	0.00	0.00
106.0	Acheson Zone 1 (SW9-53-26)	Commercial / Industrial	0.00	0.00	0.00	0.00	0.00	0.00
107.0	Acheson Zone 1 Osborne Acres et al	Residential	68.59	0.00	68.59	0.00	68.59	0.00
108.0	Acheson Zone 1 (W1/2 of 5-53-26) - North of Railway	Commercial / Industrial	65.08	30.09	34.99	0.00	0.00	34.99
109.0	Acheson Zone 1 (NE5-53-26)	Commercial / Industrial	59.41	22.89	36.52	11.90	0.00	24.62
110.0	Acheson Zone 1 (SW4-53-26)	Commercial / Industrial	0.00	0.00	0.00	0.00	0.00	0.00
111.0	Acheson Zone 1 (SE4-53-26)	Commercial / Industrial	15.65	0.00	15.65	5.25	0.00	10.40
111.1	Acheson Zone 1 (SE4-53-26)	Commercial / Industrial	8.51	0.55	7.96	0.00	0.00	7.96
201.0	Acheson Zone 2 (NW10-53-26)	Commercial / Industrial	0.00	0.00	0.00	0.00	0.00	0.00
201.1	Acheson Zone 2 (NW10-53-26)	Commercial / Industrial	0.00	0.00	0.00	0.00	0.00	0.00
202.0	Acheson Zone 2 (NE10-53-26)	Commercial / Industrial	0.00	0.00	0.00	0.00	0.00	0.00
203.0	Acheson Zone 2 (Pt. NW11-53-26)	Commercial / Industrial	51.12	0.20	50.92	0.00	0.00	50.92
204.0	Acheson Zone 2 (NE11-53-26)	Commercial / Industrial	52.89	0.56	52.33	0.00	0.00	52.33
205.0	Acheson Zone 2 (SE11-53-26)	Commercial / Industrial	64.00	1.20	62.80	0.00	0.00	62.80
206.0	Acheson Zone 2 (SW11-53-26)	Commercial / Industrial	64.60	0.55	64.05	0.00	0.00	64.05
207.0	Acheson Zone 2 (Pt. SE10-53-26)	Commercial / Industrial	23.02	1.07	21.95	18.23	0.00	3.72
208.0	Acheson Zone 2 (SW10-53-26)	Commercial / Industrial	4.00	0.00	4.00	0.00	0.00	4.00
208.1	Acheson Zone 2 (SW10-53-26)	Commercial / Industrial	7.30	1.99	5.31	0.00	0.00	5.31
301.0	Acheson Zone 3 (SW5-53-26) - South of Railway	Commercial / Industrial	8.20	1.51	6.69	0.00	0.00	6.69
302.0	Acheson Zone 3 (SE5-53-26)	Commercial / Industrial	0.00	0.00	0.00	0.00	0.00	0.00
302.1	Acheson Zone 3 (SE5-53-26)	Commercial / Industrial	0.00	0.00	0.00	0.00	0.00	0.00
303.0	Acheson Zone 3 (SW4-53-26)	Commercial / Industrial	0.00	0.00	0.00	0.00	0.00	0.00
304.0	Acheson Zone 3 (SE4-53-26)	Commercial / Industrial	0.00	0.00	0.00	0.00	0.00	0.00
401.0	Acheson Zone 4 (NW3-53-26) - South of Railway	Commercial / Industrial	0.00	0.00	0.00	0.00	0.00	0.00
401.1	Acheson Zone 4 (NW3-53-26) - South of Railway	Commercial / Industrial	0.00	0.00	0.00	0.00	0.00	0.00
402.0	Acheson Zone 4 (NE3-53-26) - South of Railway	Commercial / Industrial	41.64	1.61	40.03	0.00	0.00	40.03
403.0	Acheson Zone 4 (NW2-53-26) - South of Railway	Commercial / Industrial	59.54	0.65	58.89	0.00	0.00	58.89
404.0	Acheson Zone 4 (NE2-53-26) - South of Railway	Commercial / Industrial	60.27	3.01	57.26	0.00	0.00	57.26
405.0	Acheson Zone 4 (SE2-53-26)	Commercial / Industrial	61.70	0.27	61.43	0.00	0.00	61.43
406.0	Acheson Zone 4 (SW2-53-26)	Commercial / Industrial	59.26	5.35	53.91	0.00	0.00	53.91
407.0	Acheson Zone 4 (SE3-53-26)	Commercial / Industrial	56.89	5.45	51.44	0.00	0.00	51.44
408.0	Acheson Zone 4 (SW3-53-26)	Commercial / Industrial	30.13	16.20	13.93	0.00	0.00	13.93
408.1	Acheson Zone 4 (SW3-53-26)	Commercial / Industrial	0.00	0.00	0.00	0.00	0.00	0.00

Benefiting Area	Development Area Location	Land Use	Gross Area (ha.)	Reserve & Highway/Arterial/Collector Roadways (ha.)	Net Development Area (ha.)	Area Developed to Date (ha.)	Not Available for Development	Net Development Area (ha.)
501.0	Acheson Zone 5 (NW32-52-26)	Commercial / Industrial	63.26	1.57	61.69	0.00	0.00	61.69
502.0	Acheson Zone 5 (NE32-52-26)	Commercial / Industrial	4.05	0.00	4.05	4.05	0.00	0.00
502.1	Acheson Zone 5 (NE32-52-26)	Commercial / Industrial	4.04	0.00	4.04	4.04	0.00	0.00
503.0	Acheson Zone 5 (NW33-52-26)	Commercial / Industrial	34.17	0.00	34.17	34.17	0.00	0.00
503.1	Acheson Zone 5 (NW33-52-26)	Commercial / Industrial	0.00	0.00	0.00	0.00	0.00	0.00
504.0	Acheson Zone 5 (NE33-52-26)	Commercial / Industrial	18.65	0.00	18.65	13.59	0.00	5.06
504.1	Acheson Zone 5 (NE33-52-26)	Commercial / Industrial	33.42	0.00	33.42	23.40	0.00	10.02
505.0	Acheson Zone 5 (SE33-52-26)	Commercial / Industrial	64.14	9.75	54.39	54.39	0.00	0.00
506.0	Acheson Zone 5 (SW33-52-26)	Commercial / Industrial	61.97	1.89	60.08	0.00	0.00	60.08
507.0	Acheson Zone 5 (SE32-52-26)	Commercial / Industrial	0.00	0.00	0.00	0.00	0.00	0.00
508.0	Acheson Zone 5 (SW32-52-26)	Commercial / Industrial	64.70	0.40	64.30	0.00	0.00	64.30
601.0	Acheson Zone 6 (NW34-52-26)	Commercial / Industrial	53.54	0.00	53.54	0.00	0.00	53.54
602.0	Acheson Zone 6 (NE34-52-26)	Commercial / Industrial	60.23	5.79	54.44	0.00	0.00	54.44
603.0	Acheson Zone 6 (NW35-52-26)	Commercial / Industrial	62.30	6.92	55.38	0.00	0.00	55.38
604.0	Acheson Zone 6 (NE35-52-26)	Commercial / Industrial	53.11	0.56	52.55	0.00	46.66	5.89
605.0	Acheson Zone 6 (SE35-52-26)	Commercial / Industrial	64.75	1.40	63.35	0.00	0.00	63.35
606.0	Acheson Zone 6 (SW35-52-26)	Commercial / Industrial	63.88	0.16	63.72	0.00	0.00	63.72
607.0	Acheson Zone 6 (SE34-52-26)	Commercial / Industrial	64.72	1.11	63.61	0.00	63.61	0.00
608.0	Acheson Zone 6 (SW34-52-26)	Commercial / Industrial	57.14	7.71	48.53	0.00	0.00	48.53
701.0	Acheson Zone 7 (NW29-52-26)	Commercial / Industrial	64.75	15.42	49.32	0.00	0.00	49.32
702.0	Acheson Zone 7 (NE29-52-26)	Commercial / Industrial	64.34	4.56	59.77	0.00	0.00	59.77
703.0	Acheson Zone 7 (NW28-52-26)	Commercial / Industrial	64.68	3.28	61.40	61.40	0.00	0.00
704.0	Acheson Zone 7 (NE28-52-26)	Commercial / Industrial	61.73	3.71	58.02	58.02	0.00	0.00
705.0	Acheson Zone 7 (SE28-52-26)	Commercial / Industrial	61.46	27.39	34.07	0.00	0.00	34.07
706.0	Acheson Zone 7 (SW28-52-26)	Commercial / Industrial	64.01	17.84	46.17	0.00	0.00	46.17
707.0	Acheson Zone 7 (SE29-52-26)	Commercial / Industrial	64.23	1.54	62.69	0.00	0.00	62.69
708.0	Acheson Zone 7 (SW29-52-26)	Commercial / Industrial	64.79	2.42	62.37	0.00	0.00	62.37
801.0	Acheson Zone 8 (NW27-52-26)	Commercial / Industrial	56.85	3.13	53.72	0.00	0.00	53.72
802.0	Acheson Zone 8 (NE27-52-26)	Commercial / Industrial	63.95	4.60	59.35	0.00	0.00	59.35
803.0	Acheson Zone 8 (NW26-52-26)	Commercial / Industrial	64.75	3.23	61.52	0.00	0.00	61.52
804.0	Acheson Zone 8 (NE26-52-26)	Commercial / Industrial	64.90	3.29	61.61	0.00	0.00	61.61
805.0	Acheson Zone 8 (SE26-52-26)	Commercial / Industrial	64.02	21.96	42.06	0.00	0.00	42.06
806.0	Acheson Zone 8 (SW26-52-26)	Commercial / Industrial	64.35	12.08	52.27	0.00	0.00	52.27
807.0	Acheson Zone 8 (SE27-52-26)	Commercial / Industrial	63.62	13.79	49.83	0.00	0.00	49.83
808.0	Acheson Zone 8 (SW27-52-26)	Commercial / Industrial	59.82	26.55	33.27	0.00	0.00	33.27
901.0	Big Lake West (W1/2 of 17-53-26)	Residential	93.56	25.92	67.64	0.00	0.00	67.64
902.0	Big Lake West (E1/2 of 17-53-26)	Residential	69.47	53.92	15.55	1.53	0.00	14.02
903.0	Big Lake West (N1/2 of 16-53-26)	Residential	8.41	0.84	7.56	0.00	0.00	7.56
904.0	Big Lake West (S1/2 of 16-53-26)	Residential	78.77	7.88	70.89	0.00	0.00	70.89

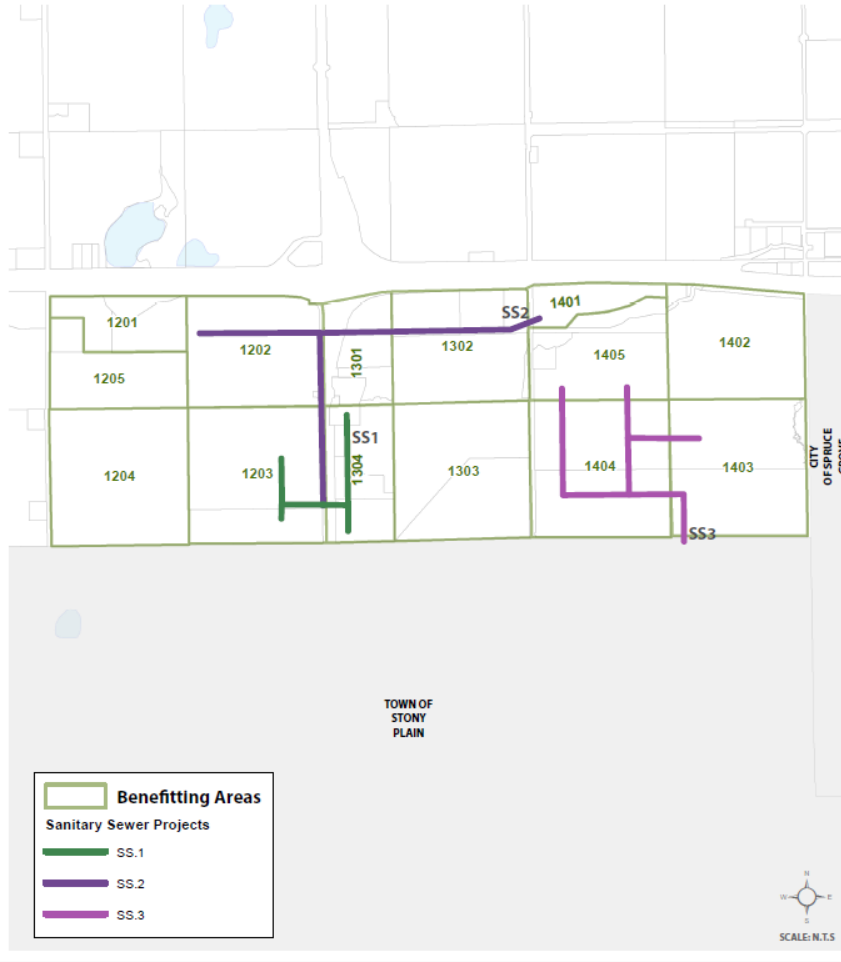
Benefiting Area	Development Area Location	Land Use	Gross Area (ha.)	Reserve & Highway/Arterial/Collector Roadways (ha.)	Net Development Area (ha.)	Area Developed to Date (ha.)	Not Available for Development	Net Development Area (ha.)
1001.0	Big Lake East (Pt. W1/2 of 15-53-26)	Residential	36.60	13.64	22.95	3.26	0.00	19.69
1002.0	Big Lake East (NE15-53-26)	Residential	55.69	22.84	32.85	0.00	0.00	32.85
1003.0	Big Lake East (NW14-53-26)	Residential	62.17	10.46	51.71	0.00	0.00	51.71
1004.0	Big Lake East (S1/2 of 23 & NE14-53-26)	Residential	0.00	0.00	0.00	0.00	0.00	0.00
1005.0	Big Lake East (SE14-53-26)	Residential	22.50	6.21	16.29	3.77	0.00	12.52
1006.0	Big Lake East (SW16-53-26)	Residential	24.42	2.96	21.46	7.62	0.00	13.84
1007.0	Big Lake East (Pt. SE15-53-26)	Residential	30.76	6.24	24.52	0.00	0.00	24.52
1101.0	Acheson West (SW18-53-26)	Commercial / Industrial	48.16	0.00	48.16	0.00	0.00	48.16
1102.0	Acheson West (SE18-53-26)	Commercial / Industrial	44.17	0.00	44.17	0.00	0.00	44.17
1103.0	Acheson West (Sec.7-53-26)	Commercial / Industrial	31.83	0.00	31.83	0.00	0.00	31.83
1104.0	Acheson West (NE12-53-27)	Commercial / Industrial	64.34	2.70	61.64	0.00	0.00	61.64
1105.0	Acheson West (SE12-53-27)	Commercial / Industrial	64.33	0.00	64.33	0.00	0.00	64.33
1106.0	Acheson West (NE1-53-27)	Commercial / Industrial	64.34	14.07	50.27	0.00	0.00	50.27
1107.0	Acheson West (NW6-53-26)	Commercial / Industrial	64.35	0.00	64.35	0.00	0.00	64.35
1108.0	Acheson West (NE6-53-26)	Commercial / Industrial	64.35	0.00	64.35	0.00	0.00	64.35
1109.0	Acheson West (SE6-53-26) - North of Railway	Commercial / Industrial	25.80	0.00	25.80	0.00	0.00	25.80
1110.0	Acheson West (SW6-53-26) - North of Railway	Commercial / Industrial	39.25	0.00	39.25	0.00	0.00	39.25
1111.0	Acheson West (SE1-53-27) - North of Railway	Commercial / Industrial	41.27	9.37	31.90	0.00	0.00	31.90
1112.0	Acheson West (SW6-53-26) - South of Railway	Commercial / Industrial	11.04	0.00	11.04	0.00	0.00	11.04
1113.0	Acheson West (SE6-53-26) - South of Railway	Commercial / Industrial	31.97	0.02	31.95	0.00	0.00	31.95
1201.0	Fifth Meridian (NW12-53-1) - North of Watercourse	Commercial / Industrial	20.74	3.92	16.82	0.00	0.00	16.82
1202.0	Fifth Meridian (NE12-53-1)	Commercial / Industrial	50.51	6.00	44.51	0.00	0.00	44.51
1203.0	Fifth Meridian (SE12-53-1)	Commercial / Industrial	62.52	1.60	60.92	0.00	0.00	60.92
1204.0	Fifth Meridian (SW12-53-1)	Residential	64.75	12.51	52.24	0.00	0.00	52.24
1205.0	Fifth Meridian (NW12-53-1) - South of Watercourse	Residential	30.45	11.54	18.90	0.00	0.00	18.90
1301.0	Fifth Meridian (NW12-53-28)	Commercial / Industrial	17.60	0.00	17.60	0.00	0.00	17.60
1302.0	Fifth Meridian (NE12-53-28)	Commercial / Industrial	51.75	3.62	48.13	0.00	0.00	48.13
1303.0	Fifth Meridian (SE12-53-28)	Commercial / Industrial	64.21	2.75	61.46	0.00	0.00	61.46
1304.0	Fifth Meridian (SW12-53-28)	Commercial / Industrial	27.66	0.00	27.66	0.00	0.00	27.66
1401.0	Fifth Meridian (NW7-53-27) - North of watercourse	Commercial / Industrial	14.44	0.00	14.44	0.00	0.00	14.44
1402.0	Fifth Meridian (NE7-53-27)	Residential	49.19	11.42	37.77	0.00	0.00	37.77
1403.0	Fifth Meridian (SE7-53-27)	Residential	64.75	28.33	36.42	0.00	0.00	36.42
1404.0	Fifth Meridian (SW7-53-27)	Residential	64.36	6.98	57.38	0.00	0.00	57.38
1405.0	Fifth Meridian (NW7-53-27) - South of watercourse	Residential	34.36	0.00	34.36	0.00	0.00	34.36
1501.0	Acheson West (NW31-52-26)	Commercial / Industrial	61.92	4.00	57.92	0.00	0.00	57.92
1502.0	Acheson West (NE31-52-26)	Commercial / Industrial	62.32	16.20	46.12	0.00	0.00	46.12
1600.1	Big Lake East (Lot 1 & 2, Plan 4149TR in SW15-53-26)	Residential	39.82	6.29	33.52	0.00	0.00	33.52
1600.2	Big Lake East (Pt. SE15-53-26)	Residential	30.45	3.67	26.78	0.00	0.00	26.78
1600.3	Acheson Zone 2 (Pt. NW11-53-26)	Commercial / Industrial	2.41	0.00	2.41	2.41	0.00	0.00
1600.4	Acheson Zone 2 (Pt. SE10-53-26 and Pt. NE3-53-26 N of Rail)	Commercial / Industrial	25.93	0.15	25.78	0.00	0.00	25.78
1600.5	Acheson Zone 2 (Pt. NW2-53-26 North of Rail)	Commercial / Industrial	5.06	0.00	5.06	0.00	0.00	5.06
1600.6	Acheson Zone 2 (Pt. NE2-53-26 North of Rail)	Commercial / Industrial	0.76	0.00	0.76	0.00	0.00	0.76
1600.7	Acheson Zone 4 (Plan 9624108 in NE3-53-26)	Commercial / Industrial	8.10	0.13	7.97	0.00	0.00	7.97
1600.8	Acheson Zone 4 (Lot 2, Plan 0722672 in SW3-53-26)	Commercial / Industrial	0.00	0.00	0.00	0.00	0.00	0.00
								<b>3659.64</b>

## Appendix 3 – Location of Infrastructure



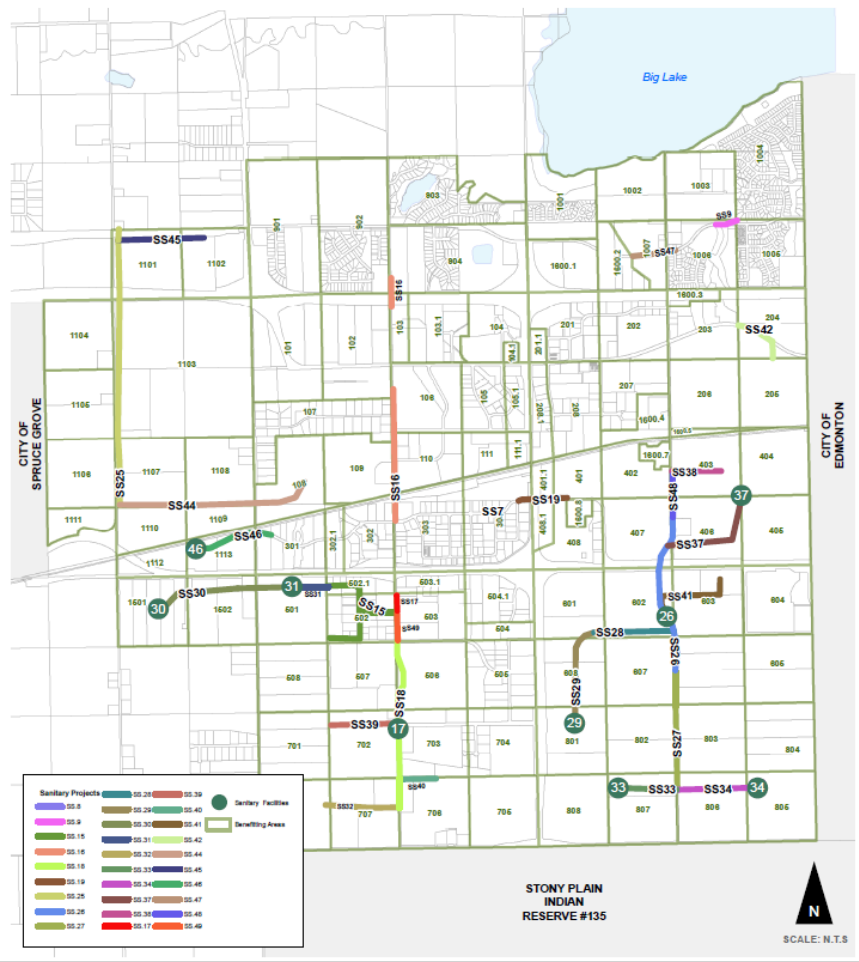
## Off-Site Levy Projects

### Schedule J: Fifth Meridian Sanitary Sewer Off-site Infrastructure



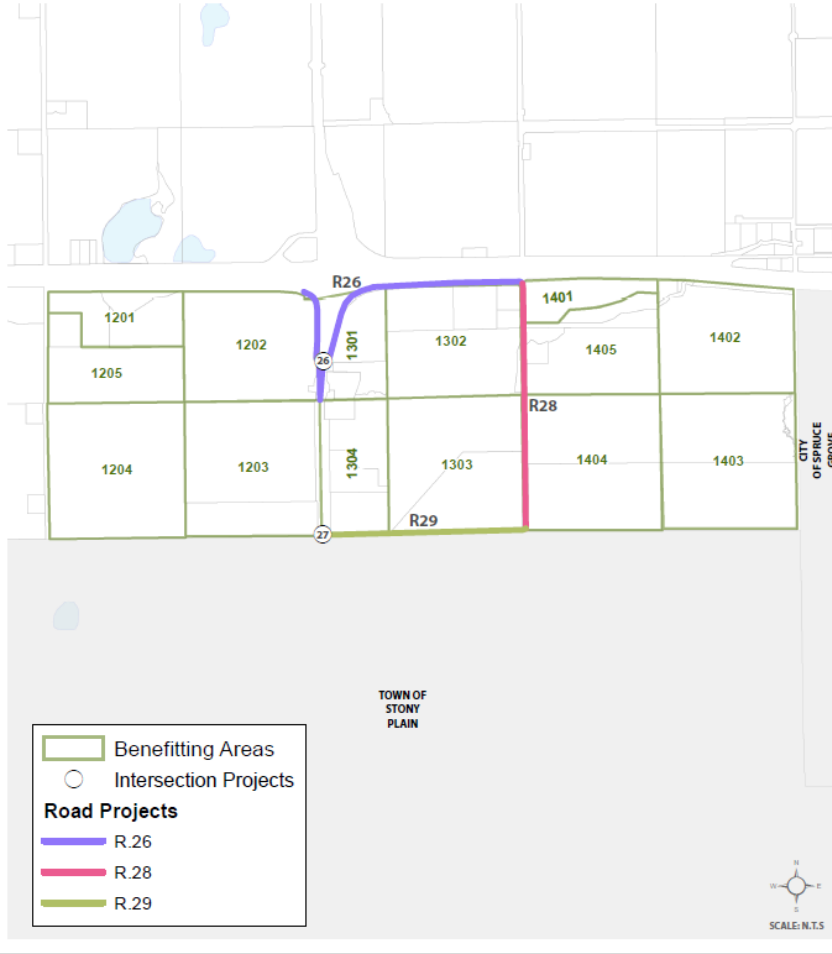
## Off-Site Levy Projects

### Schedule I: Acheson/Big Lake Sanitary Off-Site Infrastructure



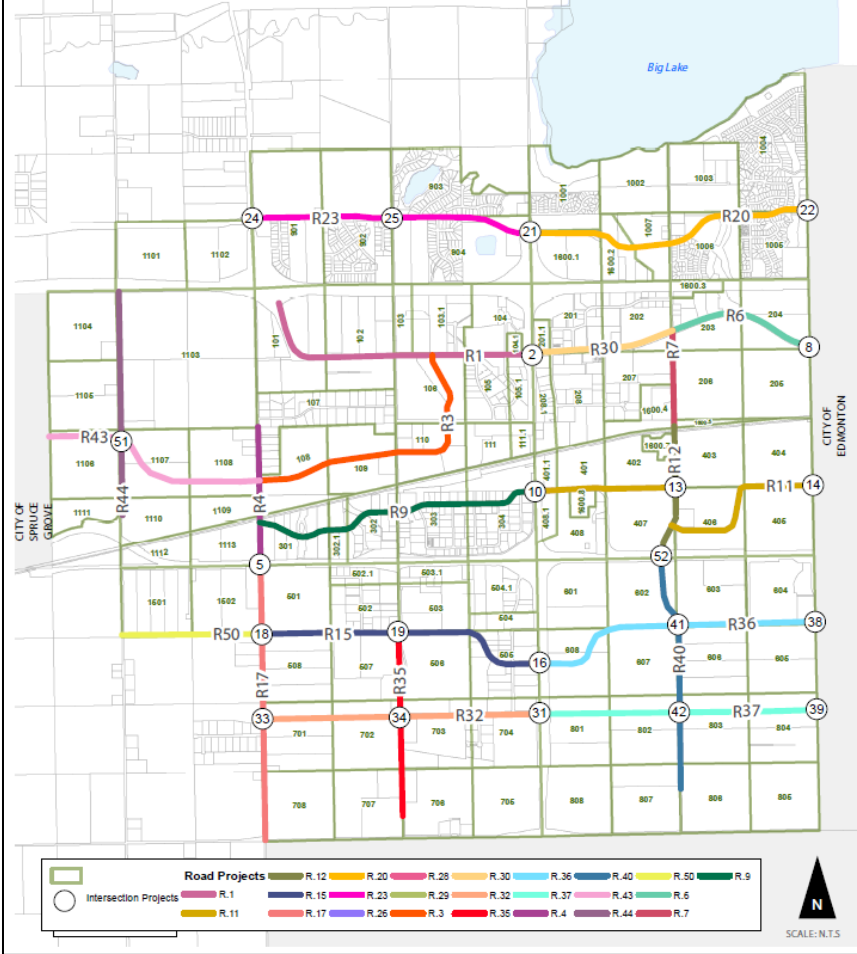
## Off-Site Levy Projects

### Schedule H: Fifth Meridian Transportation Off-site Infrastructure



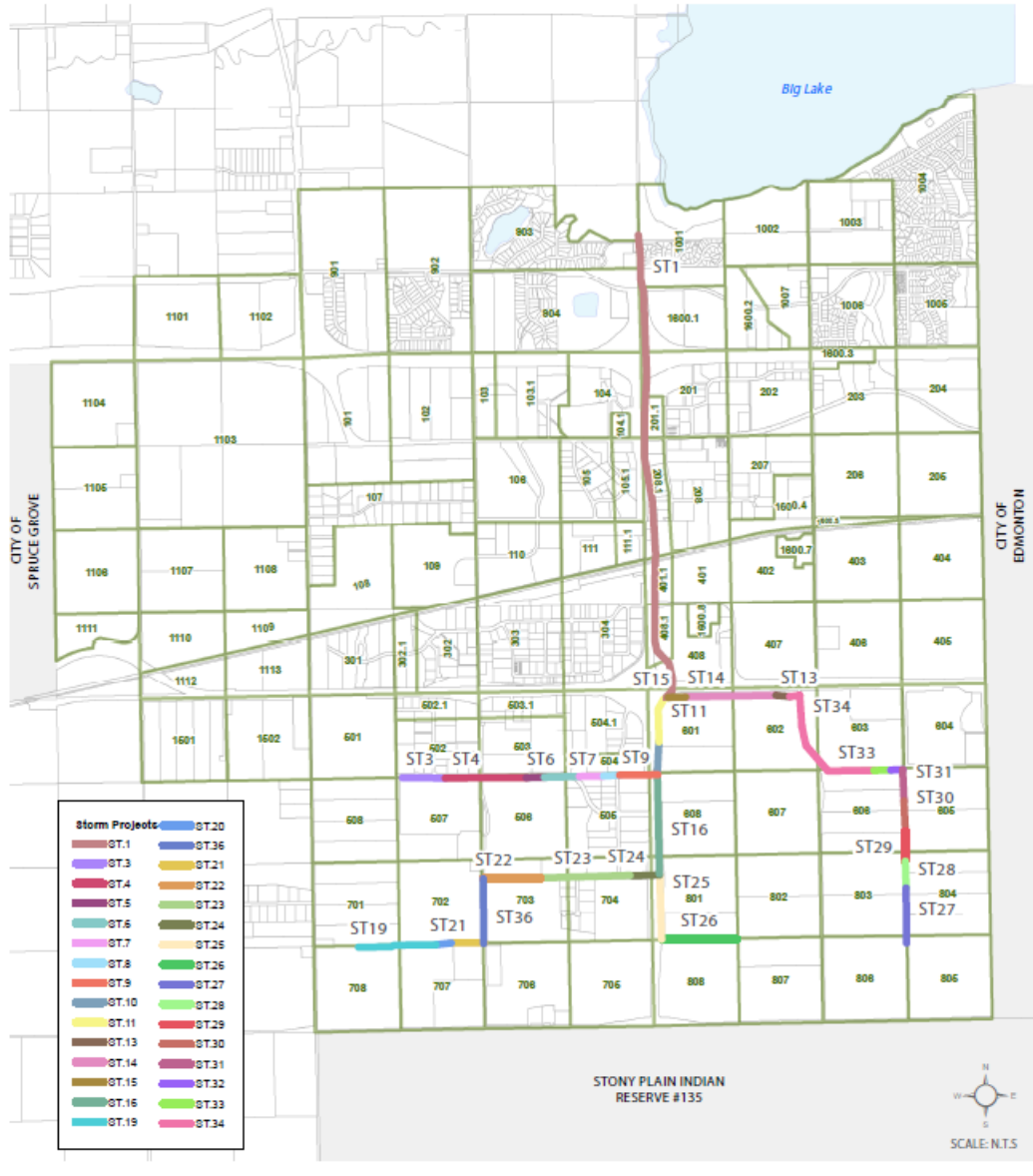
## Off-Site Levy Projects

### Schedule G: Acheson/Big Lake Transportation Off-site Infrastructure



# Off-Site Levy Projects

## Schedule C: Acheson/Big Lake Off-Site Levy Payments





## Appendix 4 – Water Project Cost and Allocation

Water Facilities										
Item	Project Description	Project Cost				Other Funding	Cost Allocation		Levy Balance	
		Cost of Completed Work	Debtore Interest	Estimated Cost of Work Yet to be Completed	Total Project Estimated Cost	Grants and Other Contributions	Parkland County Portion	Leviable Portion	Collected	Outstanding Balance
W1	Zone 4 Reservoir Expansion (9000m3)	\$ 5,753,497	\$ 1,506,043	\$ -	\$ 7,259,539	\$ -	\$ -	\$ 7,259,539	\$ 1,411,008	\$ 5,848,532
W2	Zone 3 Pump Upgrade	\$ -	\$ -	\$ -	\$ -	\$ -	\$ -	\$ -	\$ -	\$ -
W3	Zone 3 Pump Upgrade	\$ -	\$ -	\$ -	\$ -	\$ -	\$ -	\$ -	\$ -	\$ -
W4	Zone 3 New West Acheson Park Reservoir 9000m3 & Pumphouse	\$ -	\$ -	\$ 18,379,890	\$ 18,379,890	\$ 34,123	\$ -	\$ 18,345,767	\$ 1,063,781	\$ 17,281,986
W5	Zone 3 West Acheson Park Reservoir Expansion 15,000m3	\$ -	\$ -	\$ 19,942,913	\$ 19,942,913	\$ -	\$ -	\$ 19,942,913	\$ -	\$ 19,942,913
W6	Zone 1 Water Mains (Near future, long term, and ultimate)	\$ -	\$ -	\$ 5,017,355	\$ 5,017,355	\$ 2,654	\$ -	\$ 5,014,700	\$ 123,287	\$ 4,891,413
W7	Zone 2 Water Mains (Near future, long term, and ultimate)	\$ 1,579,772	\$ -	\$ 4,099,406	\$ 5,679,178	\$ 785,460	\$ -	\$ 4,893,718	\$ 14,415	\$ 4,879,303
W8	Big Lakes East Water Mains	\$ 1,888,729	\$ 169,808	\$ 6,635,161	\$ 8,693,698	\$ -	\$ -	\$ 8,693,698	\$ 107,294	\$ 8,586,403
W9	Big Lakes West Water Mains	\$ -	\$ -	\$ 2,762,211	\$ 2,762,211	\$ -	\$ -	\$ 2,762,211	\$ 36,224	\$ 2,725,987
W10	Zone 3 Water Mains	\$ -	\$ -	\$ 240,465	\$ 240,465	\$ -	\$ -	\$ 240,465	\$ -	\$ 240,465
W11	5th Meridian - Supply Line From Regional Line	\$ -	\$ -	\$ 4,222,334	\$ 4,222,334	\$ -	\$ -	\$ 4,222,334	\$ -	\$ 4,222,334
W12	5th Meridian - Water Reservoir	\$ -	\$ -	\$ 10,164,564	\$ 10,164,564	\$ -	\$ -	\$ 10,164,564	\$ -	\$ 10,164,564
W13	5th Meridian (Area A) - Water Mains	\$ -	\$ -	\$ 3,252,791	\$ 3,252,791	\$ -	\$ -	\$ 3,252,791	\$ -	\$ 3,252,791
W14	5th Meridian (Area B) - Water Mains	\$ -	\$ -	\$ 5,302,514	\$ 5,302,514	\$ -	\$ -	\$ 5,302,514	\$ -	\$ 5,302,514
W15	5th Meridian (Area C) - Water Mains	\$ -	\$ -	\$ 8,379,120	\$ 8,379,120	\$ -	\$ -	\$ 8,379,120	\$ -	\$ 8,379,120
W16	Acheson Area 11 Water Mains (Near future, long term, and ultimate)	\$ -	\$ -	\$ 13,778,645	\$ 13,778,645	\$ -	\$ -	\$ 13,778,645	\$ -	\$ 13,778,645
W17	Old Bylaw #52-2003 (A5 - Hunter's Watermain)	\$ 272,702	\$ 74,981	\$ -	\$ 347,683	\$ 21,811	\$ 21,527	\$ 304,345	\$ 212,911	\$ 91,434
W18	Acheson Big Lake Water Servicing Study Update - 2020	\$ 57,860	\$ -	\$ -	\$ 57,860	\$ -	\$ -	\$ 57,860	\$ 11,246	\$ 46,614
W19	Zone 4 Water Mains	\$ 2,778,734	\$ -	\$ 8,264,253	\$ 11,042,988	\$ 1,036,691	\$ -	\$ 10,006,296	\$ -	\$ 10,006,296
W20	Zone 5 Water Mains	\$ 6,468,196	\$ 505,790	\$ 5,000,452	\$ 11,974,438	\$ 2,049,130	\$ -	\$ 9,925,308	\$ -	\$ 9,925,308
W21	Zone 6 Water Mains	\$ 1,221,475	\$ -	\$ 8,998,754	\$ 10,220,229	\$ 765,219	\$ -	\$ 9,455,010	\$ -	\$ 9,455,010
W22	Zone 7 Water Mains	\$ 2,675,555	\$ 1,002,427	\$ 4,976,580	\$ 8,654,562	\$ -	\$ -	\$ 8,654,562	\$ 295,651	\$ 8,358,911
W23	Zone 8 Water Mains	\$ -	\$ -	\$ 5,465,874	\$ 5,465,874	\$ -	\$ -	\$ 5,465,874	\$ -	\$ 5,465,874
W24	Zone 4 Reservoir Expansion (Adjacent to Zone 4 Reservoir) 17,270m3 & Pumphouse	\$ -	\$ -	\$ 13,341,626	\$ 13,341,626	\$ -	\$ -	\$ 13,341,626	\$ -	\$ 13,341,626
W25	New PRVs (x9)	\$ 255,377	\$ 24,258	\$ 3,329,918	\$ 3,609,553	\$ -	\$ -	\$ 3,609,553	\$ 54,352	\$ 3,555,202
W26	Acheson Big Lake Water Servicing Study Update - 2025	\$ -	\$ -	\$ 71,878	\$ 71,878	\$ -	\$ -	\$ 71,878	\$ -	\$ 71,878
W27	Acheson Big Lake Water Servicing Study Update - 2030	\$ -	\$ -	\$ 71,878	\$ 71,878	\$ -	\$ -	\$ 71,878	\$ -	\$ 71,878
W28	Acheson Big Lake Water Servicing Study Update - 2035	\$ -	\$ -	\$ 71,878	\$ 71,878	\$ -	\$ -	\$ 71,878	\$ -	\$ 71,878
W29	Acheson Big Lake Water Servicing Study Update - 2040	\$ -	\$ -	\$ 71,878	\$ 71,878	\$ -	\$ -	\$ 71,878	\$ -	\$ 71,878
W30	Zone 5 & 7 East-West Distribution Main	\$ 1,522,631	\$ 645,749	\$ 1,308,966	\$ 3,477,346	\$ -	\$ -	\$ 3,477,346	\$ 174,303	\$ 3,303,042
W31	Zone 6 & 8 East-West Distribution Main	\$ 245,079	\$ 103,929	\$ 2,926,355	\$ 3,275,363	\$ -	\$ -	\$ 3,275,363	\$ -	\$ 3,275,363
W32	West Acheson South Water Distribution Mains (1501, 1502, 1112, 1113)	\$ -	\$ -	\$ 3,051,815	\$ 3,051,815	\$ -	\$ -	\$ 3,051,815	\$ -	\$ 3,051,815
<b>TOTAL</b>		<b>\$ 24,719,608</b>	<b>\$ 4,032,985</b>	<b>\$ 159,129,471</b>	<b>\$ 187,882,064</b>	<b>\$ 4,695,088</b>	<b>\$ 21,527</b>	<b>\$ 183,165,449</b>	<b>\$ 3,504,472</b>	<b>\$ 179,660,976</b>

## Appendix 5 – Sanitary Project Cost and Allocation

Sanitary Facilities										
Item	Project Description	Project Cost				Other Funding	Cost Allocation		Levy Balance	
		Cost of Completed Work	Debtore Interest	Estimated Cost of Work Yet to be Completed	Total Project Estimated Cost	Grants and Other Contributions	Parkland County Portion	Leviable Portion	Collected	Outstanding Balance
SAN1	5th Meridian (Area A) Gravity Main	\$ -	\$ -	\$ 1,257,018	\$ 1,257,018	\$ -	\$ -	\$ 1,257,018	\$ -	\$ 1,257,018
SAN2	5th Meridian (Area B) Gravity Main	\$ -	\$ -	\$ 3,941,479	\$ 3,941,479	\$ -	\$ -	\$ 3,941,479	\$ -	\$ 3,941,479
SAN3	5th Meridian (Area C) Gravity Main	\$ -	\$ -	\$ 3,274,176	\$ 3,274,176	\$ -	\$ -	\$ 3,274,176	\$ -	\$ 3,274,176
SAN4	Parkland Business Park (Sewer Main Upsizing, etc.)	\$ -	\$ -	\$ -	\$ -	\$ -	\$ -	\$ -	\$ -	\$ -
SAN5	Parkland Industrial Estates (Sewer Main Upsizing, etc.)	\$ -	\$ -	\$ -	\$ -	\$ -	\$ -	\$ -	\$ -	\$ -
SAN6	Parkland Industrial Estates (Sewer Main Upsizing, etc.)	\$ -	\$ -	\$ -	\$ -	\$ -	\$ -	\$ -	\$ -	\$ -
SAN7	Acheson Road (Sewer Main Upsizing, etc.)	\$ -	\$ -	\$ -	\$ -	\$ -	\$ -	\$ -	\$ -	\$ -
SAN8	Glowing Embers (Sewer Main Upsizing, etc.)	\$ -	\$ -	\$ -	\$ -	\$ -	\$ -	\$ -	\$ -	\$ -
SAN9	Residential (Meridien Avenue) Creek Crossing (Sewer Main Upsizing, etc.)	\$ -	\$ -	\$ 586,526	\$ 586,526	\$ -	\$ -	\$ 586,526	\$ 21,712	\$ 564,814
SAN10	Bevington Trunk (Hwy 16 A to Hwy 16 Parkland Industrial Estates)	\$ 5,825,711	\$ -	\$ -	\$ 5,825,711	\$ 2,909,771	\$ -	\$ 2,915,939	\$ 23,658	\$ 2,892,281
SAN11	Old Bylaw #52-2003 (A1 - Acheson Trunk)	\$ 323,024	\$ 88,817	\$ -	\$ 411,841	\$ 17,478	\$ 10,916	\$ 383,447	\$ 383,447	\$ -
SAN12	Old Bylaw #52-2003 (A2 - Hunter's Trunk)	\$ 202,499	\$ 67,666	\$ -	\$ 270,165	\$ -	\$ 23,504	\$ 246,661	\$ 153,556	\$ 93,105
SAN13	Old Bylaw #52-2003 (A3 - Acheson Collection)	\$ 359,314	\$ 98,795	\$ -	\$ 458,109	\$ 25,440	\$ 34,402	\$ 398,268	\$ 358,506	\$ 39,762
SAN14	Bevington Trunk (Oversizing for Acheson Zone 6)	\$ 743,873	\$ -	\$ -	\$ 743,873	\$ -	\$ -	\$ 743,873	\$ -	\$ 743,873
SAN15	Leder Development Area (Sewer Main Upsizing, etc.)	\$ -	\$ -	\$ 3,728,587	\$ 3,728,587	\$ -	\$ -	\$ 3,728,587	\$ -	\$ 3,728,587
SAN16	Acheson Trunk North of CN Railway (Sewer Main upsizing,	\$ -	\$ -	\$ 8,000,433	\$ 8,000,433	\$ -	\$ -	\$ 8,000,433	\$ -	\$ 8,000,433
SAN17	Zone 5 Liftstation Upgrade & Acheson Trunk Upstream of Zone 5 Liftstation (Sewer Main Upsizing, etc.)	\$ 1,208,461	\$ -	\$ 6,074,355	\$ 7,282,816	\$ -	\$ -	\$ 7,282,816	\$ 849,274	\$ 6,433,542
SAN18	Acheson Trunk Extension from DS MH N267 to US MH N672 (Zone 7)	\$ 7,267,051	\$ 5,048,441	\$ 666,809	\$ 12,982,302	\$ -	\$ -	\$ 12,982,302	\$ 35,052	\$ 12,947,250
SAN19	Acheson Zone East Upsizing (Near Future) Triggered by 3-53-26-4	\$ -	\$ -	\$ 2,455,587	\$ 2,455,587	\$ -	\$ -	\$ 2,455,587	\$ -	\$ 2,455,587
SAN20	Acheson Big Lake Sanitary Servicing Study Update - 2020	\$ 74,961	\$ -	\$ -	\$ 74,961	\$ -	\$ -	\$ 74,961	\$ 74,961	\$ 0
SAN21	Acheson Big Lake Sanitary Servicing Study Update - 2027	\$ -	\$ -	\$ 78,413	\$ 78,413	\$ -	\$ -	\$ 78,413	\$ 3,155	\$ 75,258
SAN22	Acheson Big Lake Sanitary Servicing Study Update - 2032	\$ -	\$ -	\$ 78,413	\$ 78,413	\$ -	\$ -	\$ 78,413	\$ 3,155	\$ 75,258
SAN23	Acheson Big Lake Sanitary Servicing Study Update - 2037	\$ -	\$ -	\$ 78,413	\$ 78,413	\$ -	\$ -	\$ 78,413	\$ 3,155	\$ 75,258
SAN24	Acheson Big Lake Sanitary Servicing Study Update - 2042	\$ -	\$ -	\$ 78,413	\$ 78,413	\$ -	\$ -	\$ 78,413	\$ 3,155	\$ 75,258
SAN25	Atim Creek Gravity Trunk (West Acheson Area 11)	\$ -	\$ -	\$ 5,157,870	\$ 5,157,870	\$ -	\$ -	\$ 5,157,870	\$ -	\$ 5,157,870
SAN26	Bevington Trunk Extension Zone 6 (Oversizing for Zone 8)	\$ 525,053	\$ -	\$ 9,493,794	\$ 10,018,848	\$ 456,653	\$ -	\$ 9,562,194	\$ -	\$ 9,562,194
SAN27	Bevington Trunk Extension Zone 8	\$ -	\$ -	\$ 3,485,383	\$ 3,485,383	\$ -	\$ -	\$ 3,485,383	\$ -	\$ 3,485,383

Sanitary Facilities										
Item	Project Description	Project Cost				Other Funding	Cost Allocation		Levy Balance	
		Cost of Completed Work	Debtenture Interest	Estimated Cost of Work Yet to be Completed	Total Project Estimated Cost	Grants and Other Contributions	Parkland County Portion	Leviable Portion	Collected	Outstanding Balance
SAN28	Zone 6 Liftstation #1 & Forcemain	\$ -	\$ -	\$ 3,153,296	\$ 3,153,296	\$ -	\$ -	\$ 3,153,296	\$ -	\$ 3,153,296
SAN29	Zone 6 Liftstation #5 & Forcemain including LS #1 Upgrades	\$ -	\$ -	\$ 2,456,925	\$ 2,456,925	\$ -	\$ -	\$ 2,456,925	\$ -	\$ 2,456,925
SAN30	Area 15 Liftstation #3 & Forcemain	\$ -	\$ -	\$ 3,281,847	\$ 3,281,847	\$ -	\$ -	\$ 3,281,847	\$ -	\$ 3,281,847
SAN31	Zone 5 Liftstation #4 & Forcemain	\$ -	\$ -	\$ 4,497,089	\$ 4,497,089	\$ -	\$ -	\$ 4,497,089	\$ -	\$ 4,497,089
SAN32	Zone 7 Liftstation #6 & Forcemain	\$ -	\$ -	\$ 950,982	\$ 950,982	\$ -	\$ -	\$ 950,982	\$ -	\$ 950,982
SAN33	Zone 8 Liftstation #8 & Forcemain	\$ -	\$ -	\$ 1,651,890	\$ 1,651,890	\$ -	\$ -	\$ 1,651,890	\$ -	\$ 1,651,890
SAN34	Zone 8 Liftstation #9 & Forcemain	\$ -	\$ -	\$ 1,662,345	\$ 1,662,345	\$ -	\$ -	\$ 1,662,345	\$ -	\$ 1,662,345
SAN35	Zone 8 Liftstation #10 & Forcemain	\$ -	\$ -	\$ -	\$ -	\$ -	\$ -	\$ -	\$ -	\$ -
SAN36	Zone 6 Liftstation #11 & Forcemain	\$ -	\$ -	\$ -	\$ -	\$ -	\$ -	\$ -	\$ -	\$ -
SAN37	Zone 4 Liftstation #12 & Forcemain	\$ -	\$ -	\$ 1,955,085	\$ 1,955,085	\$ -	\$ -	\$ 1,955,085	\$ -	\$ 1,955,085
SAN38	Zone 4 Liftstation #13 & Forcemain	\$ -	\$ -	\$ 736,300	\$ 736,300	\$ -	\$ -	\$ 736,300	\$ -	\$ 736,300
SAN39	Zone 7 collector main (Area 701 & 702)	\$ -	\$ -	\$ 381,800	\$ 381,800	\$ -	\$ -	\$ 381,800	\$ -	\$ 381,800
SAN40	Zone 7 collector main (Area 706 & 705)	\$ 165,063	\$ -	\$ 337,892	\$ 502,955	\$ -	\$ -	\$ 502,955	\$ -	\$ 502,955
SAN41	Zone 6 collector main (Area 604 & 603)	\$ -	\$ -	\$ 1,358,769	\$ 1,358,769	\$ -	\$ -	\$ 1,358,769	\$ -	\$ 1,358,769
SAN42	Zone 2 collector main (Area 205 & 204)	\$ -	\$ -	\$ 513,150	\$ 513,150	\$ -	\$ -	\$ 513,150	\$ -	\$ 513,150
SAN43	Zone 2 collector main (Area 205 & 206)	\$ -	\$ -	\$ -	\$ -	\$ -	\$ -	\$ -	\$ -	\$ -
SAN44	Area 11 (Atim Road) collector main (Area 108, 1109, 1110)	\$ -	\$ -	\$ 2,172,874	\$ 2,172,874	\$ -	\$ -	\$ 2,172,874	\$ -	\$ 2,172,874
SAN45	West Big Lake collector main (Area 1102 & 1101)	\$ -	\$ -	\$ 488,562	\$ 488,562	\$ -	\$ -	\$ 488,562	\$ -	\$ 488,562
SAN46	Area 1112/1113 (West Acheson) Liftstation #2 & Forcemain	\$ -	\$ -	\$ 1,662,345	\$ 1,662,345	\$ -	\$ -	\$ 1,662,345	\$ -	\$ 1,662,345
SAN47	Big Lake East Collector Main (Area 1600.2 & 1007)	\$ -	\$ -	\$ 493,114	\$ 493,114	\$ -	\$ -	\$ 493,114	\$ -	\$ 493,114
SAN48	Bevington Trunk Upgrade in Zone 4 (Ultimate)	\$ -	\$ -	\$ 1,515,963	\$ 1,515,963	\$ -	\$ -	\$ 1,515,963	\$ -	\$ 1,515,963
SAN49	Acheson Trunk Upgrade - 96th Street to Zone 5 Liftstation	\$ 1,302,614	\$ -	\$ -	\$ 1,302,614	\$ -	\$ -	\$ 1,302,614	\$ 3,707	\$ 1,298,906
<b>TOTAL</b>		<b>\$ 17,997,624</b>	<b>\$ 5,303,720</b>	<b>\$ 77,705,894</b>	<b>\$ 101,007,238</b>	<b>\$ 3,409,343</b>	<b>\$ 68,822</b>	<b>\$ 97,529,073</b>	<b>\$ 1,916,492</b>	<b>\$ 95,612,581</b>

## Appendix 6 – Transportation Project Cost and Allocation

Transportation Facilities										
Item	Project Description	Project Cost				Other Funding	Cost Allocation		Levy Balance	
		Cost of Completed Work	Debtenture Interest	Estimated Cost of Work Yet to be Completed	Total Project Estimated Cost	Grants and Other Contributions	Parkland County Portion	Leviable Portion	Collected	Outstanding Balance
T1	114 Avenue: Hwy 44 to Hwy 60 (Acheson Zone 1)	\$ 4,345,151	\$ -	\$ 4,208,138	\$ 8,553,289	\$ 241,226	\$ -	\$ 8,312,063	\$ 2,101,947	\$ 6,210,116
T2	114 Avenue / Hwy 60 Intersection (Acheson Zone 1 & 2)	\$ 4,904,718	\$ -	\$ -	\$ 4,904,718	\$ -	\$ -	\$ 4,904,718	\$ 1,459,268	\$ 3,445,450
T3	Zone 1 Collector Road: 114 Avenue to Spruce Valley Road	\$ -	\$ -	\$ 3,960,158	\$ 3,960,158	\$ -	\$ -	\$ 3,960,158	\$ 553,547	\$ 3,406,611
T4	Spruce Valley Road: Hwy 16A to Osborne Acres (Acheson Zone 1)	\$ 39,139	\$ -	\$ 6,584,559	\$ 6,623,698	\$ -	\$ -	\$ 6,623,698	\$ 161,968	\$ 6,461,730
T5	Spruce Valley Road / Hwy 16A Intersection (Acheson Zone 1 & 5)	\$ 2,169,883	\$ -	\$ -	\$ 2,169,883	\$ 1,827,883	\$ -	\$ 342,000	\$ 341,883	\$ 117
T6	114 Avenue: Bevington Road to 231 Street (Acheson Zone 2)	\$ 2,106,477	\$ -	\$ 5,917,530	\$ 8,024,007	\$ 1,462,417	\$ -	\$ 6,561,590	\$ 1,301,875	\$ 5,259,715
T7	Bevington Road: 114 Avenue to CN Crossing (Acheson Zone 114 Avenue / 231 Street Intersection (Acheson Zone 2 & Winterburn)	\$ 11,944	\$ -	\$ 3,250,198	\$ 3,262,142	\$ -	\$ -	\$ 3,262,142	\$ 342,917	\$ 2,919,225
T8	Acheson Road: Spruce Valley Road to Hwy 60 (Acheson Zone 3)	\$ -	\$ -	\$ 1,127,180	\$ 1,127,180	\$ -	\$ -	\$ 1,127,180	\$ 182,272	\$ 944,907
T9	Acheson Road / Hwy 60 Intersection (Acheson Zone 3 & 4)	\$ 4,775	\$ -	\$ 976,889	\$ 981,664	\$ -	\$ -	\$ 981,664	\$ -	\$ 981,664
T10	Acheson Road: Hwy 60 to 231 Street (Acheson Zone 4 & Winterburn)	\$ -	\$ -	\$ 3,757,266	\$ 3,757,266	\$ -	\$ -	\$ 3,757,266	\$ 4,154	\$ 3,753,111
T11	Bevington Road: CN Crossing to Hwy 16A (Acheson Zone 4)	\$ 39,331	\$ -	\$ 20,321,906	\$ 20,361,237	\$ -	\$ -	\$ 20,361,237	\$ 8,861	\$ 20,352,376
T12	Acheson Road / Bevington Road Intersection (Acheson Zone 4 & Winturburn)	\$ 3,745,604	\$ -	\$ 4,379,418	\$ 8,125,023	\$ 3,422,587	\$ -	\$ 4,702,435	\$ 4,154	\$ 4,698,281
T13	Acheson Road / 231 Street Intersection (Acheson Zone 4 & Winturburn)	\$ -	\$ -	\$ 1,127,180	\$ 1,127,180	\$ -	\$ -	\$ 1,127,180	\$ 1,340	\$ 1,125,840
T14	96 Avenue: Hwy 60 to Spruce Valley Road (Acheson Zone 5)	\$ -	\$ -	\$ 1,127,180	\$ 1,127,180	\$ -	\$ -	\$ 1,127,180	\$ 1,340	\$ 1,125,840
T15	96 Avenue / Hwy 60 Intersection (Acheson Zone 5 & 6)	\$ 4,585,639	\$ -	\$ 7,268,443	\$ 11,854,082	\$ 1,497,581	\$ -	\$ 10,356,501	\$ 3,256,101	\$ 7,100,400
T16	Spruce Valley Road: Hwy 16A to Hwy 628 (Acheson Zone 5 & 6)	\$ 3,512,106	\$ -	\$ -	\$ 3,512,106	\$ 1,005,638	\$ -	\$ 2,506,467	\$ 1,052,738	\$ 1,453,729
T17	Spruce Valley Road / 96 Avenue Intersection (Acheson Zone 5)	\$ 1,425,463	\$ -	\$ 7,466,482	\$ 8,891,945	\$ 1,298,657	\$ -	\$ 7,593,288	\$ 776,371	\$ 6,816,917
T18	96 Avenue / 279 Street Intersection (Acheson Zone 5)	\$ -	\$ -	\$ 1,030,994	\$ 1,030,994	\$ -	\$ -	\$ 1,030,994	\$ 94,080	\$ 936,913
T19	Meridian Ave - Hwy 60 to 231 Street (Big Lake East)	\$ -	\$ -	\$ 526,017	\$ 526,017	\$ -	\$ -	\$ 526,017	\$ 48,000	\$ 478,017
T20		\$ 687,393	\$ -	\$ 6,299,347	\$ 6,986,740	\$ 107,034	\$ -	\$ 6,879,706	\$ 556,719	\$ 6,322,987



## Transportation Facilities

Item	Project Description	Project Cost				Other Funding	Cost Allocation		Levy Balance	
		Cost of Completed Work	Debiture Interest	Estimated Cost of Work Yet to be Completed	Total Project Estimated Cost	Grants and Other Contributions	Parkland County Portion	Leviable Portion	Collected	Outstanding Balance
T21	Meridian Ave / Hwy 60 Intersection (Big Lake East)	\$ -	\$ -	\$ 1,303,471	\$ 1,303,471	\$ -	\$ -	\$ 1,303,471	\$ 72,629	\$ 1,230,842
T22	Meridian Ave / 231 Street Intersection (Big Lake East)	\$ -	\$ -	\$ 616,567	\$ 616,567	\$ -	\$ -	\$ 616,567	\$ -	\$ 616,567
T23	Meridian Ave: Hwy 44 to Hwy 60 (Big Lake West)	\$ 1,539,355	\$ -	\$ 2,343,031	\$ 3,882,386	\$ -	\$ -	\$ 3,882,386	\$ 332,308	\$ 3,550,078
T24	Meridian Ave / Hwy 44 Intersection (Big Lake West)	\$ -	\$ -	\$ 2,012,016	\$ 2,012,016	\$ -	\$ -	\$ 2,012,016	\$ 522,346	\$ 1,489,670
T25	Meridian Ave / RR264 Intersection (Big Lake West)	\$ -	\$ -	\$ 791,280	\$ 791,280	\$ -	\$ -	\$ 791,280	\$ 94,297	\$ 696,983
T26	Hwy 779 / New Service Road Intersection (5th Meridian ASP)	\$ -	\$ -	\$ 28,466,472	\$ 28,466,472	\$ -	\$ -	\$ 28,466,472	\$ -	\$ 28,466,472
T27	Hwy 779 / Proposed Road (5th Meridian ASP)	\$ -	\$ -	\$ 5,662,426	\$ 5,662,426	\$ -	\$ -	\$ 5,662,426	\$ -	\$ 5,662,426
T28	Golf Course Road (5th Meridian ASP)	\$ -	\$ -	\$ 3,494,258	\$ 3,494,258	\$ -	\$ -	\$ 3,494,258	\$ -	\$ 3,494,258
T29	New Proposed Road (5th Meridian ASP)	\$ -	\$ -	\$ 2,795,406	\$ 2,795,406	\$ -	\$ -	\$ 2,795,406	\$ -	\$ 2,795,406
T30	114 Avenue: Hwy 60 to Bevington Road (Acheson Zone 2)	\$ -	\$ -	\$ 6,273,000	\$ 6,273,000	\$ 140,090	\$ -	\$ 6,132,910	\$ -	\$ 6,132,910
T31	92 Avenue / Hwy 60 Intersection (Acheson Zone 7 & 8)	\$ 4,100,000	\$ -	\$ -	\$ 4,100,000	\$ 3,500,000	\$ -	\$ 600,000	\$ 600,000	\$ 0
T32	92 Avenue: Highway 60 to Spruce Valley Road (Acheson Zone 7)	\$ 7,209,604	\$ 2,454,205	\$ 11,844,297	\$ 21,508,106	\$ -	\$ -	\$ 21,508,106	\$ 2,313,178	\$ 19,194,929
T33	92 Avenue / Spruce Valley Road Intersection (Acheson Zone 7)	\$ -	\$ -	\$ 1,030,994	\$ 1,030,994	\$ -	\$ -	\$ 1,030,994	\$ -	\$ 1,030,994
T34	92 Avenue / 279 Street Intersection (Acheson Zone 7)	\$ -	\$ -	\$ 526,017	\$ 526,017	\$ -	\$ -	\$ 526,017	\$ -	\$ 526,017
T35	279 Street: Hwy 628 to 96 Avenue (Acheson Zone 5 & 7)	\$ 2,621,889	\$ -	\$ 5,668,928	\$ 8,290,817	\$ -	\$ -	\$ 8,290,817	\$ 1,259,820	\$ 7,030,997
T36	96th Avenue: Hwy 60 to 231st Street (Zone 6)	\$ 42,227	\$ -	\$ 18,786,655	\$ 18,828,882	\$ -	\$ -	\$ 18,828,882	\$ -	\$ 18,828,882
T37	92nd Avenue: Hwy 60 to 231st Street (Zone 8)	\$ 40,573	\$ -	\$ 28,484,974	\$ 28,525,547	\$ -	\$ -	\$ 28,525,547	\$ -	\$ 28,525,547
T38	96th Avenue & 231st Street Intersection (Zone 6)	\$ -	\$ -	\$ 1,127,180	\$ 1,127,180	\$ -	\$ -	\$ 1,127,180	\$ -	\$ 1,127,180
T39	92nd Avenue & 231st Street Intersection (Zone 8)	\$ -	\$ -	\$ 1,127,180	\$ 1,127,180	\$ -	\$ -	\$ 1,127,180	\$ -	\$ 1,127,180
T40	Pinchbeck Rd: Hwy 16A to Hwy 628 (Zone 6 & 8)	\$ 2,190,810	\$ -	\$ 21,486,927	\$ 23,677,737	\$ 1,270,761	\$ -	\$ 22,406,976	\$ -	\$ 22,406,976
T41	96th Ave & Pinchbeck Rd Intersection (Zone 6)	\$ -	\$ -	\$ 526,017	\$ 526,017	\$ -	\$ -	\$ 526,017	\$ -	\$ 526,017
T42	92nd Ave & Pinchbeck Rd Intersection (Zone 8)	\$ -	\$ -	\$ 526,017	\$ 526,017	\$ -	\$ -	\$ 526,017	\$ -	\$ 526,017
T43	Collector Rd: Spruce Valley Rd to Hwy 44 (West Acheson Area 11)	\$ -	\$ -	\$ 5,417,226	\$ 5,417,226	\$ -	\$ -	\$ 5,417,226	\$ -	\$ 5,417,226
T44	Atim Rd: Hwy 16 to Hwy 16A (West Acheson Area 11)	\$ -	\$ -	\$ 4,528,257	\$ 4,528,257	\$ -	\$ -	\$ 4,528,257	\$ -	\$ 4,528,257
T45	Acheson Traffic Impact Assessment Update - 2019	\$ 130,353	\$ -	\$ -	\$ 130,353	\$ -	\$ -	\$ 130,353	\$ 120,373	\$ 9,980
T46	Acheson Traffic Impact Assessment Update - 2024	\$ -	\$ -	\$ 75,145	\$ 75,145	\$ -	\$ -	\$ 75,145	\$ -	\$ 75,145
T47	Acheson Traffic Impact Assessment Update - 2029	\$ -	\$ -	\$ 75,145	\$ 75,145	\$ -	\$ -	\$ 75,145	\$ -	\$ 75,145
T48	Acheson Traffic Impact Assessment Update - 2034	\$ -	\$ -	\$ 75,145	\$ 75,145	\$ -	\$ -	\$ 75,145	\$ -	\$ 75,145
T49	Acheson Traffic Impact Assessment Update - 2039	\$ -	\$ -	\$ 75,145	\$ 75,145	\$ -	\$ -	\$ 75,145	\$ -	\$ 75,145
T50	96th Ave: Spruce Valley Rd to Sandhills Rd (Acheson Zone 5 West)	\$ -	\$ -	\$ 3,820,388	\$ 3,820,388	\$ -	\$ -	\$ 3,820,388	\$ -	\$ 3,820,388
T51	Collector Rd & Atim Rd Intersection (West Acheson Area 11)	\$ -	\$ -	\$ 526,017	\$ 526,017	\$ -	\$ -	\$ 526,017	\$ -	\$ 526,017
T52	Bevington/Pinchbeck Rd & Hwy 16A Intersection (Zones 4, 6)	\$ 2,612,016	\$ -	\$ -	\$ 2,612,016	\$ 2,114,234	\$ -	\$ 497,782	\$ -	\$ 497,782
<b>TOTAL</b>		<b>\$ 48,064,449</b>	<b>\$ 2,454,205</b>	<b>\$ 238,814,464</b>	<b>\$ 289,333,118</b>	<b>\$ 17,888,109</b>	<b>\$ -</b>	<b>\$ 271,445,009</b>	<b>\$ 17,564,485</b>	<b>\$ 253,880,523</b>

## Appendix 7 – Stormwater Project Cost and Allocation

Storm Facilities										
Item	Project Description	Project Cost				Other Funding	Cost Allocation		Levy Balance	
		Cost of Completed Work	Debtore Interest	Estimated Cost of Work Yet to be Completed	Total Project Estimated Cost	Grants and Other Contributions	Parkland County Portion	Leviable Portion	Collected	Outstanding Balance
STO1	Outfall	\$ 15,815,936	\$ 3,423,960	\$ -	\$ 19,239,895	\$ 1,008,910	\$ -	\$ 18,230,985	\$ 8,178,715	\$ 10,052,269
STO2	Acheson Big Lake Master Drainage Plan Update - 2021	\$ -	\$ -	\$ 70,571	\$ 70,571	\$ -	\$ -	\$ 70,571	\$ 796	\$ 69,775
STO3	Collector Stage 1, Zone 5 N-111 to N-112	\$ 920,460	\$ -	\$ -	\$ 920,460	\$ 271,401	\$ -	\$ 649,059	\$ 13,488	\$ 635,571
STO4	Collector Stage 1, Zone 5 N-112 to N-113	\$ 1,195,725	\$ -	\$ -	\$ 1,195,725	\$ -	\$ -	\$ 1,195,725	\$ 17,521	\$ 1,178,204
STO5	Collector Stage 1, Zone 5 N-113 to N-114	\$ 267,775	\$ -	\$ -	\$ 267,775	\$ -	\$ -	\$ 267,775	\$ 12,871	\$ 254,904
STO6	Collector Stage 1, Zone 5 N-114 to N-115	\$ 516,566	\$ -	\$ -	\$ 516,566	\$ -	\$ -	\$ 516,566	\$ 24,829	\$ 491,737
STO7	Collector Stage 1, Zone 5 N-115 to N-116	\$ 352,440	\$ -	\$ -	\$ 352,440	\$ -	\$ -	\$ 352,440	\$ 30,504	\$ 321,937
STO8	Collector Stage 1, Zone 5 N-116 to N-117	\$ 237,614	\$ -	\$ -	\$ 237,614	\$ -	\$ -	\$ 237,614	\$ 34,893	\$ 202,721
STO9	Collector Stage 1, Zone 5 N-117 to N-118	\$ 560,200	\$ -	\$ -	\$ 560,200	\$ -	\$ -	\$ 560,200	\$ 82,263	\$ 477,936
STO10	Collector Stage 1, Zone 5,6,7&8 N-118 to N110	\$ 1,863,985	\$ -	\$ -	\$ 1,863,985	\$ -	\$ -	\$ 1,863,985	\$ 505,163	\$ 1,358,822
STO11	Collector Stage 1, Zone 5,6,7&8 N-110 to N104	\$ 3,113,467	\$ -	\$ -	\$ 3,113,467	\$ -	\$ -	\$ 3,113,467	\$ 843,788	\$ 2,269,679
STO12	Acheson Big Lake Master Drainage Plan Update - 2026	\$ -	\$ -	\$ 70,571	\$ 70,571	\$ -	\$ -	\$ 70,571	\$ 796	\$ 69,775
STO13	Collector Stage 2, Zone 4&6 N-201 to N-202	\$ -	\$ -	\$ 206,523	\$ 206,523	\$ -	\$ -	\$ 206,523	\$ -	\$ 206,523
STO14	Collector Stage 2, Zone 4&6 N-202 to N-203	\$ -	\$ -	\$ 1,845,977	\$ 1,845,977	\$ -	\$ -	\$ 1,845,977	\$ -	\$ 1,845,977
STO15	Collector Stage 2, Zone 4&6 N-203 to N-104	\$ -	\$ -	\$ 988,469	\$ 988,469	\$ -	\$ -	\$ 988,469	\$ -	\$ 988,469
STO16	Collector Stage 2, Zone 4&6 N-204 to N-118	\$ 1,691,166	\$ 765,757	\$ -	\$ 2,456,923	\$ -	\$ -	\$ 2,456,923	\$ 305,066	\$ 2,151,858
STO17	Acheson Big Lake Master Drainage Plan Update - 2031	\$ -	\$ -	\$ 70,571	\$ 70,571	\$ -	\$ -	\$ 70,571	\$ 796	\$ 69,775
STO18	Acheson Big Lake Master Drainage Plan Update - 2036	\$ -	\$ -	\$ 70,571	\$ 70,571	\$ -	\$ -	\$ 70,571	\$ 796	\$ 69,775
STO19	Collector Stage 3, Zone 7 N-301 to N-302	\$ -	\$ -	\$ 1,021,244	\$ 1,021,244	\$ -	\$ -	\$ 1,021,244	\$ -	\$ 1,021,244
STO20	Collector Stage 3, Zone 7 N-302 to N-303	\$ -	\$ -	\$ 103,796	\$ 103,796	\$ -	\$ -	\$ 103,796	\$ -	\$ 103,796
STO21	Collector Stage 3, Zone 7 N-303 to N-304	\$ 21,024	\$ -	\$ 474,221	\$ 495,245	\$ -	\$ -	\$ 495,245	\$ -	\$ 495,245
STO22	Collector Stage 3, Zone 7 N-304 to N-305	\$ 764,434	\$ -	\$ -	\$ 764,434	\$ -	\$ -	\$ 764,434	\$ 21,028	\$ 743,405
STO23	Collector Stage 3, Zone 7 N-305 to N-306	\$ 478,015	\$ 139,804	\$ -	\$ 617,818	\$ -	\$ -	\$ 617,818	\$ 76,712	\$ 541,106
STO24	Collector Stage 3, Zone 7 N-306 to N-307	\$ 1,110,793	\$ 502,965	\$ -	\$ 1,613,759	\$ -	\$ -	\$ 1,613,759	\$ 200,374	\$ 1,413,385
STO25	Collector Stage 3, Zone 8 N-307 to N-204	\$ -	\$ -	\$ 948,269	\$ 948,269	\$ -	\$ -	\$ 948,269	\$ -	\$ 948,269
STO26	Collector Stage 3, Zone 8 N-308 to N-307	\$ -	\$ -	\$ 908,525	\$ 908,525	\$ -	\$ -	\$ 908,525	\$ -	\$ 908,525
STO27	Collector Stage 3, Zone 8 N-309 to N-310	\$ -	\$ -	\$ 665,776	\$ 665,776	\$ -	\$ -	\$ 665,776	\$ -	\$ 665,776
STO28	Collector Stage 3, Zone 8 N-310 to N-311	\$ -	\$ -	\$ 321,212	\$ 321,212	\$ -	\$ -	\$ 321,212	\$ -	\$ 321,212
STO29	Collector Stage 3, Zone 8 N-311 to N-312	\$ -	\$ -	\$ 388,929	\$ 388,929	\$ -	\$ -	\$ 388,929	\$ -	\$ 388,929
STO30	Collector Stage 3, Zone 6 N-312 to N-313	\$ -	\$ -	\$ 450,772	\$ 450,772	\$ -	\$ -	\$ 450,772	\$ -	\$ 450,772
STO31	Collector Stage 3, Zone 6 N-313 to N-314	\$ -	\$ -	\$ 471,042	\$ 471,042	\$ -	\$ -	\$ 471,042	\$ -	\$ 471,042
STO32	Collector Stage 3, Zone 6 N-314 to N-315	\$ -	\$ -	\$ 175,100	\$ 175,100	\$ -	\$ -	\$ 175,100	\$ -	\$ 175,100
STO33	Collector Stage 3, Zone 6 N-315 to N-316	\$ -	\$ -	\$ 255,773	\$ 255,773	\$ -	\$ -	\$ 255,773	\$ -	\$ 255,773
STO34	Collector Stage 3, Zone 6 N-316 to N-317	\$ -	\$ -	\$ 2,933,110	\$ 2,933,110	\$ -	\$ -	\$ 2,933,110	\$ -	\$ 2,933,110
STO35	Acheson Big Lake Master Drainage Plan Update - 2041	\$ -	\$ -	\$ 70,571	\$ 70,571	\$ -	\$ -	\$ 70,571	\$ 723	\$ 69,848
STO36	Collector Stage 3, Zone 7	\$ 736,171	\$ -	\$ -	\$ 736,171	\$ -	\$ -	\$ 736,171	\$ 20,251	\$ 715,920
<b>TOTAL</b>		<b>\$ 29,645,769</b>	<b>\$ 4,832,485</b>	<b>\$ 12,511,595</b>	<b>\$ 46,989,849</b>	<b>\$ 1,280,311</b>	<b>\$ -</b>	<b>\$ 45,709,538</b>	<b>\$ 10,371,373</b>	<b>\$ 35,338,165</b>





















Benefiting Area	Transportation	Water	Sanitary	Storm
506.0	<ul style="list-style-type: none"> <li>Spruce Valley Road / Hwy 16A Intersection (Acheson Zone 1 &amp; 5)</li> <li>96 Avenue: Hwy 60 to Spruce Valley Road (Acheson Zone 5)</li> <li>96 Avenue / Hwy 60 Intersection (Acheson Zone 5 &amp; 6)</li> <li>Spruce Valley Road: Hwy 16A to Hwy 628 (Acheson Zone 5 &amp; 7)</li> <li>Spruce Valley Road / 96 Avenue Intersection (Acheson Zone 5)</li> <li>96 Avenue / 279 Street Intersection (Acheson Zone 5)</li> <li>279 Street: Hwy 628 to 96 Avenue (Acheson Zone 5 &amp; 7)</li> <li>Acheson Traffic Impact Assessment Update - 2019</li> <li>Acheson Traffic Impact Assessment Update - 2024</li> <li>Acheson Traffic Impact Assessment Update - 2029</li> <li>Acheson Traffic Impact Assessment Update - 2034</li> <li>Acheson Traffic Impact Assessment Update - 2039</li> </ul>	<ul style="list-style-type: none"> <li>Zone 4 Reservoir Expansion (9000m3)</li> <li>Zone 3 Pump Upgrade</li> <li>Zone 3 Pump Upgrade</li> <li>Zone 3 New West Acheson Park Reservoir 9000m3 &amp; Pumphouse</li> <li>Zone 3 West Acheson Park Reservoir Expansion 15,000m3</li> <li>Acheson Big Lake Water Servicing Study Update - 2020</li> <li>Zone 5 Water Mains</li> <li>Zone 4 Reservoir Expansion (Adjacent to Zone 4 Reservoir) 17,270m3 &amp; Pumphouse</li> <li>New PRVs (x9)</li> <li>Acheson Big Lake Water Servicing Study Update - 2025</li> <li>Acheson Big Lake Water Servicing Study Update - 2030</li> <li>Acheson Big Lake Water Servicing Study Update - 2035</li> <li>Acheson Big Lake Water Servicing Study Update - 2040</li> <li>Zone 5 &amp; 7 East-West Distribution Main</li> </ul>	<ul style="list-style-type: none"> <li>Acheson Trunk North of CN Railway (Sewer Main upsizing, etc.)</li> <li>Zone 5 Liftstation Upgrade &amp; Acheson Trunk Upstream of Zone 5 Liftstation (Sewer Main Upsizing, etc.)</li> <li>Acheson Trunk Extension from DS MH N267 to US MH N672 (Zone 7)</li> <li>Acheson Big Lake Sanitary Servicing Study Update - 2020</li> <li>Acheson Big Lake Sanitary Servicing Study Update - 2027</li> <li>Acheson Big Lake Sanitary Servicing Study Update - 2032</li> <li>Acheson Big Lake Sanitary Servicing Study Update - 2037</li> <li>Acheson Big Lake Sanitary Servicing Study Update - 2042</li> <li>Acheson Trunk Upgrade - 96th Street to Zone 5 Liftstation</li> </ul>	<ul style="list-style-type: none"> <li>Outfall</li> <li>Acheson Big Lake Master Drainage Plan Update - 2021</li> <li>Collector Stage 1, Zone 5 N-114 to N-115</li> <li>Collector Stage 1, Zone 5 N-115 to N-116</li> <li>Collector Stage 1, Zone 5 N-116 to N-117</li> <li>Collector Stage 1, Zone 5 N-117 to N-118</li> <li>Collector Stage 1, Zone 5, 6, 7&amp;8 N-118 to N110</li> <li>Collector Stage 1, Zone 5, 6, 7&amp;8 N-110 to N104</li> <li>Acheson Big Lake Master Drainage Plan Update - 2026</li> <li>Acheson Big Lake Master Drainage Plan Update - 2031</li> <li>Acheson Big Lake Master Drainage Plan Update - 2036</li> <li>Acheson Big Lake Master Drainage Plan Update - 2041</li> </ul>
507.0	<ul style="list-style-type: none"> <li>Spruce Valley Road / Hwy 16A Intersection (Acheson Zone 1 &amp; 5)</li> <li>96 Avenue: Hwy 60 to Spruce Valley Road (Acheson Zone 5)</li> <li>96 Avenue / Hwy 60 Intersection (Acheson Zone 5 &amp; 6)</li> <li>Spruce Valley Road: Hwy 16A to Hwy 628 (Acheson Zone 5 &amp; 7)</li> <li>Spruce Valley Road / 96 Avenue Intersection (Acheson Zone 5)</li> <li>96 Avenue / 279 Street Intersection (Acheson Zone 5)</li> <li>279 Street: Hwy 628 to 96 Avenue (Acheson Zone 5 &amp; 7)</li> <li>Acheson Traffic Impact Assessment Update - 2019</li> <li>Acheson Traffic Impact Assessment Update - 2024</li> <li>Acheson Traffic Impact Assessment Update - 2029</li> <li>Acheson Traffic Impact Assessment Update - 2034</li> <li>Acheson Traffic Impact Assessment Update - 2039</li> </ul>	<ul style="list-style-type: none"> <li>Zone 4 Reservoir Expansion (9000m3)</li> <li>Zone 3 Pump Upgrade</li> <li>Zone 3 Pump Upgrade</li> <li>Zone 3 New West Acheson Park Reservoir 9000m3 &amp; Pumphouse</li> <li>Zone 3 West Acheson Park Reservoir Expansion 15,000m3</li> <li>Acheson Big Lake Water Servicing Study Update - 2020</li> <li>Zone 4 Reservoir Expansion (Adjacent to Zone 4 Reservoir) 17,270m3 &amp; Pumphouse</li> <li>New PRVs (x9)</li> <li>Acheson Big Lake Water Servicing Study Update - 2025</li> <li>Acheson Big Lake Water Servicing Study Update - 2030</li> <li>Acheson Big Lake Water Servicing Study Update - 2035</li> <li>Acheson Big Lake Water Servicing Study Update - 2040</li> <li>Zone 5 &amp; 7 East-West Distribution Main</li> </ul>	<ul style="list-style-type: none"> <li>Acheson Trunk North of CN Railway (Sewer Main upsizing, etc.)</li> <li>Zone 5 Liftstation Upgrade &amp; Acheson Trunk Upstream of Zone 5 Liftstation (Sewer Main Upsizing, etc.)</li> <li>Acheson Big Lake Sanitary Servicing Study Update - 2020</li> <li>Acheson Big Lake Sanitary Servicing Study Update - 2027</li> <li>Acheson Big Lake Sanitary Servicing Study Update - 2032</li> <li>Acheson Big Lake Sanitary Servicing Study Update - 2037</li> <li>Acheson Big Lake Sanitary Servicing Study Update - 2042</li> </ul>	<ul style="list-style-type: none"> <li>Outfall</li> <li>Acheson Big Lake Master Drainage Plan Update - 2021</li> <li>Collector Stage 1, Zone 5 N-111 to N-112</li> <li>Collector Stage 1, Zone 5 N-112 to N-113</li> <li>Collector Stage 1, Zone 5 N-113 to N-114</li> <li>Collector Stage 1, Zone 5 N-114 to N-115</li> <li>Collector Stage 1, Zone 5 N-115 to N-116</li> <li>Collector Stage 1, Zone 5 N-116 to N-117</li> <li>Collector Stage 1, Zone 5 N-117 to N-118</li> <li>Collector Stage 1, Zone 5, 6, 7&amp;8 N-118 to N110</li> <li>Collector Stage 1, Zone 5, 6, 7&amp;8 N-110 to N104</li> <li>Acheson Big Lake Master Drainage Plan Update - 2026</li> <li>Acheson Big Lake Master Drainage Plan Update - 2031</li> <li>Acheson Big Lake Master Drainage Plan Update - 2036</li> <li>Acheson Big Lake Master Drainage Plan Update - 2041</li> </ul>
508.0	<ul style="list-style-type: none"> <li>Spruce Valley Road / Hwy 16A Intersection (Acheson Zone 1 &amp; 5)</li> <li>96 Avenue: Hwy 60 to Spruce Valley Road (Acheson Zone 5)</li> <li>96 Avenue / Hwy 60 Intersection (Acheson Zone 5 &amp; 6)</li> <li>Spruce Valley Road: Hwy 16A to Hwy 628 (Acheson Zone 5 &amp; 7)</li> <li>Spruce Valley Road / 96 Avenue Intersection (Acheson Zone 5)</li> <li>96 Avenue / 279 Street Intersection (Acheson Zone 5)</li> <li>279 Street: Hwy 628 to 96 Avenue (Acheson Zone 5 &amp; 7)</li> <li>Acheson Traffic Impact Assessment Update - 2019</li> <li>Acheson Traffic Impact Assessment Update - 2024</li> <li>Acheson Traffic Impact Assessment Update - 2029</li> <li>Acheson Traffic Impact Assessment Update - 2034</li> <li>Acheson Traffic Impact Assessment Update - 2039</li> </ul>	<ul style="list-style-type: none"> <li>Zone 4 Reservoir Expansion (9000m3)</li> <li>Zone 3 New West Acheson Park Reservoir 9000m3 &amp; Pumphouse</li> <li>Zone 3 West Acheson Park Reservoir Expansion 15,000m3</li> <li>Acheson Big Lake Water Servicing Study Update - 2020</li> <li>Zone 5 Water Mains</li> <li>Zone 4 Reservoir Expansion (Adjacent to Zone 4 Reservoir) 17,270m3 &amp; Pumphouse</li> <li>New PRVs (x9)</li> <li>Acheson Big Lake Water Servicing Study Update - 2025</li> <li>Acheson Big Lake Water Servicing Study Update - 2030</li> <li>Acheson Big Lake Water Servicing Study Update - 2035</li> <li>Acheson Big Lake Water Servicing Study Update - 2040</li> <li>Zone 5 &amp; 7 East-West Distribution Main</li> </ul>	<ul style="list-style-type: none"> <li>Leder Development Area (Sewer Main Upsizing, etc.)</li> <li>Acheson Trunk North of CN Railway (Sewer Main upsizing, etc.)</li> <li>Zone 5 Liftstation Upgrade &amp; Acheson Trunk Upstream of Zone 5 Liftstation (Sewer Main Upsizing, etc.)</li> <li>Acheson Big Lake Sanitary Servicing Study Update - 2020</li> <li>Acheson Big Lake Sanitary Servicing Study Update - 2027</li> <li>Acheson Big Lake Sanitary Servicing Study Update - 2032</li> <li>Acheson Big Lake Sanitary Servicing Study Update - 2037</li> <li>Acheson Big Lake Sanitary Servicing Study Update - 2042</li> </ul>	<ul style="list-style-type: none"> <li>Outfall</li> <li>Acheson Big Lake Master Drainage Plan Update - 2021</li> <li>Collector Stage 1, Zone 5 N-111 to N-112</li> <li>Collector Stage 1, Zone 5 N-112 to N-113</li> <li>Collector Stage 1, Zone 5 N-113 to N-114</li> <li>Collector Stage 1, Zone 5 N-114 to N-115</li> <li>Collector Stage 1, Zone 5 N-115 to N-116</li> <li>Collector Stage 1, Zone 5 N-116 to N-117</li> <li>Collector Stage 1, Zone 5 N-117 to N-118</li> <li>Collector Stage 1, Zone 5, 6, 7&amp;8 N-118 to N110</li> <li>Collector Stage 1, Zone 5, 6, 7&amp;8 N-110 to N104</li> <li>Acheson Big Lake Master Drainage Plan Update - 2026</li> <li>Acheson Big Lake Master Drainage Plan Update - 2031</li> <li>Acheson Big Lake Master Drainage Plan Update - 2036</li> <li>Acheson Big Lake Master Drainage Plan Update - 2041</li> </ul>
601.0	<ul style="list-style-type: none"> <li>96 Avenue / Hwy 60 Intersection (Acheson Zone 5 &amp; 6)</li> <li>96th Avenue: Hwy 60 to 231st Street (Zone 6)</li> <li>96th Avenue &amp; 231st Street Intersection (Zone 6)</li> <li>Pinchbeck Rd: Hwy 16A to Hwy 628 (Zone 6 &amp; 8)</li> <li>96th Ave &amp; Pinchbeck Rd Intersection (Zone 6)</li> <li>Acheson Traffic Impact Assessment Update - 2019</li> <li>Acheson Traffic Impact Assessment Update - 2024</li> <li>Acheson Traffic Impact Assessment Update - 2029</li> <li>Acheson Traffic Impact Assessment Update - 2034</li> <li>Acheson Traffic Impact Assessment Update - 2039</li> <li>Bevington/Pinchbeck Rd &amp; Hwy 16A Intersection (Zones 4, 6)</li> </ul>	<ul style="list-style-type: none"> <li>Zone 4 Reservoir Expansion (9000m3)</li> <li>Zone 3 New West Acheson Park Reservoir 9000m3 &amp; Pumphouse</li> <li>Zone 3 West Acheson Park Reservoir Expansion 15,000m3</li> <li>Acheson Big Lake Water Servicing Study Update - 2020</li> <li>Zone 6 Water Mains</li> <li>Zone 4 Reservoir Expansion (Adjacent to Zone 4 Reservoir) 17,270m3 &amp; Pumphouse</li> <li>New PRVs (x9)</li> <li>Acheson Big Lake Water Servicing Study Update - 2025</li> <li>Acheson Big Lake Water Servicing Study Update - 2030</li> <li>Acheson Big Lake Water Servicing Study Update - 2035</li> <li>Acheson Big Lake Water Servicing Study Update - 2040</li> <li>Zone 6 &amp; 8 East-West Distribution Main</li> </ul>	<ul style="list-style-type: none"> <li>Bevington Trunk (Oversizing for Acheson Zone 6)</li> <li>Acheson Big Lake Sanitary Servicing Study Update - 2020</li> <li>Acheson Big Lake Sanitary Servicing Study Update - 2027</li> <li>Acheson Big Lake Sanitary Servicing Study Update - 2032</li> <li>Acheson Big Lake Sanitary Servicing Study Update - 2037</li> <li>Acheson Big Lake Sanitary Servicing Study Update - 2042</li> <li>Bevington Trunk Extension Zone 6 (Oversizing for Zone 8)</li> <li>Zone 6 Liftstation #1 &amp; Forcemain</li> <li>Bevington Trunk Upgrade in Zone 4 (Ultimate)</li> </ul>	<ul style="list-style-type: none"> <li>Outfall</li> <li>Acheson Big Lake Master Drainage Plan Update - 2021</li> <li>Acheson Big Lake Master Drainage Plan Update - 2026</li> <li>Collector Stage 2, Zone 4&amp;6 N-203 to N-104</li> <li>Acheson Big Lake Master Drainage Plan Update - 2031</li> <li>Acheson Big Lake Master Drainage Plan Update - 2036</li> <li>Acheson Big Lake Master Drainage Plan Update - 2041</li> </ul>



Benefiting Area	Transportation	Water	Sanitary	Storm
607.0	<ul style="list-style-type: none"> <li>96 Avenue / Hwy 60 Intersection (Acheson Zone 5 &amp; 6)</li> <li>96th Avenue: Hwy 60 to 231st Street (Zone 6)</li> <li>96th Avenue &amp; 231st Street Intersection (Zone 6)</li> <li>Pinchbeck Rd: Hwy 16A to Hwy 628 (Zone 6 &amp; 8)</li> <li>96th Ave &amp; Pinchbeck Rd Intersection (Zone 6)</li> <li>Acheson Traffic Impact Assessment Update - 2019</li> <li>Acheson Traffic Impact Assessment Update - 2024</li> <li>Acheson Traffic Impact Assessment Update - 2029</li> <li>Acheson Traffic Impact Assessment Update - 2034</li> <li>Acheson Traffic Impact Assessment Update - 2039</li> <li>Bevington/Pinchbeck Rd &amp; Hwy 16A Intersection (Zones 4, 6)</li> </ul>	<ul style="list-style-type: none"> <li>Zone 4 Reservoir Expansion (9000m3)</li> <li>Zone 3 New West Acheson Park Reservoir 9000m3 &amp; Pumphouse</li> <li>Zone 3 West Acheson Park Reservoir Expansion 15,000m3</li> <li>Acheson Big Lake Water Servicing Study Update - 2020</li> <li>Zone 6 Water Mains</li> <li>Zone 4 Reservoir Expansion (Adjacent to Zone 4 Reservoir) 17,270m3 &amp; Pumphouse</li> <li>New PRVs (x9)</li> <li>Acheson Big Lake Water Servicing Study Update - 2025</li> <li>Acheson Big Lake Water Servicing Study Update - 2030</li> <li>Acheson Big Lake Water Servicing Study Update - 2035</li> <li>Acheson Big Lake Water Servicing Study Update - 2040</li> <li>Zone 6 &amp; 8 East-West Distribution Main</li> </ul>	<ul style="list-style-type: none"> <li>Acheson Big Lake Sanitary Servicing Study Update - 2020</li> <li>Acheson Big Lake Sanitary Servicing Study Update - 2027</li> <li>Acheson Big Lake Sanitary Servicing Study Update - 2032</li> <li>Acheson Big Lake Sanitary Servicing Study Update - 2037</li> <li>Acheson Big Lake Sanitary Servicing Study Update - 2042</li> <li>Bevington Trunk Extension Zone 6 (Oversizing for Zone 8)</li> <li>Bevington Trunk Upgrade in Zone 4 (Ultimate)</li> </ul>	<ul style="list-style-type: none"> <li>Acheson Big Lake Master Drainage Plan Update - 2021</li> <li>Acheson Big Lake Master Drainage Plan Update - 2026</li> <li>Acheson Big Lake Master Drainage Plan Update - 2031</li> <li>Acheson Big Lake Master Drainage Plan Update - 2036</li> <li>Acheson Big Lake Master Drainage Plan Update - 2041</li> </ul>
608.0	<ul style="list-style-type: none"> <li>96 Avenue / Hwy 60 Intersection (Acheson Zone 5 &amp; 6)</li> <li>96th Avenue: Hwy 60 to 231st Street (Zone 6)</li> <li>96th Avenue &amp; 231st Street Intersection (Zone 6)</li> <li>Pinchbeck Rd: Hwy 16A to Hwy 628 (Zone 6 &amp; 8)</li> <li>96th Ave &amp; Pinchbeck Rd Intersection (Zone 6)</li> <li>Acheson Traffic Impact Assessment Update - 2019</li> <li>Acheson Traffic Impact Assessment Update - 2024</li> <li>Acheson Traffic Impact Assessment Update - 2029</li> <li>Acheson Traffic Impact Assessment Update - 2034</li> <li>Acheson Traffic Impact Assessment Update - 2039</li> <li>Bevington/Pinchbeck Rd &amp; Hwy 16A Intersection (Zones 4, 6)</li> </ul>	<ul style="list-style-type: none"> <li>Zone 4 Reservoir Expansion (9000m3)</li> <li>Zone 3 New West Acheson Park Reservoir 9000m3 &amp; Pumphouse</li> <li>Zone 3 West Acheson Park Reservoir Expansion 15,000m3</li> <li>Acheson Big Lake Water Servicing Study Update - 2020</li> <li>Zone 6 Water Mains</li> <li>Zone 4 Reservoir Expansion (Adjacent to Zone 4 Reservoir) 17,270m3 &amp; Pumphouse</li> <li>New PRVs (x9)</li> <li>Acheson Big Lake Water Servicing Study Update - 2025</li> <li>Acheson Big Lake Water Servicing Study Update - 2030</li> <li>Acheson Big Lake Water Servicing Study Update - 2035</li> <li>Acheson Big Lake Water Servicing Study Update - 2040</li> <li>Zone 6 &amp; 8 East-West Distribution Main</li> </ul>	<ul style="list-style-type: none"> <li>Bevington Trunk (Oversizing for Acheson Zone 6)</li> <li>Acheson Big Lake Sanitary Servicing Study Update - 2020</li> <li>Acheson Big Lake Sanitary Servicing Study Update - 2027</li> <li>Acheson Big Lake Sanitary Servicing Study Update - 2032</li> <li>Acheson Big Lake Sanitary Servicing Study Update - 2037</li> <li>Acheson Big Lake Sanitary Servicing Study Update - 2042</li> <li>Bevington Trunk Extension Zone 6 (Oversizing for Zone 8)</li> <li>Zone 6 Liftstation #1 &amp; Forcemain</li> <li>Zone 6 Liftstation #5 &amp; Forcemain including LS #1 Upgrades</li> <li>Bevington Trunk Upgrade in Zone 4 (Ultimate)</li> </ul>	<ul style="list-style-type: none"> <li>Outfall</li> <li>Acheson Big Lake Master Drainage Plan Update - 2021</li> <li>Acheson Big Lake Master Drainage Plan Update - 2026</li> <li>Collector Stage 2, Zone 4&amp;6 N-203 to N-104</li> <li>Acheson Big Lake Master Drainage Plan Update - 2031</li> <li>Acheson Big Lake Master Drainage Plan Update - 2036</li> <li>Acheson Big Lake Master Drainage Plan Update - 2041</li> </ul>
701.0	<ul style="list-style-type: none"> <li>Spruce Valley Road: Hwy 16A to Hwy 628 (Acheson Zone 5 &amp; 7)</li> <li>92 Avenue / Hwy 60 Intersection (Acheson Zone 7 &amp; 8)</li> <li>92 Avenue: Highway 60 to Spruce Valley Road (Acheson Zone 7)</li> <li>92 Avenue / Spruce Valley Road Intersection (Acheson Zone 7)</li> <li>92 Avenue / 279 Street Intersection (Acheson Zone 7)</li> <li>279 Street: Hwy 628 to 96 Avenue (Acheson Zone 5 &amp; 7)</li> <li>Acheson Traffic Impact Assessment Update - 2019</li> <li>Acheson Traffic Impact Assessment Update - 2024</li> <li>Acheson Traffic Impact Assessment Update - 2029</li> <li>Acheson Traffic Impact Assessment Update - 2034</li> <li>Acheson Traffic Impact Assessment Update - 2039</li> </ul>	<ul style="list-style-type: none"> <li>Zone 4 Reservoir Expansion (9000m3)</li> <li>Zone 3 New West Acheson Park Reservoir 9000m3 &amp; Pumphouse</li> <li>Zone 3 West Acheson Park Reservoir Expansion 15,000m3</li> <li>Acheson Big Lake Water Servicing Study Update - 2020</li> <li>Zone 7 Water Mains</li> <li>Zone 4 Reservoir Expansion (Adjacent to Zone 4 Reservoir) 17,270m3 &amp; Pumphouse</li> <li>New PRVs (x9)</li> <li>Acheson Big Lake Water Servicing Study Update - 2025</li> <li>Acheson Big Lake Water Servicing Study Update - 2030</li> <li>Acheson Big Lake Water Servicing Study Update - 2035</li> <li>Acheson Big Lake Water Servicing Study Update - 2040</li> <li>Zone 5 &amp; 7 East-West Distribution Main</li> </ul>	<ul style="list-style-type: none"> <li>Acheson Trunk North of CN Railway (Sewer Main upsizing, etc.)</li> <li>Zone 5 Liftstation Upgrade &amp; Acheson Trunk Upstream of Zone 5 Lifstation (Sewer Main Upsizing, etc.)</li> <li>Acheson Trunk Extension from DS MH N267 to US MH N672 (Zone 7)</li> <li>Acheson Big Lake Sanitary Servicing Study Update - 2020</li> <li>Acheson Big Lake Sanitary Servicing Study Update - 2027</li> <li>Acheson Big Lake Sanitary Servicing Study Update - 2032</li> <li>Acheson Big Lake Sanitary Servicing Study Update - 2037</li> <li>Acheson Big Lake Sanitary Servicing Study Update - 2042</li> <li>Zone 7 collector main (Area 701 &amp; 702)</li> <li>Acheson Trunk Upgrade - 96th Street to Zone 5 Liftstation</li> </ul>	<ul style="list-style-type: none"> <li>Outfall</li> <li>Acheson Big Lake Master Drainage Plan Update - 2021</li> <li>Collector Stage 1, Zone 5,6,7&amp;8 N-118 to N110</li> <li>Collector Stage 1, Zone 5,6,7&amp;8 N-110 to N104</li> <li>Acheson Big Lake Master Drainage Plan Update - 2026</li> <li>Collector Stage 2, Zone 4&amp;6 N-204 to N-118</li> <li>Acheson Big Lake Master Drainage Plan Update - 2031</li> <li>Acheson Big Lake Master Drainage Plan Update - 2036</li> <li>Collector Stage 3, Zone 7 N-301 to N-302</li> <li>Collector Stage 3, Zone 7 N-302 to N-303</li> <li>Collector Stage 3, Zone 7 N-303 to N-304</li> <li>Collector Stage 3, Zone 7 N-304 to N-305</li> <li>Collector Stage 3, Zone 7 N-305 to N-306</li> <li>Collector Stage 3, Zone 7 N-306 to N-307</li> <li>Acheson Big Lake Master Drainage Plan Update - 2041</li> <li>Collector Stage 3, Zone 7</li> </ul>
702.0	<ul style="list-style-type: none"> <li>Spruce Valley Road: Hwy 16A to Hwy 628 (Acheson Zone 5 &amp; 7)</li> <li>92 Avenue / Hwy 60 Intersection (Acheson Zone 7 &amp; 8)</li> <li>92 Avenue: Highway 60 to Spruce Valley Road (Acheson Zone 7)</li> <li>92 Avenue / Spruce Valley Road Intersection (Acheson Zone 7)</li> <li>92 Avenue / 279 Street Intersection (Acheson Zone 7)</li> <li>279 Street: Hwy 628 to 96 Avenue (Acheson Zone 5 &amp; 7)</li> <li>Acheson Traffic Impact Assessment Update - 2019</li> <li>Acheson Traffic Impact Assessment Update - 2024</li> <li>Acheson Traffic Impact Assessment Update - 2029</li> <li>Acheson Traffic Impact Assessment Update - 2034</li> <li>Acheson Traffic Impact Assessment Update - 2039</li> </ul>	<ul style="list-style-type: none"> <li>Zone 4 Reservoir Expansion (9000m3)</li> <li>Zone 3 New West Acheson Park Reservoir 9000m3 &amp; Pumphouse</li> <li>Zone 3 West Acheson Park Reservoir Expansion 15,000m3</li> <li>Acheson Big Lake Water Servicing Study Update - 2020</li> <li>Zone 7 Water Mains</li> <li>Zone 4 Reservoir Expansion (Adjacent to Zone 4 Reservoir) 17,270m3 &amp; Pumphouse</li> <li>New PRVs (x9)</li> <li>Acheson Big Lake Water Servicing Study Update - 2025</li> <li>Acheson Big Lake Water Servicing Study Update - 2030</li> <li>Acheson Big Lake Water Servicing Study Update - 2035</li> <li>Acheson Big Lake Water Servicing Study Update - 2040</li> <li>Zone 5 &amp; 7 East-West Distribution Main</li> </ul>	<ul style="list-style-type: none"> <li>Acheson Trunk North of CN Railway (Sewer Main upsizing, etc.)</li> <li>Zone 5 Liftstation Upgrade &amp; Acheson Trunk Upstream of Zone 5 Lifstation (Sewer Main Upsizing, etc.)</li> <li>Acheson Trunk Extension from DS MH N267 to US MH N672 (Zone 7)</li> <li>Acheson Big Lake Sanitary Servicing Study Update - 2020</li> <li>Acheson Big Lake Sanitary Servicing Study Update - 2027</li> <li>Acheson Big Lake Sanitary Servicing Study Update - 2032</li> <li>Acheson Big Lake Sanitary Servicing Study Update - 2037</li> <li>Acheson Big Lake Sanitary Servicing Study Update - 2042</li> <li>Zone 7 collector main (Area 701 &amp; 702)</li> <li>Acheson Trunk Upgrade - 96th Street to Zone 5 Liftstation</li> </ul>	<ul style="list-style-type: none"> <li>Outfall</li> <li>Acheson Big Lake Master Drainage Plan Update - 2021</li> <li>Collector Stage 1, Zone 5,6,7&amp;8 N-118 to N110</li> <li>Collector Stage 1, Zone 5,6,7&amp;8 N-110 to N104</li> <li>Acheson Big Lake Master Drainage Plan Update - 2026</li> <li>Collector Stage 2, Zone 4&amp;6 N-204 to N-118</li> <li>Acheson Big Lake Master Drainage Plan Update - 2031</li> <li>Acheson Big Lake Master Drainage Plan Update - 2036</li> <li>Collector Stage 3, Zone 7 N-302 to N-303</li> <li>Collector Stage 3, Zone 7 N-303 to N-304</li> <li>Collector Stage 3, Zone 7 N-304 to N-305</li> <li>Collector Stage 3, Zone 7 N-305 to N-306</li> <li>Collector Stage 3, Zone 7 N-306 to N-307</li> <li>Acheson Big Lake Master Drainage Plan Update - 2041</li> <li>Collector Stage 3, Zone 7</li> </ul>



Benefiting Area	Transportation	Water	Sanitary	Storm
707.0	<ul style="list-style-type: none"> <li>• Spruce Valley Road: Hwy 16A to Hwy 628 (Acheson Zone 5 &amp; 7)</li> <li>• 92 Avenue / Hwy 60 Intersection (Acheson Zone 7 &amp; 8)</li> <li>• 92 Avenue: Highway 60 to Spruce Valley Road (Acheson Zone 7)</li> <li>• 92 Avenue / Spruce Valley Road Intersection (Acheson Zone 7)</li> <li>• 92 Avenue / 279 Street Intersection (Acheson Zone 7)</li> <li>• 279 Street: Hwy 628 to 96 Avenue (Acheson Zone 5 &amp; 7)</li> <li>• Acheson Traffic Impact Assessment Update - 2019</li> <li>• Acheson Traffic Impact Assessment Update - 2024</li> <li>• Acheson Traffic Impact Assessment Update - 2029</li> <li>• Acheson Traffic Impact Assessment Update - 2034</li> <li>• Acheson Traffic Impact Assessment Update - 2039</li> </ul>	<ul style="list-style-type: none"> <li>• Zone 4 Reservoir Expansion (9000m3)</li> <li>• Zone 3 New West Acheson Park Reservoir 9000m3 &amp; Pumphouse</li> <li>• Zone 3 West Acheson Park Reservoir Expansion 15,000m3</li> <li>• Acheson Big Lake Water Servicing Study Update - 2020</li> <li>• Zone 7 Water Mains</li> <li>• Zone 4 Reservoir Expansion (Adjacent to Zone 4 Reservoir) 17,270m3 &amp; Pumphouse</li> <li>• New PRVs (x9)</li> <li>• Acheson Big Lake Water Servicing Study Update - 2025</li> <li>• Acheson Big Lake Water Servicing Study Update - 2030</li> <li>• Acheson Big Lake Water Servicing Study Update - 2035</li> <li>• Acheson Big Lake Water Servicing Study Update - 2040</li> <li>• Zone 5 &amp; 7 East-West Distribution Main</li> </ul>	<ul style="list-style-type: none"> <li>• Acheson Trunk North of CN Railway (Sewer Main upsizing, etc.)</li> <li>• Zone 5 Liftstation Upgrade &amp; Acheson Trunk Upstream of Zone 5 Liftstation (Sewer Main Upsizing, etc.)</li> <li>• Acheson Trunk Extension from DS MH N267 to US MH N672 (Zone 7)</li> <li>• Acheson Big Lake Sanitary Servicing Study Update - 2020</li> <li>• Acheson Big Lake Sanitary Servicing Study Update - 2027</li> <li>• Acheson Big Lake Sanitary Servicing Study Update - 2032</li> <li>• Acheson Big Lake Sanitary Servicing Study Update - 2037</li> <li>• Acheson Big Lake Sanitary Servicing Study Update - 2042</li> <li>• Zone 7 Liftstation #6 &amp; Forcemain</li> <li>• Acheson Trunk Upgrade - 96th Street to Zone 5 Liftstation</li> </ul>	<ul style="list-style-type: none"> <li>• Outfall</li> <li>• Acheson Big Lake Master Drainage Plan Update - 2021</li> <li>• Collector Stage 1, Zone 5,6,7&amp;8 N-118 to N110</li> <li>• Collector Stage 1, Zone 5,6,7&amp;8 N-110 to N104</li> <li>• Acheson Big Lake Master Drainage Plan Update - 2026</li> <li>• Collector Stage 2, Zone 4&amp;6 N-204 to N-118</li> <li>• Acheson Big Lake Master Drainage Plan Update - 2031</li> <li>• Acheson Big Lake Master Drainage Plan Update - 2036</li> <li>• Collector Stage 3, Zone 7 N-303 to N-304</li> <li>• Collector Stage 3, Zone 7 N-304 to N-305</li> <li>• Collector Stage 3, Zone 7 N-305 to N-306</li> <li>• Collector Stage 3, Zone 7 N-306 to N-307</li> <li>• Acheson Big Lake Master Drainage Plan Update - 2041</li> <li>• Collector Stage 3, Zone 7</li> </ul>
708.0	<ul style="list-style-type: none"> <li>• Spruce Valley Road: Hwy 16A to Hwy 628 (Acheson Zone 5 &amp; 7)</li> <li>• 92 Avenue / Hwy 60 Intersection (Acheson Zone 7 &amp; 8)</li> <li>• 92 Avenue: Highway 60 to Spruce Valley Road (Acheson Zone 7)</li> <li>• 92 Avenue / Spruce Valley Road Intersection (Acheson Zone 7)</li> <li>• 92 Avenue / 279 Street Intersection (Acheson Zone 7)</li> <li>• 279 Street: Hwy 628 to 96 Avenue (Acheson Zone 5 &amp; 7)</li> <li>• Acheson Traffic Impact Assessment Update - 2019</li> <li>• Acheson Traffic Impact Assessment Update - 2024</li> <li>• Acheson Traffic Impact Assessment Update - 2029</li> <li>• Acheson Traffic Impact Assessment Update - 2034</li> <li>• Acheson Traffic Impact Assessment Update - 2039</li> </ul>	<ul style="list-style-type: none"> <li>• Zone 4 Reservoir Expansion (9000m3)</li> <li>• Zone 3 New West Acheson Park Reservoir 9000m3 &amp; Pumphouse</li> <li>• Zone 3 West Acheson Park Reservoir Expansion 15,000m3</li> <li>• Acheson Big Lake Water Servicing Study Update - 2020</li> <li>• Zone 7 Water Mains</li> <li>• Zone 4 Reservoir Expansion (Adjacent to Zone 4 Reservoir) 17,270m3 &amp; Pumphouse</li> <li>• New PRVs (x9)</li> <li>• Acheson Big Lake Water Servicing Study Update - 2025</li> <li>• Acheson Big Lake Water Servicing Study Update - 2030</li> <li>• Acheson Big Lake Water Servicing Study Update - 2035</li> <li>• Acheson Big Lake Water Servicing Study Update - 2040</li> <li>• Zone 5 &amp; 7 East-West Distribution Main</li> </ul>	<ul style="list-style-type: none"> <li>• Acheson Trunk North of CN Railway (Sewer Main upsizing, etc.)</li> <li>• Zone 5 Liftstation Upgrade &amp; Acheson Trunk Upstream of Zone 5 Liftstation (Sewer Main Upsizing, etc.)</li> <li>• Acheson Trunk Extension from DS MH N267 to US MH N672 (Zone 7)</li> <li>• Acheson Big Lake Sanitary Servicing Study Update - 2020</li> <li>• Acheson Big Lake Sanitary Servicing Study Update - 2027</li> <li>• Acheson Big Lake Sanitary Servicing Study Update - 2032</li> <li>• Acheson Big Lake Sanitary Servicing Study Update - 2037</li> <li>• Acheson Big Lake Sanitary Servicing Study Update - 2042</li> <li>• Zone 7 Liftstation #6 &amp; Forcemain</li> <li>• Acheson Trunk Upgrade - 96th Street to Zone 5 Liftstation</li> </ul>	<ul style="list-style-type: none"> <li>• Outfall</li> <li>• Acheson Big Lake Master Drainage Plan Update - 2021</li> <li>• Collector Stage 1, Zone 5,6,7&amp;8 N-118 to N110</li> <li>• Collector Stage 1, Zone 5,6,7&amp;8 N-110 to N104</li> <li>• Acheson Big Lake Master Drainage Plan Update - 2026</li> <li>• Collector Stage 2, Zone 4&amp;6 N-204 to N-118</li> <li>• Acheson Big Lake Master Drainage Plan Update - 2031</li> <li>• Acheson Big Lake Master Drainage Plan Update - 2036</li> <li>• Collector Stage 3, Zone 7 N-301 to N-302</li> <li>• Collector Stage 3, Zone 7 N-302 to N-303</li> <li>• Collector Stage 3, Zone 7 N-303 to N-304</li> <li>• Collector Stage 3, Zone 7 N-304 to N-305</li> <li>• Collector Stage 3, Zone 7 N-305 to N-306</li> <li>• Collector Stage 3, Zone 7 N-306 to N-307</li> <li>• Acheson Big Lake Master Drainage Plan Update - 2041</li> <li>• Collector Stage 3, Zone 7</li> </ul>
801.0	<ul style="list-style-type: none"> <li>• 92 Avenue / Hwy 60 Intersection (Acheson Zone 7 &amp; 8)</li> <li>• 92nd Avenue: Hwy 60 to 231st Street (Zone 8)</li> <li>• 92nd Avenue &amp; 231st Street Intersection (Zone 8)</li> <li>• Pinchbeck Rd: Hwy 16A to Hwy 628 (Zone 6 &amp; 8)</li> <li>• 92nd Ave &amp; Pinchbeck Rd Intersection (Zone 8)</li> <li>• Acheson Traffic Impact Assessment Update - 2019</li> <li>• Acheson Traffic Impact Assessment Update - 2024</li> <li>• Acheson Traffic Impact Assessment Update - 2029</li> <li>• Acheson Traffic Impact Assessment Update - 2034</li> <li>• Acheson Traffic Impact Assessment Update - 2039</li> </ul>	<ul style="list-style-type: none"> <li>• Zone 4 Reservoir Expansion (9000m3)</li> <li>• Zone 3 New West Acheson Park Reservoir 9000m3 &amp; Pumphouse</li> <li>• Zone 3 West Acheson Park Reservoir Expansion 15,000m3</li> <li>• Acheson Big Lake Water Servicing Study Update - 2020</li> <li>• Zone 8 Water Mains</li> <li>• Zone 4 Reservoir Expansion (Adjacent to Zone 4 Reservoir) 17,270m3 &amp; Pumphouse</li> <li>• New PRVs (x9)</li> <li>• Acheson Big Lake Water Servicing Study Update - 2025</li> <li>• Acheson Big Lake Water Servicing Study Update - 2030</li> <li>• Acheson Big Lake Water Servicing Study Update - 2035</li> <li>• Acheson Big Lake Water Servicing Study Update - 2040</li> <li>• Zone 6 &amp; 8 East-West Distribution Main</li> </ul>	<ul style="list-style-type: none"> <li>• Bevington Trunk (Oversizing for Acheson Zone 6)</li> <li>• Acheson Big Lake Sanitary Servicing Study Update - 2020</li> <li>• Acheson Big Lake Sanitary Servicing Study Update - 2027</li> <li>• Acheson Big Lake Sanitary Servicing Study Update - 2032</li> <li>• Acheson Big Lake Sanitary Servicing Study Update - 2037</li> <li>• Acheson Big Lake Sanitary Servicing Study Update - 2042</li> <li>• Bevington Trunk Extension Zone 6 (Oversizing for Zone 8)</li> <li>• Bevington Trunk Extension Zone 8</li> <li>• Zone 6 Liftstation #1 &amp; Forcemain</li> <li>• Zone 6 Liftstation #5 &amp; Forcemain including LS #1 Upgrades</li> <li>• Bevington Trunk Upgrade in Zone 4 (Ultimate)</li> </ul>	<ul style="list-style-type: none"> <li>• Outfall</li> <li>• Acheson Big Lake Master Drainage Plan Update - 2021</li> <li>• Collector Stage 1, Zone 5,6,7&amp;8 N-118 to N110</li> <li>• Collector Stage 1, Zone 5,6,7&amp;8 N-110 to N104</li> <li>• Acheson Big Lake Master Drainage Plan Update - 2026</li> <li>• Collector Stage 2, Zone 4&amp;6 N-204 to N-118</li> <li>• Acheson Big Lake Master Drainage Plan Update - 2031</li> <li>• Acheson Big Lake Master Drainage Plan Update - 2036</li> <li>• Acheson Big Lake Master Drainage Plan Update - 2041</li> </ul>
802.0	<ul style="list-style-type: none"> <li>• 92 Avenue / Hwy 60 Intersection (Acheson Zone 7 &amp; 8)</li> <li>• 92nd Avenue: Hwy 60 to 231st Street (Zone 8)</li> <li>• 92nd Avenue &amp; 231st Street Intersection (Zone 8)</li> <li>• Pinchbeck Rd: Hwy 16A to Hwy 628 (Zone 6 &amp; 8)</li> <li>• 92nd Ave &amp; Pinchbeck Rd Intersection (Zone 8)</li> <li>• Acheson Traffic Impact Assessment Update - 2019</li> <li>• Acheson Traffic Impact Assessment Update - 2024</li> <li>• Acheson Traffic Impact Assessment Update - 2029</li> <li>• Acheson Traffic Impact Assessment Update - 2034</li> <li>• Acheson Traffic Impact Assessment Update - 2039</li> </ul>	<ul style="list-style-type: none"> <li>• Zone 4 Reservoir Expansion (9000m3)</li> <li>• Zone 3 New West Acheson Park Reservoir 9000m3 &amp; Pumphouse</li> <li>• Zone 3 West Acheson Park Reservoir Expansion 15,000m3</li> <li>• Acheson Big Lake Water Servicing Study Update - 2020</li> <li>• Zone 8 Water Mains</li> <li>• Zone 4 Reservoir Expansion (Adjacent to Zone 4 Reservoir) 17,270m3 &amp; Pumphouse</li> <li>• New PRVs (x9)</li> <li>• Acheson Big Lake Water Servicing Study Update - 2025</li> <li>• Acheson Big Lake Water Servicing Study Update - 2030</li> <li>• Acheson Big Lake Water Servicing Study Update - 2035</li> <li>• Acheson Big Lake Water Servicing Study Update - 2040</li> <li>• Zone 6 &amp; 8 East-West Distribution Main</li> </ul>	<ul style="list-style-type: none"> <li>• Acheson Big Lake Sanitary Servicing Study Update - 2020</li> <li>• Acheson Big Lake Sanitary Servicing Study Update - 2027</li> <li>• Acheson Big Lake Sanitary Servicing Study Update - 2032</li> <li>• Acheson Big Lake Sanitary Servicing Study Update - 2037</li> <li>• Acheson Big Lake Sanitary Servicing Study Update - 2042</li> <li>• Bevington Trunk Extension Zone 6 (Oversizing for Zone 8)</li> <li>• Bevington Trunk Extension Zone 8</li> <li>• Bevington Trunk Upgrade in Zone 4 (Ultimate)</li> </ul>	<ul style="list-style-type: none"> <li>• Outfall</li> <li>• Acheson Big Lake Master Drainage Plan Update - 2021</li> <li>• Collector Stage 1, Zone 5,6,7&amp;8 N-118 to N110</li> <li>• Collector Stage 1, Zone 5,6,7&amp;8 N-110 to N104</li> <li>• Acheson Big Lake Master Drainage Plan Update - 2026</li> <li>• Collector Stage 2, Zone 4&amp;6 N-204 to N-118</li> <li>• Acheson Big Lake Master Drainage Plan Update - 2031</li> <li>• Acheson Big Lake Master Drainage Plan Update - 2036</li> <li>• Collector Stage 3, Zone 8 N-307 to N-204</li> <li>• Collector Stage 3, Zone 8 N-308 to N-307</li> <li>• Acheson Big Lake Master Drainage Plan Update - 2041</li> </ul>















Benefiting Area	Transportation	Water	Sanitary	Storm
1201.0	<ul style="list-style-type: none"> <li>Hwy 779 / New Service Road Intersection (5th Meridian ASP)</li> <li>Hwy 779 / Proposed Road (5th Meridian ASP)</li> </ul>	<ul style="list-style-type: none"> <li>5th Meridian - Supply Line From Regional Line</li> <li>5th Meridian - Water Reservoir</li> </ul>		
1202.0	<ul style="list-style-type: none"> <li>Hwy 779 / New Service Road Intersection (5th Meridian ASP)</li> <li>Hwy 779 / Proposed Road (5th Meridian ASP)</li> </ul>	<ul style="list-style-type: none"> <li>5th Meridian - Supply Line From Regional Line</li> <li>5th Meridian - Water Reservoir</li> <li>5th Meridian (Area B) - Water Mains</li> </ul>	<ul style="list-style-type: none"> <li>5th Meridian (Area B) Gravity Main</li> </ul>	
1203.0	<ul style="list-style-type: none"> <li>Hwy 779 / New Service Road Intersection (5th Meridian ASP)</li> <li>Hwy 779 / Proposed Road (5th Meridian ASP)</li> </ul>	<ul style="list-style-type: none"> <li>5th Meridian - Supply Line From Regional Line</li> <li>5th Meridian - Water Reservoir</li> <li>5th Meridian (Area A) - Water Mains</li> </ul>	<ul style="list-style-type: none"> <li>5th Meridian (Area A) Gravity Main</li> </ul>	
1204.0	<ul style="list-style-type: none"> <li>Hwy 779 / New Service Road Intersection (5th Meridian ASP)</li> <li>Hwy 779 / Proposed Road (5th Meridian ASP)</li> </ul>	<ul style="list-style-type: none"> <li>5th Meridian - Supply Line From Regional Line</li> <li>5th Meridian - Water Reservoir</li> </ul>		
1205.0	<ul style="list-style-type: none"> <li>Hwy 779 / New Service Road Intersection (5th Meridian ASP)</li> <li>Hwy 779 / Proposed Road (5th Meridian ASP)</li> </ul>	<ul style="list-style-type: none"> <li>5th Meridian - Supply Line From Regional Line</li> <li>5th Meridian - Water Reservoir</li> </ul>		
1301.0	<ul style="list-style-type: none"> <li>Hwy 779 / New Service Road Intersection (5th Meridian ASP)</li> <li>Hwy 779 / Proposed Road (5th Meridian ASP)</li> <li>Golf Course Road (5th Meridian ASP)</li> <li>New Proposed Road (5th Meridian ASP)</li> </ul>	<ul style="list-style-type: none"> <li>5th Meridian - Supply Line From Regional Line</li> <li>5th Meridian - Water Reservoir</li> <li>5th Meridian (Area B) - Water Mains</li> </ul>	<ul style="list-style-type: none"> <li>5th Meridian (Area B) Gravity Main</li> </ul>	
1302.0	<ul style="list-style-type: none"> <li>Hwy 779 / New Service Road Intersection (5th Meridian ASP)</li> <li>Hwy 779 / Proposed Road (5th Meridian ASP)</li> <li>Golf Course Road (5th Meridian ASP)</li> <li>New Proposed Road (5th Meridian ASP)</li> </ul>	<ul style="list-style-type: none"> <li>5th Meridian - Supply Line From Regional Line</li> <li>5th Meridian - Water Reservoir</li> <li>5th Meridian (Area B) - Water Mains</li> </ul>	<ul style="list-style-type: none"> <li>5th Meridian (Area B) Gravity Main</li> </ul>	
1303.0	<ul style="list-style-type: none"> <li>Hwy 779 / New Service Road Intersection (5th Meridian ASP)</li> <li>Hwy 779 / Proposed Road (5th Meridian ASP)</li> <li>Golf Course Road (5th Meridian ASP)</li> <li>New Proposed Road (5th Meridian ASP)</li> </ul>	<ul style="list-style-type: none"> <li>5th Meridian - Supply Line From Regional Line</li> <li>5th Meridian - Water Reservoir</li> </ul>		
1304.0	<ul style="list-style-type: none"> <li>Hwy 779 / New Service Road Intersection (5th Meridian ASP)</li> <li>Hwy 779 / Proposed Road (5th Meridian ASP)</li> <li>Golf Course Road (5th Meridian ASP)</li> <li>New Proposed Road (5th Meridian ASP)</li> </ul>	<ul style="list-style-type: none"> <li>5th Meridian - Supply Line From Regional Line</li> <li>5th Meridian - Water Reservoir</li> <li>5th Meridian (Area A) - Water Mains</li> </ul>	<ul style="list-style-type: none"> <li>5th Meridian (Area A) Gravity Main</li> </ul>	
1401.0	<ul style="list-style-type: none"> <li>Hwy 779 / New Service Road Intersection (5th Meridian ASP)</li> <li>Hwy 779 / Proposed Road (5th Meridian ASP)</li> <li>Golf Course Road (5th Meridian ASP)</li> <li>New Proposed Road (5th Meridian ASP)</li> </ul>	<ul style="list-style-type: none"> <li>5th Meridian - Supply Line From Regional Line</li> <li>5th Meridian - Water Reservoir</li> <li>5th Meridian (Area B) - Water Mains</li> </ul>	<ul style="list-style-type: none"> <li>5th Meridian (Area B) Gravity Main</li> </ul>	
1402.0	<ul style="list-style-type: none"> <li>Hwy 779 / New Service Road Intersection (5th Meridian ASP)</li> <li>Hwy 779 / Proposed Road (5th Meridian ASP)</li> <li>Golf Course Road (5th Meridian ASP)</li> <li>New Proposed Road (5th Meridian ASP)</li> </ul>	<ul style="list-style-type: none"> <li>5th Meridian - Supply Line From Regional Line</li> <li>5th Meridian - Water Reservoir</li> <li>5th Meridian (Area C) - Water Mains</li> </ul>	<ul style="list-style-type: none"> <li>5th Meridian (Area C) Gravity Main</li> </ul>	
1403.0	<ul style="list-style-type: none"> <li>Hwy 779 / New Service Road Intersection (5th Meridian ASP)</li> <li>Hwy 779 / Proposed Road (5th Meridian ASP)</li> <li>Golf Course Road (5th Meridian ASP)</li> <li>New Proposed Road (5th Meridian ASP)</li> </ul>	<ul style="list-style-type: none"> <li>5th Meridian - Supply Line From Regional Line</li> <li>5th Meridian - Water Reservoir</li> <li>5th Meridian (Area C) - Water Mains</li> </ul>	<ul style="list-style-type: none"> <li>5th Meridian (Area C) Gravity Main</li> </ul>	
1404.0	<ul style="list-style-type: none"> <li>Hwy 779 / New Service Road Intersection (5th Meridian ASP)</li> <li>Hwy 779 / Proposed Road (5th Meridian ASP)</li> <li>Golf Course Road (5th Meridian ASP)</li> <li>New Proposed Road (5th Meridian ASP)</li> </ul>	<ul style="list-style-type: none"> <li>5th Meridian - Supply Line From Regional Line</li> <li>5th Meridian - Water Reservoir</li> <li>5th Meridian (Area C) - Water Mains</li> </ul>	<ul style="list-style-type: none"> <li>5th Meridian (Area C) Gravity Main</li> </ul>	
1405.0	<ul style="list-style-type: none"> <li>Hwy 779 / New Service Road Intersection (5th Meridian ASP)</li> <li>Hwy 779 / Proposed Road (5th Meridian ASP)</li> <li>Golf Course Road (5th Meridian ASP)</li> <li>New Proposed Road (5th Meridian ASP)</li> </ul>	<ul style="list-style-type: none"> <li>5th Meridian - Supply Line From Regional Line</li> <li>5th Meridian - Water Reservoir</li> <li>5th Meridian (Area C) - Water Mains</li> </ul>	<ul style="list-style-type: none"> <li>5th Meridian (Area C) Gravity Main</li> </ul>	
1501.0	<ul style="list-style-type: none"> <li>Spruce Valley Road / Hwy 16A Intersection (Acheson Zone 1 &amp; 5)</li> <li>Spruce Valley Road: Hwy 16A to Hwy 628 (Acheson Zone 5 &amp; 7)</li> <li>Spruce Valley Road / 96 Avenue Intersection (Acheson Zone 5)</li> <li>Acheson Traffic Impact Assessment Update - 2019</li> <li>Acheson Traffic Impact Assessment Update - 2024</li> <li>Acheson Traffic Impact Assessment Update - 2029</li> <li>Acheson Traffic Impact Assessment Update - 2034</li> <li>Acheson Traffic Impact Assessment Update - 2039</li> <li>96th Ave: Spruce Valley Rd to Sandhills Rd (Acheson Zone 5 West)</li> </ul>	<ul style="list-style-type: none"> <li>Zone 4 Reservoir Expansion (9000m3)</li> <li>Zone 3 New West Acheson Park Reservoir 9000m3 &amp; Pumphouse</li> <li>Zone 3 West Acheson Park Reservoir Expansion 15,000m3</li> <li>Acheson Big Lake Water Servicing Study Update - 2020</li> <li>Zone 4 Reservoir Expansion (Adjacent to Zone 4 Reservoir) 17,270m3 &amp; Pumphouse</li> <li>New PRVs (x9)</li> <li>Acheson Big Lake Water Servicing Study Update - 2025</li> <li>Acheson Big Lake Water Servicing Study Update - 2030</li> <li>Acheson Big Lake Water Servicing Study Update - 2035</li> <li>Acheson Big Lake Water Servicing Study Update - 2040</li> <li>West Acheson South Water Distribution Mains (1501, 1502, 1112, 1113)</li> </ul>	<ul style="list-style-type: none"> <li>Leder Development Area (Sewer Main Upsizing, etc.)</li> <li>Acheson Trunk North of CN Railway (Sewer Main upsizing, etc.)</li> <li>Zone 5 Liftstation Upgrade &amp; Acheson Trunk Upstream of Zone 5 Liftstation (Sewer Main Upsizing, etc.)</li> <li>Acheson Big Lake Sanitary Servicing Study Update - 2020</li> <li>Acheson Big Lake Sanitary Servicing Study Update - 2027</li> <li>Acheson Big Lake Sanitary Servicing Study Update - 2032</li> <li>Acheson Big Lake Sanitary Servicing Study Update - 2037</li> <li>Acheson Big Lake Sanitary Servicing Study Update - 2042</li> <li>Area 15 Liftstation #3 &amp; Forcemain</li> </ul>	<ul style="list-style-type: none"> <li>Acheson Big Lake Master Drainage Plan Update - 2021</li> <li>Acheson Big Lake Master Drainage Plan Update - 2026</li> <li>Acheson Big Lake Master Drainage Plan Update - 2031</li> <li>Acheson Big Lake Master Drainage Plan Update - 2036</li> <li>Acheson Big Lake Master Drainage Plan Update - 2041</li> </ul>



Benefiting Area	Transportation	Water	Sanitary	Storm
1600.5	<ul style="list-style-type: none"> <li>• 114 Avenue: Hwy 44 to Hwy 60 (Acheson Zone 1)</li> <li>• 114 Avenue / Hwy 60 Intersection (Acheson Zone 1 &amp; 2)</li> <li>• 114 Avenue: Bevington Road to 231 Street (Acheson Zone 2)</li> <li>• Bevington Road: 114 Avenue to CN Crossing (Acheson Zone 2)</li> <li>• 114 Avenue / 231 Street Intersection (Acheson Zone 2 &amp; Winterburn)</li> <li>• 114 Avenue: Hwy 60 to Bevington Road (Acheson Zone 2)</li> <li>• Acheson Traffic Impact Assessment Update - 2019</li> <li>• Acheson Traffic Impact Assessment Update - 2024</li> <li>• Acheson Traffic Impact Assessment Update - 2029</li> <li>• Acheson Traffic Impact Assessment Update - 2034</li> <li>• Acheson Traffic Impact Assessment Update - 2039</li> </ul>	<ul style="list-style-type: none"> <li>• Zone 4 Reservoir Expansion (9000m3)</li> <li>• Zone 3 Pump Upgrade</li> <li>• Zone 3 Pump Upgrade</li> <li>• Zone 3 New West Acheson Park Reservoir 9000m3 &amp; Pumphouse</li> <li>• Zone 3 West Acheson Park Reservoir Expansion 15,000m3</li> <li>• Zone 2 Water Mains (Near future, long term, and ultimate)</li> <li>• Acheson Big Lake Water Servicing Study Update - 2020</li> <li>• Zone 4 Reservoir Expansion (Adjacent to Zone 4 Reservoir) 17,270m3 &amp; Pumphouse</li> <li>• New PRVs (x9)</li> <li>• Acheson Big Lake Water Servicing Study Update - 2025</li> <li>• Acheson Big Lake Water Servicing Study Update - 2030</li> <li>• Acheson Big Lake Water Servicing Study Update - 2035</li> <li>• Acheson Big Lake Water Servicing Study Update - 2040</li> </ul>	<ul style="list-style-type: none"> <li>• Bevington Trunk (Hwy 16 A to Hwy 16 Parkland Industrial Estates)</li> <li>• Acheson Big Lake Sanitary Servicing Study Update - 2020</li> <li>• Acheson Big Lake Sanitary Servicing Study Update - 2027</li> <li>• Acheson Big Lake Sanitary Servicing Study Update - 2032</li> <li>• Acheson Big Lake Sanitary Servicing Study Update - 2037</li> <li>• Acheson Big Lake Sanitary Servicing Study Update - 2042</li> </ul>	<ul style="list-style-type: none"> <li>• Acheson Big Lake Master Drainage Plan Update - 2021</li> <li>• Acheson Big Lake Master Drainage Plan Update - 2026</li> <li>• Acheson Big Lake Master Drainage Plan Update - 2031</li> <li>• Acheson Big Lake Master Drainage Plan Update - 2036</li> <li>• Acheson Big Lake Master Drainage Plan Update - 2041</li> </ul>
1600.6	<ul style="list-style-type: none"> <li>• 114 Avenue: Hwy 44 to Hwy 60 (Acheson Zone 1)</li> <li>• 114 Avenue / Hwy 60 Intersection (Acheson Zone 1 &amp; 2)</li> <li>• 114 Avenue: Bevington Road to 231 Street (Acheson Zone 2)</li> <li>• Bevington Road: 114 Avenue to CN Crossing (Acheson Zone 2)</li> <li>• 114 Avenue / 231 Street Intersection (Acheson Zone 2 &amp; Winterburn)</li> <li>• 114 Avenue: Hwy 60 to Bevington Road (Acheson Zone 2)</li> <li>• Acheson Traffic Impact Assessment Update - 2019</li> <li>• Acheson Traffic Impact Assessment Update - 2024</li> <li>• Acheson Traffic Impact Assessment Update - 2029</li> <li>• Acheson Traffic Impact Assessment Update - 2034</li> <li>• Acheson Traffic Impact Assessment Update - 2039</li> </ul>	<ul style="list-style-type: none"> <li>• Zone 4 Reservoir Expansion (9000m3)</li> <li>• Zone 3 New West Acheson Park Reservoir 9000m3 &amp; Pumphouse</li> <li>• Zone 3 West Acheson Park Reservoir Expansion 15,000m3</li> <li>• Zone 2 Water Mains (Near future, long term, and ultimate)</li> <li>• Acheson Big Lake Water Servicing Study Update - 2020</li> <li>• Zone 4 Reservoir Expansion (Adjacent to Zone 4 Reservoir) 17,270m3 &amp; Pumphouse</li> <li>• New PRVs (x9)</li> <li>• Acheson Big Lake Water Servicing Study Update - 2025</li> <li>• Acheson Big Lake Water Servicing Study Update - 2030</li> <li>• Acheson Big Lake Water Servicing Study Update - 2035</li> <li>• Acheson Big Lake Water Servicing Study Update - 2040</li> </ul>	<ul style="list-style-type: none"> <li>• Bevington Trunk (Hwy 16 A to Hwy 16 Parkland Industrial Estates)</li> <li>• Acheson Big Lake Sanitary Servicing Study Update - 2020</li> <li>• Acheson Big Lake Sanitary Servicing Study Update - 2027</li> <li>• Acheson Big Lake Sanitary Servicing Study Update - 2032</li> <li>• Acheson Big Lake Sanitary Servicing Study Update - 2037</li> <li>• Acheson Big Lake Sanitary Servicing Study Update - 2042</li> </ul>	<ul style="list-style-type: none"> <li>• Acheson Big Lake Master Drainage Plan Update - 2021</li> <li>• Acheson Big Lake Master Drainage Plan Update - 2026</li> <li>• Acheson Big Lake Master Drainage Plan Update - 2031</li> <li>• Acheson Big Lake Master Drainage Plan Update - 2036</li> <li>• Acheson Big Lake Master Drainage Plan Update - 2041</li> </ul>
1600.7	<ul style="list-style-type: none"> <li>• Acheson Road / Hwy 60 Intersection (Acheson Zone 3 &amp; 4)</li> <li>• Acheson Road: Hwy 60 to 231 Street (Acheson Zone 4 &amp; Winterburn)</li> <li>• Bevington Road: CN Crossing to Hwy 16A (Acheson Zone 4)</li> <li>• Acheson Road / Bevington Road Intersection (Acheson Zone 4)</li> <li>• Acheson Road / 231 Street Intersection (Acheson Zone 4 &amp; Winterburn)</li> <li>• Acheson Traffic Impact Assessment Update - 2019</li> <li>• Acheson Traffic Impact Assessment Update - 2024</li> <li>• Acheson Traffic Impact Assessment Update - 2029</li> <li>• Acheson Traffic Impact Assessment Update - 2034</li> <li>• Acheson Traffic Impact Assessment Update - 2039</li> <li>• Bevington/Pinchbeck Rd &amp; Hwy 16A Intersection (Zones 4, 6)</li> </ul>	<ul style="list-style-type: none"> <li>• Zone 4 Reservoir Expansion (9000m3)</li> <li>• Zone 3 Pump Upgrade</li> <li>• Zone 3 Pump Upgrade</li> <li>• Zone 3 New West Acheson Park Reservoir 9000m3 &amp; Pumphouse</li> <li>• Zone 3 West Acheson Park Reservoir Expansion 15,000m3</li> <li>• Acheson Big Lake Water Servicing Study Update - 2020</li> <li>• Zone 4 Water Mains</li> <li>• Zone 4 Reservoir Expansion (Adjacent to Zone 4 Reservoir) 17,270m3 &amp; Pumphouse</li> <li>• New PRVs (x9)</li> <li>• Acheson Big Lake Water Servicing Study Update - 2025</li> <li>• Acheson Big Lake Water Servicing Study Update - 2030</li> <li>• Acheson Big Lake Water Servicing Study Update - 2035</li> <li>• Acheson Big Lake Water Servicing Study Update - 2040</li> </ul>	<ul style="list-style-type: none"> <li>• Bevington Trunk (Hwy 16 A to Hwy 16 Parkland Industrial Estates)</li> <li>• Acheson Big Lake Sanitary Servicing Study Update - 2020</li> <li>• Acheson Big Lake Sanitary Servicing Study Update - 2027</li> <li>• Acheson Big Lake Sanitary Servicing Study Update - 2032</li> <li>• Acheson Big Lake Sanitary Servicing Study Update - 2037</li> <li>• Acheson Big Lake Sanitary Servicing Study Update - 2042</li> </ul>	<ul style="list-style-type: none"> <li>• Acheson Big Lake Master Drainage Plan Update - 2021</li> <li>• Acheson Big Lake Master Drainage Plan Update - 2026</li> <li>• Acheson Big Lake Master Drainage Plan Update - 2031</li> <li>• Acheson Big Lake Master Drainage Plan Update - 2036</li> <li>• Acheson Big Lake Master Drainage Plan Update - 2041</li> </ul>
1600.8	<ul style="list-style-type: none"> <li>• Acheson Road / Hwy 60 Intersection (Acheson Zone 3 &amp; 4)</li> <li>• Acheson Road: Hwy 60 to 231 Street (Acheson Zone 4 &amp; Winterburn)</li> <li>• Bevington Road: CN Crossing to Hwy 16A (Acheson Zone 4)</li> <li>• Acheson Road / Bevington Road Intersection (Acheson Zone 4)</li> <li>• Acheson Road / 231 Street Intersection (Acheson Zone 4 &amp; Winterburn)</li> <li>• Acheson Traffic Impact Assessment Update - 2019</li> <li>• Acheson Traffic Impact Assessment Update - 2024</li> <li>• Acheson Traffic Impact Assessment Update - 2029</li> <li>• Acheson Traffic Impact Assessment Update - 2034</li> <li>• Acheson Traffic Impact Assessment Update - 2039</li> <li>• Bevington/Pinchbeck Rd &amp; Hwy 16A Intersection (Zones 4, 6)</li> </ul>	<ul style="list-style-type: none"> <li>• Zone 4 Reservoir Expansion (9000m3)</li> <li>• Zone 3 Pump Upgrade</li> <li>• Zone 3 Pump Upgrade</li> <li>• Zone 3 New West Acheson Park Reservoir 9000m3 &amp; Pumphouse</li> <li>• Zone 3 West Acheson Park Reservoir Expansion 15,000m3</li> <li>• Acheson Big Lake Water Servicing Study Update - 2020</li> <li>• Zone 4 Water Mains</li> <li>• Zone 4 Reservoir Expansion (Adjacent to Zone 4 Reservoir) 17,270m3 &amp; Pumphouse</li> <li>• New PRVs (x9)</li> <li>• Acheson Big Lake Water Servicing Study Update - 2025</li> <li>• Acheson Big Lake Water Servicing Study Update - 2030</li> <li>• Acheson Big Lake Water Servicing Study Update - 2035</li> <li>• Acheson Big Lake Water Servicing Study Update - 2040</li> </ul>	<ul style="list-style-type: none"> <li>• Acheson Road (Sewer Main Upsizing, etc.)</li> <li>• Bevington Trunk (Hwy 16 A to Hwy 16 Parkland Industrial Estates)</li> <li>• Old Bylaw #52-2003 (A1 - Acheson Trunk)</li> <li>• Acheson Trunk North of CN Railway (Sewer Main upsizing, etc.)</li> <li>• Acheson Zone East Upsizing (Near Future) Triggered by 3-53-26-4</li> <li>• Acheson Big Lake Sanitary Servicing Study Update - 2020</li> <li>• Acheson Big Lake Sanitary Servicing Study Update - 2027</li> <li>• Acheson Big Lake Sanitary Servicing Study Update - 2032</li> <li>• Acheson Big Lake Sanitary Servicing Study Update - 2037</li> <li>• Acheson Big Lake Sanitary Servicing Study Update - 2042</li> </ul>	<ul style="list-style-type: none"> <li>• Outfall</li> <li>• Acheson Big Lake Master Drainage Plan Update - 2021</li> <li>• Acheson Big Lake Master Drainage Plan Update - 2026</li> <li>• Acheson Big Lake Master Drainage Plan Update - 2031</li> <li>• Acheson Big Lake Master Drainage Plan Update - 2036</li> <li>• Acheson Big Lake Master Drainage Plan Update - 2041</li> </ul>