

ENTWISTLE SCHOOL

HOME OF THE TWISTERS



Entwistle School will offer the opportunity for students to learn in a positive environment.

To: Community Facility Enhancement Program
Attn: To Whom it May Concern
Re: Friends of Entwistle Learning Society Grant Application

Project Name and Description:

The Entwistle School Playground Project

The project involves the removal of an existing playground structure and the construction of a new playground located at the school site, designed to serve the school and the surrounding community.

The project is being spearheaded by the Entwistle School Council & Friends of Entwistle Learning Society in consultation with school staff and Parkland School Division. We are attempting to get this playground constructed before the end of the 2013-2014 school year.

Rationale:

Entwistle School and the Entwistle Community are in need of a new playground. The current playground structure at Entwistle School is utilized by a large number of children in the hamlet, but is in dreadful condition. The structure is old, made of (arsenic) treated wood and galvanized metal (see the accompanying picture). It is limited in terms of its accessibility for children of all ages and limited in terms of usable components. The wood has deteriorated and children often get splinters from the wooden components of the structure. Within the City of Spruce Grove this type of equipment no longer meets safety standards and has been removed. This equipment has not been removed from Entwistle School site because there is the need for a playground and we have been unable to replace it. We are now looking to replace the playground with a safer and more dynamic structure that will have components to be enjoyed by children of all ages.

Entwistle School is located approximately ninety-five kilometers west of Edmonton along the Yellowhead highway. The school is owned by Parkland School Division #70. During the 2012-2013 school year, Entwistle School has had approximately 125 students (Kindergarten – Grade 9) registered. We also have a Playschool with approximately 20 students. The playground project will serve all children in the Entwistle community, not just those from the school.

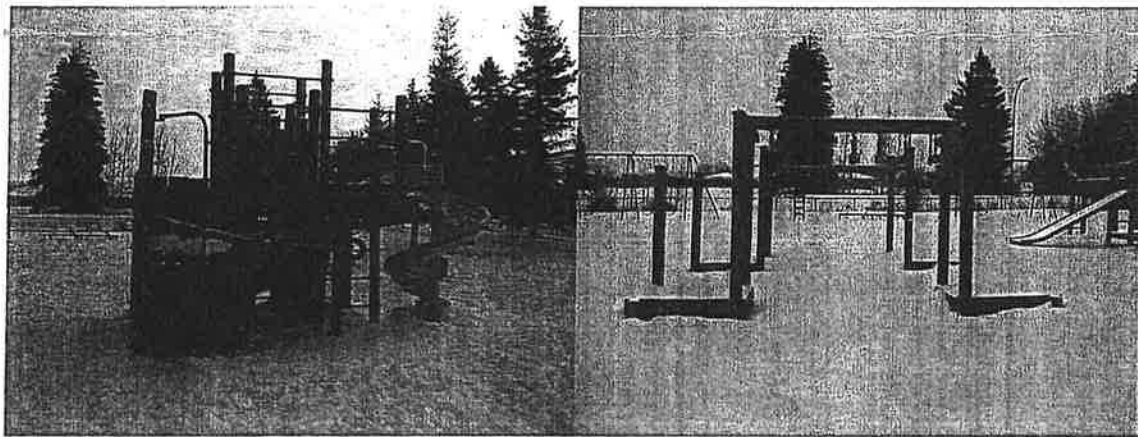
Entwistle is a lower socio-economic area with a transient population. Many parents have part-time or seasonal employment, they may work more than one lower paying job or they may be unemployed. The transient nature of the community is related to the stability of the Alberta and local economy. That is, residency is more stable when the economy is more stable.



Since Entwistle has a lower income base, as a small school, it is difficult to carry out large numbers of fund raising projects to help support school programs. Also, there are limited businesses within the community from which to access support. The number of services for children are limited and spread thinly as a result of the high need within the school and community.

Location of the Project:

The playground is located at Entwistle School, in the hamlet of Entwistle. The school is central to the community and the playground is a hub for all community children who are looking for a place to play. (Please see the attached map showing the location of the school and the proposed playground area)



Sincerely,

A handwritten signature in cursive script, reading "Mr. Les Worthington".

Mr. Les Worthington
Principal Entwistle School
Parkland School Division #70