



# Wabamun Watershed Management Council

PRESENTATION TO PARKLAND COUNTY  
GOVERNANCE AND PRIORITIES COMMITTEE

MAY 3/2022

SUE STYLES - WWMC BOARD CHAIR

# Purpose

- ▶ To increase awareness of the [Wabamun Lake Watershed Management Plan](#)
- ▶ To make recommendations for Parkland County to further collaborate with the Wabamun Watershed Management Council (WWMC) on protecting the health of Wabamun Lake and watershed

# Outline

- ▶ Introduction to Wabamun Watershed Management Council (WWMC)
- ▶ Wabamun Lake Watershed Management Plan (WLWMP)
  - ▶ Vision
  - ▶ Objectives
- ▶ **3 Priorities and Recommendations for Parkland County Collaboration with WWMC**
  - ▶ Wabamun Area Vision
  - ▶ Land Use Bylaw Revision
  - ▶ Riparian Restoration
- ▶ **Conclusion**

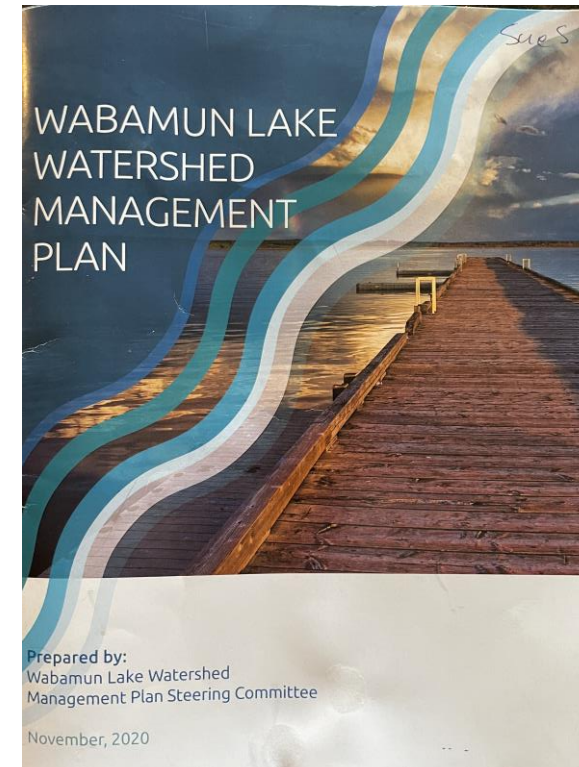
# Introduction

## Wabamun Watershed Management Council



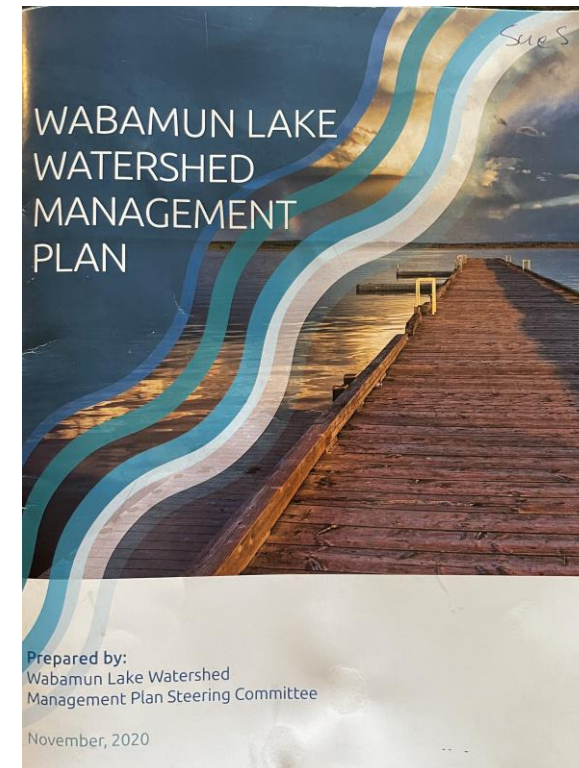
# WLWMP Vision

- ▶ *The Wabamun Lake watershed is a healthy ecosystem with a robust economy and a thriving community that actively demonstrates its collective responsibility to steward the lake environment, for current and future generations.*



# WLWMP Objectives

- ▶ 1. Good Water Quality
- ▶ 2. Healthy Aquatic Ecosystems and Biodiversity
- ▶ 3. Wise Land Use
- ▶ 4. Engaged Stewardship





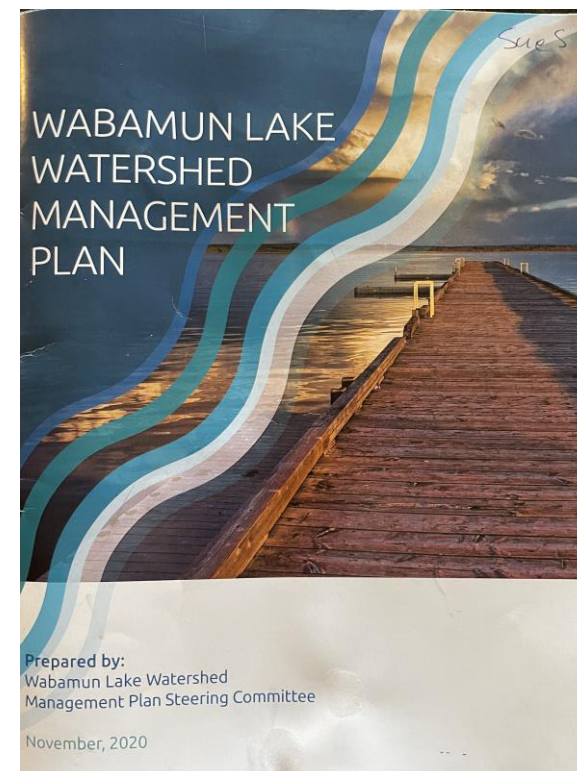
# Advancing WLWMP Objectives

Convergence of numerous pressures impacting the health of Wabamun Lake and watershed:

**Economic growth in the area**

**Urbanization**

**Climate change**



3 Priorities for Parkland County Collaboration with the WWMC to protect Wabamun Lake and watershed

1. Wabamun  
Area Vision

2. Land Use  
Bylaw Revision

3. Riparian  
Restoration



# 1. Wabamun Area Vision



# 1. Wabamun Area Vision

Recommendation:

Parkland County engage with WWMC throughout each step of the Wabamun Area Vision-ing process to support protection of Wabamun Lake and watershed.

## 2. Land Use Bylaws Revision

Multiple municipalities in the Wabamun Watershed

Parkland County

Summer Village of Seba Beach

Summer Village of Kapasiwin

Summer Village of Lakeview

Summer Village of Betula Beach

Summer Village of Point Alison

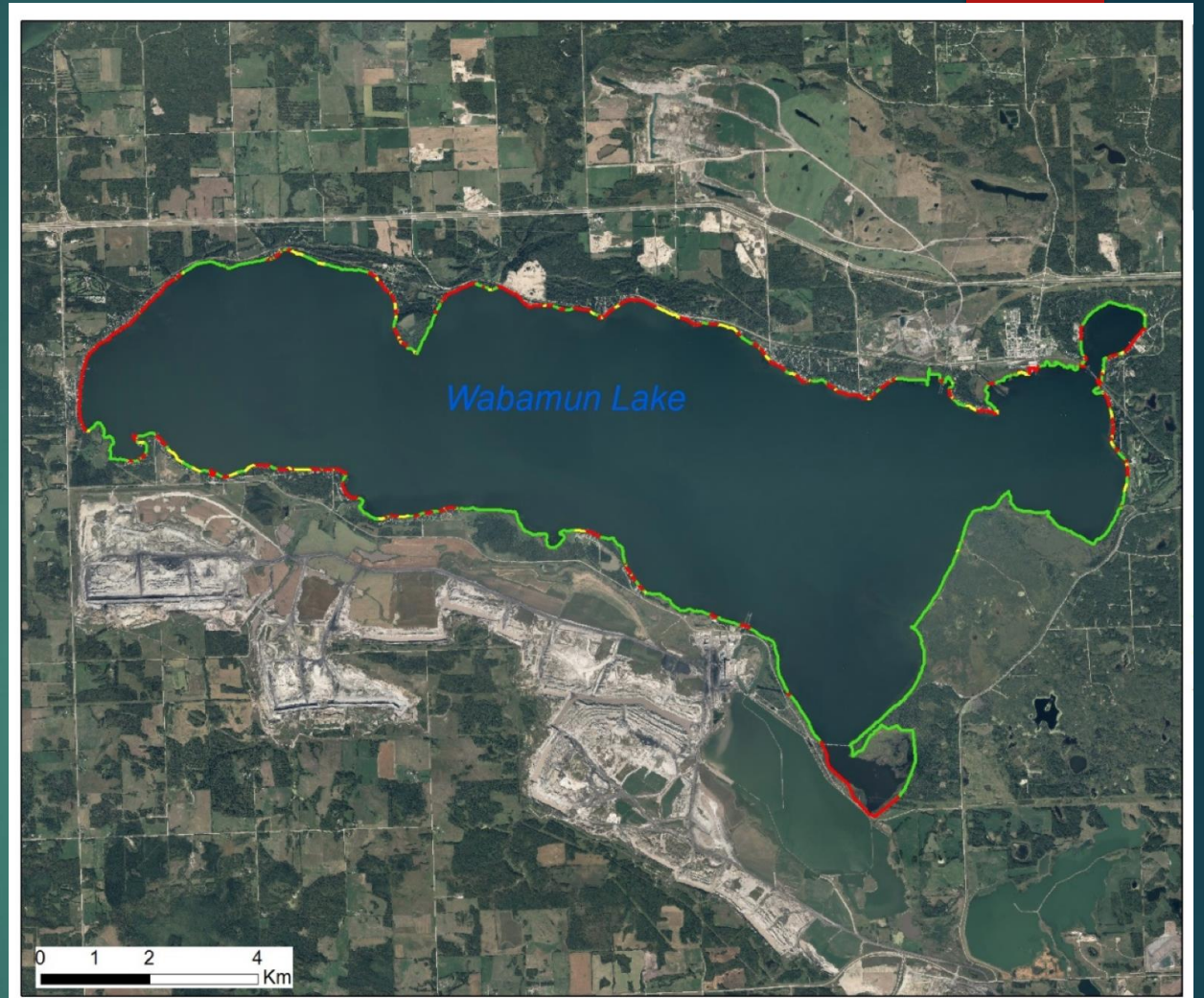
Advocacy for alignment of bylaws and policies that support the protection of Wabamun Lake and Watershed

## 2. Land Use Bylaw Revision

Recommendation:

To support alignment of bylaws and policies in the protection of Wabamun Lake and watershed and, also inform the Wabamun Area Vision, Parkland County create a **Model Land Use Bylaw** to guide development of Wabamun Lake and watershed

### 3. Riparian Restoration



#### Results of Wabamun Lake Riparian Health Assessment (2014)

Green= Healthy (57%);  
yellow= Moderately Impaired (7%); red=Highly Impaired (34%)

# 3. Riparian Restoration

Recommendation:

Parkland County collaborate with WWMC to develop a Wabamun Lake riparian restoration plan to conserve and restore riparian areas on Wabamun Lake.



# Review of Recommendations

## ▶ 1. Wabamun Area Vision

- ▶ Parkland County engage with WWMC throughout each step of the Wabamun Area Vision-ing process to support protection of Wabamun Lake and watershed.

## ▶ 2. Land Use Bylaw Revision

- ▶ To support alignment of bylaws and policies in the protection of Wabamun Lake and watershed and, also inform the Wabamun Area Vision, Parkland County create a **Model Land Use bylaw** to guide development of Wabamun Lake and watershed

## ▶ 3. Riparian Restoration

- ▶ Parkland County collaborate with WWMC to develop a Wabamun Lake riparian restoration plan to conserve and restore riparian areas on Wabamun Lake.



## If the Wabamun Area Vision is

*...premised on healthy and well-connected ecologies for all generations.*

*...energized by diverse, year-round economic drivers and employment.*

*...with an exciting collection of recreation sites and amenities.*

*...strategically planned to create a connected rural region.*

*...sharing its community spirit to attract a wide range of families and lifestyles.*

*...widely known as a beautiful, unique, and accessible regional destination.*

Then,

we must have the **wisdom, courage and tenacity** to make critical decisions today to protect the lake and watershed!

# Wabamun Watershed Management Council

Thank you!

Questions?

- ▶ Sue Styles - WWMC Board Chair  
[styles.seba@telus.net](mailto:styles.seba@telus.net)
- ▶ [info@wwmc.ca](mailto:info@wwmc.ca)
- ▶ [www.Wwmc.ca](http://www.Wwmc.ca)

