

ALUS CANADA

Supporting ALUS in Parkland

Presented by:

Bryan Gilvesy
CEO
ALUS Canada

and

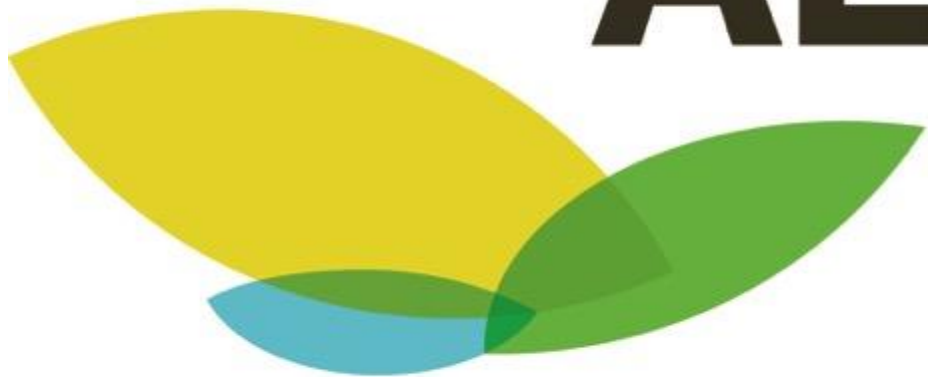
Howie Bjorge
Ag. Fieldman
ALUS Canada



A Weston Family Initiative

ALUS

Canada



A Weston Family Initiative





ALUS is the umbrella organization under which 20 community organizations now operate.







ALUS Canada Briefing Note – Updated January 12, 2018

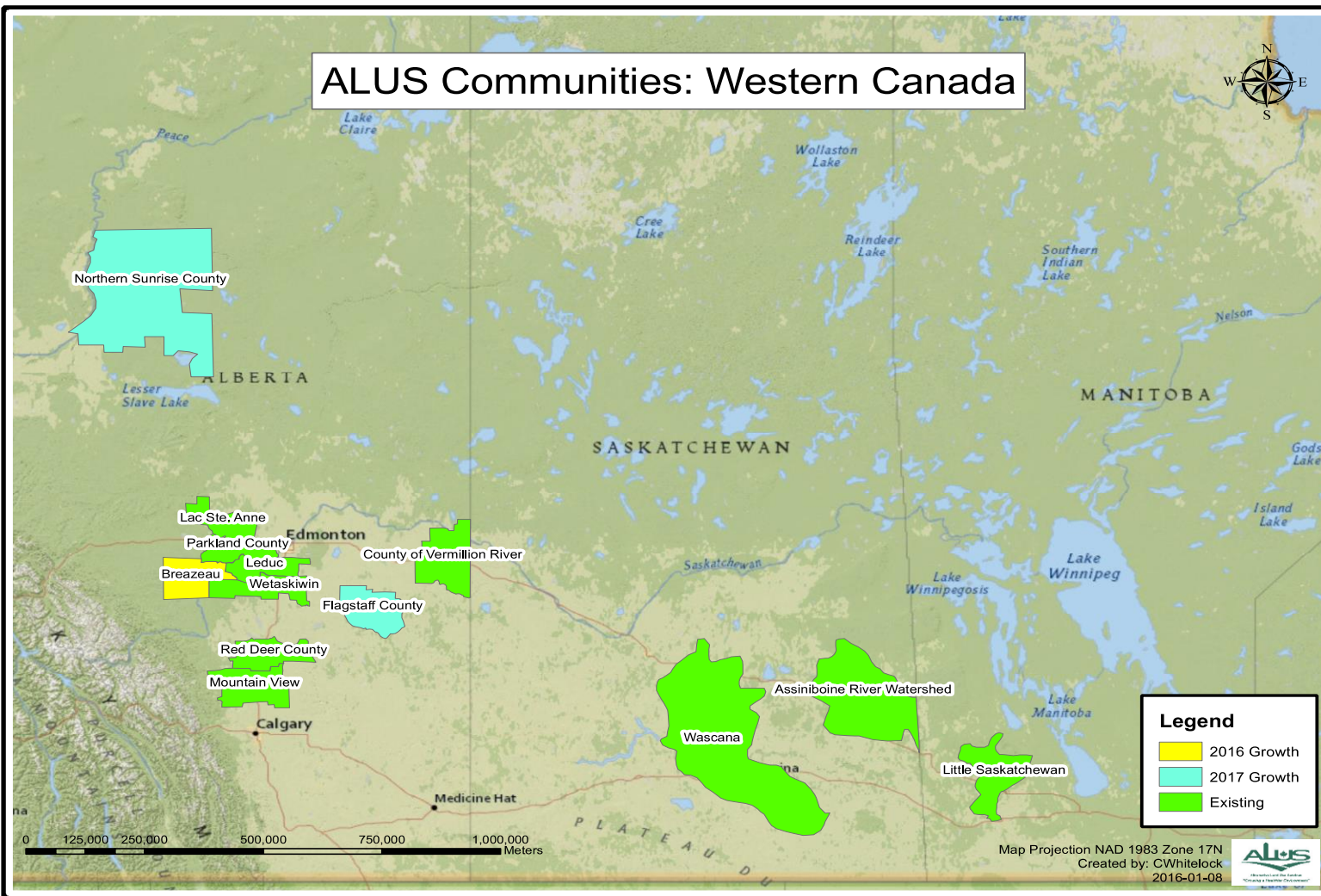
ALUS Communities and Collaborators in Alberta - 2017

Since its adoption by the County of Vermilion River in 2010, ALUS has grown into a total of 11 municipalities by 2017:

- Parkland County
- Red Deer County
- Mountain View County
- Brazeau County
- Lac Ste. Anne County
- Wetaskiwin County
- Leduc County
- Northern Sunrise County
- Flagstaff County
- Lacombe County



ALUS Communities: Western Canada



ALUS Acre Outcomes in Alberta to Date

To the end of 2017, farmers and ranchers have enhanced over 8,500 acres of ecosystem services through their ALUS projects in Alberta, described in Table 1.

In 2018, we anticipate that an additional 1,600 new acres of ecosystem services will be enhanced in Alberta.

Table 1 — Total Number of Acres to Date, by Project Type

Total Number of Acres to Date (Estimate)*	
Grassland	2,606.46
Modified Agricultural Practices	2,180.73
Trees and Shrubs	1,848.07
<u>Waterbody</u>	2,449.57
Total	9,084.82





ALUS acres to date

Grassland: 359 acres

Modified Ag: 59 acres

Trees and Shrubs: 321 acres

Waterbody: 137 acres

TOTAL 876 acres



Pollinator Eco-Buffer

Project Example, Parkland County 2016



Project Description

Pre-Project Land Management

The property is managed as a cornmaze which caters to both urban and country residential customers. The project area was cultivated as part of the cornmaze, transitioning to grass as the land slopes toward the creek. Prior to grain cultivation, the grassed slope was pastured. Meadowlarks were reported present in the 1980s, but have been absent since.

Project

Deciduous and coniferous trees were planted in a scattered formation to improve wildlife habitat and provide an eco-buffer between the cropland and creek. The trees were planted on the most steeply sloped portion of the project and connected to the forested buffer to the east of the project. The project was designed by ALUS partner, the Agroforestry and Woodlot Extension Society (AWES).

On the mostly flat portion of the existing grassland buffer, an ecobuffer was planted using a mixture of 46 species of trees, shrubs, grasses, and forbs, creating a 100m long buffer designed to produce numerous ecosystem services. The ecobuffer was designed by AWES to be self-sustaining and provide habitat and food sources for pollinators and insectivores.



ALUS CANADA COMMUNITY FLOWS



- Money to deliver a proven model
- Proprietary data base, GIS, templates etc.
- Program support
- Connectivity
- Project delivery manual (cookbook)
- Communications
- Policy development
- Business development
- Research
- Market access



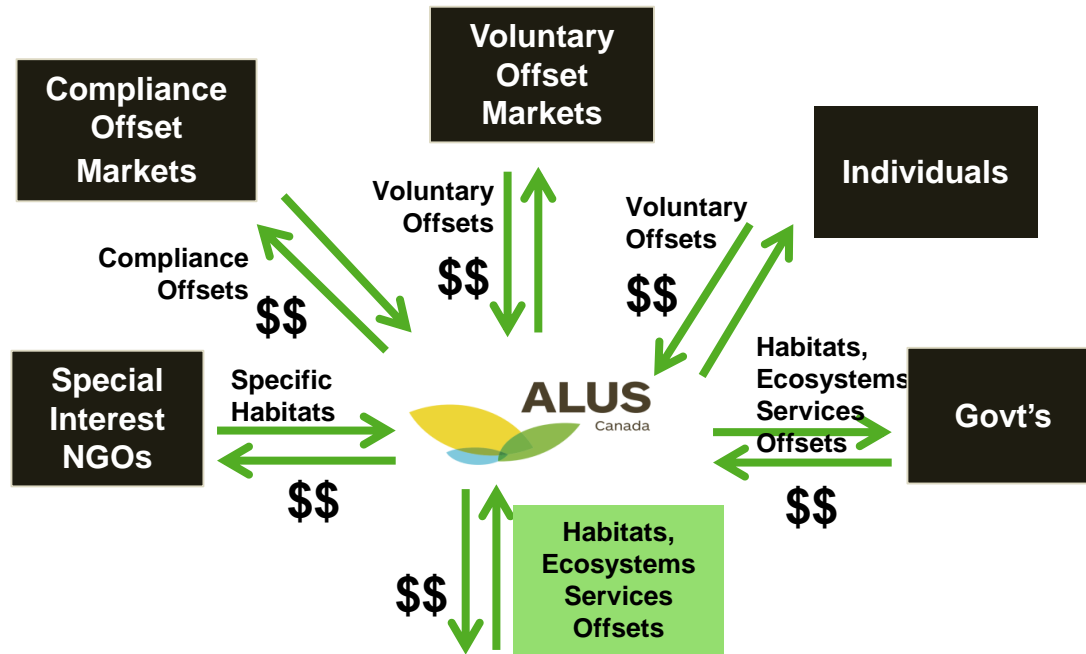
- Acres (ecosystem services)
- Budgeting and target setting
- Financial reporting
- Recognition
- PAC engagement



ALUS PROGRAM POWER THROUGH P.A.C.S.



Revenue
and
Delivery
Flows



Expenditure
and Benefit
Flows



ALUS
Canada





Alberta philanthropist David Bissett and ALUS Canada, a Weston Family Initiative, announce the "Bissett Action Fund," a \$500,000 gift which will support nearly 1,000 acres of ALUS projects.



Alberta

Alberta Wetland Policy: A Shift in Values

Thorsten Hebben
Policy Division, ESRD

Alberta Environment and Sustainable Resource Development
2013



Alberta Environment
and Parks



Natural Infrastructure Project: *How much can investing in ALUS reduce downstream infrastructure costs?*

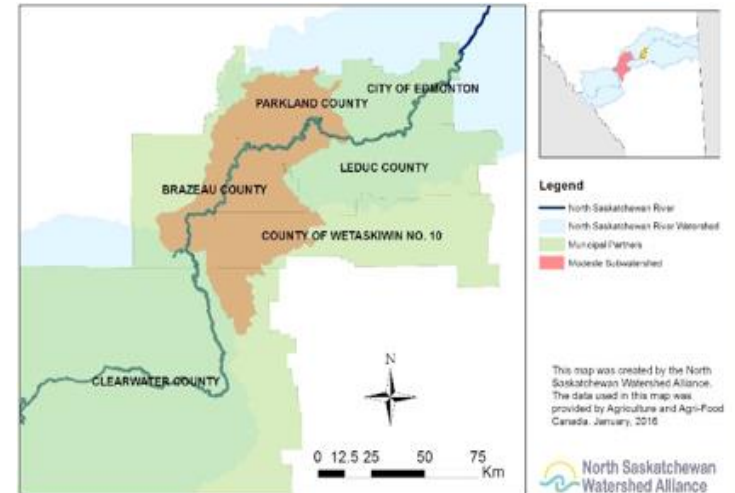
Project Development Partners: *Parkland County; North SK Watershed Alliance; Headwaters Alliance; Parkland, Leduc-Wetaskiwin and Brazeau ALUS*

Watershed Modelling and Analysis: **University of Guelph:**

Economic Analysis: **AB Innotech**

Funders:  **The City of Edmonton** **EPCOR**
 **Natural Resources Canada**

Proposal sent to **AEP : Watershed Restoration and Resiliency Program** (modelling and on-the-ground restoration)



New AcreTM Project.

Make a difference. Make an acre.

New Acre™ Project.

Make a difference. Make an acre.

Brought to you by
ALUS
conservation
A Weston Family Initiative

☒ I'm a **Corporate Donor**

☐ I'm an Individual Donor

[Our Story](#) • [What is a New Acre™?](#) • [Solutions](#) • [Contact Us](#) •

[Sponsor Now](#)

Beyond Conservation to Production

New Acre™ Project is a next generation, proven model that produces cleaner water, cleaner air and an ecosystem for wildlife habitat.



Incorporate New Acres™ in your
Corporate Sponsorship Portfolio today!

[Sponsor Now](#)

New Acre™ Project.

Make a difference. Make an acre.

Brought to you by
ALUS
Forest
A Weston Family Initiative

☒ I'm a Corporate Donor

☐ I'm an Individual Donor

[Our Story](#) • [What is a New Acre™?](#) • [Solutions](#) • [Contact Us](#) •

[Sponsor Now](#)

Today 18,000 acres in 20 communities



Our company cares about:

- ☐ **Air**
Carbon Sequestration*
Climate Adaptation
- ☐ **Water**
Water Filtration
Erosion Control
Flood Control
Drought Mitigation
- ☐ **Bees**
Pollinator Habitat
- ☐ **Wildlife**
Biodiversity (Wildlife Habitat)
Species-at-risk Habitat
- ☐ **Community**
Community Resilience

*100% of our New Acre™ sequester carbon.

NEW ACRE™ BENEFITS

With your support, farmers and ranchers will dedicate selected acres of marginal farmland to the production of ecosystem services, with significant benefits for the environment, the local community, and society as a whole.



CLEANER AIR

100% of our New Acres™ sequester carbon, ultimately making cleaner air for everyone.



CLEANER WATER

100% of our wetland projects filter water before it flows into streams and lakes, making cleaner water for all our communities.



NEW WILDLIFE HABITATS

100% of our New Acres™ make habitats for wildlife, including pollinators and species at risk, for more biodiversity.

New Acre™ Project.

Make a difference. Make an acre.

HOME

BENEFITS

ABOUT

GET INVOLVED



Brought to you by
ALUS
Canada

A Weston Family Initiative

REBUILDING NATURE, ONE ACRE AT A TIME

New Acre™ Project is brought to you by ALUS Canada, a Weston Family Initiative. ALUS invests in farmers and ranchers producing cleaner air, cleaner water and new wildlife habitats in their communities.



New Acre™ Project.

Make a difference. Make an acre.

[HOME](#)

[BENEFITS](#)

[ABOUT](#)

[GET INVOLVED](#)



Brought to you by



A Weston Family Initiative



HELPING FARMERS & RANCHERS HELP US ALL

The support you provide goes to the farmers and ranchers whose acres produce a variety of ecosystem services in communities across Canada, from Red Deer, Alberta to Saint-Hyacinthe, Quebec.

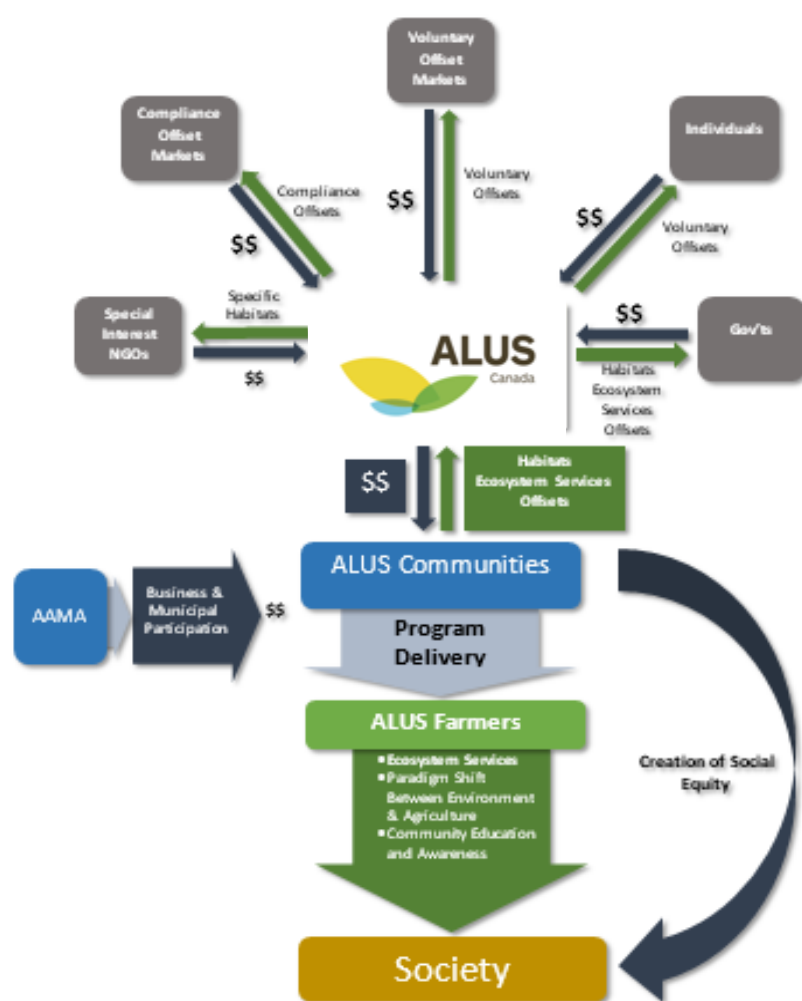
Parkland ASB



Parkland PAC







Investing in and Quantifying the Benefits of Natural Infrastructure on Agricultural Lands in the Modeste Subwatershed

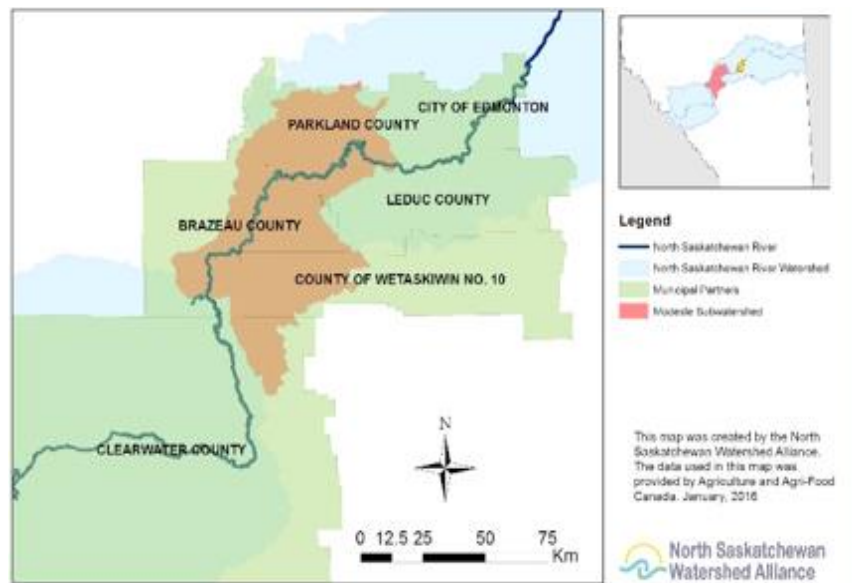
Application to Watershed Resiliency and Restoration Program, Alberta Environment and Parks

October 30, 2017

Applicant: ALUS Canada

Partner Organizations: ALUS Leduc-Wetaskiwin, ALUS Parkland, ALUS Brazeau, Parkland County, North Saskatchewan Watershed Alliance, Headwaters Alliance

Project Research, Modelling and Analysis: University of Guelph, InnoTech Alberta



EPCOR

