

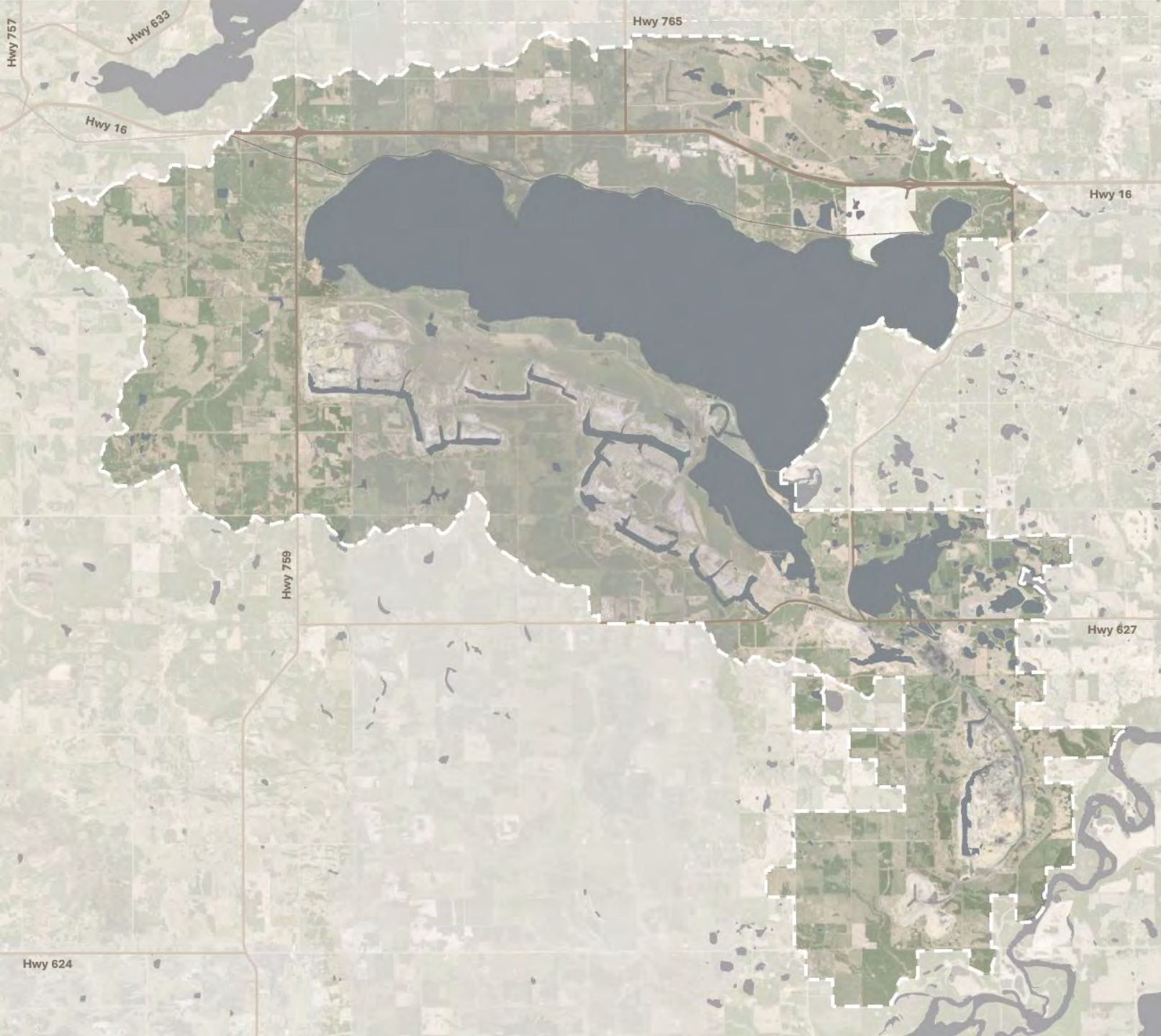


Wabamun Area Vision

Project Summary

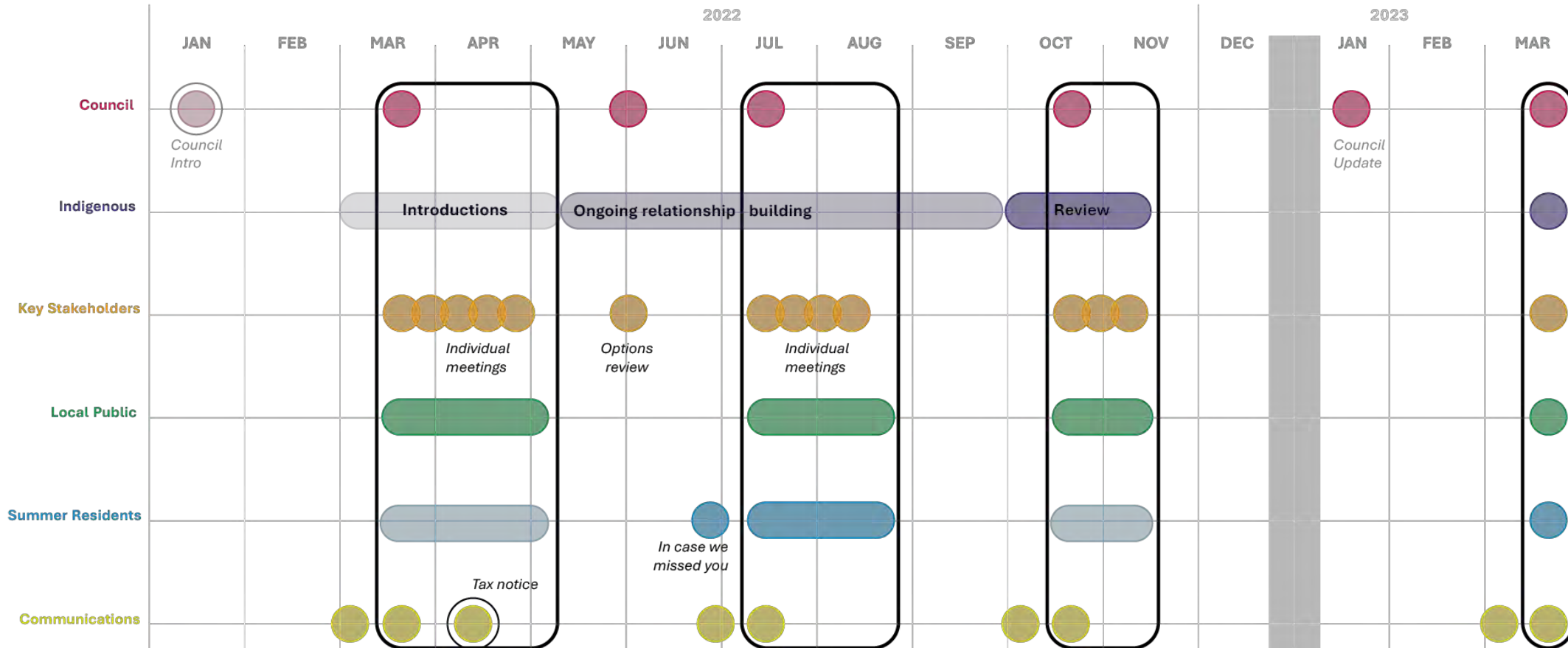


Background

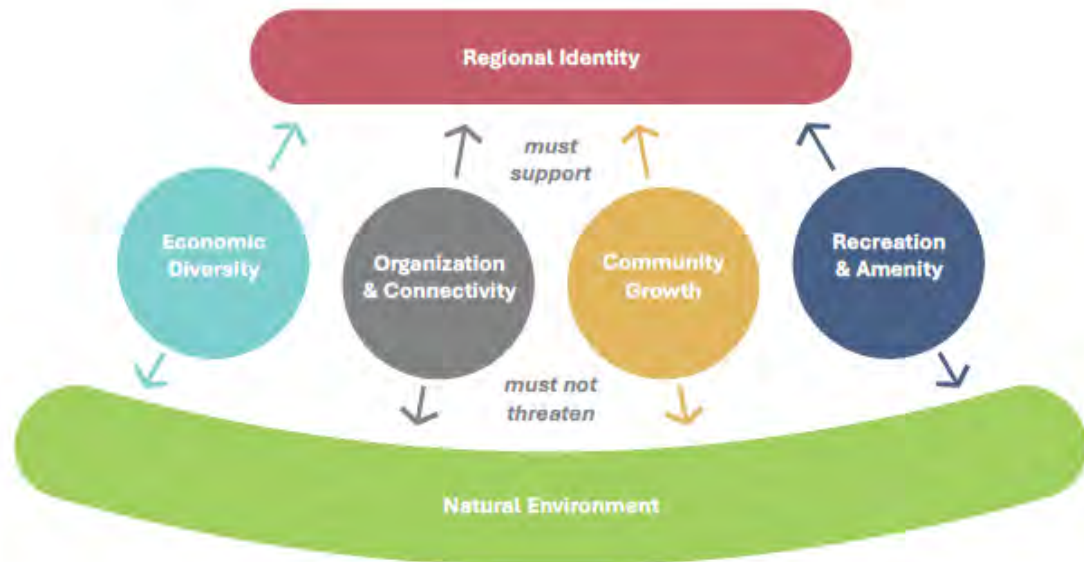


Project Boundary

Engagement Overview



Vision & Pillars



The Wabamun Area will leverage its unique natural and industrial assets to enable its transformation into a thriving regional anchor.

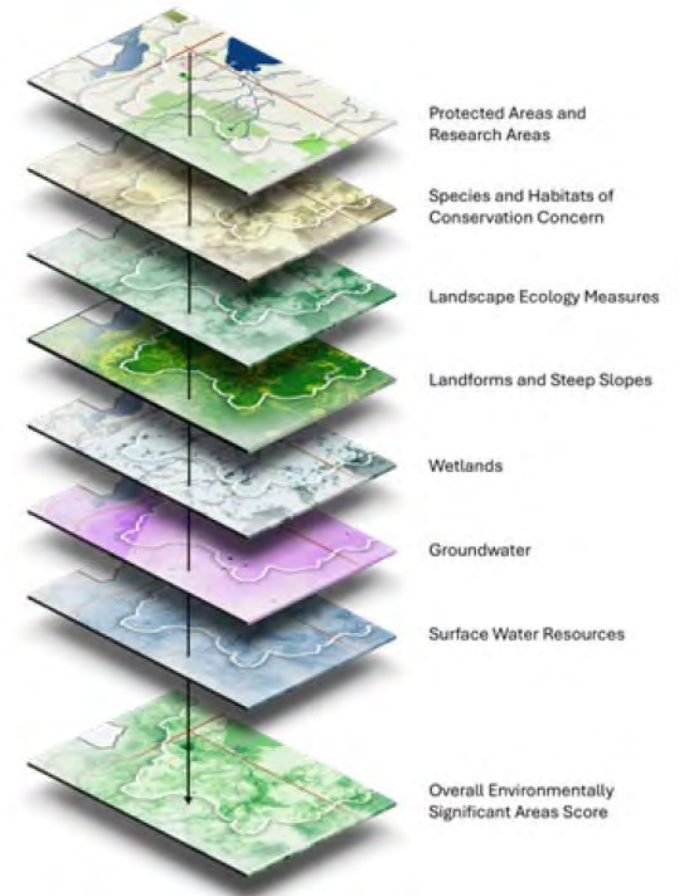
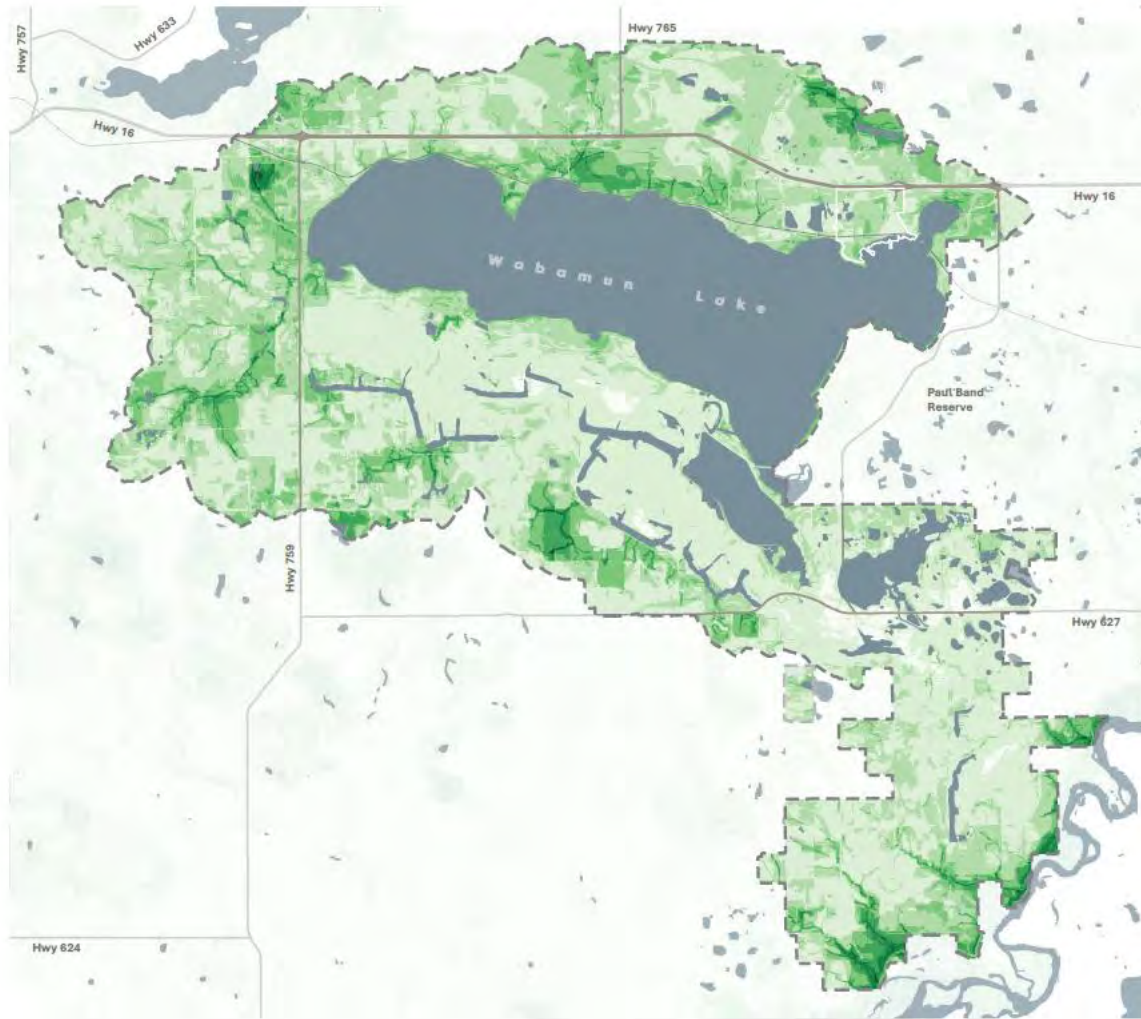
- premised on healthy and well-connected ecologies for all generations
- widely known as a beautiful, unique, and accessible regional destination
- strategically planned to create a well-connected rural region
- sharing its community spirit to attract a wide range of families and lifestyles
- energized by diverse, year-round economic drivers and employment
- with an exciting collection of recreation sites and amenities



Analysis Summary

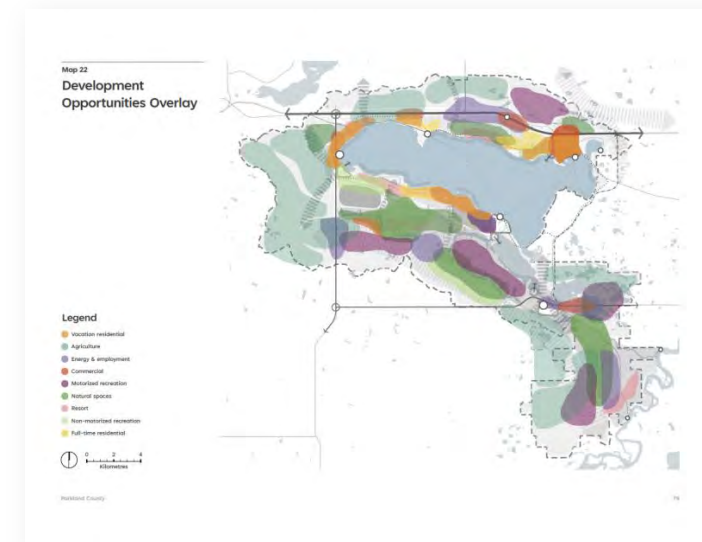
Natural Systems Overview

Map 06
Current Environmental
Significance



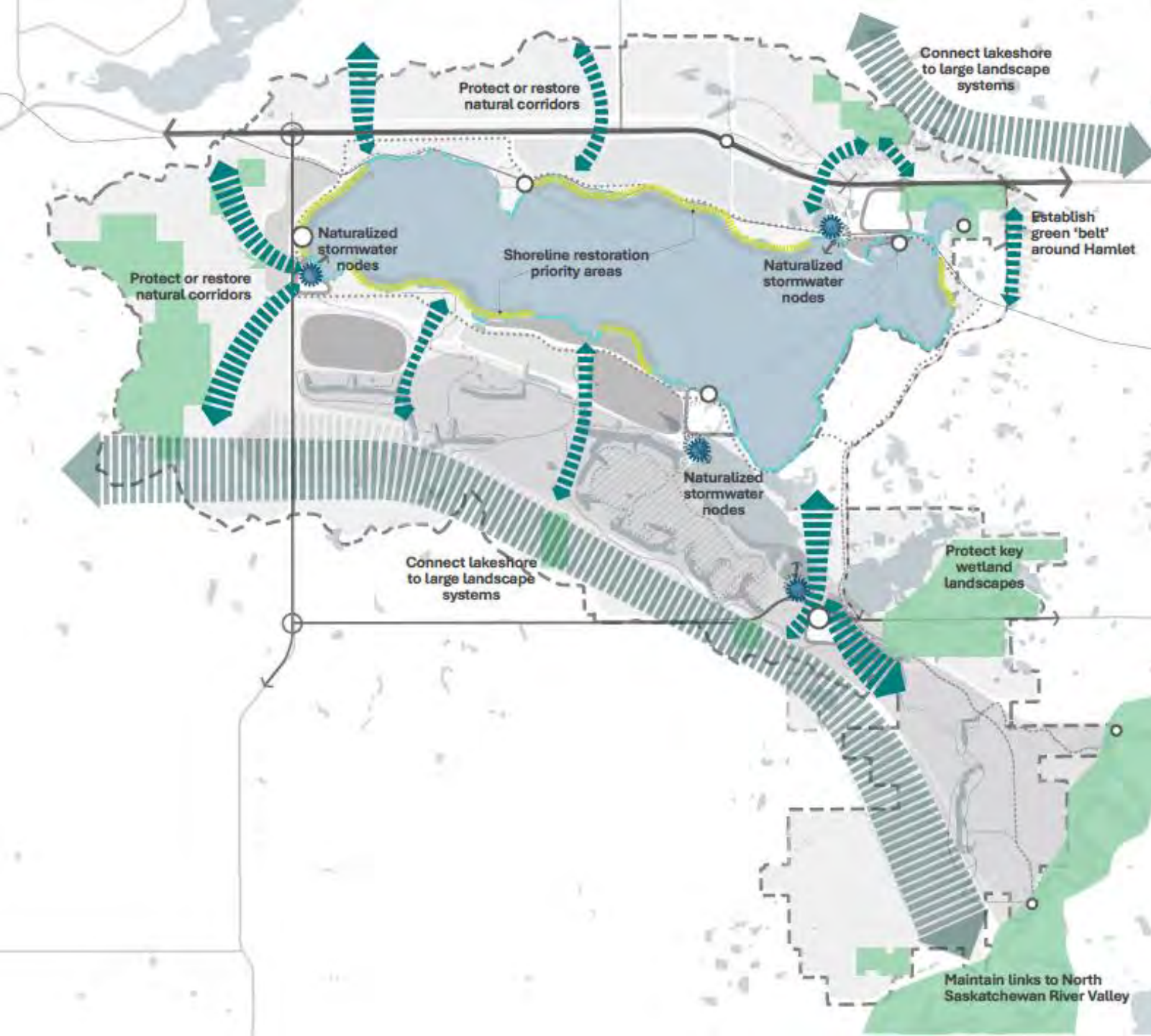
Development Opportunities

- 9 opportunities evaluated across the terrain
- Drawn toward conditions favourable to the use
- Pushed away from environmentally sensitive areas.
- Merged together to inform the use concept





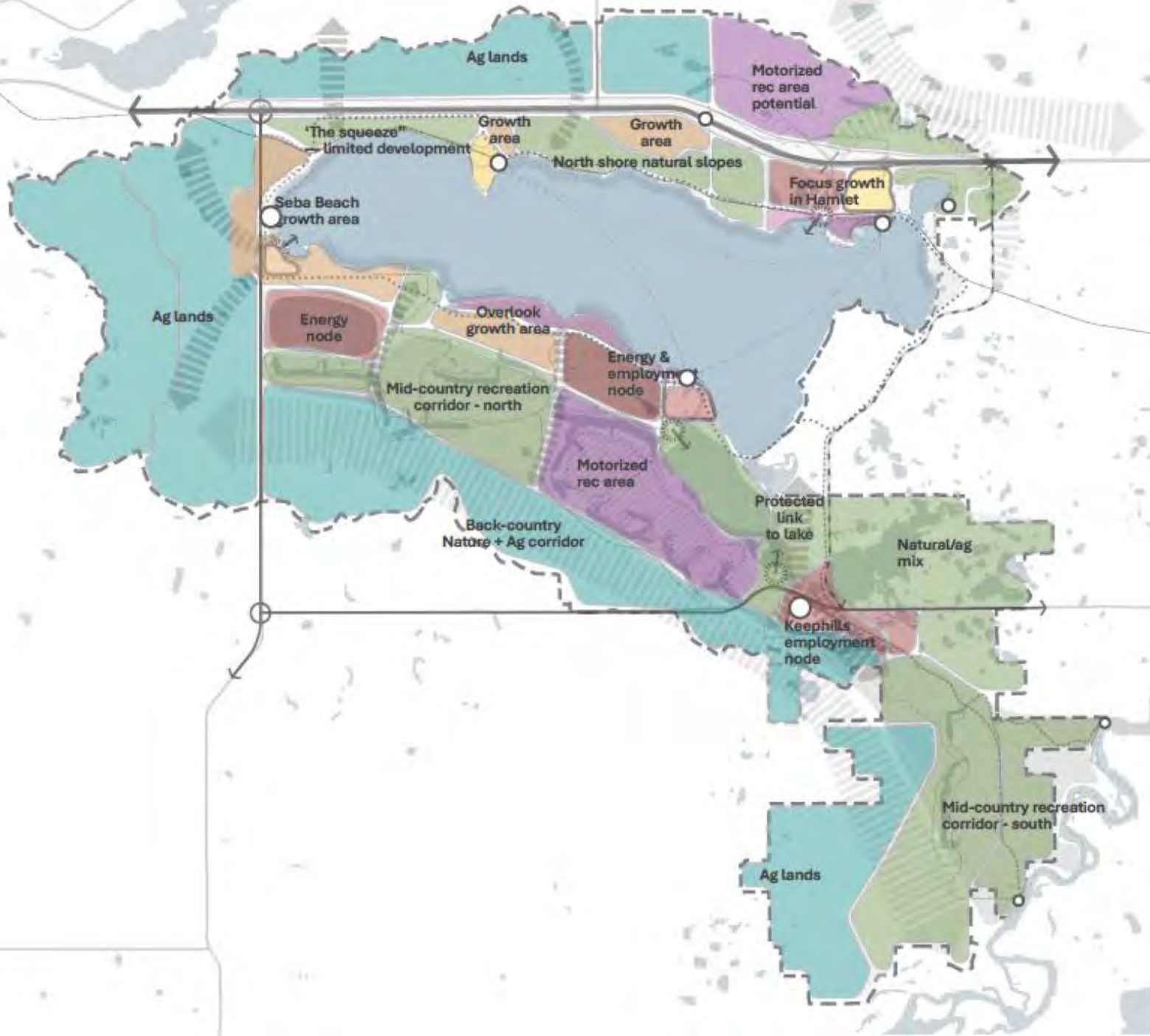
Concept Overview



Natural Systems

- Key natural spaces
- ▨ Proposed natural corridors
- ▨ Shoreline rehabilitation priority
- Stormwater treatment opportunity

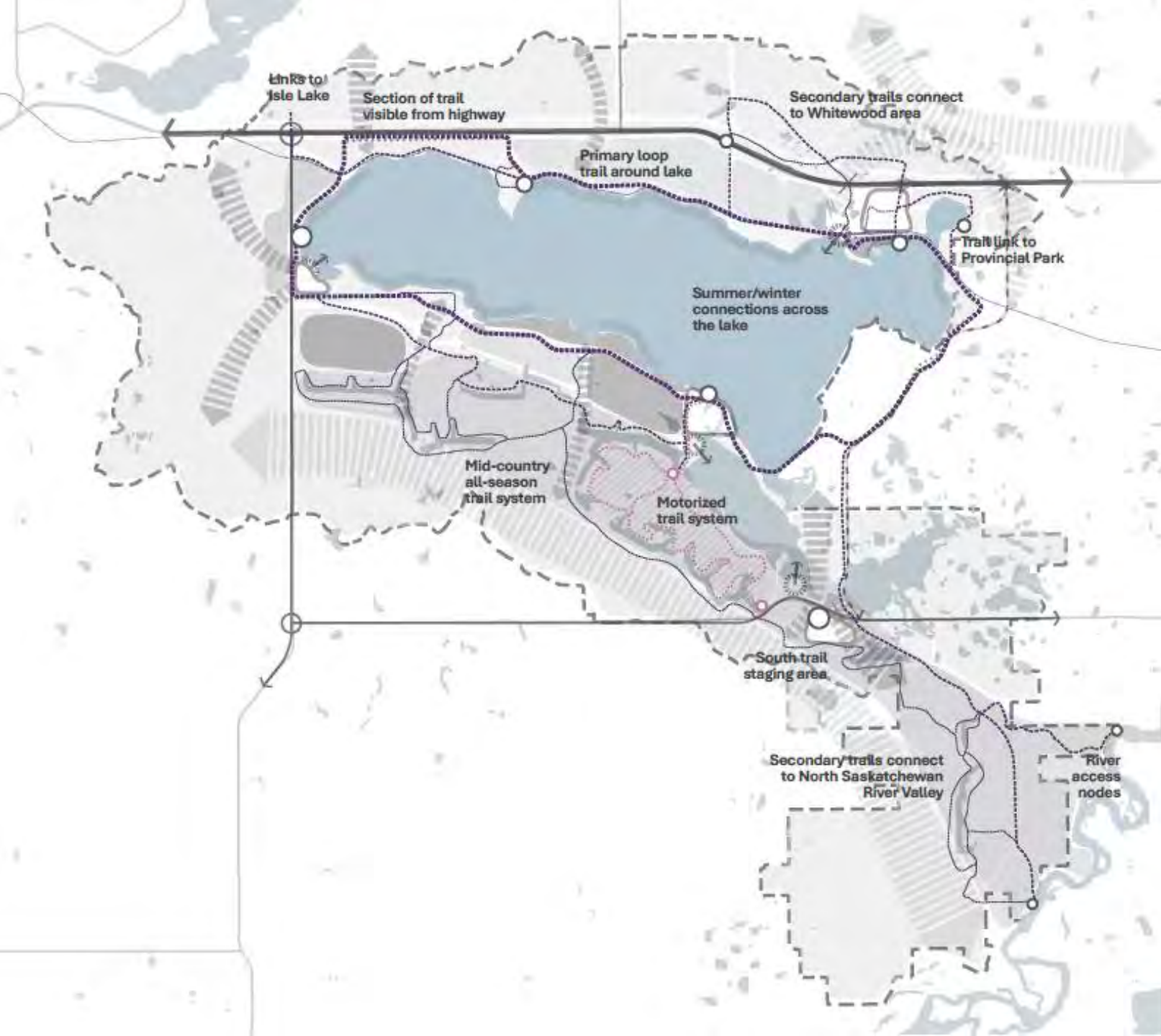
- Connect key natural spaces across region
- Restore the lakeshore as a filter that wraps around Wabamun Lake
- Link the lake perimeter to broader natural systems with natural corridors
- Identify stormwater treatment opportunities in growth areas








Use Priorities

- Mixed residential priority
- Recreation residential priority
- Natural areas with recreation priority
- Motorized and adventure rec priority
- Agriculture and natural area priority
- Mixed use and employment priority

- Focus growth in Wabamun Hamlet
- Leverage the mine site for motorized and non-motorized recreation uses
- Protect agricultural and natural lands
- Explore growth of low-intensity, part-time residential around lake perimeter



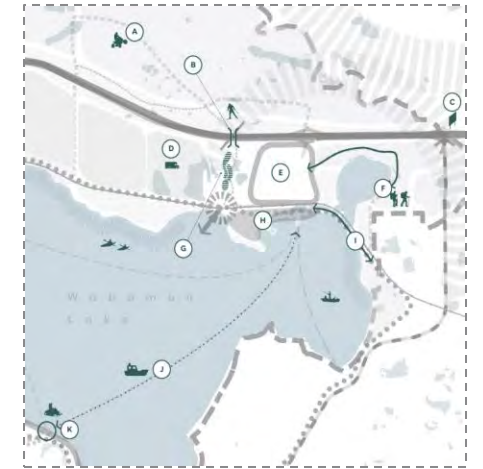
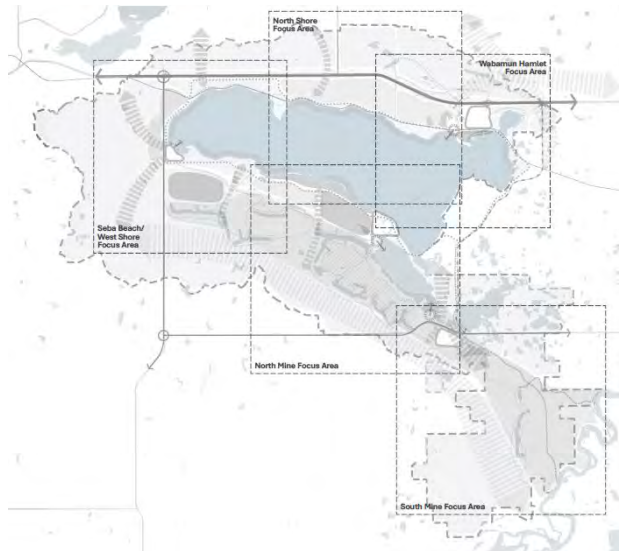
Connectivity

-  Primary lake perimeter trail
-  Secondary access trails
-  Tertiary adventure trails
-  Motorized recreation routes
-  Boat access connections

- Establish a primary trail that encircles Wabamun Lake, leveraging existing roads where possible
- Create a network of secondary and tertiary trails that create new recreation opportunities throughout the former mine lands
- Link key nodes around the lake with boat access

Focus Areas

- Wabamun Hamlet
- North Shore
- Fallis to Seba Beach
- North Mine
- South Mine





Goals & Strategic Actions

Goals & Strategic Actions

Regional Identity

- "Wabamun Country" has a distinct and well-known regional identity
- "Wabamun Country" showcases its unique natural assets and industrial legacy
- "Wabamun Country" provides a positive and memorable visitor experience

Natural Environment

- **Wabamun Lake anchors a clean and a healthy watershed**
- Wabamun Country has high quality natural landscapes that are well-connected through the region
- Post-industrial landscapes are restored in ways that recover natural function, protect water, and produce new opportunity

Economic Diversity

- Wabamun Country attracts new mainstay employment opportunities
- Wabamun Country presents a variety of hospitality options and experiences
- Agricultural uses are integrated and protected

Example action

Action A-2 Update Municipal Development Plan policies and Land Use Bylaw regulations to include greater protection of shoreline and other sensitive areas.

Goals & Strategic Actions

Community Growth

- Wabamun Country supports a year-round population with diverse housing types and supporting services.
- Residents of Wabamun Country feel safe and have a strong sense of community.
- Wabamun Country promotes community life with great places and public spaces.

Organized & Connected

- Residential and commercial growth is focused in Wabamun Hamlet
- **A clear mobility network connects Wabamun Country**
- Wabamun Country grows in collaboration with local Indigenous communities

Recreation & Amenity

- Wabamun Country supports motorized and non-motorized recreation in all seasons.
- Wabamun Country provides recreation opportunities for diverse users.
- Wabamun Country has clear and accessible public lake access.

Example action

Action I-2 **Create a connected trail/pathway around Wabamun Lake.**



Appendices

- A. Engagement Summary Pt 1
- B. Engagement Summary Pt 2
- C. Engagement Summary Pt 3
- D. Natural Systems Memo
- E. Development Opportunities Memo
- F. Market Conditions Memo
- G. Infrastructure Memo