



parkland
county

Waterfront Resident Education

Interactive Guide to Waterfront Living

September 2016

Background

- 2015 was declared the Year of Our Lakes in Parkland County
- Waterfront resident education was made a priority goal for Environment & Community Sustainability
- The Environmental Advisory Committee recommended various forms of environmental education for waterfront residents including:
 - Website updates
 - Social media communications
 - Communicator articles
 - Workshop resources



Lakefront Stewardship Workshop

- Date: July 19th, 2016
- Format: In-person workshop including presentations and tradeshow style booths
- Presenters:
 - Land Stewardship Centre's Love Your Lake program
 - Nature Alberta's Living by Water program
 - Parkland County's Green Acreages program
 - Parkland County's Interactive Guide to waterfront Living
- Booths set up by presenters as well as lake management/stewardship associations



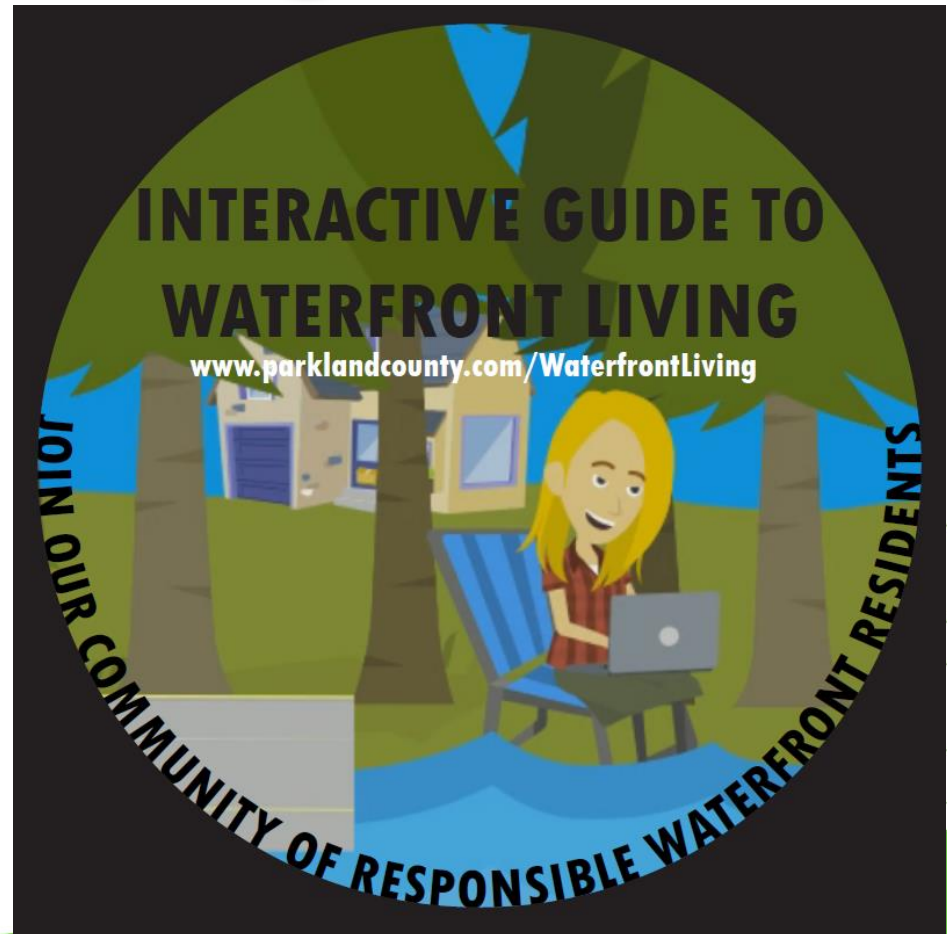
Lakefront Stewardship Workshop

- Over 40 attendees participated



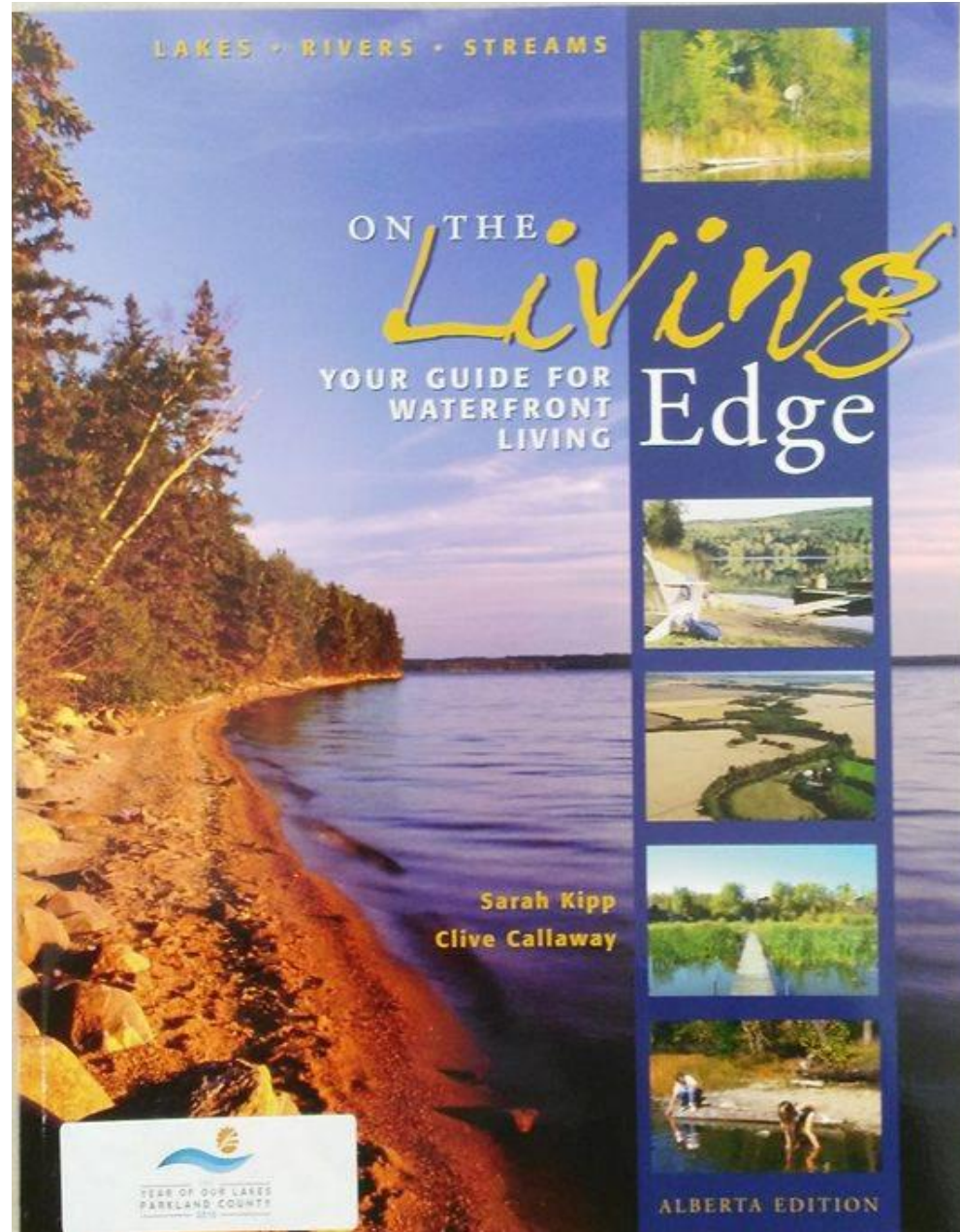
Interactive Guide to Waterfront Living

- Pilot project to test resident participation in online workshops
- Launched at the Lakefront Stewardship Workshop in July
- Feedback used to create revisions and make the product more dynamic
- Version 2.0 launched end on August 2016



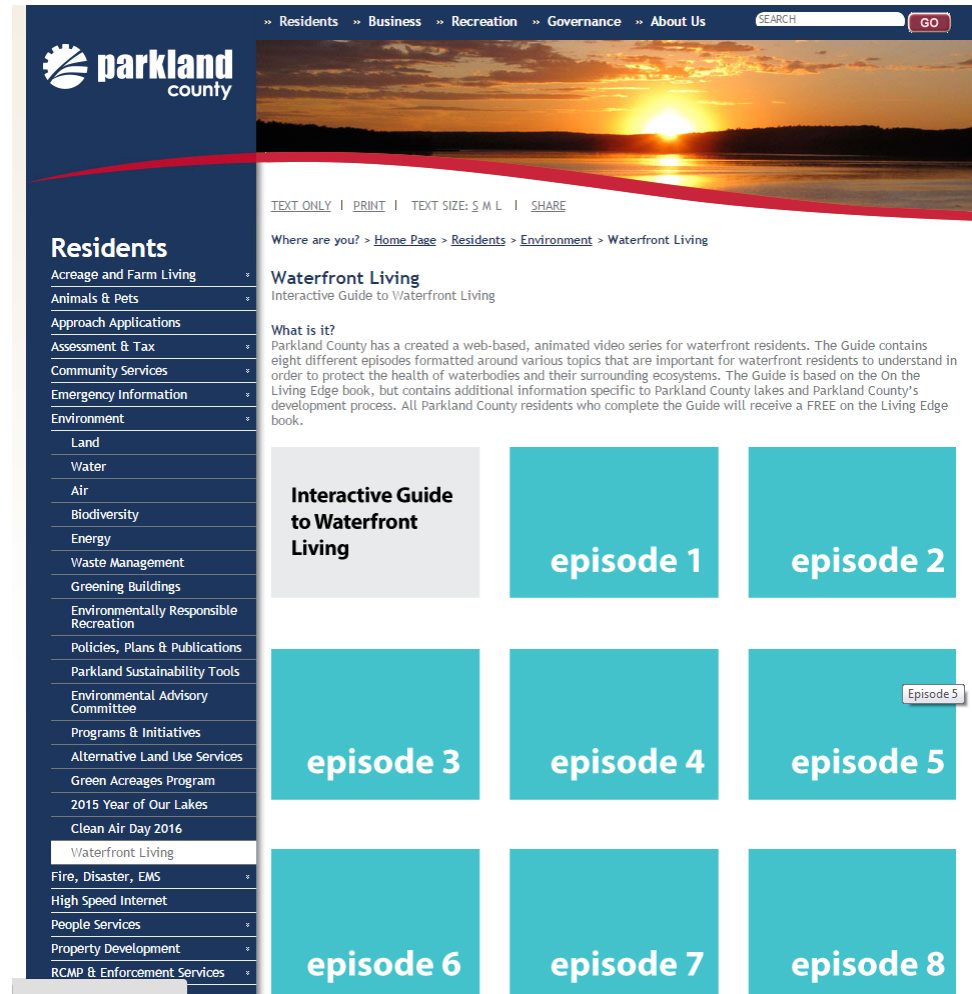
What is it?

- A series of short animated videos
- Designed to teach waterfront property owners how to live responsibly to protect the health of our waterbodies and surrounding ecosystems
- Short quiz after each video
- Based on the On The Living Edge Book
- Has additional info about Parkland County

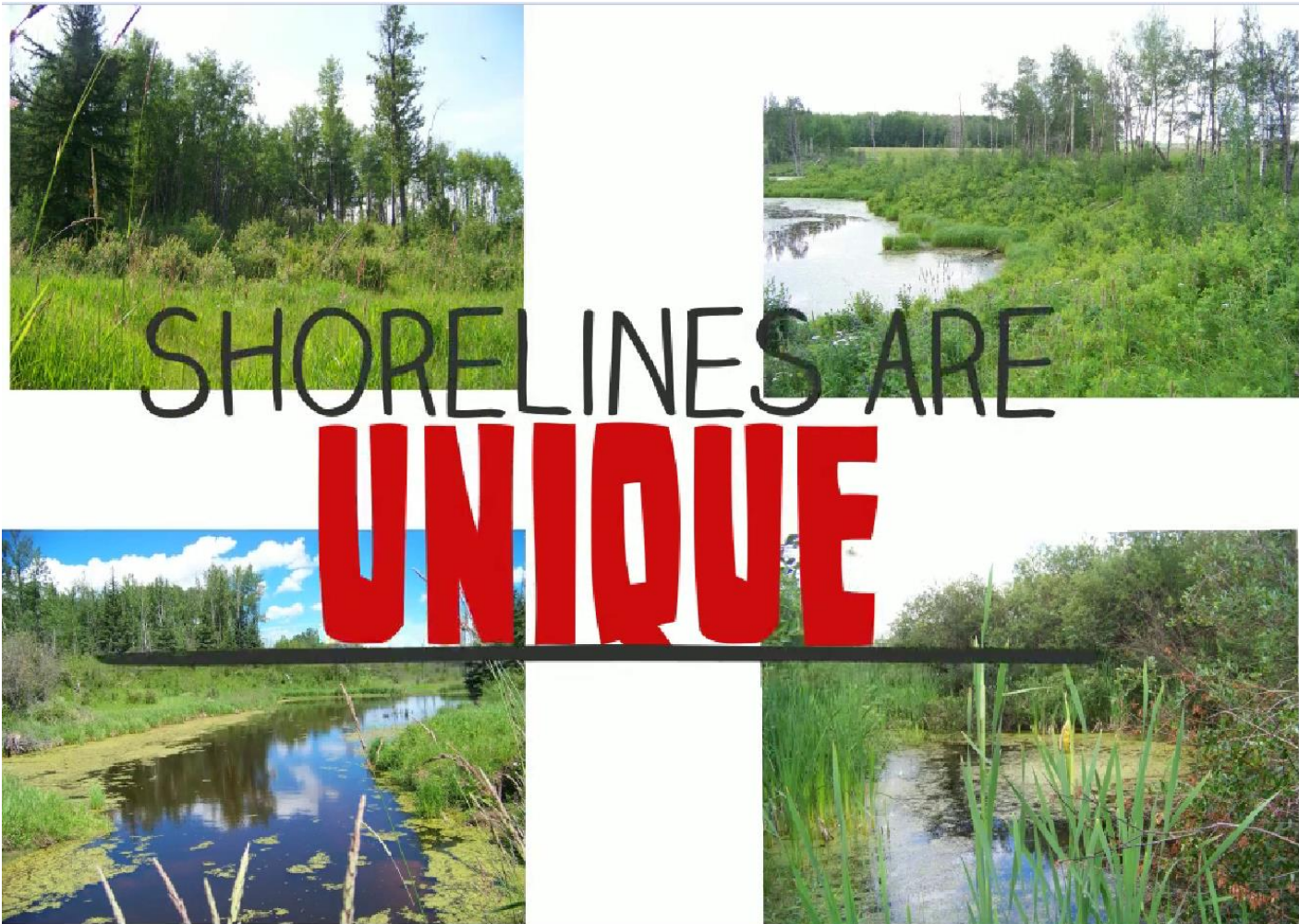


Video Episodes

- All episodes with associated quizzes available on Parkland County website at www.parklandcounty.com/waterfrontliving
- Episodes also available individually on Parkland County YouTube Channel



Episode 1-Shorelines



Episode 2- The Buffer Zone

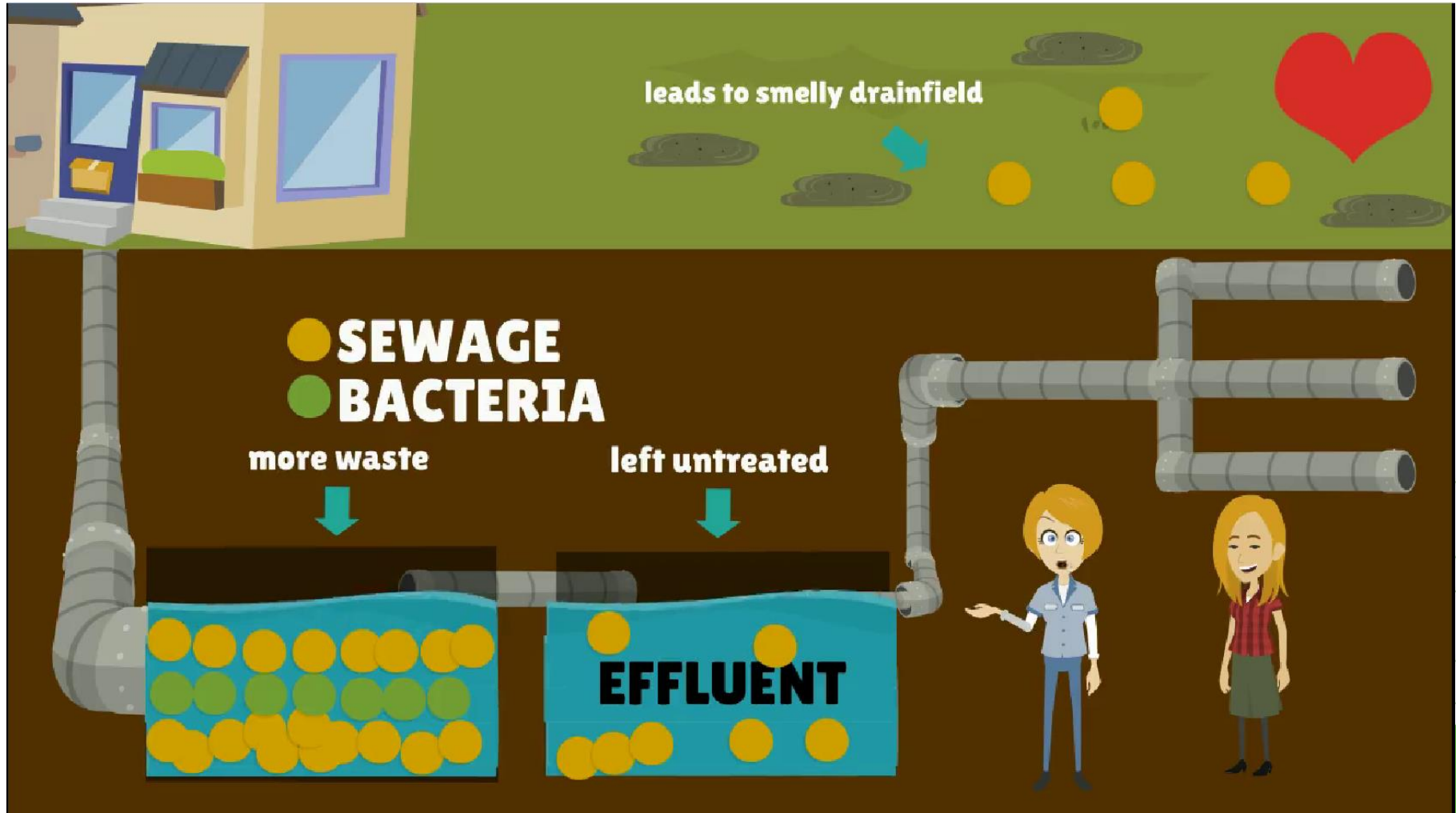


Episode 3

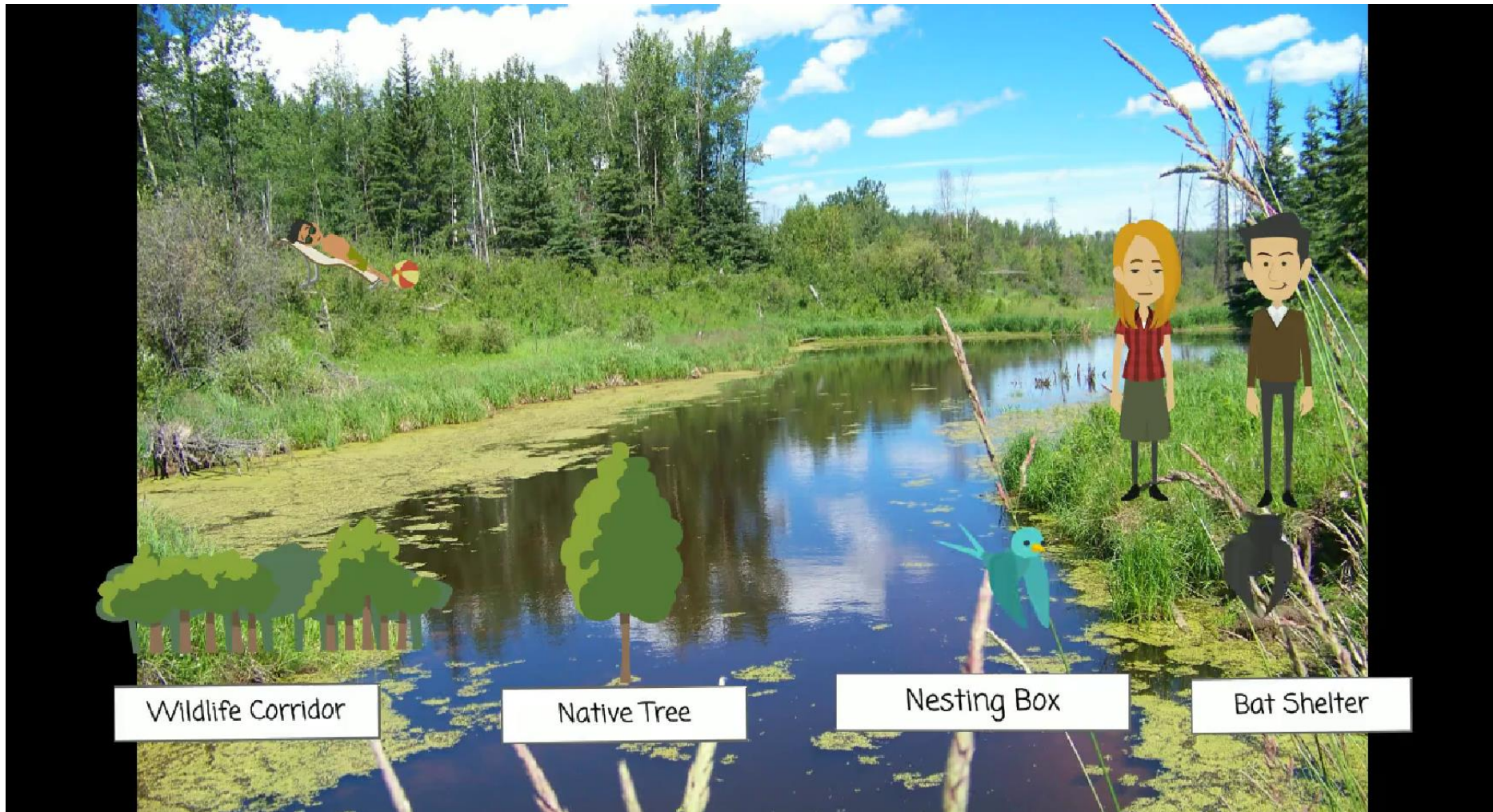
Construction Projects



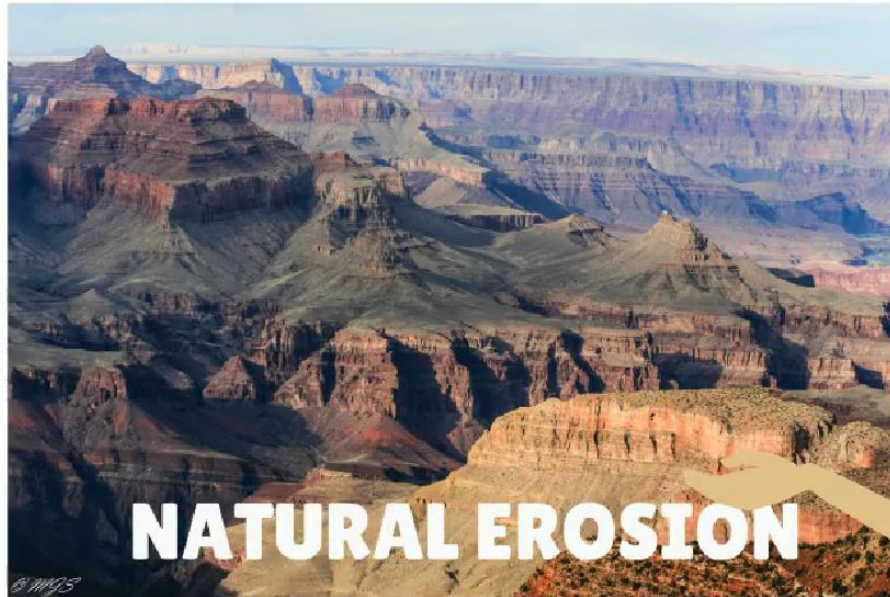
Episode 4- Septic Systems



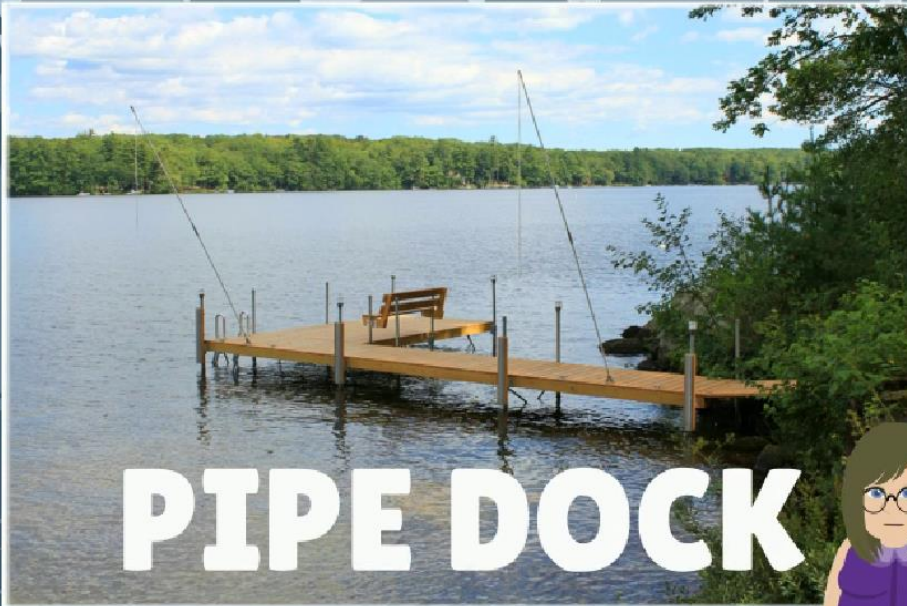
Episode 5- Landscaping



Episode 6- Erosion



Episode 7- Shoreline Access

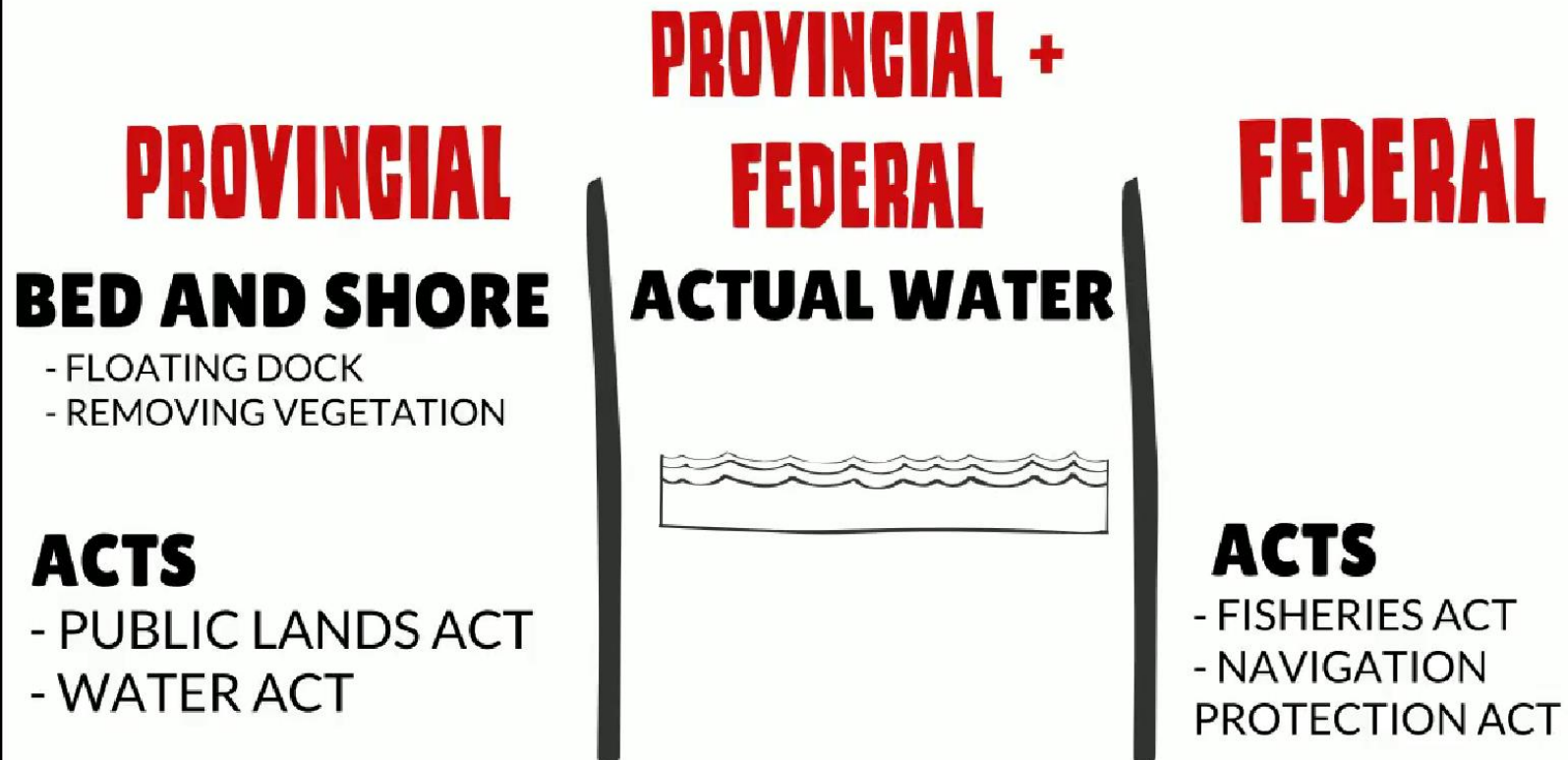


PIPE DOCK



Episode 8

Whose Shoreline Is It?



Next Steps

- Communications Plan
 - Advertise at events using magnets and posterboards
 - Wabamun Sub-watershed Land Use Plan
 - Tech Fest
 - ALUS information session at Lake Isle
 - Farmers Markets
 - Article in newsletters
 - Email to lake stewardship societies
 - Advertise in newspaper
- Collect participation metrics and summarize
- Compare in-person vs online workshop styles

