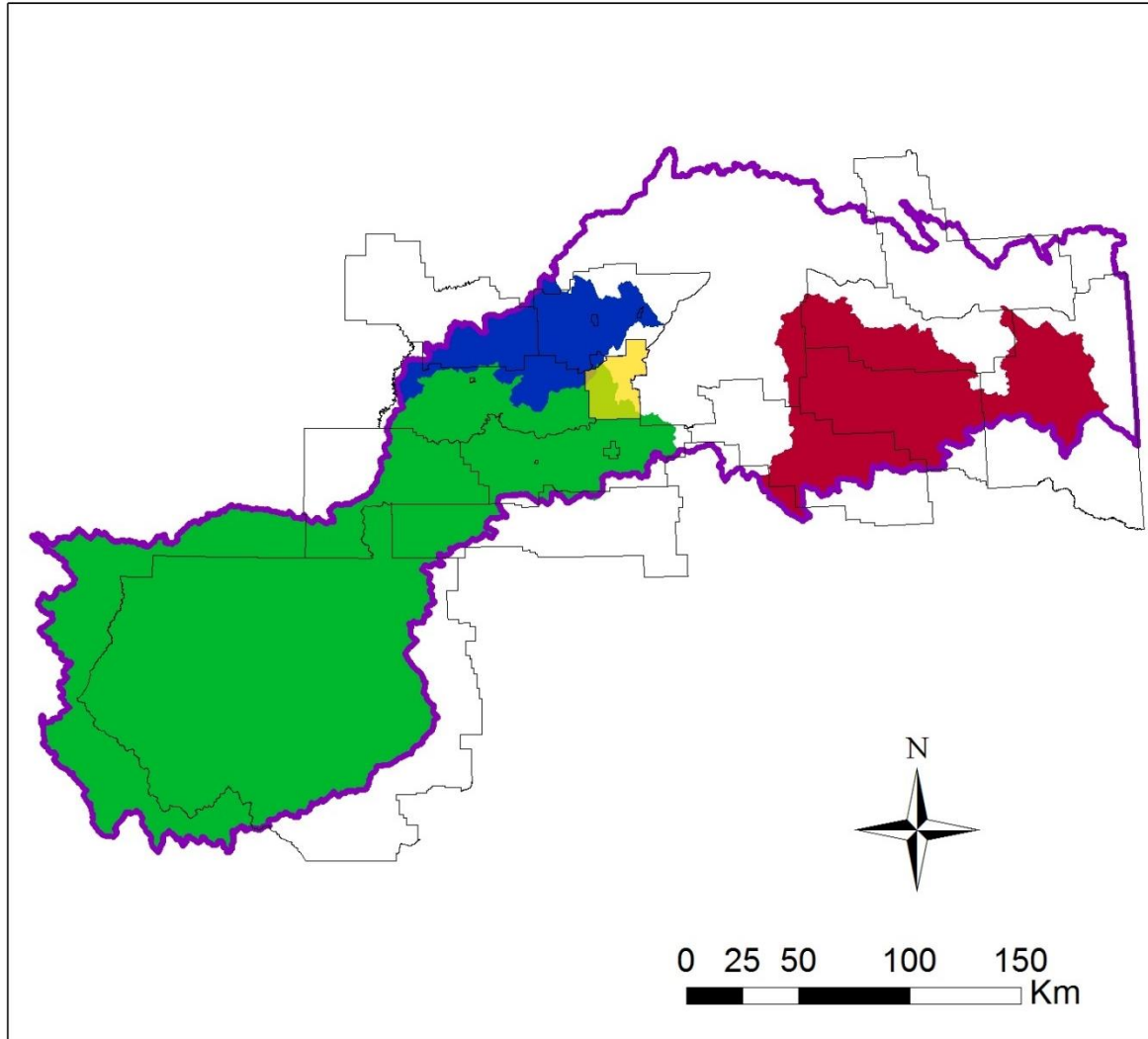


Modeste Watershed Pilot Project

Phase 3: Economic Analysis of Natural Capital

The North Sask. Watershed Alliance



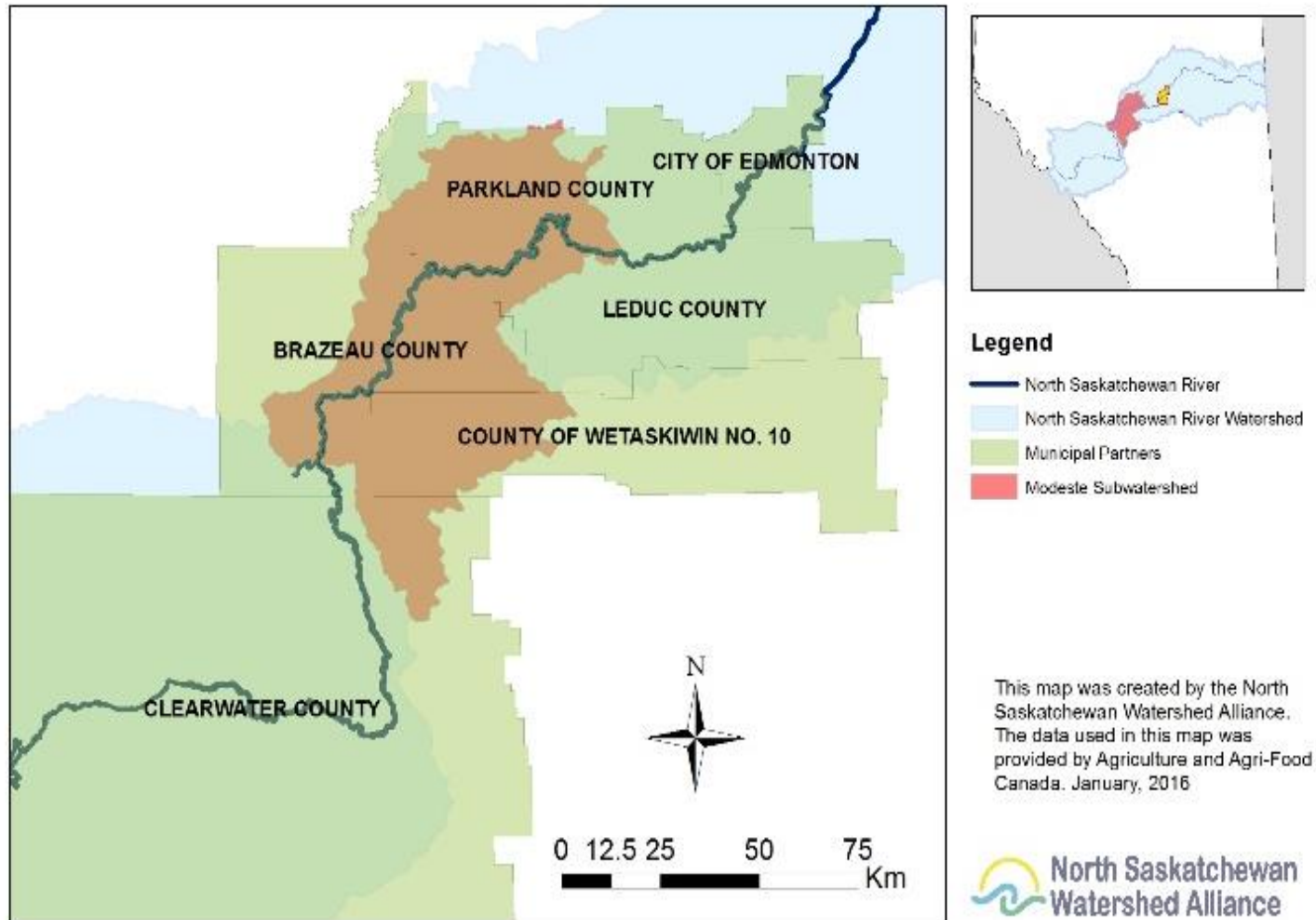
Legend

- Municipal Partners
- City of Edmonton
- North Saskatchewan Watershed Alliance
- Headwaters Alliance
- Sturgeon River Watershed Alliance
- Vermilion River Watershed Alliance

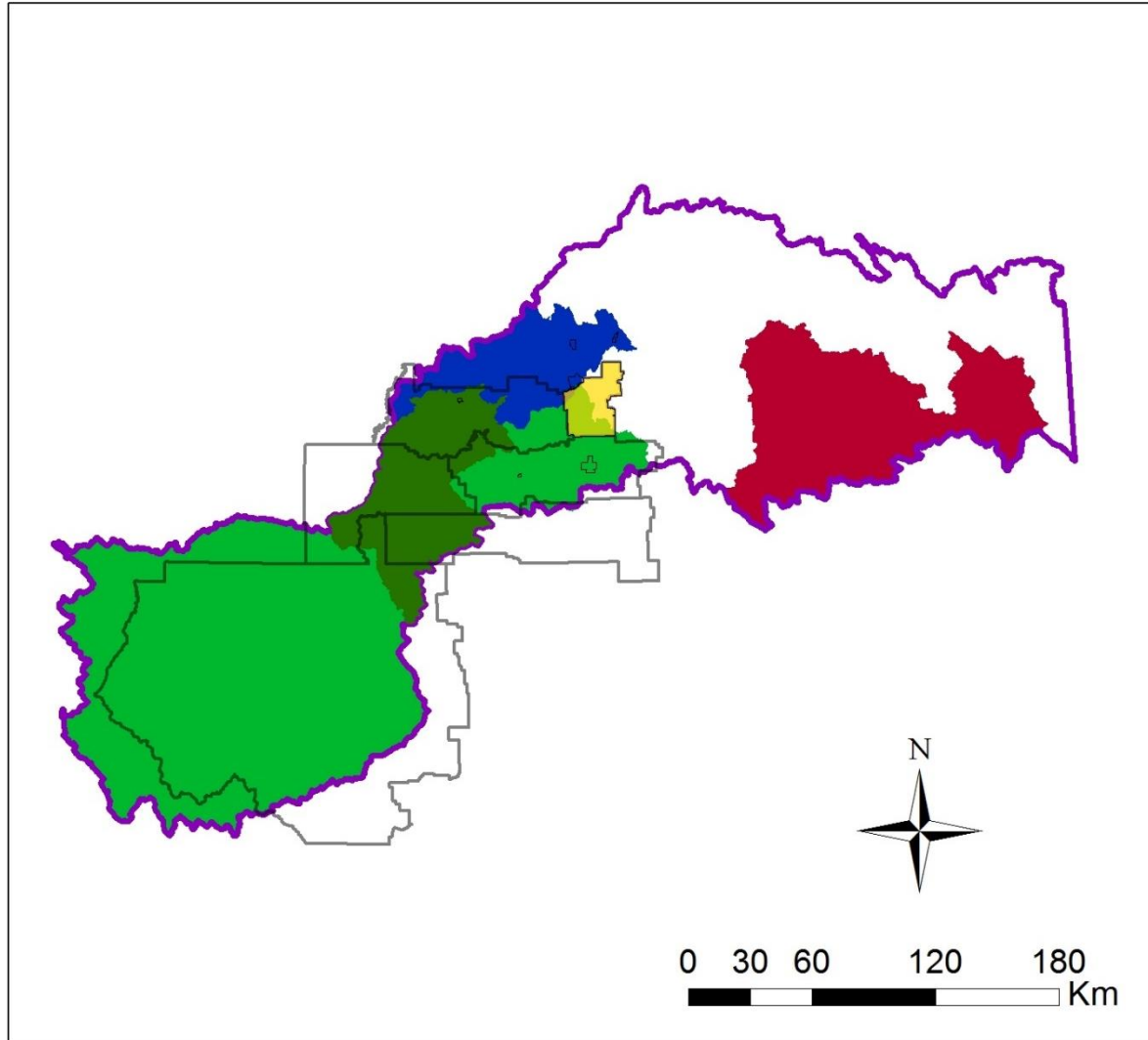
This map was created by the North Saskatchewan Watershed Alliance. The data used in this map was provided by Water Survey of Canada. November, 2016



The Headwaters Alliance



The Modesté in the NSR



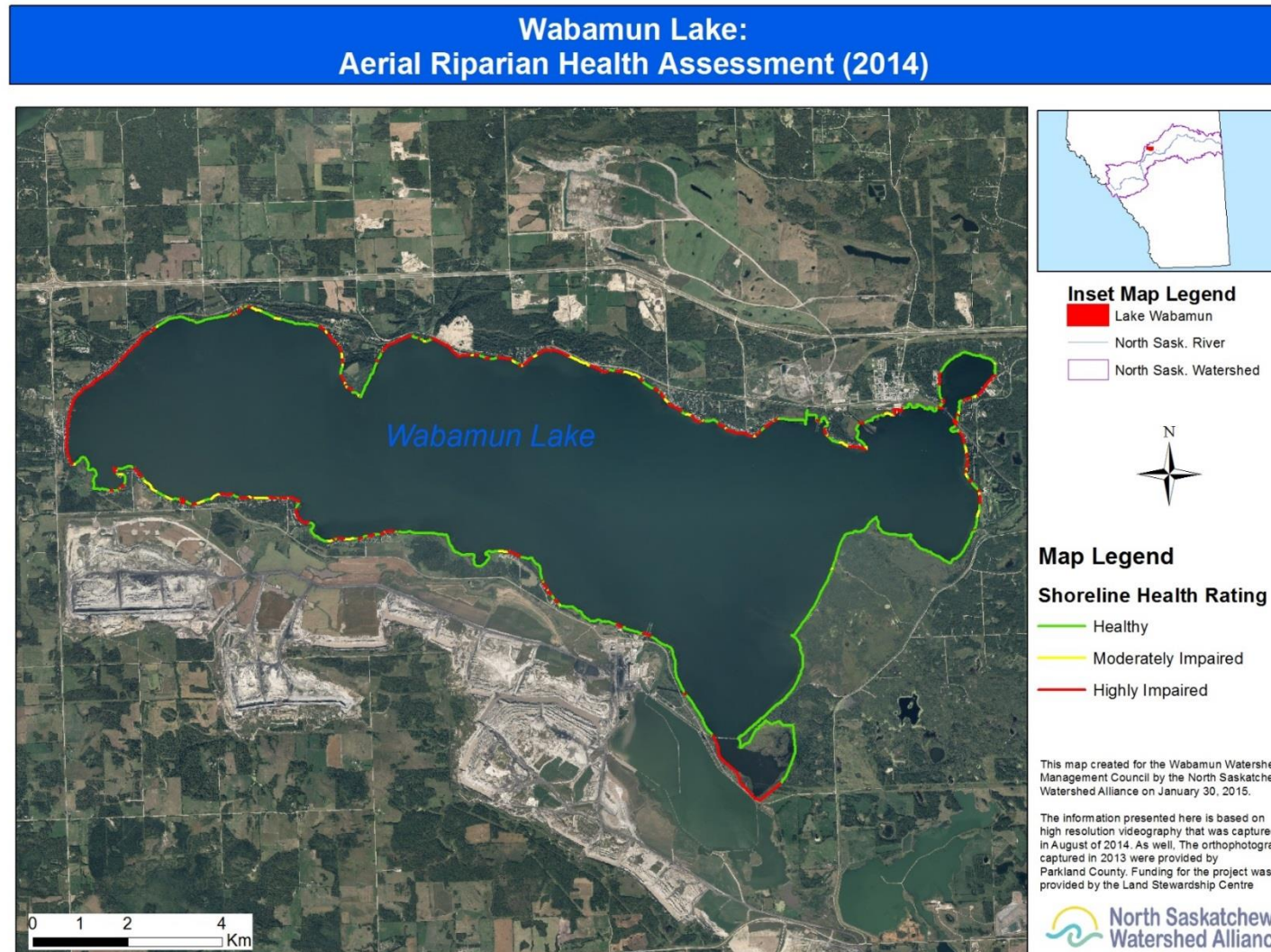
Legend

- City of Edmonton
- North Saskatchewan Watershed Alliance
- Headwaters Alliance
- Sturgeon River Watershed Alliance
- Vermilion River Watershed Alliance

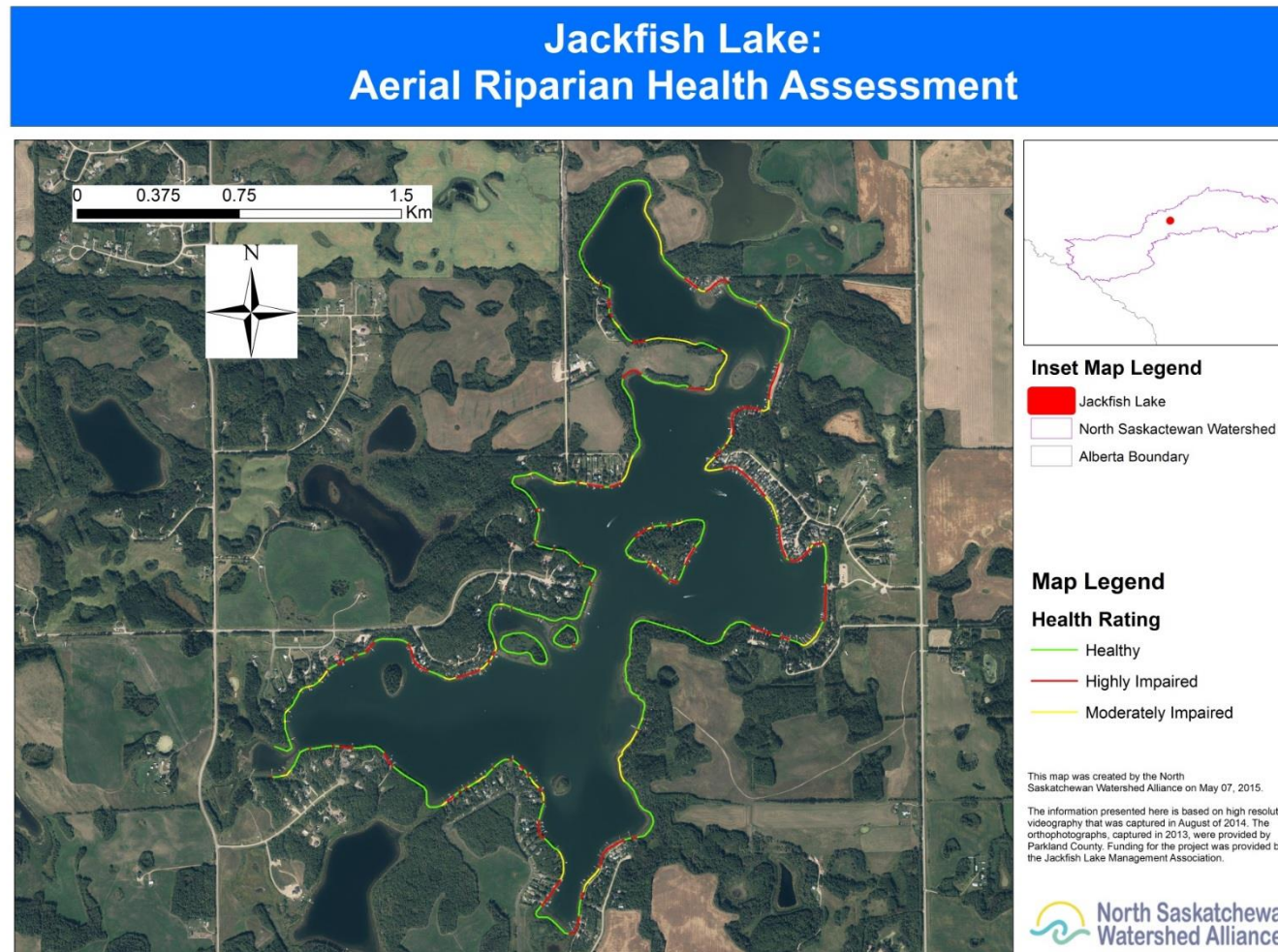
This map was created by the North Saskatchewan Watershed Alliance. The data used in this map was provided by Water Survey of Canada. November, 2016



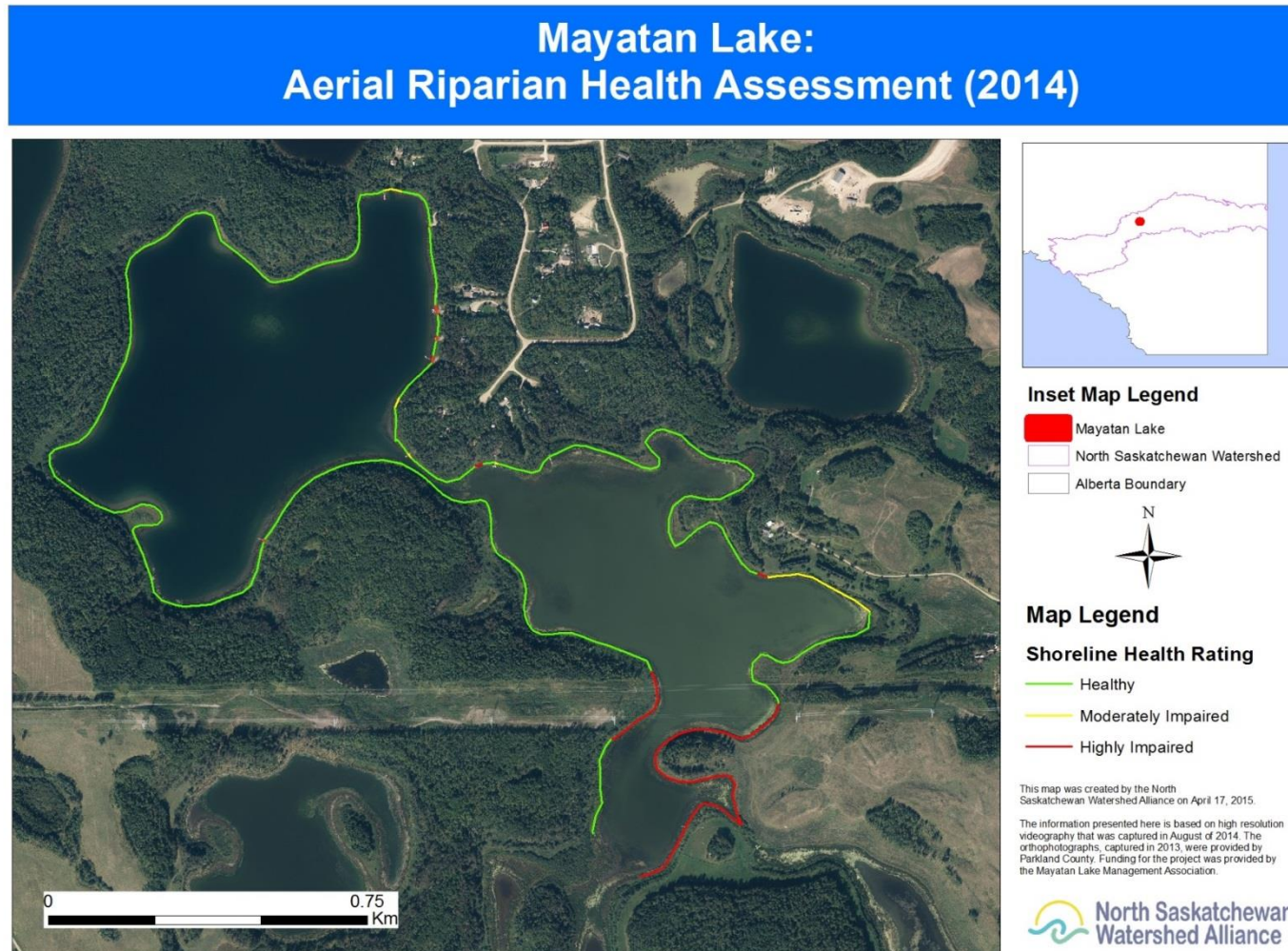
Other Riparian Health Assessments in Parkland County



Other Riparian Health Assessments in Parkland County

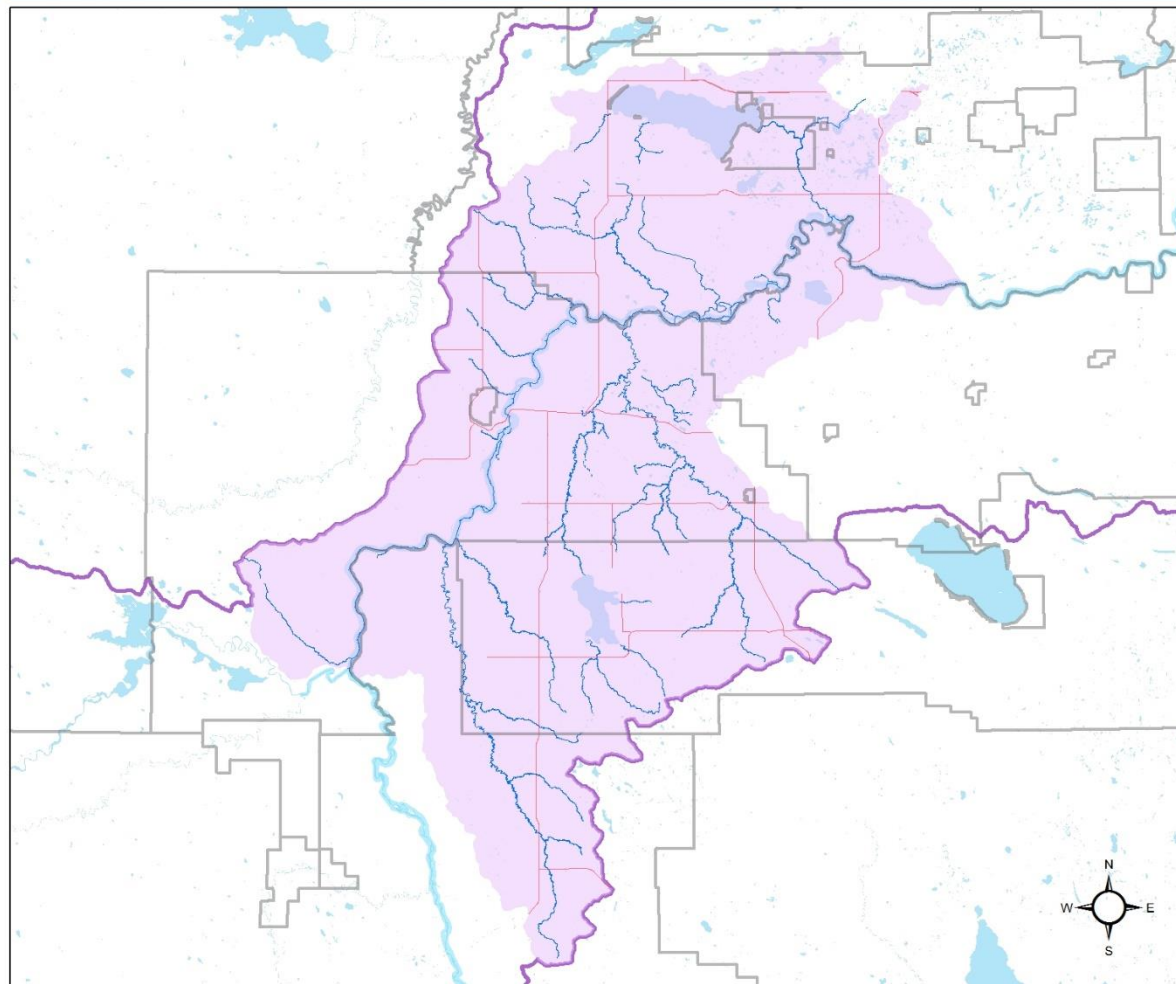


Other Riparian Health Assessments in Parkland County



Modesté Watershed Pilot Project: Project Area

River and Creeks of the Modeste Watershed Riparian Health Assessment



Inset Map Legend

- North Saskatchewan River (NSR)
- NSR Basin Watershed

Legend

- Municipal Boundaries
- Road/Highway
- River and Creeks
- Modeste Watershed

This map was created by the
North Saskatchewan Watershed
Alliance September 2016.

The data used to create this map
was provided by the Government
of Alberta (BF_SLNET_ARC).

1:359,162

0 170 340 680 1,020
Km

Modesté Watershed Pilot Project: Phase 1 Preliminary Results



Modesté Watershed Pilot Project: Phase 2

- ▶ To commence April 2017
- ▶ To include:
 - ▶ Development of an inter-municipal plan for increasing riparian health
 - ▶ Plan will utilize existing stewardship programs
 - ▶ Measurement of cumulative change

Modesté Watershed Pilot Project: Phase 3 Overview

- ▶ Develop a watershed model to prioritise restoration
- ▶ Economic analysis of infrastructure value of natural areas:
 - ▶ Wetlands
 - ▶ Riparian Areas
 - ▶ Uplands
- ▶ Can reduce infrastructure costs from flood mitigation and water purification



Modesté Watershed Pilot Project: Phase 3 Funding

- ▶ Federation of Canadian Municipalities (FCM) Green Municipal Fund application will cover 50% of project funding
- ▶ Matching grant funds currently being pursued by ALUS Canada
 - ▶ Federal Public Safety
 - ▶ Government of Alberta
- ▶ Eco-West to provide written grant application **in-kind**
- ▶ Project results designed to support funding for Parkland stewardship programs
 - ▶ Green Infrastructure

Modesté Watershed Pilot Project: Phase 3 Timeline

- ▶ **March, 2017** - Parkland County resolution passed
- ▶ **March-April, 2017** - RFI issued by Parkland County to inform project budget and scoping
- ▶ **April-May, 2017** - FCM proposal written by Eco-West, other partners identified and contacted
- ▶ **Summer 2017** - Funding confirmed
- ▶ **Summer 2017** - RFP issued by Parkland County
- ▶ **Fall 2017** - Contracts signed with consultant and research timelines finalized
- ▶ **Winter 2017-2018** - Project Implementation

Modesté Watershed Pilot Project: Phase 3 Partner Roles

- ▶ **Writing of FCM Green Municipal Fund proposal-** Eco-West
- ▶ **Proposal/Application reviews-** Steering Committee
- ▶ **Overseeing project financial management:** Parkland County
- ▶ **Grant reporting-** Steering Committee
- ▶ **High level project advising and information dissemination:**
Headwaters Alliance