



DEVELOPMENT SERVICES DIVISIONAL UPDATE

SEPTEMBER 5, 2017



ECONOMIC DIVERSIFICATION

DEPARTMENT UPDATE

ECONOMIC DIVERSIFICATION PRIORITIES

- Customer service
- Rural business development and support
- Value-added agriculture
- Tourism development
- Industrial/Commercial growth
- Major project support
- Targeted sector growth

MAJOR ACCOMPLISHMENTS- CHAMPION



Champion Petfoods – Under Development

\$250 million



Currently under development in Acheson planning for 2019 opening

MAJOR ACCOMPLISHMENTS- PINNACLE



Pinnacle Renewable Energy

\$85 million



Currently under development in Entwistle, on track for 2018 opening

HIGHLANDS BUSINESS PARK

By Panattoni Developments and
includes 300 acres of development land
in Acheson.

75 acres home to Champion Petfoods



FATH ACHESON BUSINESS PARK

32 acres of new subdivided and development ready land.

Strong highway frontage

Land is actively for sale with several land transactions already in place.

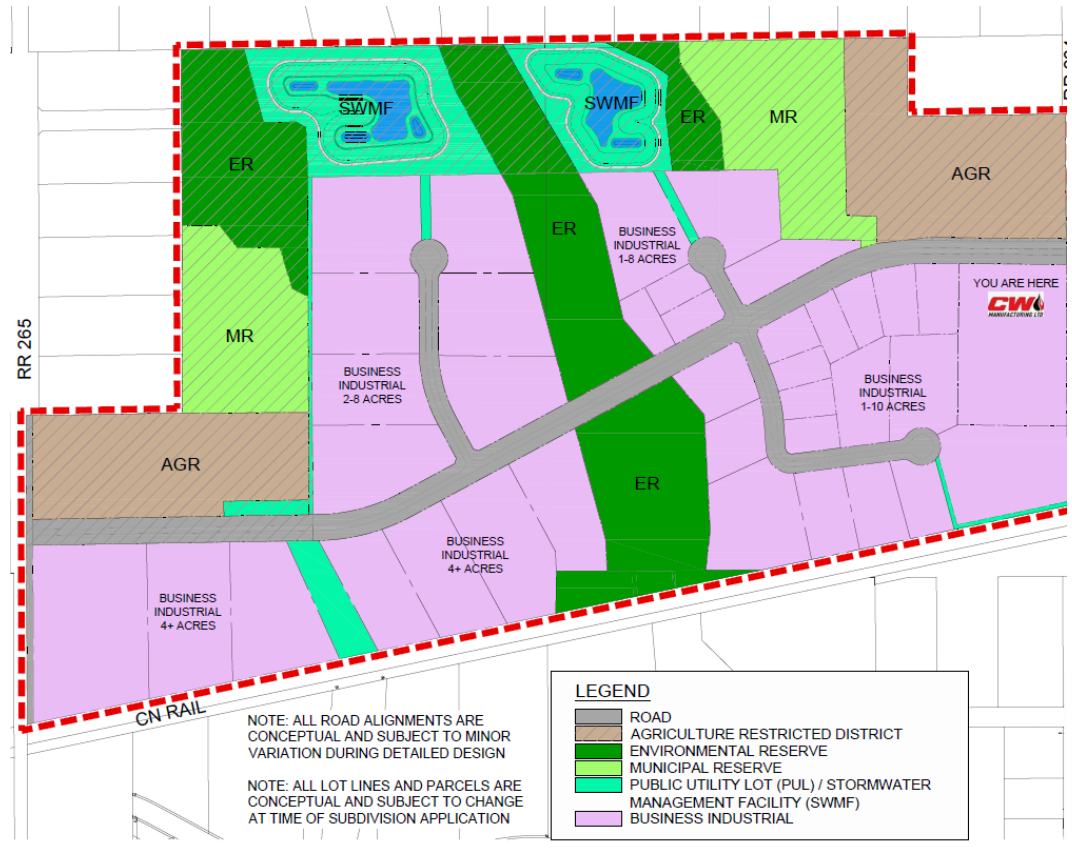


MORGAN CREEK TECHNOLOGY PARK

285 acres of new developable land.

Infrastructure and road network expected to be in place in 2018.

Being marketed as a possible technology hub.



MAJOR BUSINESS ATTRACTION PROGRAM

Provides higher level of support for large scale businesses that are aligned with Parkland County's strategic plan

Used to support the Pinnacle and Champion opportunities

Links to Business Attraction reserve



Parkland County has created a Major Business Attraction Program to attract investors and major industry to the area. Attracting high-quality business investment into Parkland County plays a major role in creating economic growth, job creation, diversifying the economic activity and allowing Parkland County to compete in the global marketplace.

The County understands that large industry projects can be complex and require a more specialized approach. The Major Business Attraction Program brings a dedicated team to aid in the process of either building or relocating to Parkland County.

Eligible Projects

Parkland County has identified economic diversification as a key strategic priority.

Large scale projects may include:

- Manufacturing
- Value Added Agriculture
- Transportation & Logistics
- Technology services
- Agriculture processing

To be considered, potential businesses looking to locate or expand in the County must also show:

- 1 Considerable benefit to Parkland County residents through job creation, tax generation
- 2 Alignment to Parkland County's strategic priorities
- 3 Potential benefits or linkages to existing industries in Parkland County

ONE PARKLAND: POWERFULLY CONNECTED.



www.parklandcounty.com

Services and Support Options:



DEDICATED COUNTY PROJECT MANAGER TO SUPPORT INTERNAL PROCESSES



DEDICATED CROSS-DEPARTMENTAL TEAM
Planning and Development, Engineering, Economic Diversification, and Communications



HANDS-ON APPROACH TO PLANNING, DEVELOPMENT AND PERMITTING PROCESSES



POTENTIAL REALIGNMENT OF COUNTY CAPITAL INFRASTRUCTURE PRIORITIES



SUPPORT WITH PROVINCIAL GOVERNMENT WHERE NEEDED

How to Get Started

If you would like to learn more about our Major Business Attraction Program visit our website:
www.parklandcounty.com/MajorAttraction

Or call:

Mark Edwards, Director, Economic Diversification
780-968-8406 | medwards@parklandcounty.com

GEO TOURS

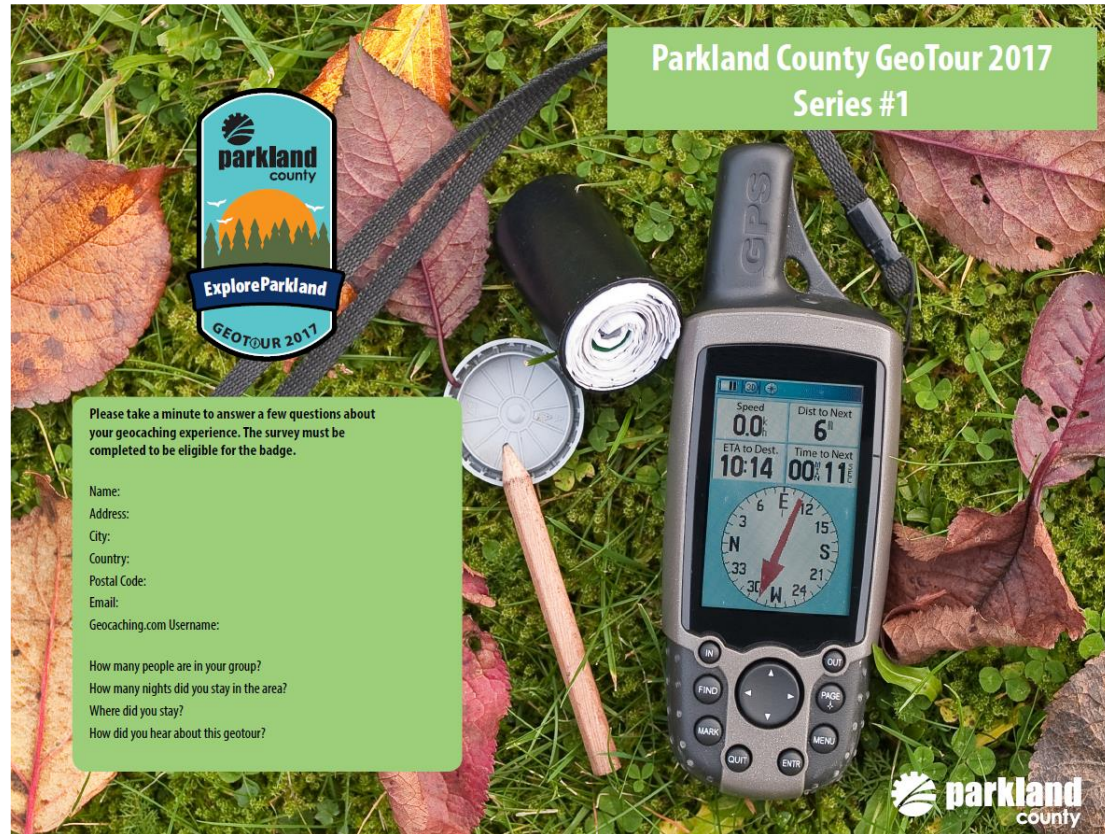
15 geocaches throughout Parkland County

Passport offered for series #1

Over 700 “finds”

15 more caches will be added on September 29th

Program will continue into 2018 including prizes to drive people to local tourism businesses



OPEN FARM DAYS

August 19/20

6 stops in Parkland County

\$50,000 grant from government of Alberta used to hire business coaches to work with participating farms.

Very well received and utilized program

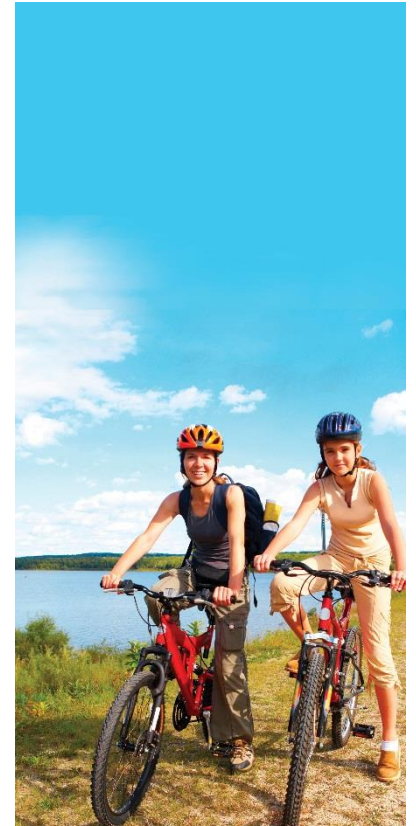


This year there are 6 stops in Parkland County for Alberta Open Farm Days! For details on each event visit: www.parklandcounty.com/openfarmdays

Alberta Open Farm Days is a province wide open house that's all about farmers and ranchers inviting their urban and rural neighbours to stop in for a visit.
www.albertafarmdays.com

- 1 Bent River Ranch**
SATURDAY: 10am - 9pm SUNDAY: 10am - 4pm
- 2 Riverbend Cattle Co.**
SUNDAY: 9am - 4pm
- 3 Newman Country Farm Retreat**
SATURDAY: 11am - 4pm
- 4 Multicultural Heritage Centre**
SATURDAY: 1pm - 4pm
- 5 Happy Acres U-Pick**
SUNDAY: 5pm - 9pm
- 6 Kiwi Nurseries Ltd**
SATURDAY: 10am - 4pm SUNDAY: 10am - 4pm

TOURISM ACTION PLAN



2017 HIGHLIGHTS

- Economic Diversification Committee established
- Department re-organized- increased focus on rural business
- Business priorities survey
- 3 new land uses approved
 - BIR- Regional Business Industrial
 - Cottage Industry
 - AGI- Agricultural Industrial District
- Hosted “Economic resilience for local leadership” workshop
- Hosted John Knapp agriculture event

COLLECTIVE EFFORTS

- Planning and Development Services
- Engineering Services
- Public Works
- Communications
- Enforcement
- Legislative and Legal Services



UPCOMING ACTIVITIES

- Value-Added agriculture action plan
- Small business week
- Chamber and ABA awards
- Business of the year for Tourism, Rural and Acheson.
- Council in-camera update on active opportunities

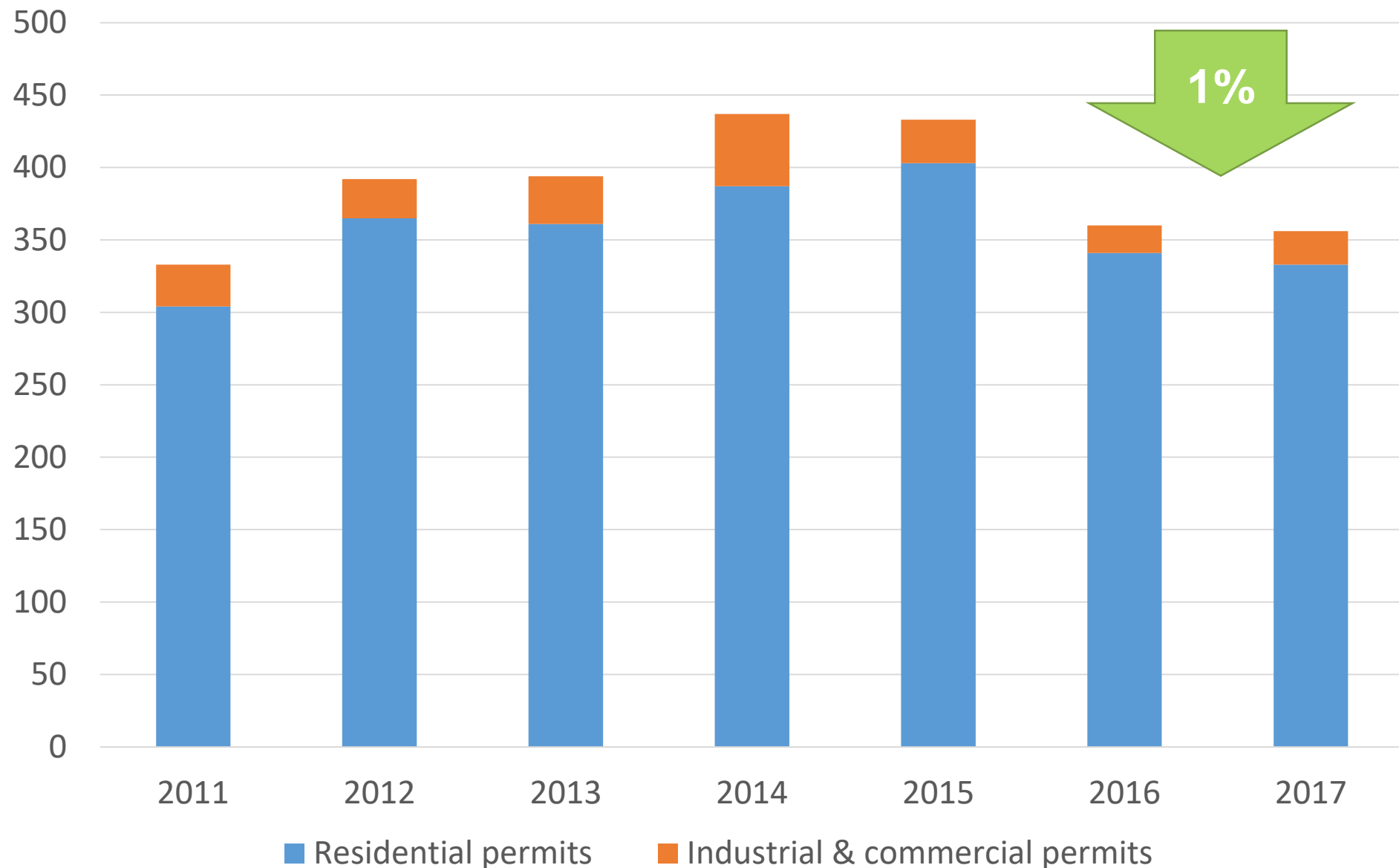




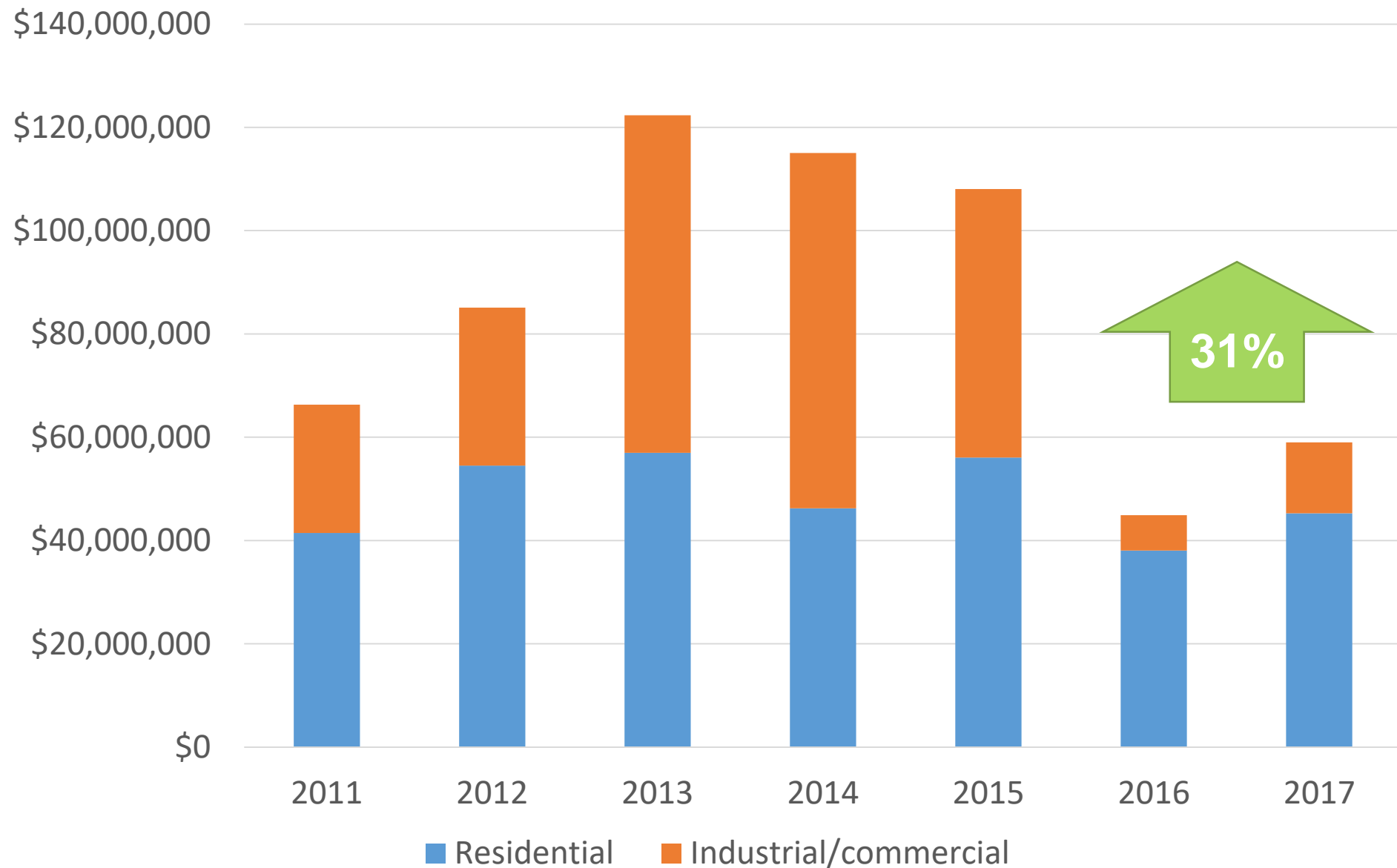
PLANNING & DEVELOPMENT

DEPARTMENT UPDATE

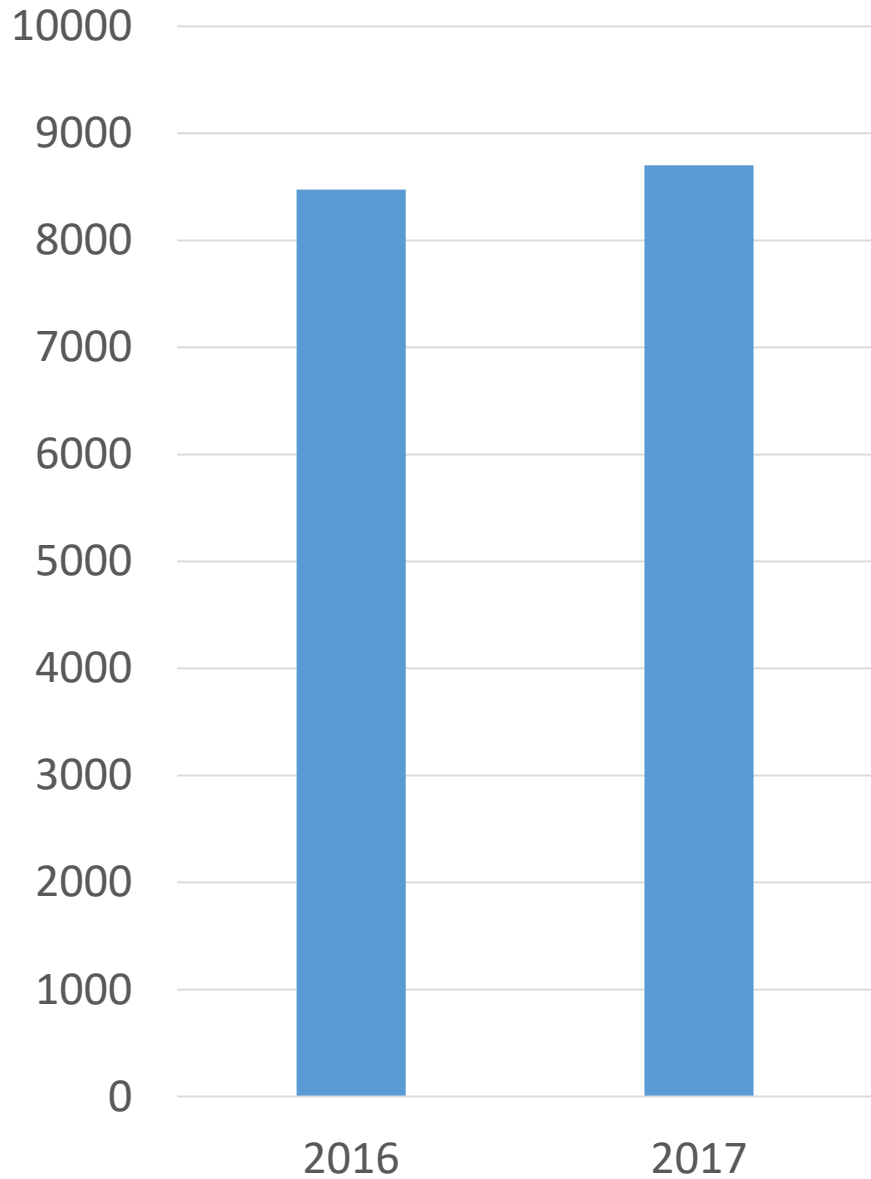
Building permits – July year-to-date



Construction value – July year-to-date

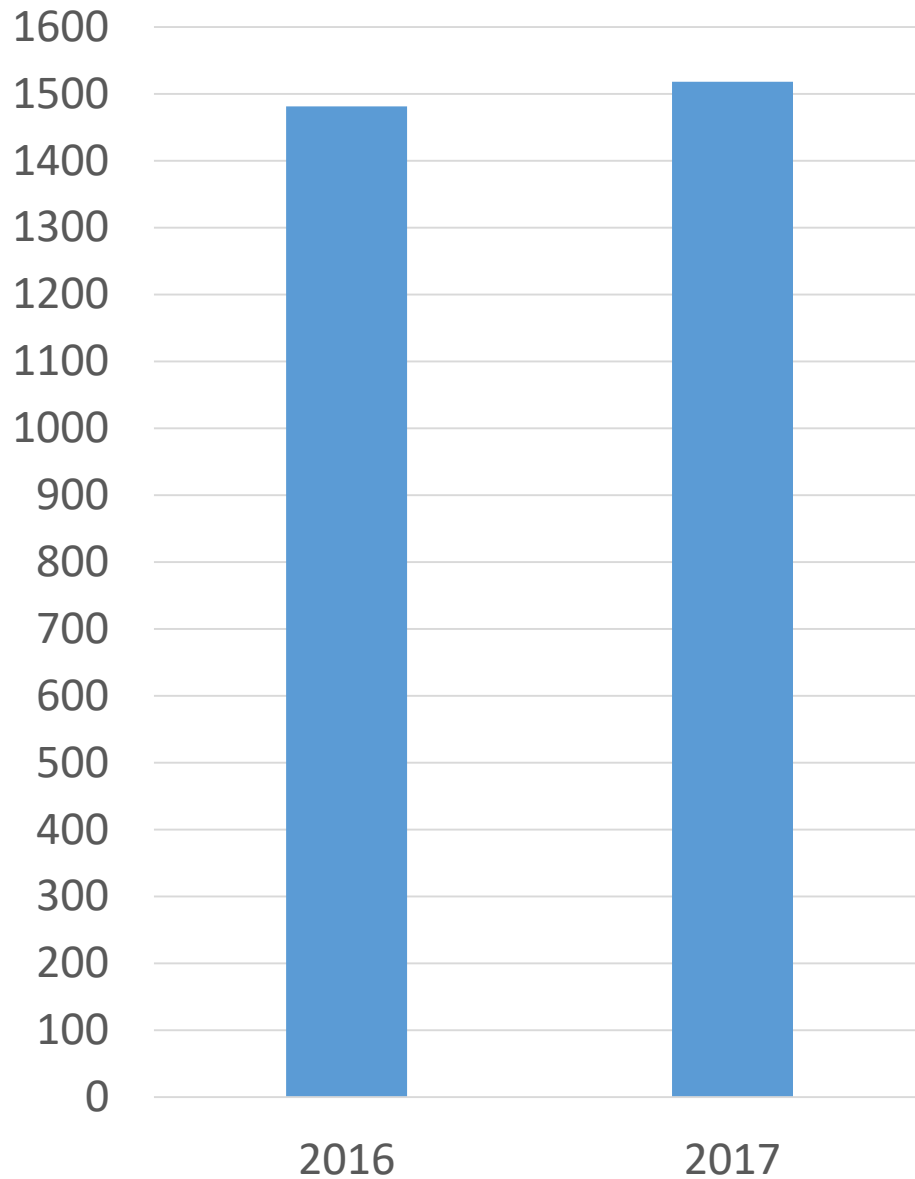


Phone and walk-in inquiries – Q1-



2.7
%

Total permits and applications – Q1-2



2.5
%

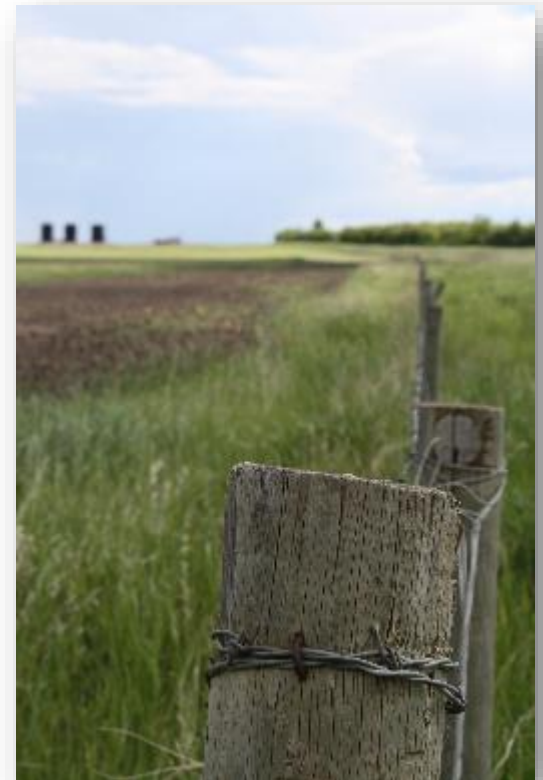


COMMUNITY SUSTAINABILITY UPDATE

DEPARTMENT UPDATE

ALUS PROGRAM

- New Funding 2017
 - \$22,500 Wildlife Habitat Canada
 - \$31,500 W. Garfield Weston Foundation
 - \$110,300 Philanthropic Funding
- ALUS Tour
 - Over 25 participants
 - Toured 3 sites in Lake Isle Watershed
- New acres in conservation
 - 260 in June 2017
 - Total: 988



ENVIRONMENTAL COMPLIANCE

- Compliance audit & management system
 - Audit of facilities complete
 - Audit of operations ongoing
 - Initiated information management
- Contaminated Sites Assessments:
 - Ongoing assessments for medium risk sites and process for encroachment onto County-owned land
- Ongoing technical support for:
 - Reclamation of contaminated sites
 - Land acquisition and disposal

AIR QUALITY MONITORING

- Joined the Alberta Capital Airshed (ACA)
- Installed passive monitoring station in Acheson
- New monitoring data



CLIMATE RESILIENCE FUNDING

Mitigation

- Municipal Climate Change Action Centre (MCCAC) provides TAME grants for GHG reduction
- Includes energy efficiency retrofits
- Received \$3,147 for 20% of LED lighting costs at the Tomahawk Shop

Adaptation (risk management)

- Received grant to complete Climate Resilience Plan
- Plan will outline predicted climatic changes and strategies to avoid related risks
- Stakeholder workshop in November

JACKFISH NATURALIZATION



SUSTAINABILITY AWARDS

- 2017 Winners:

- Agricultural Producer- Kevin Porter
- Business- Rental Bus Lines
- Resident- the Parkland Syndicate
- School- Muir Lake



**SUSTAINABILITY
AWARDS**



SMART PARKLAND

DEPARTMENT UPDATE

CONNECTIVITY

- RFP going out for Entwistle Fibre Pilot Project. Once awarded build will be completed Spring 2018



INNOVATION

- NAIT Partnership. They will be supplying capstone students for Parkland County in the new NAIT Innovation Centre to create solutions for rural communities through the use of technology.



KNOWLEDGE WORKFORCE

- Mobile Maker Space Program. The Parkland County Libraries have had a successful summer with the Makers Space facilitator creating programming through the four libraries. Program has evolved into an inventors club and will be continued until the New Year.



DIGITAL/SOCIAL INCLUSION

- 6 community WiFi spaces completed. Meridian Sports Park, Blueberry Hall, Carvel Hall, Tomahawk Ag, Garden Valley Hall and Parkland Village.



ADVOCACY

- Provincial Broadband Strategy working group made up of municipalities, CRP, Uof A, Digital Futures, Cybera and ONet..

