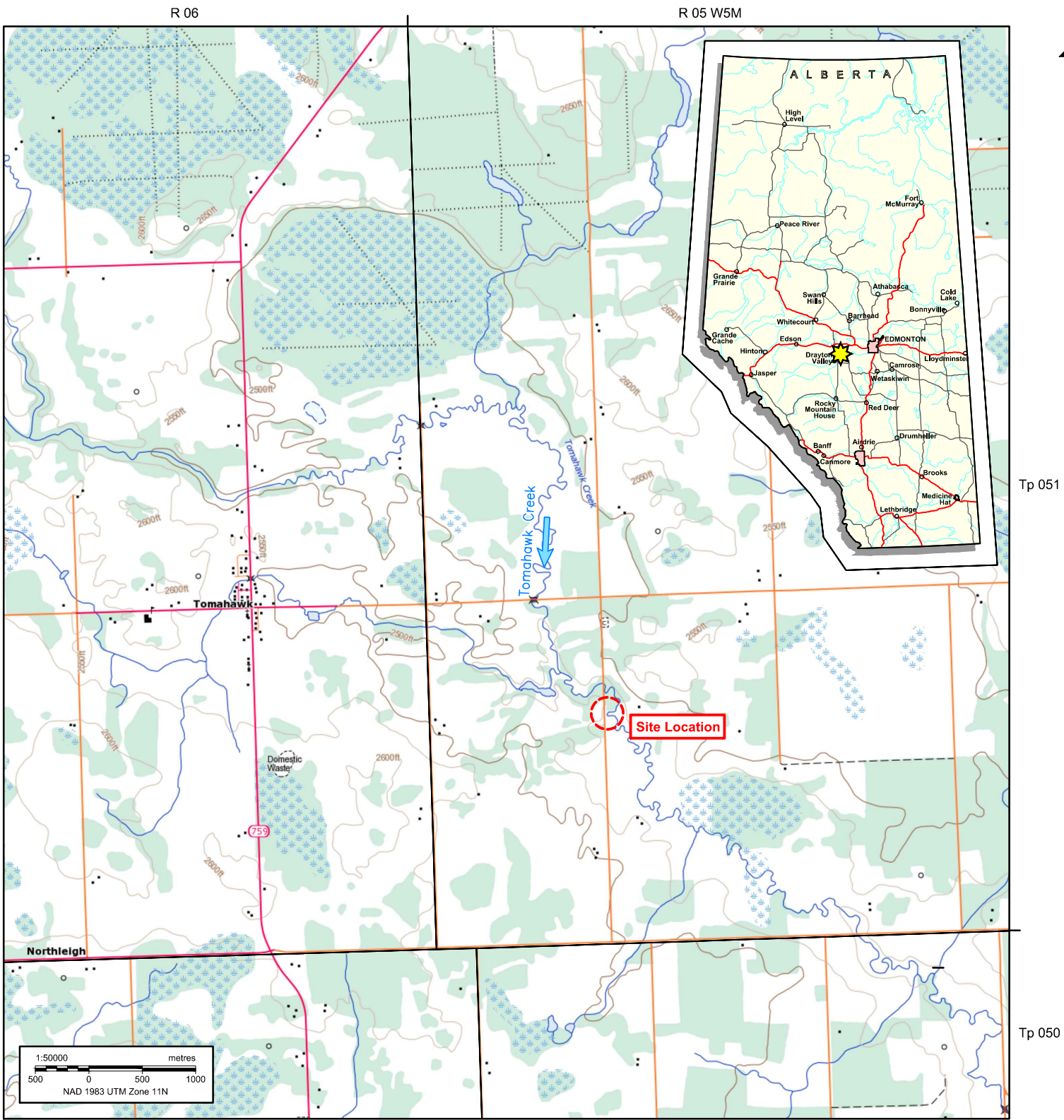


Plot 1:1 = Tabloid (L)

F:\24770\Drafting\CS0522\Production\Figures\24770-LP-17.dwg - LP - Friday, August 04, 2017 9:04:14 AM - Mjia Lee



Reference: Map 083G07 (Tomahawk), Edition 4, UTM Zone 11, NAD 83 © Department of Natural Resources Canada. All rights reserved.015 Image provided by Parkland County and converted to UTM83-11 Datum.

REVISION					
B	2018-08-08	Issued for Client Review	PS	MS	ML
A	2017-08-01	Issued for Client Review	PS	MS	ML
No.	DATE	DESCRIPTION	BY	CHK.	DRN.

Matrix Solutions Inc.
ENVIRONMENT & ENGINEERING

Parkland County
Erosion Mitigation on Road Embankment Tomahawk Creek on Range Road 55, 05-08-051-05 W5M

Location Plan

Date: August 2017 Project: 24770-LP-17 Technical: P. Sandhu Reviewer: M. Shome Drawn: M. Lee

Disclaimer: The information contained herein may be compiled from numerous third party materials that are subject to periodic change without prior notification. While every effort has been made by Matrix Solutions Inc. to ensure the accuracy of the information presented at the time of publication, Matrix Solutions Inc. assumes no liability for any errors, omissions, or inaccuracies in the third party material.

Figure 1