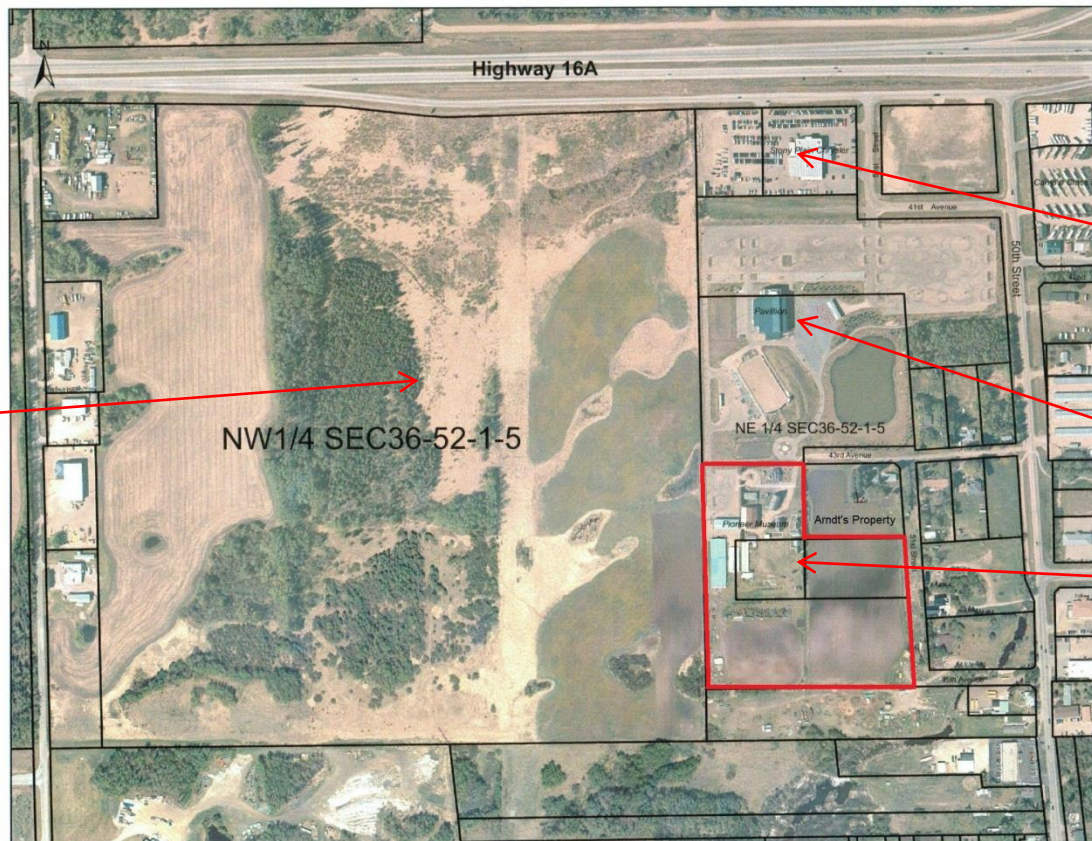


Museum Grounds In Context With Town



Area of future
development



Stony Plain
Chrysler

Town's Heritage
Park Pavilion

Pioneer Museum
Grounds 14 acres

Museum Grounds In Context With Approved Developments



Area of future development



Stony Plain Chrysler

Town's Heritage Park Pavilion

Pioneer Museum Grounds 14 acres

Legend

--- ASP Boundary	Stormwater Management Facility / PUL
Medium Density Residential	Potential Multi-Use Trail
High Density Residential	Existing Business Industrial
Commercial	Existing General Industrial
Environmental Reserve (ER)	Existing Highway Commercial
Municipal Reserve (MR) Park/Open Space	

Figure 4.0
Development Concept

Parkland Gateway
Area Structure Plan
Stony Plain, Alberta

Note:
This drawing is conceptual only.
Development boundaries may be
adjusted at the subdivision stage.



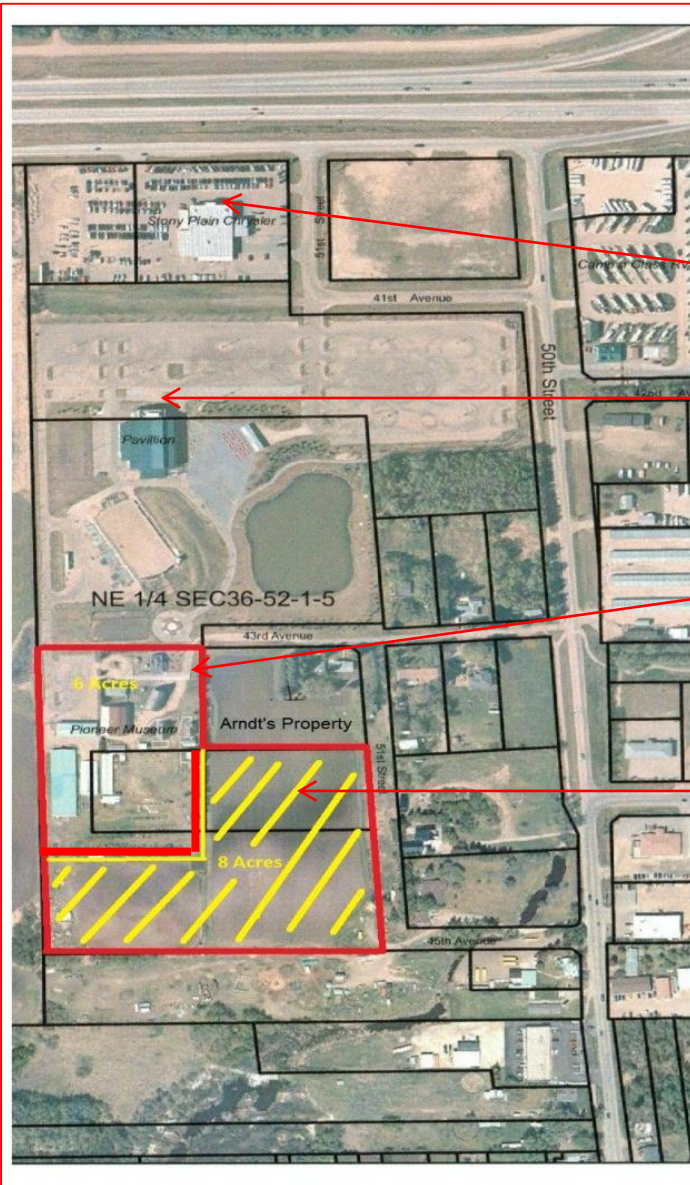
N.T.S.

N

Date: August 2015

Project No: 12-210

Museum Grounds Showing the 8 acres being discussed



Stony Plain Chrysler

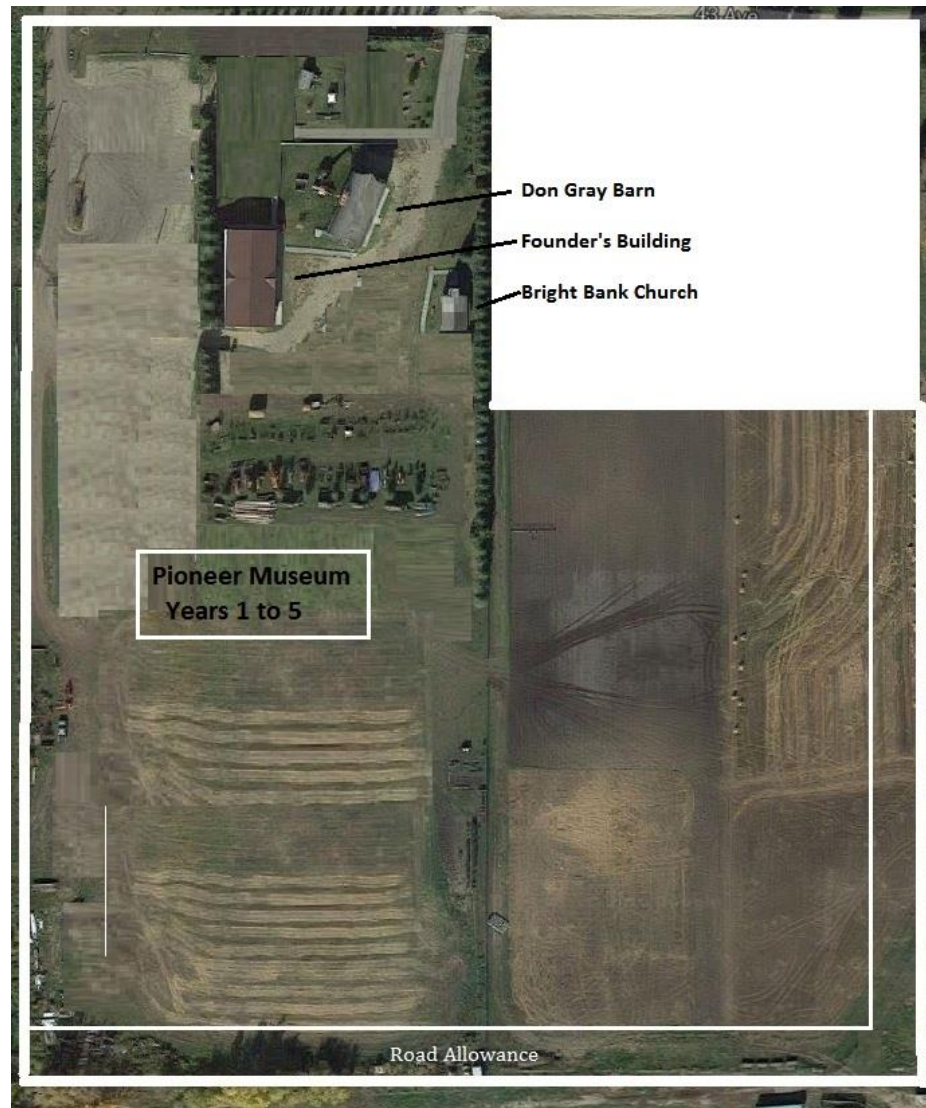
Town's Heritage Park Pavilion

Pioneer Museum

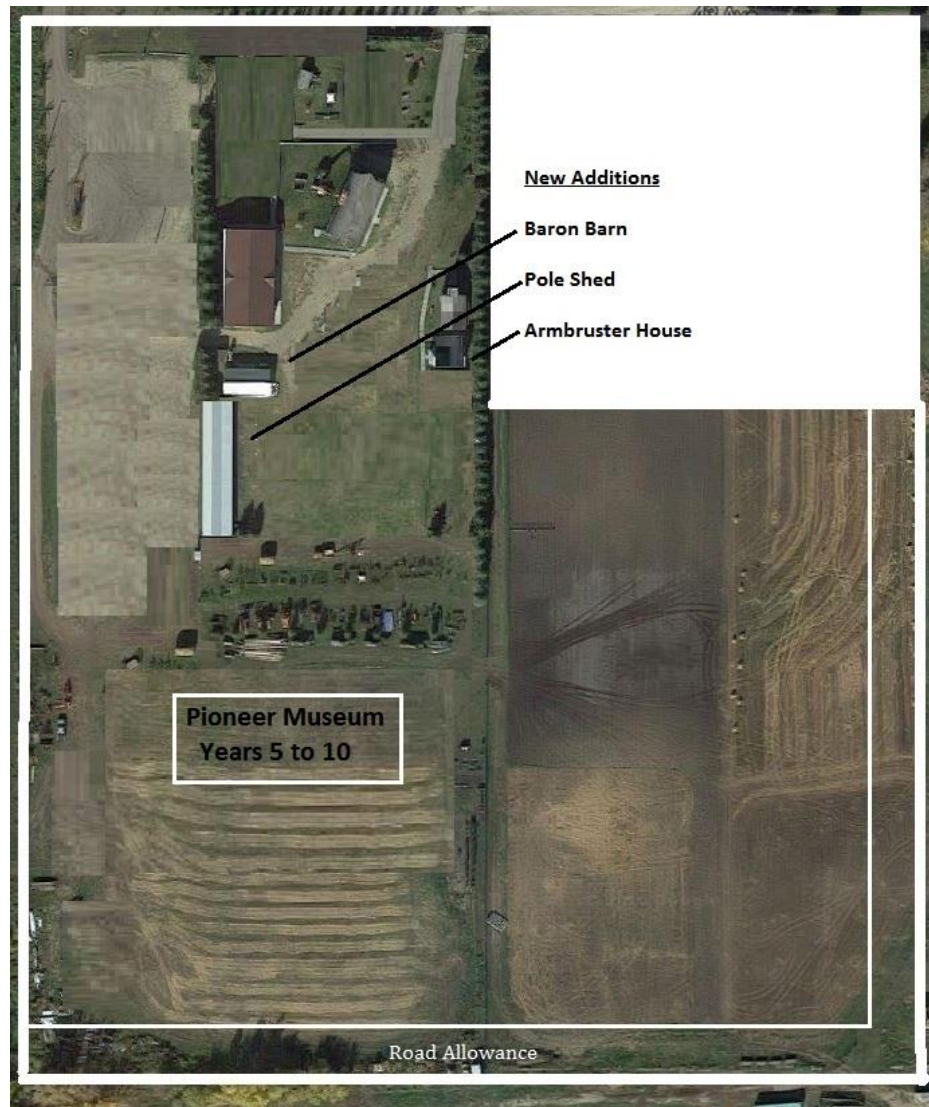
Current Grounds 14 acres in red

Town will commit to Museum having 6 acres guaranteed, but not the 8 acres shaded in yellow. Museum would have use only until lots otherwise used.

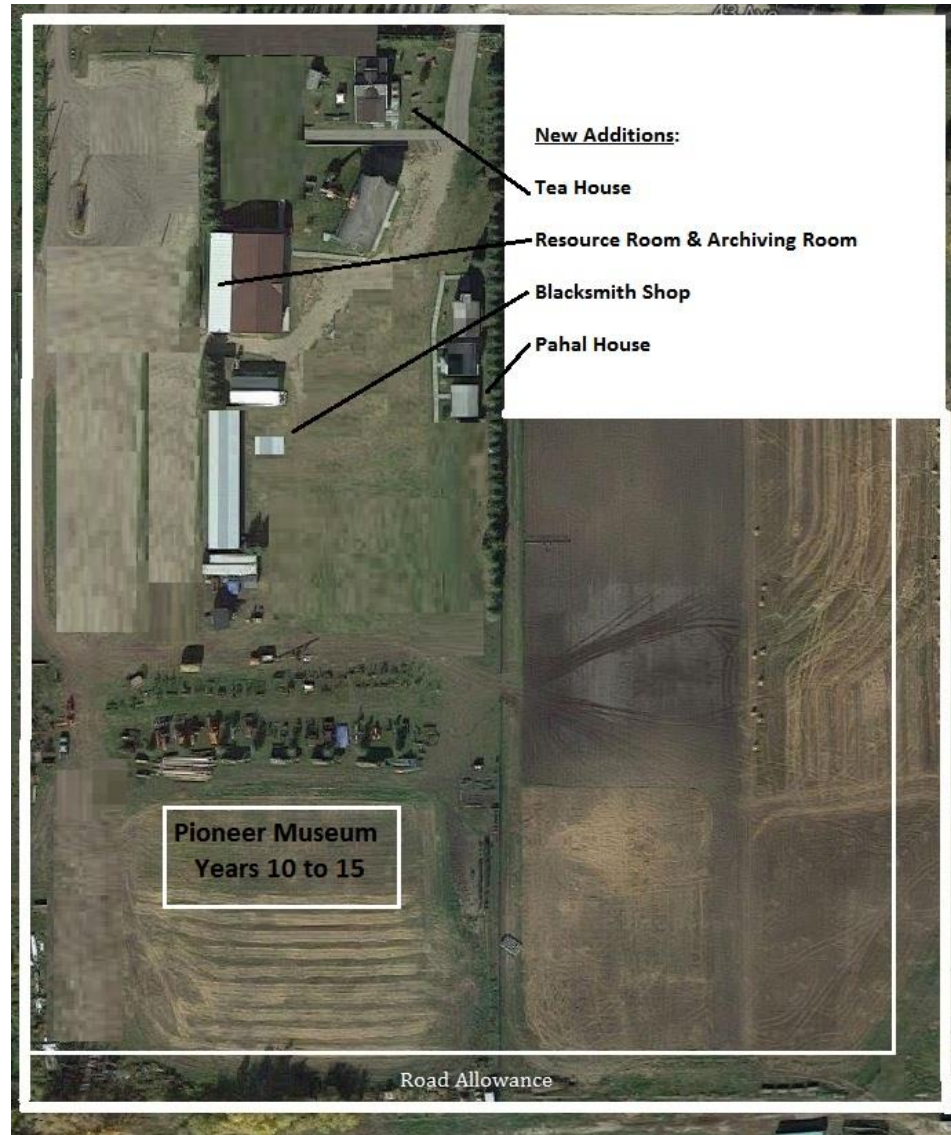
Museum Development: First 5 Years



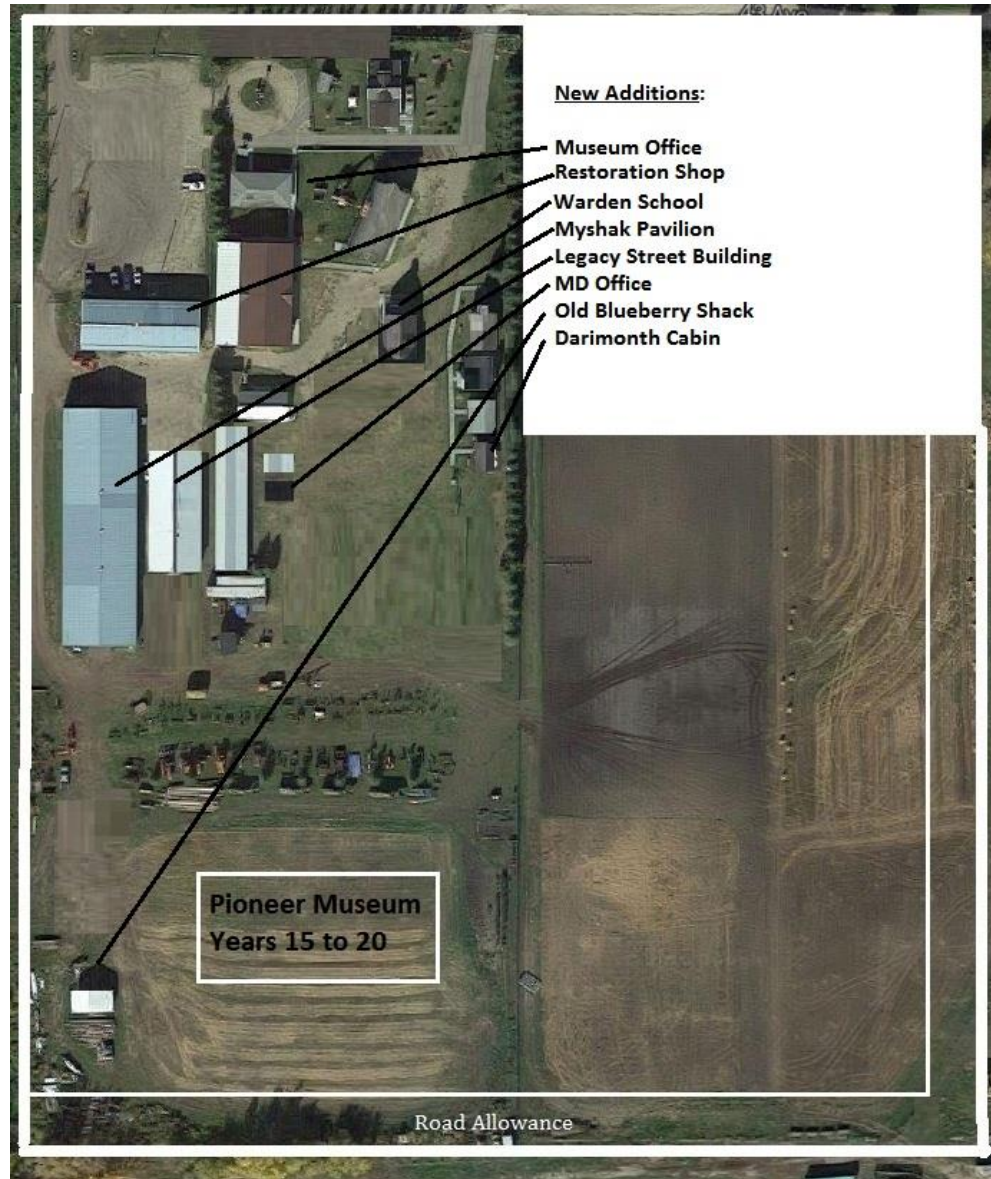
Museum Development: Years 5 to 10



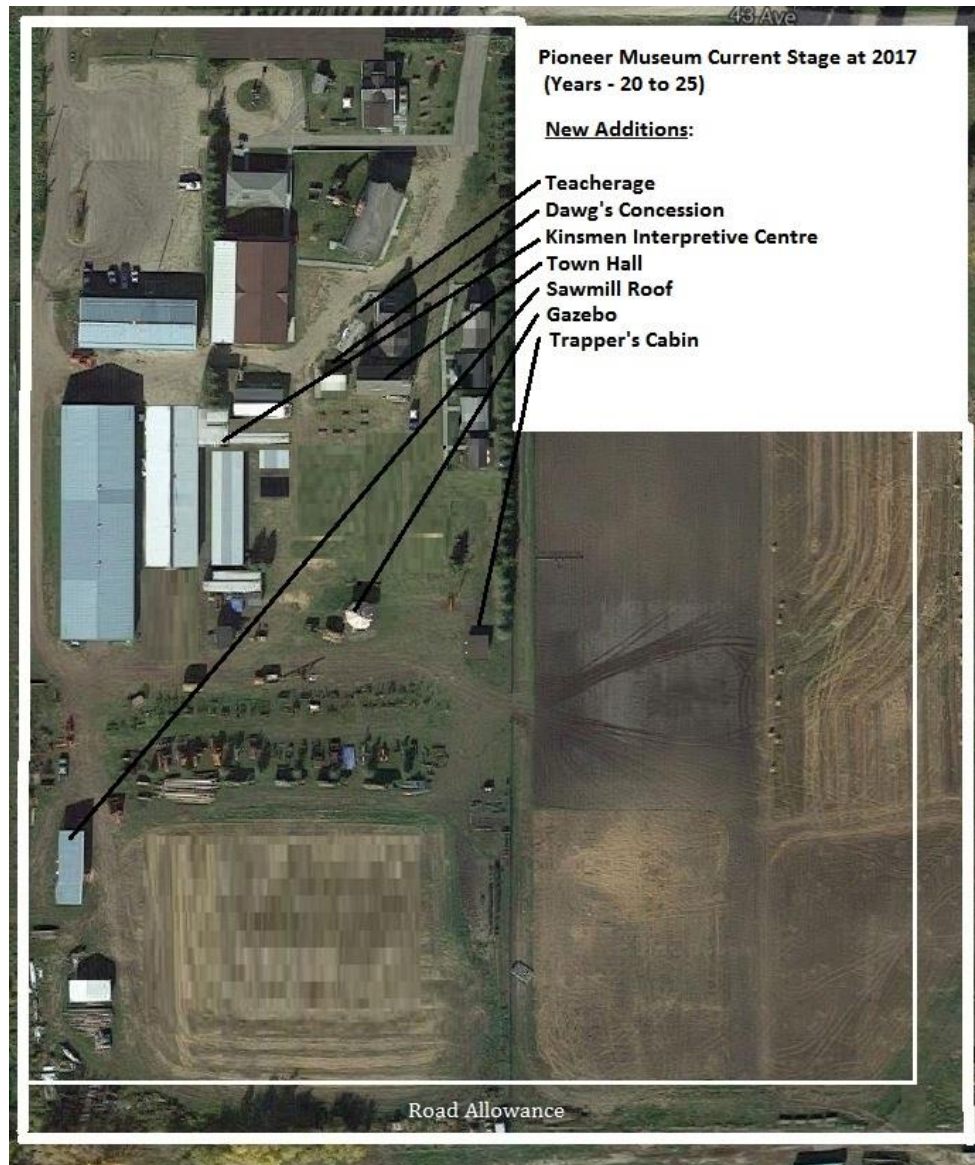
Museum Development: Years 10 to 15



Museum Development: Years 15 to 20



Museum Development: Years 20 to 25 (Current)



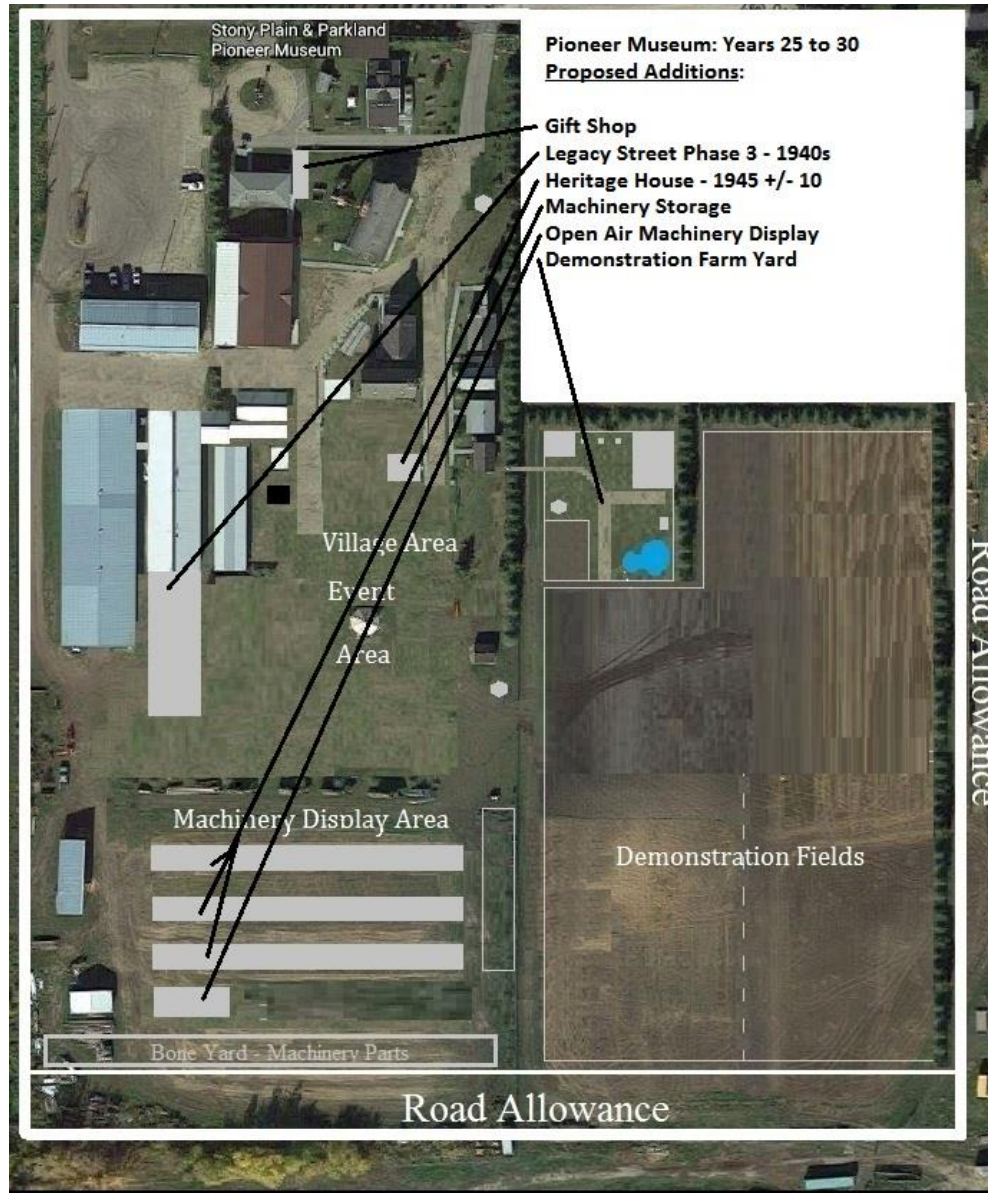
Pioneer Museum Current Stage at 2017
(Years - 20 to 25)

New Additions:

- Teacherage
- Dawg's Concession
- Kinsmen Interpretive Centre
- Town Hall
- Sawmill Roof
- Gazebo
- Trapper's Cabin

Road Allowance

Museum Development: Years 25 to 30 (Proposed)



Museum Development: Years 30 to 35 (Proposed)



Museum Development: Years 35 to 40 (Proposed)



Museum Development: Years 40 to 45 (Proposed)



Museum Development: Years 45 to 50 (Proposed)



Museum Grounds Showing the 8 acres being discussed



Pioneer Museum

Current Grounds 14 acres in red

Town will commit to Museum having 6 acres guaranteed, but not the 8 acres shaded in yellow. Museum would have use only until lots otherwise used.