



**COMMUNITY SUSTAINABILITY COMMITTEE
ICSP RECOMMENDATIONS**

COMMUNITY SUSTAINABILITY COMMITTEE

PURPOSE:

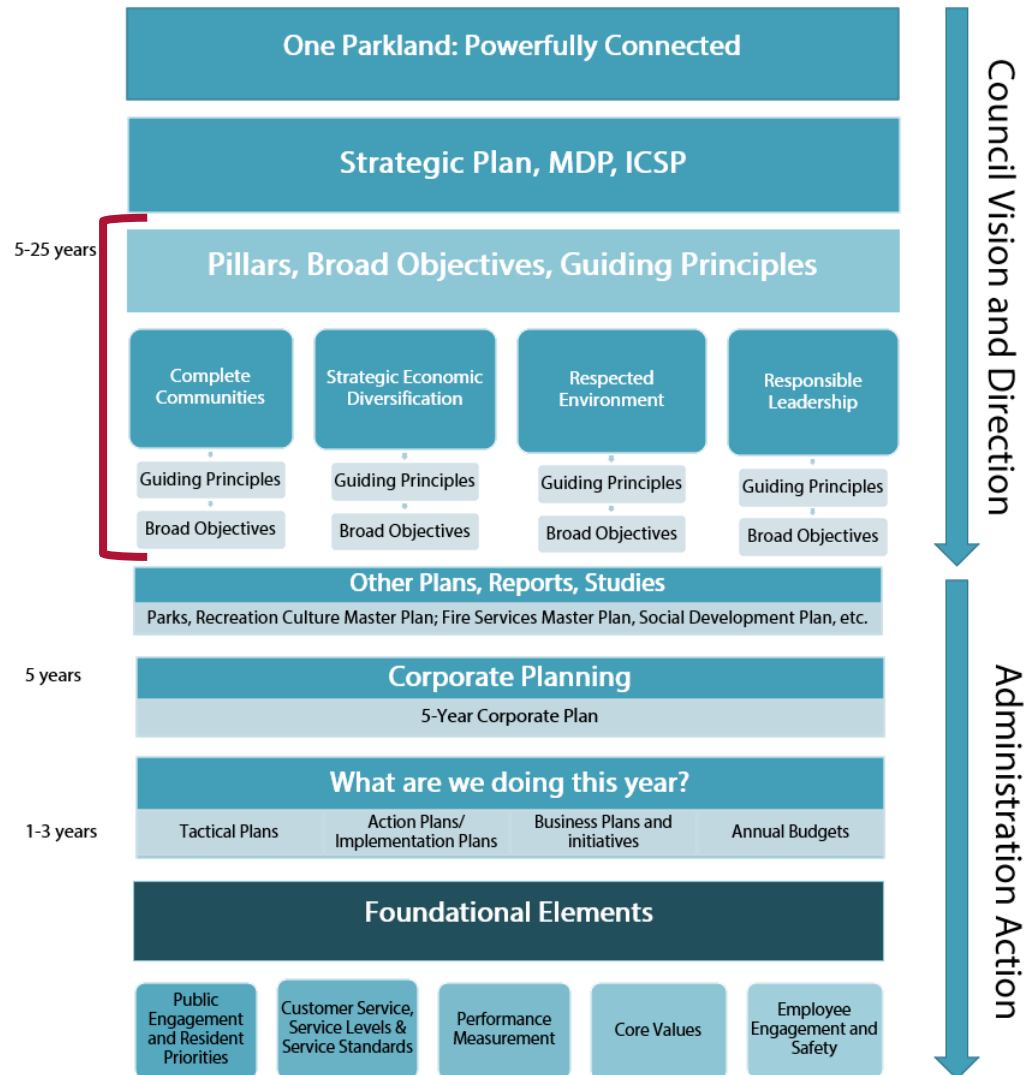
- to consider matters related to healthy communities and environment
- provide advice to Council

CSC - WORKPLAN

Deliverables

Item	Description
Municipal Development Plan (MDP) & Integrated Community Sustainability Plan (ICSP) advice and recommendations	Review plans, obtain feedback from stakeholders, and apply member expertise, to develop advice and recommendations on community needs
Lake stewardship advice and recommendations <ul style="list-style-type: none">• Advice and recommendations on Watershed Plan• Best practices advice	Review lake stewardship practices and plans, obtain feedback from stakeholders, and apply member expertise, to develop advice and recommendations on community needs
Educational review and best practices advice and recommendations	Review education and best practices, obtain feedback from stakeholders, and apply member expertise, to develop advice and recommendations on community needs
Committee metrics for success advice and recommendations	Review and verify committee metrics of success to develop advice and recommendation on committee needs
Recommendations for 2018 work plan	Review section 1.3 Objectives and request Council provide 2018 Deliverables in keeping with the Objectives

STRATEGIC PLAN FRAMEWORK



ICSP PURPOSE

- primary vehicle for planning, achieving and reporting on the success of community sustainability initiatives.
- sets out the long-term path to a sustainable County.
- Five pillars of sustainability
- Eighteen aspirational sustainability objectives
- provides direction for the County for the next 20 to 30 years as to how it can:
 - Promote balanced growth;
 - Ensure healthy ecosystems;
 - Build complete communities;
 - Diversify the economy; and
 - Deliver inclusive governance.

ICSP OBJECTIVES

LONG-TERM SUSTAINABILITY OBJECTIVES



ONE PARKLAND: POWERFULLY CONNECTED |

ANALYSIS

- ICSP history provided by Administration to Committee
- Draft ICSP presented to Committee
- Facilitated Workshop to identify Priorities
- Overall Comments:
 - More comfort ranking objectives than pillars
 - Each pillar is reliant on the others so an integrated approach to implementation is necessary
 - Land use scored the highest because committee felt it was overarching, incorporating aspects of each pillar and struck a balance between objectives
 - Were concerned that they were not well informed of what work Administration had already begun in some areas and if there were some easy, quick wins as that may have impacted how they chose priorities

PILLAR/OBJECTIVE RANKING

Pillar Ranking (With Underlying Broad Objectives – Ranking)		
1st	LAND USE	
	A state in which the community's land use meets community needs now and in the future.	
	1st	<i>Balanced interests and reduced conflict between developed, natural and working landscapes.</i>
	2nd	<i>Complete communities and prosperous hamlets that support live, work and play.</i>

Comments:

- Balanced interest is key
 - Protect ag lands, community character, farms
 - Responsible resource extraction
 - Land Use Bylaw crucial for shaping community and balancing the different needs for ag, subdivisions, hamlets and industry/commercial
- Complete Communities
 - Subdivisions becoming too dense losing rural feel, smaller parcels should be focused on hamlets with servicing
 - Industrial development in west is imperative to support growth
 - Encourage and support entrepreneurship

PILLAR/OBJECTIVE RANKING

Pillar Ranking (With Underlying Broad Objectives – Ranking)		
2nd	ECONOMY	
	A state in which the community's economy is able to generate prosperity now and in the future.	
	1st	<i>Innovative and diversified industrial and commercial development.</i>
	2nd	<i>A vibrant agricultural economy.</i>
	3rd	<i>A diverse and prosperous recreation and tourism market.</i>
	4th	<i>Widespread entrepreneurship and rural diversification of business opportunities.</i>

Comments

- Industrial and commercial development critical given coal impacts
- Opportunities for a vibrant ag and food based economy
- Many Recreation and Tourism opportunities already exist
- Entrepreneurship and rural diversification need supports

PILLAR/OBJECTIVE RANKING

Pillar Ranking (With Underlying Broad Objectives – Ranking)		
3rd	ENVIRONMENT	
	A state in which the demands placed on the natural environment can be met without reducing its capacity to allow living things to live well now and in the future.	
	1st	<i>Functioning natural ecosystems.</i>
	2nd	<i>Quality water supplies supported by healthy and resilient watersheds.</i>
	3rd	<i>Diversion of solid waste from landfills.</i>
	4th	<i>Climate change resiliency and good air quality.</i>

Comments

- Protection of our natural ecosystems is what makes Parkland County special
- Water vital for residents, eco systems and recreation
- Opportunities for County to control and expand on diversion of solid waste
- Need to focus on what can be done at local level

PILLAR/OBJECTIVE RANKING

Pillar Ranking (With Underlying Broad Objectives – Ranking)		
4th	COMMUNITY	
	A state in which the community's social and cultural traditions thrive now and in the future.	
	1st	<i>A vibrant rural character, sense of community and strong local heritage.</i>
	2nd	<i>Good quality of life for all residents.</i>
	3rd	<i>A variety of lifestyle options, recreational amenities and facilities.</i>
	4th	<i>Empowered, included and valued community members.</i>

Comments

- Rural character is what defines us and makes us unique
- Quality of life is why we live here
- Parkland County has an abundance of recreational opportunities
- Empowered, included and valued community members was seen as a given across this pillar as well as the others

PILLAR/OBJECTIVE RANKING

Pillar Ranking (With Underlying Broad Objectives – Ranking)		
5th	GOVERNANCE	
	A system of government which maintains the capacity and the resources necessary to function now and in the future.	
	1st	<i>Progress in achieving corporate and sustainability objectives.</i>
	2nd	<i>County operations that create a partnership culture with community members.</i>
	3rd	<i>Effective regional partnerships that build resilience and improve efficiency.</i>
	4th	<i>Responsible, balanced, and transparent decision-making.</i>

Comments

- Important to report on activities, impacts and effectiveness
- Approachability of staff and Council key to serving residents and finding solutions when they are needed
- Leveraging resources with partners important, need to make sure Parkland maintains their voice
- Low on list as this is already a strength for Parkland County

CONCLUSION

The Community Sustainability Committee recommends that the Committee of the Whole accept the report as information and further: direct administration to incorporate these recommended priorities into their corporate planning process.