

# CN in Your Community Alberta, Winter 2018

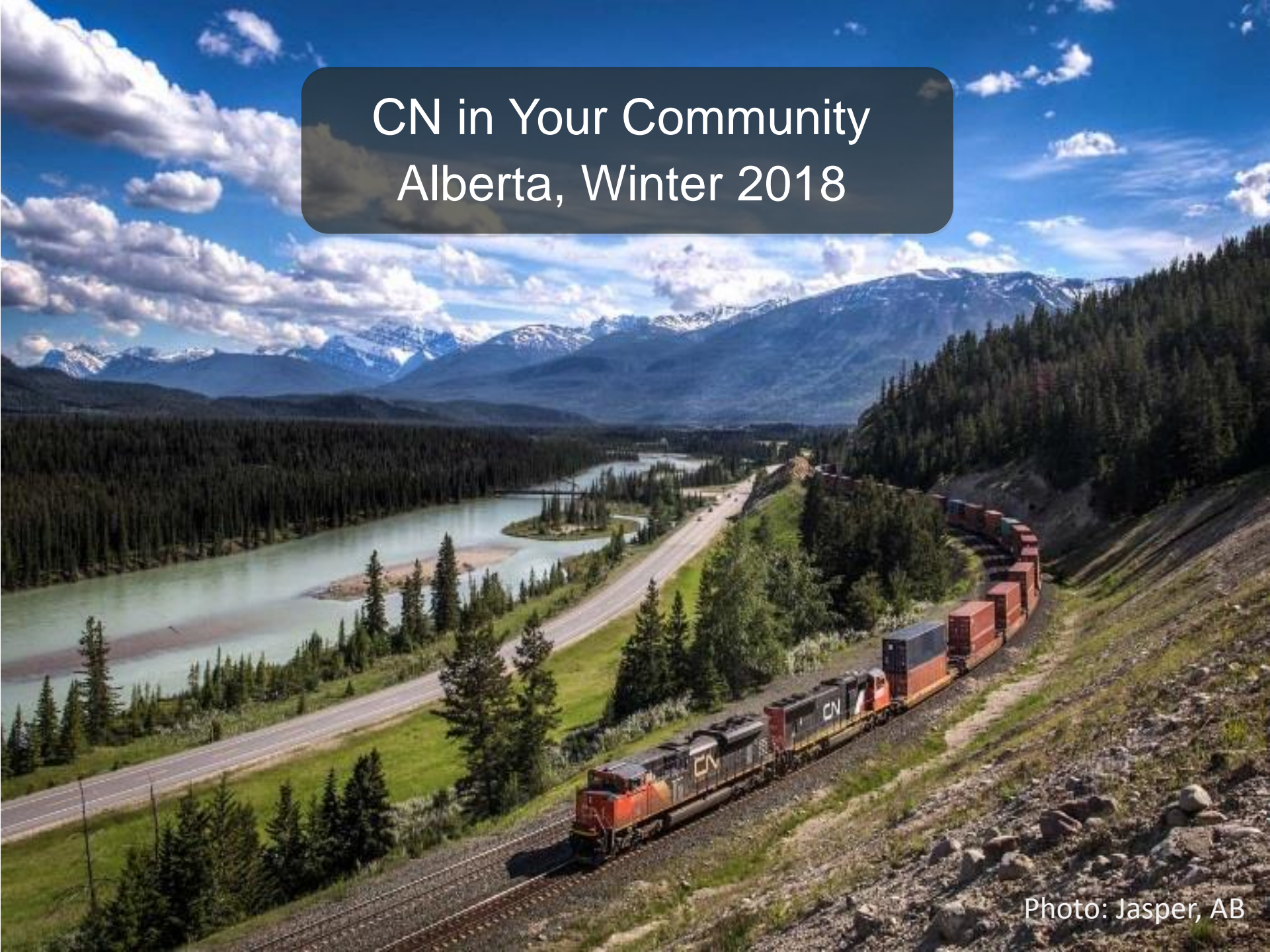
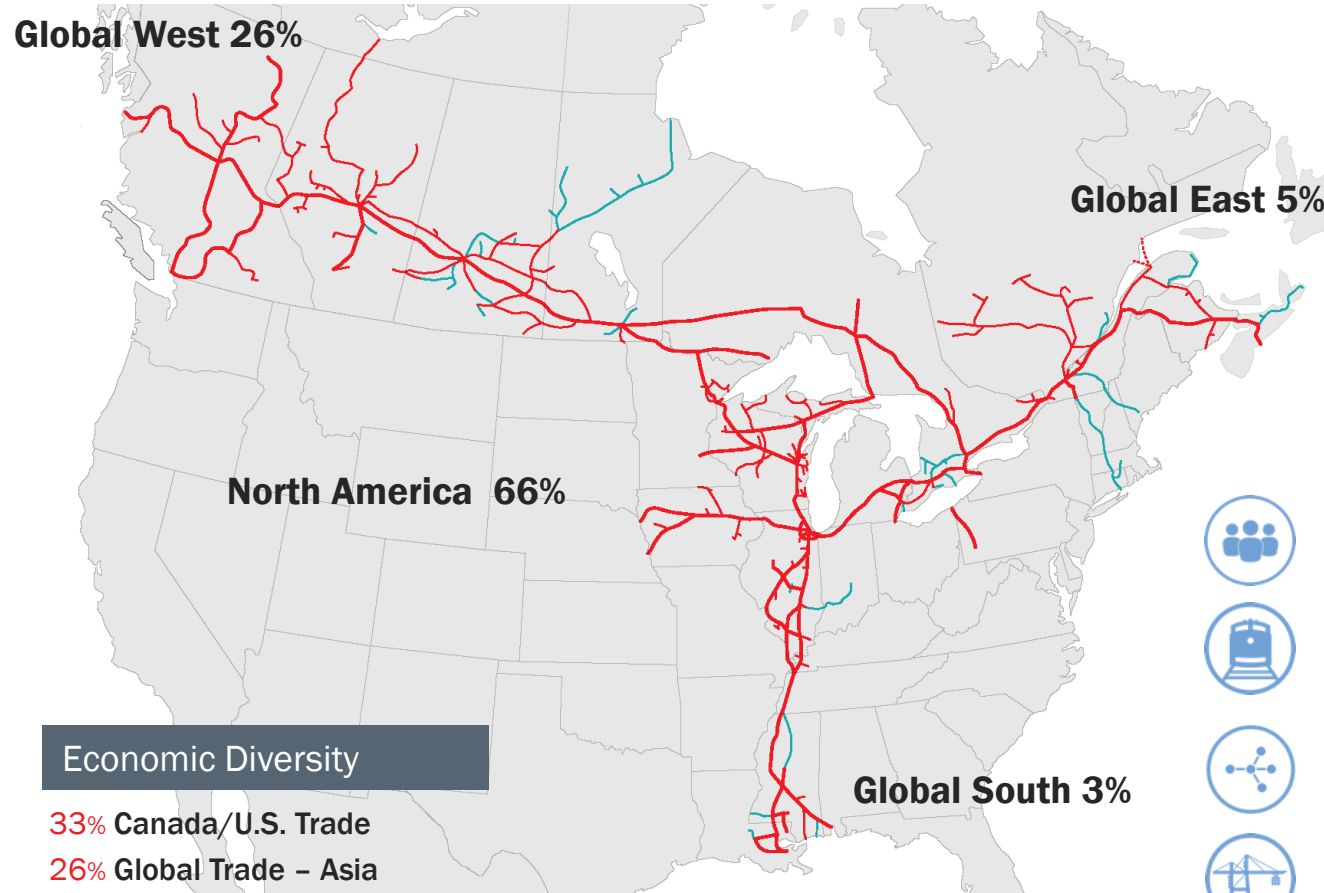


Photo: Jasper, AB



# CN in Numbers

## Moving the Economy



### Economic Diversity

- 33% Canada/U.S. Trade
- 26% Global Trade – Asia
- 17% Domestic Canada
- 16% Domestic U.S.
- 5% Global Trade – Europe
- 3% Global Trade – South America

Based on 2017 revenues



24,000 employees



20,000 route-miles



Unique 3 coast reach,  
accessing over 75% of  
NA's population



Moving 20% of Canada's  
export traffic



Enabling over \$250 billion  
worth of trade annually





# CN in Alberta

## Employees

- 2390 railroaders
- hundreds of Independent contractors

## Operations

- 2473 route miles
- Growing amounts of intermodal container traffic through Calgary and Edmonton intermodal terminals
- Home to logistics park, 2 automotive distribution facilities, a forest products distribution centre and a CN CargoFlo bulk handling centre

## Investments in 2017

- \$261M in capital investments
- 607 New hires
- \$85M in cash taxes paid

## Community Partnerships

- In 2017, CN invested Approx. \$500K in 29 Alberta- based organizations, including:

Alberta Fire Chiefs Annual Gen. conf. (2017)

United Way

Stollery Children's Hospital Foundation

SnoMo Days – Alberta Beach

Alberta is significant for CN





## Investment in Safety

- \$3.2 billion in 2018
- \$19 billion over 10 years
- Investment focused on hardening CN's core infrastructure, advancing safety
- Construction helps boost local economies, supports good jobs across Canada
- Purchased 200 new high-power AC locomotives
- Hired 3,500 people in 2017, with another 2000 in 2018







## Transport Canada *Protective Direction 36*



- Canada's railways worked with Transport Canada and the Federation of Canadian Municipalities to develop *Protective Direction 36*. Under PD 36, CN provides registered municipalities with:
  - Reports on the Dangerous goods that move through a community
  - A standardized format for presenting data through CANUTEC
  - Public version of the PD 36 report that can be shared with community
- Dangerous goods data provided to communities includes:
  - Information on the number of unit trains
  - Percentage of railway cars transporting dangerous goods
  - Information on the nature and volume
- CN posts on its Web site information about DG movements broken down by province, updated annually



# Training for First Responders



- Training already part of our process
- Program enhanced
- 226 training sessions in Canada in 2016.  
55 training sessions in Canada in the first two quarters of 2017.
  - 23 in Alberta
- 3,742 first responders trained in Canada in 2016. 853 first responders trained in Canada in the first two quarters of 2017.
  - 390 in Alberta
- Training components:
  - In-class exercises
  - Simulations
  - Tank Car Specialist course, Pueblo, CO



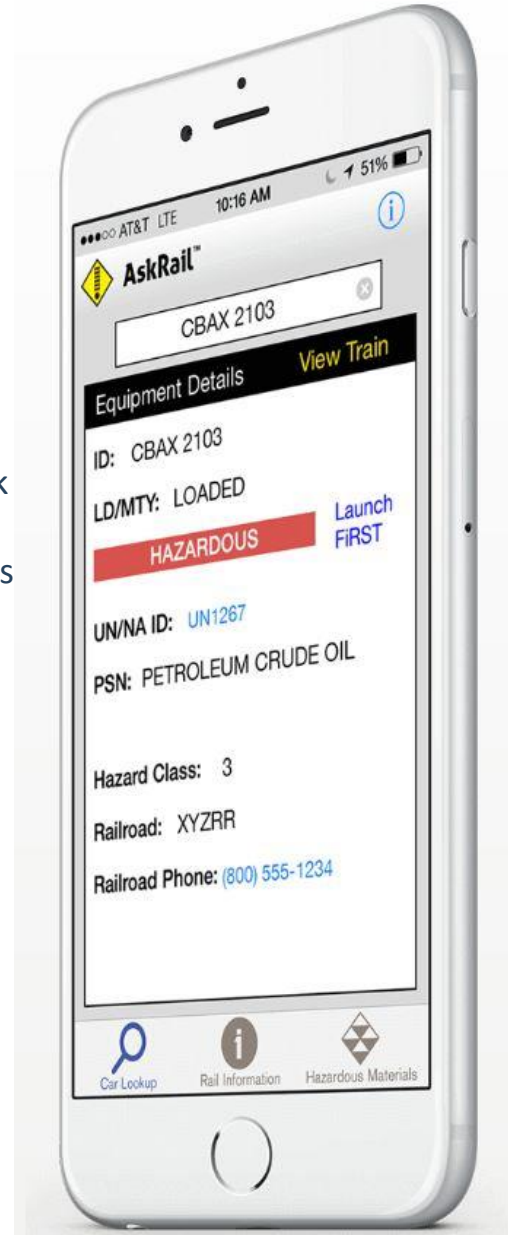
Giving first responders the information they need to keep their communities – and themselves – safe



# AskRail™ Real Time Car Information

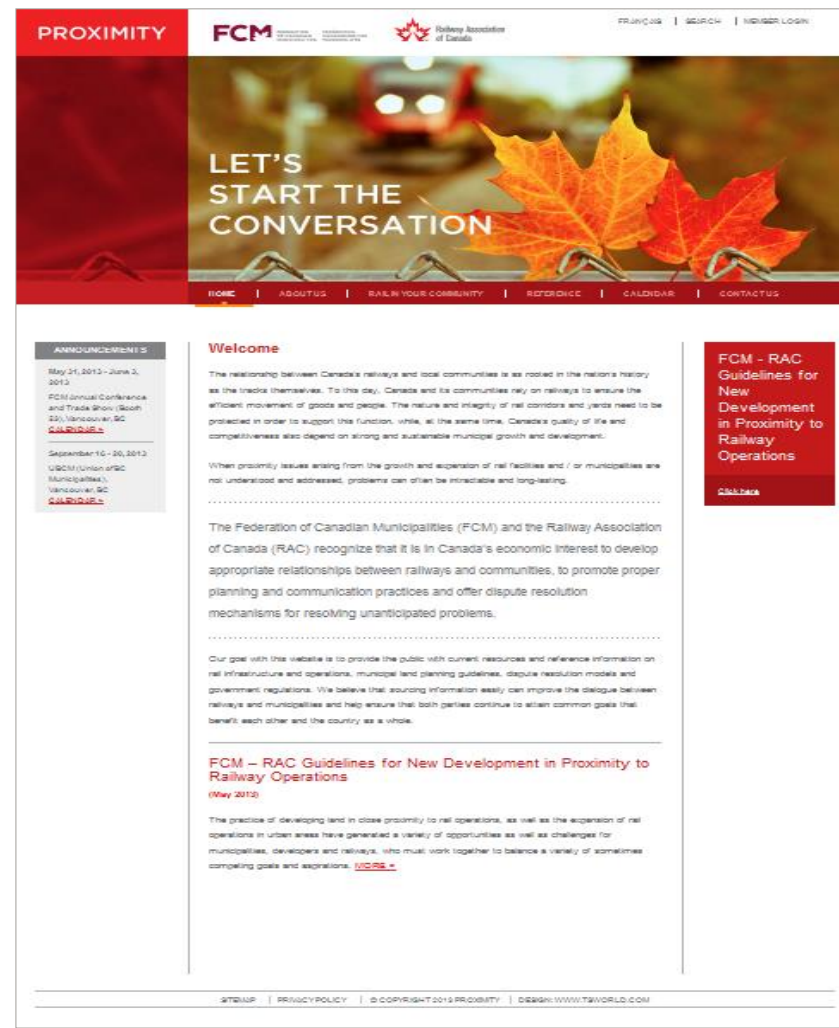
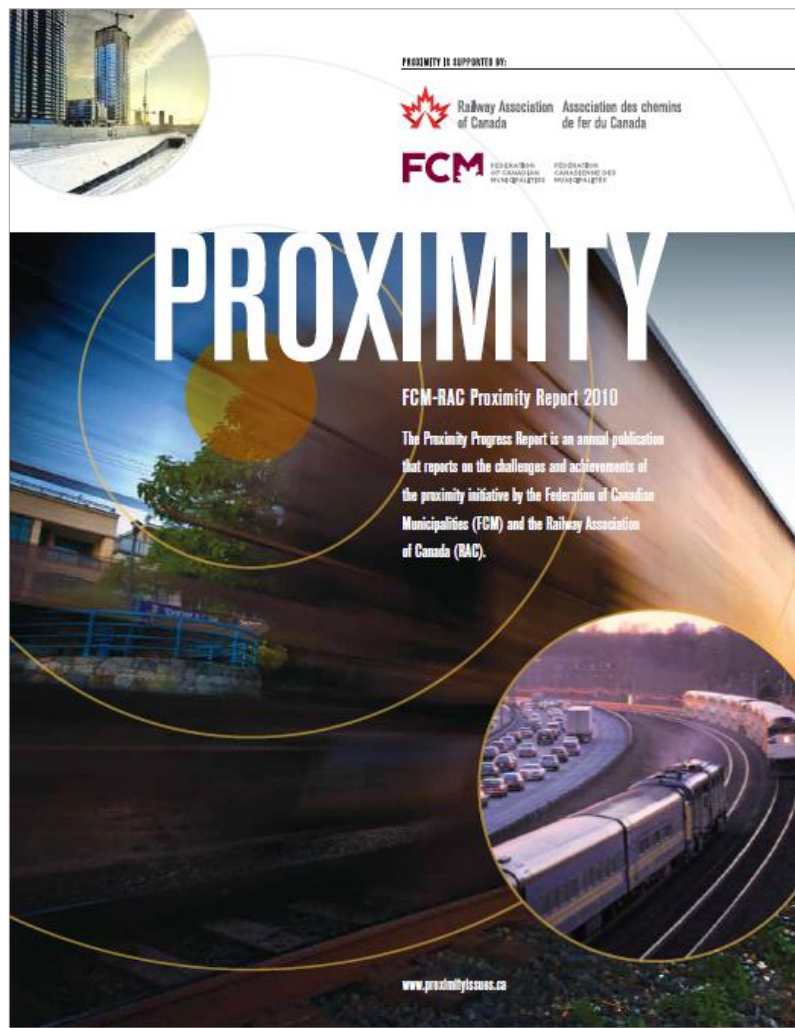
- Real time information to first responders
- See whether a railcar is carrying dangerous goods
- View the contents of an entire train
- View Emergency Contact Information and Emergency Response Guidebook
- Available to first responders for a railway incident and for training purposes
- Improvements with new features and enhancements
- Available in French
- <https://www.cn.ca/en/safety/municipalities/ask-rail#>

**CN has registered more than 1,500 responders  
in Canada from nearly 300 locations**





# Proximity – A Shared Responsibility







# Transport Canada Grade Crossing Regulations

- Aimed at reducing the number of accidents at public and private grade crossings
- Came into effect on November 28, 2014
- New crossings must comply to regulations by 2021.
- Objectives:
  - Establish safety standards for grade crossings
  - Bring a consistent level of safety to all railway crossings in Canada
  - Clarify the roles and responsibilities of railway companies and road authorities
  - Promote collaboration between those parties





## Safety Statistics



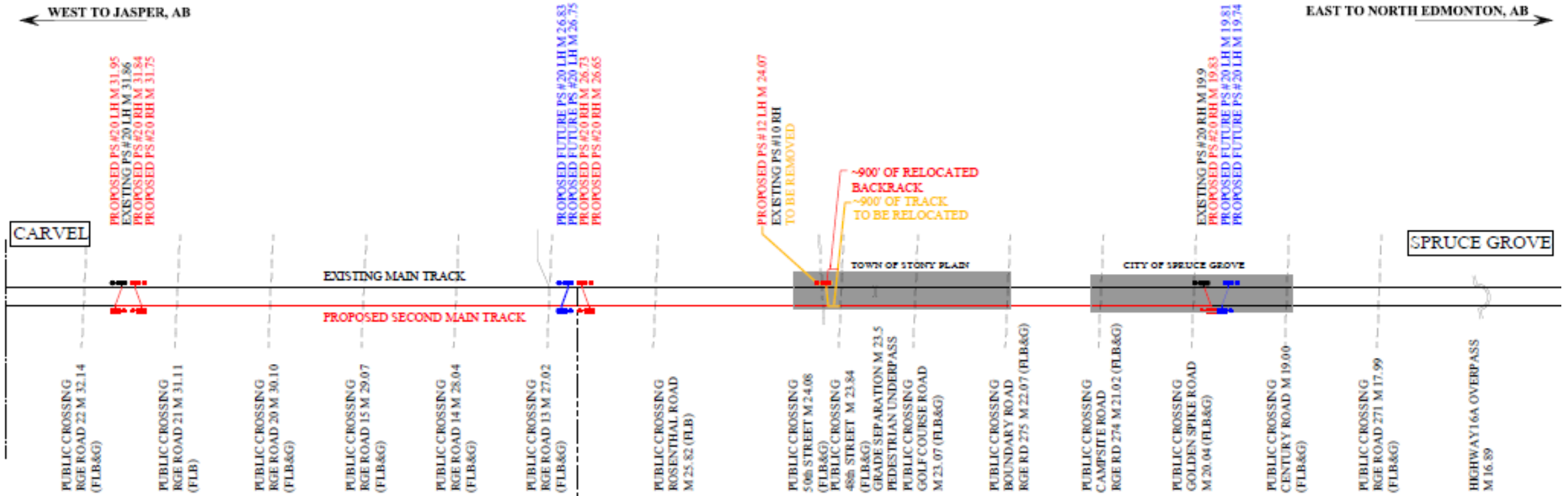
- Parkland County is part of a key corridor for CN Police which extends from Acheson to Wabamum.
- Trespassing and crossing enforcement are the two main areas of focus based on previous data, calls for service and observations by CN Police.
- Parkland County has not seen a large number of crossing incidents
- Trespassing is the main concern
- We work to engage our key stakeholders to reduce incidents and promote railway safety
- Track Speed along the route is a max. of 60 MPH Freight / 70 MPH Passenger

Keeping Your Community Safe





# Track Construction 2018



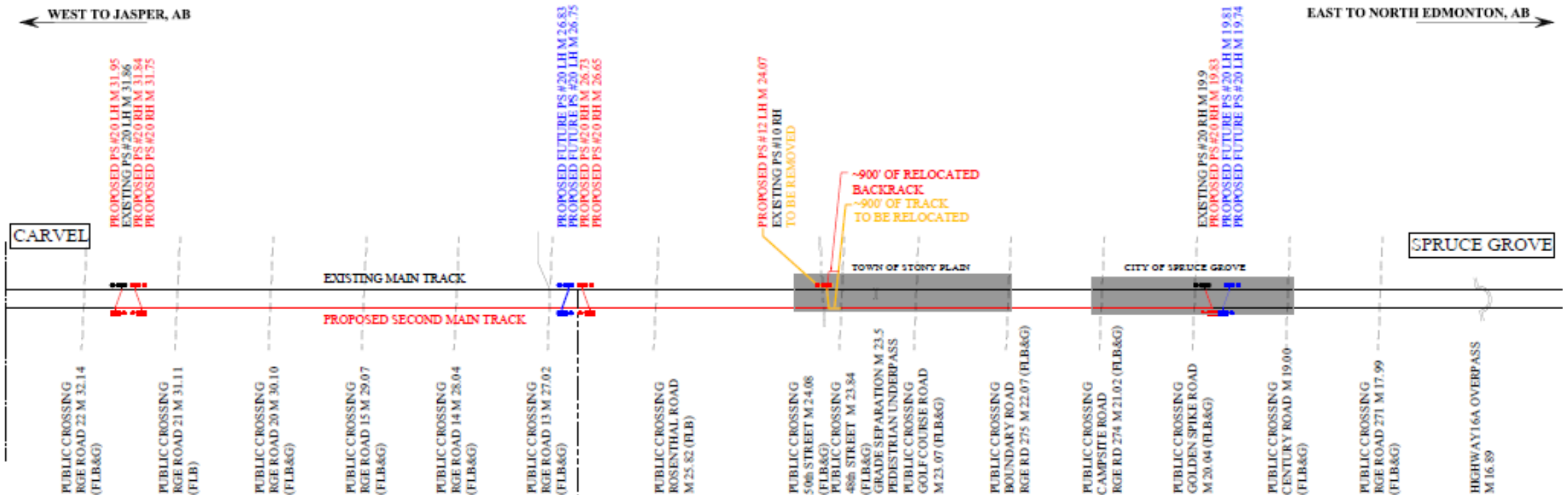
## Purpose of the Project

- Connecting two pieces of double track
- Increase efficiency through the corridor
- To support and meet continued demand of our growing customers



## Track Construction 2018

- **Construction Start Date:** May 2018
- **Goal Complete Date:** November 2018
- **Crossing Construction:** Coordination with affected road authority and contractor (*award in process*)
- **Communication for Crossing Closures:** As per the road authority's requirements







## Benefits to your Community

- Reduce trains parked on sidings
- Trains can maintain a higher average speed
- Move through crossings in less time
- Crossings Improvements
- Protects the Canadian Economy



Thank you! Questions?

