



# The CHANGE Centre

Dr. Doug Klein

Family Physician

[doug.klein@ualberta.ca](mailto:doug.klein@ualberta.ca)

May 7<sup>th</sup>, 2019

---

# MEET JASON

---

# MEET ABBY

---



## **A Complex Problem...**

Health care costs are increasing.

Education costs are increasing.

Justice costs are increasing.

Population is getting sicker and inequities are deeper and more complex.

Multiple systems involved.

No silver bullet solutions.

Clinical /sterile solutions for dynamic contextual unique populations.

Need to do something different.

Need a health protection and improvement program.

## **A New Iteration...**

A multi-partner relationship that authentically bridges perspectives and systems.

Focus of system leverage points – child/teacher.

Empower communities to design facilitate and evaluate solutions.

Deliver co-designed solutions with community partners.

Share responsibility and risk of litigation through system partnership.

Inter-sectoral and Inter-professional programs.

**TIME FOR CHANGE**

---

**CANADIAN HEALTH ADVANCED BY  
NUTRITION AND GRADED EXERCISE**





**Community  
Needs Assessment**

**Community  
Partnerships**

**Community  
Engagement**





SE  
WILL  
PH  
GRA







# The Vision

All families have access to the resources they need to live healthy lives.

Focus on children and youth

Focus on low income families

Inclusive

- Spruce Grove

- Stony Plain

- Parkland County

- First Nations



# Principles of CHANGE HEALTH

Nutrition and meal preparation,

Physical activity and lifelong fitness,

Mental health and wellbeing,

Strong family relationships and community connections

# Family Program

Building skills around meal preparation, physical activity

Mental health, social connection

Dedicated family time



# Why Parkland?

Opportunity for collaboration between health care, education and community

The facility is located in Parkland County

Increase use of existing resource in the region

Leverage current project to create legacy for the residents of Parkland County

Fills an important needs in the community



# The Ask

## Major Capital Cost Share Funding

The cost to purchase and improve the facility is between \$1.8 Million and \$2.0 Million

Will build connections between health care, education, government and the community

# Program Benefits

Support Children and Families in the community

Give Teens Opportunities

Bring People together to make a Healthier Community


Improve access to service through co-location

Co-design solutions that work for the community

# CHANGE Model for Delivery and Innovation

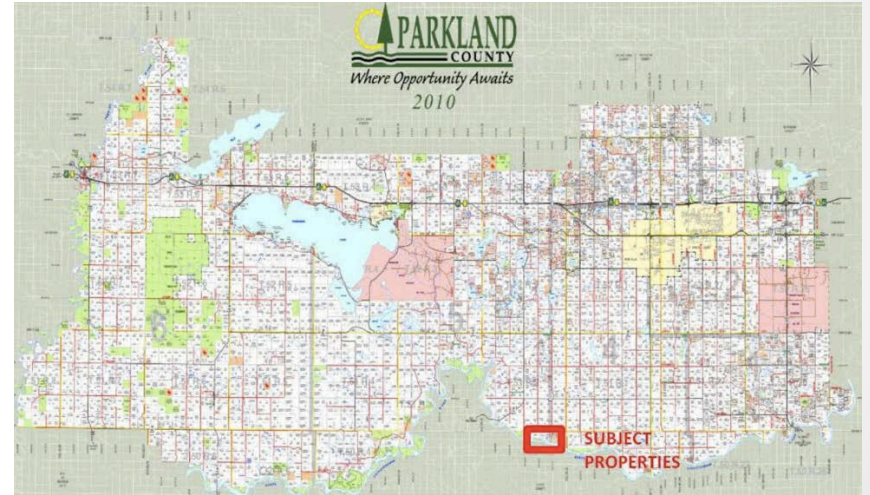
## CHANGE Partners

University of Alberta Faculty of Medicine and Dentistry Dept. of Family Medicine

Strategic Partners	Government Partners	Academic Partners	Delivery Partners
<ul style="list-style-type: none"> <li>• ABC Benefits Corporation</li> <li>• Metabolic Syndrome Canada</li> <li>• Obesity Canada (Canadian Obesity Network)</li> <li>• Institute of Health Economics</li> <li>• Alberta Medical Association</li> </ul>	<b>Provincial</b> <ul style="list-style-type: none"> <li>• Ministry of Health</li> <li>• Alberta Cancer Prevention Legacy Fund</li> <li>• Alberta Health Services (Strategic Clinical Networks)</li> <li>• Ministry of Education</li> <li>• Ministry of Advanced Education</li> <li>• Ministry of Economic Development and Trade</li> <li>• Alberta Primary Care Networks</li> </ul>	<ul style="list-style-type: none"> <li>• Women and Children's Health Research Institute</li> <li>• University of Alberta</li> <li>• Faculty of Medicine and Dentistry</li> <li>• Faculty of Education</li> <li>• Faculty of Kinesiology, Sport and Recreation</li> <li>• Faculty of Agricultural, Life and Environmental Sciences</li> </ul>	<ul style="list-style-type: none"> <li>• Alberta Health Services (Nutrition Services, Provincial Primary Care)</li> <li>• University of Alberta Botanical Gardens</li> <li>• Ever Active Schools</li> <li>• Edmonton Public Schools</li> <li>• Parkland School Division</li> <li>• City of Edmonton</li> <li>• Edmonton Catholic Schools</li> <li>• REACH Edmonton</li> <li>• Multicultural Family Resource Society</li> <li>• RCMP</li> <li>• Edmonton Oliver Primary Care Network</li> <li>• Westview Primary Care Network</li> <li>• Prairie Gardens</li> <li>• John Janzen Nature Centre</li> <li>• Boys and Girls Clubs/Big Brothers and Sisters</li> <li>• Community Leagues</li> <li>• Family Care Psychology</li> <li>• Sobey's Grocery Store</li> <li>• Tri-Leisure Recreation Centre</li> </ul>
17			

# CHANGE Centre













A woman with dark hair and glasses, wearing a black zip-up jacket over a blue shirt, is smiling broadly and high-fiving two people. She is standing on a wooden bridge or walkway. The two people she is high-fiving are seen from behind; one is an older man with grey hair wearing a green shirt and a backpack, and the other is a younger person with brown hair in a ponytail wearing a black jacket. The background is filled with lush green trees and foliage, suggesting a park or natural setting. The overall mood is positive and encouraging.

*“Be the change you want to  
see in the world.”  
- Gandhi.”*





# ADVENTURE CAMP

Fuelling Your Body for Adventure



**Community  
Needs Assessment**

**Community  
Partnerships**

**Community  
Engagement**