



ACHESON AREA STRUCTURE PLAN UPDATE

PRESENTED FOR INFORMATION
SEPTEMBER 1, 2020

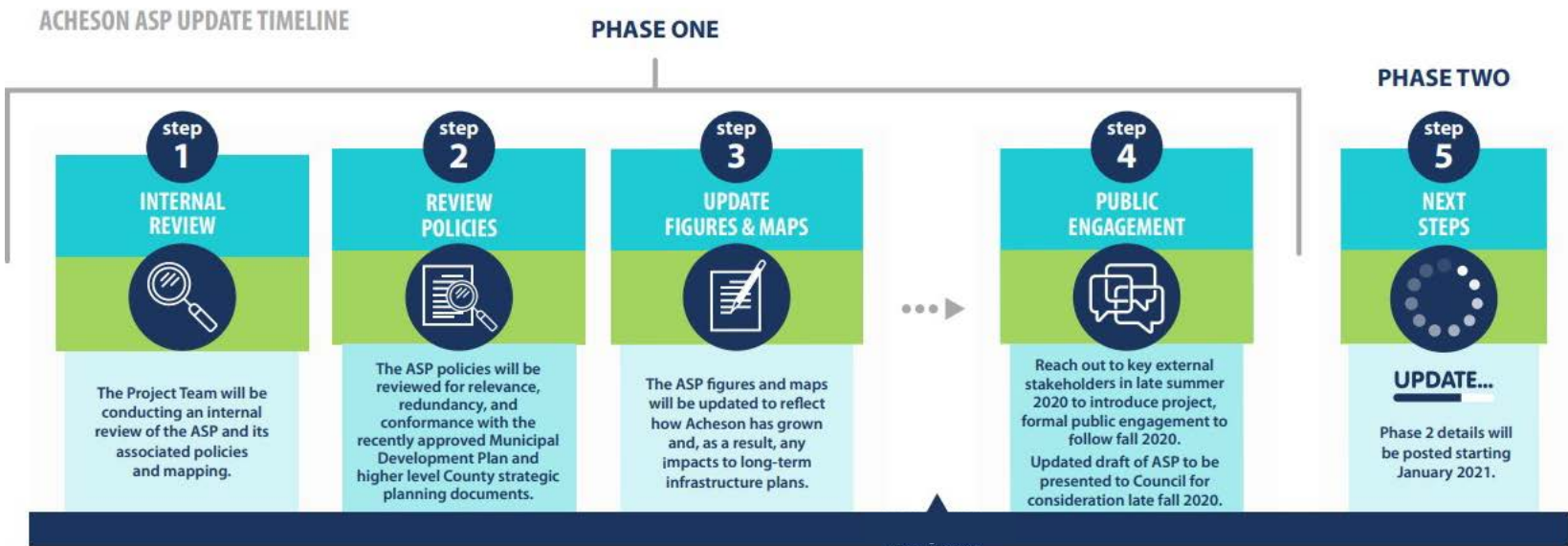
PRESENTATION OVERVIEW

- Progress To Date
- Items of Interest
- Upcoming Stakeholder Engagement



PROJECT STATUS UPDATE

PROJECT TIMELINE



We are here
as of August 2020

PROGRESS TO DATE

- 1** **policy review + gap analysis**
- 2** **internal review**
- 3** **preliminary engagement**

PROGRESS TO DATE | **policy review + gap analysis**

- Administration Reviewed:
 - Municipal Development Plan
 - Engineering Master Plans (Water, Wastewater, Stormwater and Transportation)
 - Edmonton Metropolitan Region Growth Plan
 - Industrial ASPs within the region

PROGRESS TO DATE | **internal review**

- Review of existing ASP conducted by Steering Committee
 - Engineering Services
 - Current Planning
 - Fire Services
 - Economic Diversification
 - Community Sustainability
- Conducted one-on-one meetings with affected departments

PROGRESS TO DATE | **preliminary engagement**

- Met with municipal and regional partners
 - City of Edmonton
 - City of Spruce Grove
 - Enoch Cree First Nation
 - Alberta Transportation
 - Edmonton Metropolitan Region Board (EMRB)
- Preliminary email notification to external stakeholders
- Project webpage available on County website.

ITEMS OF INTEREST

1

New ASP Document Layout

2

Infill Development

3

Local Plans

ITEMS OF INTEREST | **New ASP Document Layout**

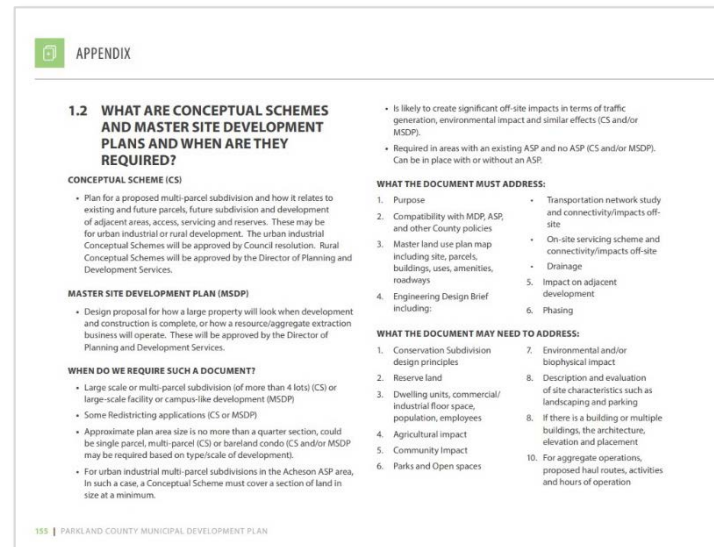
- New ASP document layout has been developed
- Acheson Industrial ASP will be the first ASP in new layout
- Intended to:
 - be more accessible to all audiences
 - Standardize graphics and mapping
 - Use best practices in graphic design

ITEMS OF INTEREST| **Infill Development**

- Review identified greater opportunity for infill development
- Could include:
 - Subdivision of underutilized or larger lots
 - Redevelopment or expansion of existing buildings
- Policy Direction may include:
 - Incentivization
 - Local Plan policies
 - Direct Administration to further study underutilized lands

ITEMS OF INTEREST | Local Plans

- Municipal Development Plan requires completion of Conceptual Schemes (CS) and/or Master Site Development Plans (MSDP)
- Local Plan = Reference to CS and MSDP
- ASP will refine existing terms of reference



UPCOMING STAKEHOLDER ENGAGEMENT

FOCUSED STAKEHOLDER SESSIONS

- Meet with developers, local resident association, business associations and relevant interest groups
- Engage on emergent topics such as infill development and local plans

OPEN HOUSE SERIES

- Tentative Dates:
 - In-person Open Houses: Sept. 23 and 24, 2020
 - Virtual Open House: Sept. 21-25, 2020
- NOTE: Engagement options will be subject to provincial public health requirements

QUESTIONS?