



parkland
county
libraries

DUFFIELD

ENTWISTLE

KEEPHILLS

TOMAHAWK

WABAMUN

Presentation
Mayor & Council
June 15, 2021

The Library Team



Brenda

Rena

Charlotte

Chris

Rebecca

The Library Team



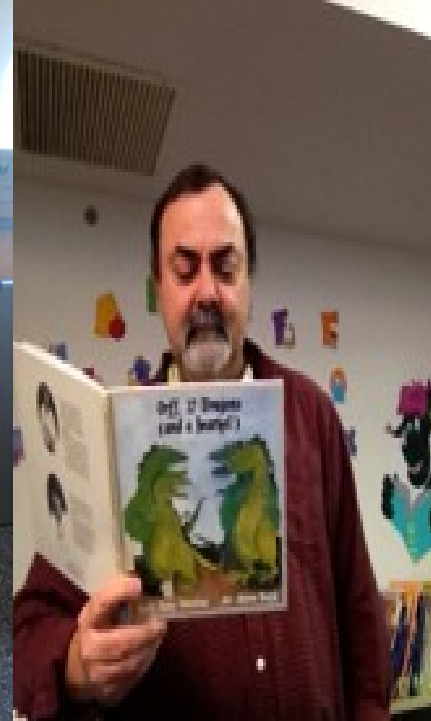
Lareina



Britney



Kathy



James



Val

Welcome Wabamun!



New Entwistle Public Library!

ENTWISTLE PUBLIC LIBRARY



THE NEXT CHAPTER



Entwistle Public Library: Grand Opening November 2, 2020
The Next Chapter

2020 Annual Report

Annual
Report
2020



Annual
Report
2020



The library had **6010** open hours in 2020!



752 people have a library card

Although physical buildings were closed for part of the year, open hours remained consistent and we had **4,944** people walk through our doors or utilize our curbside pickups



There were **4419** visits to our website:
www.pclibraries.ca



The library added **2,426** new items last year



Bringing the total collection to **57,764**



There were **4,580** downloads of e-Content



Contributing to a total of **22,875** checkouts!



We lent **13,995** of our items to other libraries



And brought in **8,171** items upon

Service is delivered by our library team of 10:

Brenda Baron, Rebecca Brookhart, James Bryl, Valerie Craddock, Kathy Gardiner, Chris Goerz, Lareina Lisitza, Britney Robinson, Charllotte Smelski, and Rena Traxel



The library participated in **6** promotional events and **45** outreach programs



Where **1,077** people participated and heard our message



There are computers, devices and printing available at each library



The library offers free one-on-one computer support and delivered a total of 90 sessions through our Digital Literacy Programs



There were also **8,823** connections to our Wi-Fi

Hotspots were lent to 79 patrons and were on loan to community organizations, program facilitators during the pandemic



We offered **42** programs for children



55 programs for adults, teens and seniors



And **14** for families



860 people attended in total!

	CLOUD LIBRARY eBook platform (counted apart from our eBook circulation stats)	PRESSREADER: Today's newspaper from around the globe	ALBERTA eBOOKS (counted apart from our eBook circulation)	LYNDA.COM (Online classes, training and tutorials)
Year	TOTAL CIRCS	ISSUES READ	TOTAL CIRCS	TOTAL VIEWS
2020	64,003	91,574	80	19,194
2019	31,955	75,244	43	Not Available

eResources Use 2020 & 2019

Microsoft Teams Essential Training
Excel Essential Training (Office 365)
Time Management: Working from Home
Communicating with Confidence
Efficient Time Management
Online Marketing Foundations
Outlook Essential Training (Office 365)
Learning Zoom
Microsoft Collaboration: SharePoint, Teams, and Groups

YRL member library most accessed from Lynda.com:

Library Hotspots

Library
HOTSPOT 

BORROW THE INTERNET



One on One Tech Support Every Wednesday!

Entwistle Library (1st Wednesday)

Keephills Library (2nd Wednesday)

Tomahawk Library (3rd Wednesday)

Duffield Library (4th Wednesday)

Call Catherine David: 780-919-9794

With funding from

Canada

Introduction to QuickBooks®

If you are wanting to build your employment skills, you might want to consider QuickBooks. QuickBooks is the most popular accounting software in the world. This course will teach you how to set up a chart of accounts, create invoices and receipts, reconcile your bank statements and so much more.

JAN. 16, 2021

Library Services Curbside



“PICK ME UP” KITS

supporting mental health
and happiness through
libraries

5 Pillars of Mental Health
in each kit!

- Creativity
- Exercise
- Connection
- Nutrition
- Sleep





Teen Lit Loot

Register by March 1st
Pickup after March 9th

Sign up for our first ever book subscription service. Each bag is filled with YA (Young Adult) books, crafts, snacks and special surprises each month starting in March.

Register online at www.pclibraries.ca, pick programs, pick teen lit loot. Or call your local librarian for assistance. You must re-subscribe each month to get a bag.



Parkland County Libraries
Duffield, Entwistle, Keephills, Tomahawk, Wabamun.
www.pclibraries.ca
Instagram @pclibraries_teen



Pick Me Up

Adults

February-June

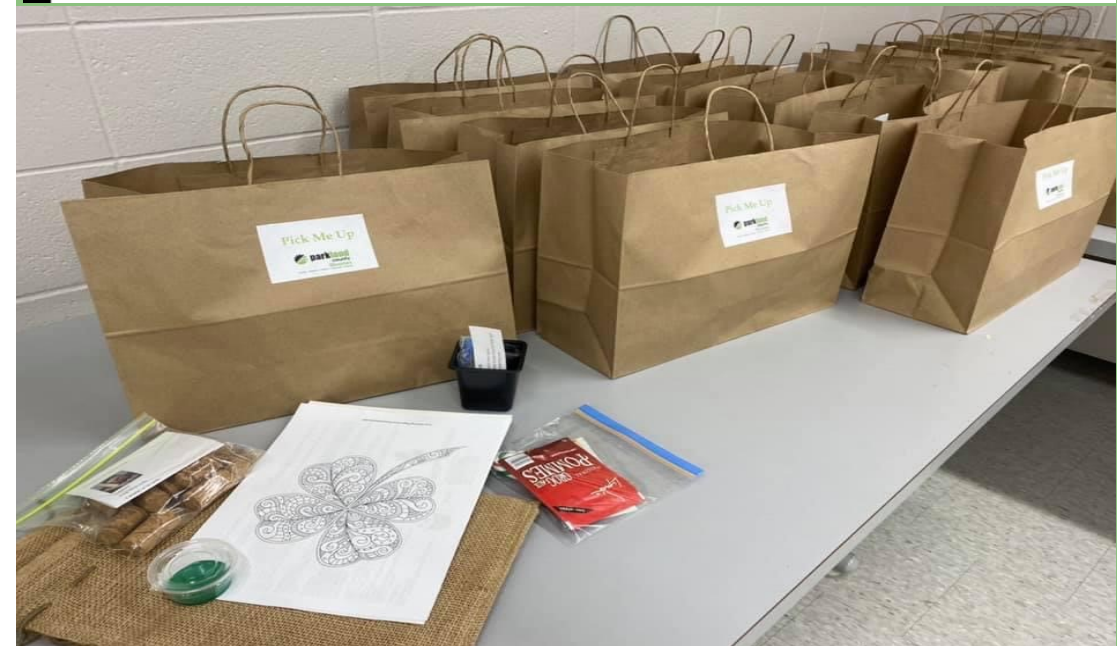
Add some joy to your day with a craft, savour a delectable treat and soak up other surprises included in this monthly pick me up created for adults.

Register online at pclibraries.ca, select programs, select pick me up. You must re-register each month to receive a kit.

Register by the 1st of the month. Pickup mid month (we will call or email you when ready).



Parkland County Libraries
Duffield, Entwistle, Keephills, Tomahawk, Wabamun.
www.pclibraries.ca
Facebook @pclibraries
Instagram @pclibraries



Inventors Club at Home



Virtual Builders Club



Inventors @ Home

Ages 7+

For fans of Inventors Club, we bring you Inventors @ Home. Each month pick up your STEAM themed challenge. Complete 3 out of the 4 challenges and get a prize in June.

Register online at www.pclibraries.ca, go to programs, click on Inventors @ Home.

March - Register by the 1st.
Pickup after the 9th.

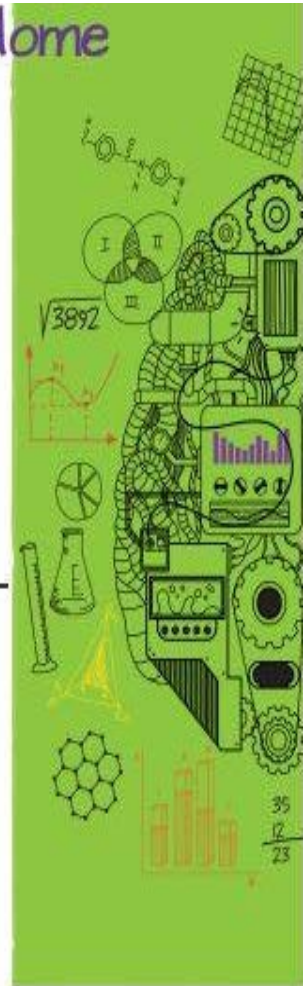
April - Register by the 1st.
Pickup after the 13th.

May - Register by the 1st.
Pickup after the 11th.

June - Register by the 1st.
Pickup after the 8th.



Parkland County Libraries
Duffield, Entwistle, Keephills, Tomahawk, Wabamun
www.pclibraries.ca
Facebook: @pclibraries



Walking Book Clubs

Walking Book Club

Book Perks ~ Walking Book Club



Adults, registration required

Chickakoo Lake - Every Wednesday, 10:00-11:00am (next meetup Sept 30)

Hasse Lake - Every second Saturday, 10:00-11:00am (first meetup Oct. 3)

Walking Book Clubs' IMPACT

"This was a wonderful initiative in so many ways. My personal appreciation for Chickakoo has a nearby recreation area has been re-ignited".

"IT WAS GREAT TO RECONNECT WITH OLD FRIENDS AND HAVE AN OPPORTUNITY TO MEET AWESOME NEW FRIENDS...OH AND THE BOOKS WERE INTERESTING TOO".

"The safe, outdoor activity is a definite sanity-saver".

"We have laughed, shared, dissected books and fostered new friendships...all made possible by the imagination and insight of our fearless library leaders".

"It isn't an understatement to claim that because of this club my sanity may have been saved during this time. I live alone. I would have never met so many like minded people otherwise. Thank you so much".

Puzzle Exchanges

We have an assortment of puzzles that patrons can borrow

Participants of our walking book clubs have started bringing their own puzzles and exchanging them with others

Suggestions for various types of puzzles by participants are being noted by staff, including borderless, 2000 piece, and escape puzzles.



New Podcast!

“Small Town Banter” with hosts Britney Robinson and Lareina Lisitza.

Listen to the podcast on spotify here:

<https://anchor.fm/parklandcountylibrary>



Little Free Libraries

4 New Little Free Libraries:

- Moon Lake Community
- Fallis
- Chickakoo Recreation Area
- Glowing Embers RV Park

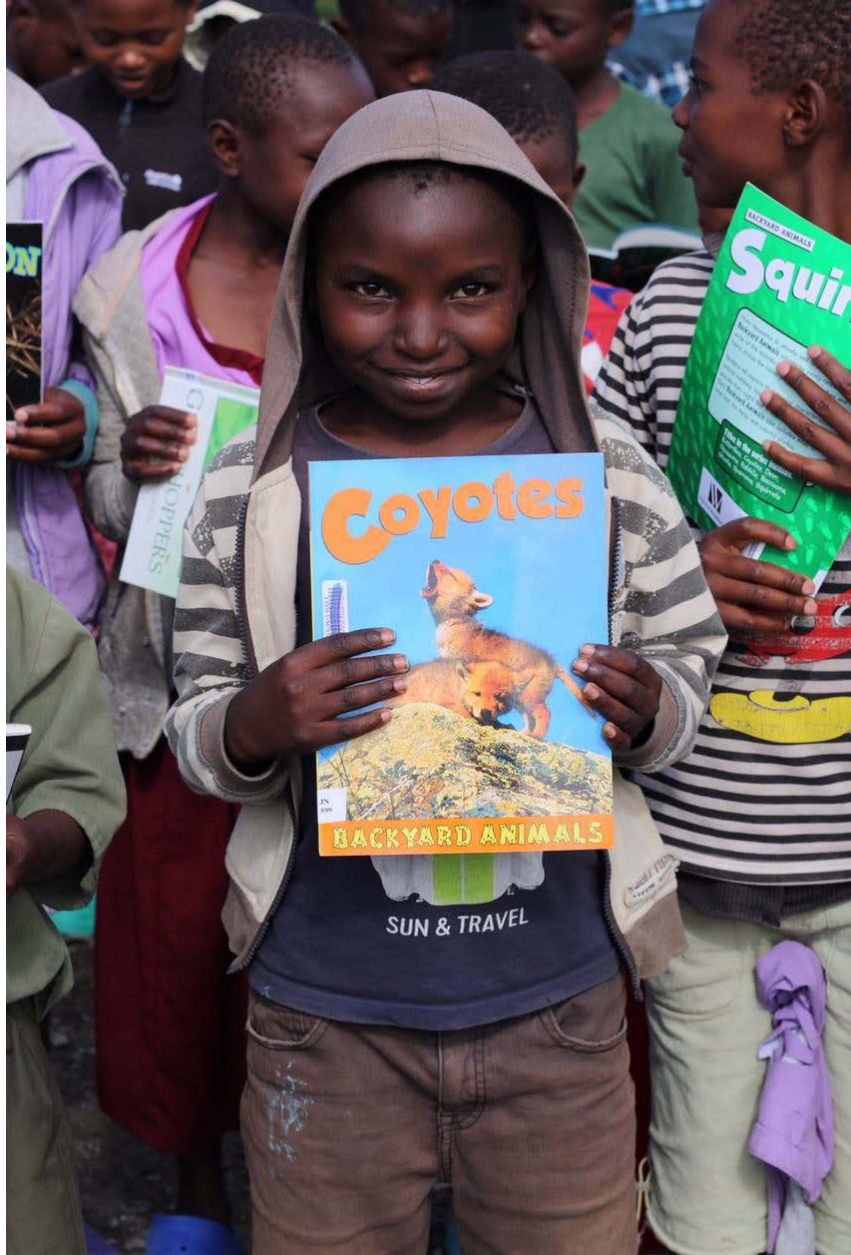


OUTREACH: Paul First Nation





Our weeded non fiction materials assisted the Fiwagoh Orphanage, a government registered orphanage that houses 287 total orphans, abandoned and street and vulnerable children in Kenya, East Africa.



Silver Lining

- Reducing barriers
- More than just a building
- Relationship with patrons and residents
- Busy hands, busy minds
- Utilizing the Recreational Areas and Trails within Parkland County
- Collection – curated orders for patrons

Rolling Budget

PARKLAND COUNTY LIBRARY BOARD ROLLING BUDGET 2021 TO 2025

	Dec YTD 2020 Actuals	Do Not Change				
		2021 Budget	2022 Budget	2023 Budget	2024 Budget	2025 Budget
Assumption						
Population	32,097	32,097	32,097	32,097	32,097	32,097
Per Capita Parkland County	-	26.73	26.92	26.98	26.98	26.98
Per Capita Provincial Grant	5.29	5.27	5.53	5.53	5.53	5.53
REVENUE						
4407 Fees (Yoga/Lego)	1,509	900	1,500	900	900	900
4548 Interest	2,285	3,500	3,000	3,500	3,500	3,500
4900 Misc. Revenue (Lost Books)	2,185	400	2,200	400	400	400
4910 Recovered Costs (Maker Space)	15,000	6,300	10,000	10,000	10,000	10,000
4810 Federal Grant Funding- DLEP	11,782	11,950	11,950	-	-	-
4820 Provincial Grant Funding	169,652	169,000	177,500	177,500	177,500	177,500
Provincial Grant Funding Entwistle Hub	653,472	-	-	-	-	-
4830 Parkland County						
Annual Operating Contribution	689,900	644,500	644,500	644,500	644,500	644,500
Equipment Replacement Plan Contribution	26,375	26,375	26,375	26,375	26,375	26,375
Entwistle Projected Costs	181,780	177,154	183,332	185,000	185,000	185,000
Future Library Space Contribution	10,000	10,000	10,000	10,000	10,000	10,000
Total Parkland County Contribution	908,055	858,029	864,207	865,875	865,875	865,875
TOTAL REVENUE	1,763,940	1,050,079	1,070,357	1,058,175	1,058,175	1,058,175
EXPENSES						
Library Director & Manager						
5010 Wage/Salaries (County Labor incl benefits)	174,856	169,978	177,038	178,520	180,952	181,793
5101 Travel & Vehicle Rental	2,755	13,570	13,774	13,911	14,050	14,191
5516 Memberships	208	300	300	300	300	300
5520 Telephone/Computer Supplies	3,557	4,040	4,040	4,080	4,121	4,162
5791 Other Fees/Work Alone	282	1,600	1,600	1,616	1,632	1,648
8201 Transfers to PC Entwistle	739,641					
5920 Conferences	933	2,000	2,000	2,000	2,000	2,000
5545 Employee Meals	235	-	200	200	200	200
6510 Supplies	4,477	2,000	2,000	2,020	2,040	2,000
	926,944	193,488	200,952	202,648	205,296	206,295
Outlet Libraries						
5010 Wage/Salaries (County Labor incl benefits)	174,271	290,577	313,046	316,176	319,338	322,532
Summer Student Program	-	-	14,000	14,000	14,000	14,000
5530 Travel (Mileage)	7,473	14,682	15,196	15,348	15,501	15,656
5516 Memberships/Prof fees	436	2,000	2,000	2,000	2,000	2,000
Staff Service Awards			825	150	250	200
5605 Training & Professional Development	6,431	8,030	14,107	14,524	14,955	15,401
5515 Conferences	-	700	700	700	700	700
5616 Events	-	150	150	150	150	150
5620 Telephone - Keephills/Entwistle	988	400	1,300	1,300	1,300	1,300
Keephills Operating Costs - Janitorial	-	9,000	9,000	9,000	9,000	9,000

Rolling Budget

	Wabamum Janitorial/Snow Removal	-		2,400	2,400	2,400	2,400
	Entwistle Project Costs Utilities	-	20,000	20,000	20,000	20,000	20,000
5970	Insurance	2,349	1,200	2,500	2,500	2,500	2,500
6510	Supplies (magazine subscriptions, games)		1,500	1,500	1,500	1,500	1,500
5736	Cell Phone Allowance	1,944	3,300	3,300	3,300	3,300	3,300
	Work Alone monitoring						
5791	Other Fees (zumba, yoga class instruction etc)	47,319	31,250	34,233	34,575	34,921	35,270
5655	Advertising -(Guide)	2,705	2,500	2,500	2,500	2,500	2,500
5830	Software Subscriptions/Licenses	3,463	1,750	3,500	3,500	3,500	3,500
5835	Janitorial - Entwistle	-	9,398	9,492	9,587	9,683	9,780
5920	Rentals - Other	100	650	200	200	200	200
6560	Food/Refreshments	543	75	400	400	400	400
6960	Non-Capital Equipment	6,984	8,100	10,000	10,000	10,000	10,000
		255,006	405,262	460,349	463,811	468,099	472,288
Board Expenses							
5970	Food/Refreshments	-	1,000	1,000	1,000	1,000	1,000
5101	Employer Contributions	-	450	450	450	450	450
5050	Honorariums	15,114	20,000	20,000	20,000	20,000	20,000
5516	Memberships/Prof fees	306	400	400	400	400	400
5545	Board Meals	573	300	300	300	300	300
5605	Training & Professional Development	-	3,500	3,500	3,500	3,500	3,500
5616	Events - Staff Appreciation	-	3,400	3,400	3,400	3,400	3,400
5920	Conferences	-	175	175	175	175	175
5530	Travel (Mileage)	1,887	5,400	5,400	5,400	5,400	5,400
6525	Printing	-	100	100	100	100	100
6560	Postage & Office	409	12	500	500	500	500
6510	Supplies (magazine subscriptions)	1,266	580	1,200	1,200	1,200	1,200
8120	Non Profit Groups	371,418	371,001	344,372	344,372	344,372	344,372
9010	Bank Charge	398	625	400	400	400	400
9810	To Contingency	(3,066)					
		388,305	406,943	381,197	381,197	381,197	381,197
TOTAL EXPENSES							
		1,570,255	1,005,693	1,042,497	1,047,655	1,054,591	1,059,781
Reserves							
	Increase (decrease) in reserves	193,685	12,386	(6,315)	(33,030)	40,134	34,895
Total Expenditures Excluding Amortization							
		1,570,255	1,005,693	1,042,497	1,047,655	1,054,591	1,059,781
Excess (Shortfall) of Revenue over Exp							
		-	32,000	34,175	43,550	(36,550)	(36,500)
Capital							
	Books	45,849	32,000	34,175	43,550	36,550	36,500
Excess Revenue over Expenditures							
		(45,849)	0	(0)	0	(0)	(0)

Grants

FCSS Mental Health

Summer Student – Canada Summer Jobs

Digital Literacy Exchange Program

Champions of Parkland County Libraries Society – Advocacy and Fundraising

Library Board Accomplishments



DEALING WITH
CRISIS SITUATIONS;
PLSB WEBINARS



CHAMPIONS
SOCIETY



POLICY COMMITTEE



PROVINCIAL
GUIDELINES



PLAN OF SERVICE
2021-2025

Going Forward

- Wabamun Library location
- Libraries housed in schools
- Technology advancements
- Providing virtual alternatives
 - Zoom meetings, exam proctoring, distant learning,
- Mental Health Initiatives



Questions?

“The only thing that you absolutely have to know, is the location of the library.”

— **Albert Einstein**