



Agenda

Purpose:

Present the Tri-Municipal Regional Plan report to Council.

Topics:

- Project Background, Purpose, Goals and Anticipated Outcomes
- Governance
- Continuing the Collaboration Journey
- Pathway to the Tri-Municipal Regional Plan
- Investment Packages Structure
- Moving Forward
- Q & A



Dave McGarva

Tantus



Project Background

- All three municipalities committed to the development of a Tri- Municipal Regional Plan
- In January 2019, all Tri-Municipal Region members signed a joint letter of intent
- Funding was secured from Western Economic Diversification in early 2019, and work continued into 2021 on the plan's development



Project Purpose and Goals

- The three municipalities seek to foster a vibrant, growing, diverse and inclusive Tri-Municipal Region
- The aim is to improve governance, service delivery, fiscal capacity and economic prosperity for the benefit of the region's citizens
- This important initiative looks at opportunities to enhance the value and benefit of services and programs to citizens
- It involves determining where program and service alignment could be advanced to support community progress



Anticipated Outcomes

- This plan will enable the partners to strategically align planning for growth and service delivery to achieve mutual benefit for their citizens
- It will enable each partner municipality to individually and collectively achieve heightened local, regional and global competitiveness
- It will provide short-, medium- and long-term recommendations that may be implemented over the next 40 years





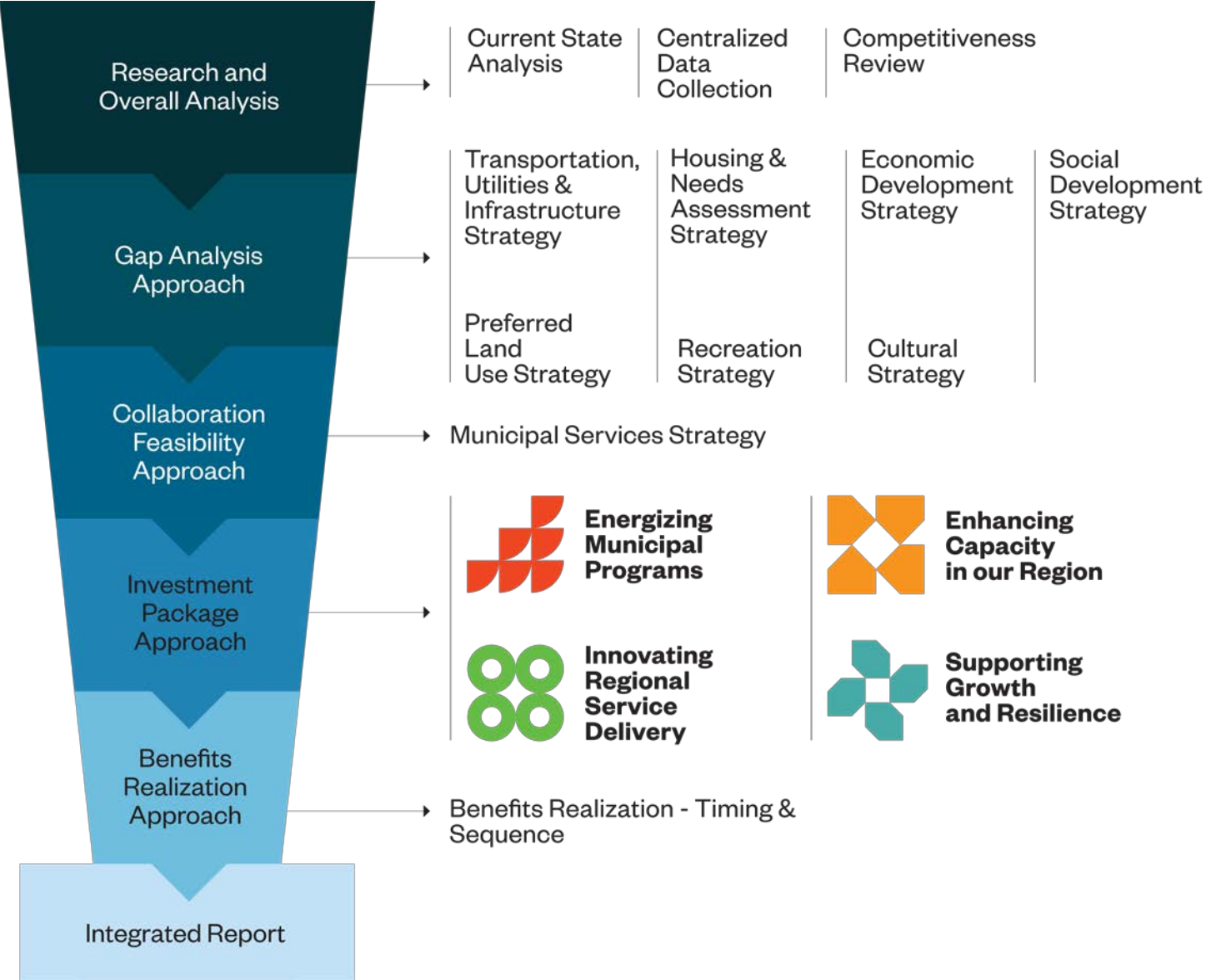
Continuing the Collaboration Journey



- The Town of Stony Plain, City of Spruce Grove and Parkland County have a strong history of partnership and collaborative service delivery
- All three municipalities have successfully collaborated on significant projects and initiatives in the past



Pathway to the Tri-Municipal Regional Plan





Investment Packages Structure

	Delivering Value Through Municipal Programs	Enabling Regional Community Excellence
Leveraging our Legacy	Energizing Municipal Programs	Enhancing Capacity in our Region
Priming our Future	Innovating Regional Service Delivery	Supporting Growth and Resilience

Investment Packages Structure

- 257 projects resulted from the Secondary Strategies
- CAOs scored projects through the following scale

Definitions		#	%
Strong Yes	All municipalities see council interest or policy on the issue.	18	7.0%
Yes	All municipalities at least neutral with one or more seeing council interest or policy on the issue.	99	38.9%
Weak No	All municipalities are neutral.	20	7.8%
Bilateral	Two municipalities see council interest or policy on the issue with one sensing council opposition or policy against an issue.	22	8.6%
Decline	Two or more sensing council opposition or policy against an issue.	97	37.7%

- 117 projects are 'Strong Yes' and 'Yes'
- Bilateral projects will be provided but are not part of the Integrated Report

Energizing Municipal Programs



- These projects build on existing investments, programs and staff experience in the municipalities
- The aim is to extend current service delivery and operations collaboratively
- Total projects = 38

Enhancing Capacity in Our Region



- This involves building on existing municipal delivery mechanisms supporting other organizations that provide service and value to residents
- The aim is to build on current collaborative efforts to enhance these organization's capacities
- Total projects = 20

Supporting Growth and Resilience



- This strategy focuses on the external agencies within the municipalities
- It presents projects that will provide new mechanisms for capacity building
- Total projects = 23

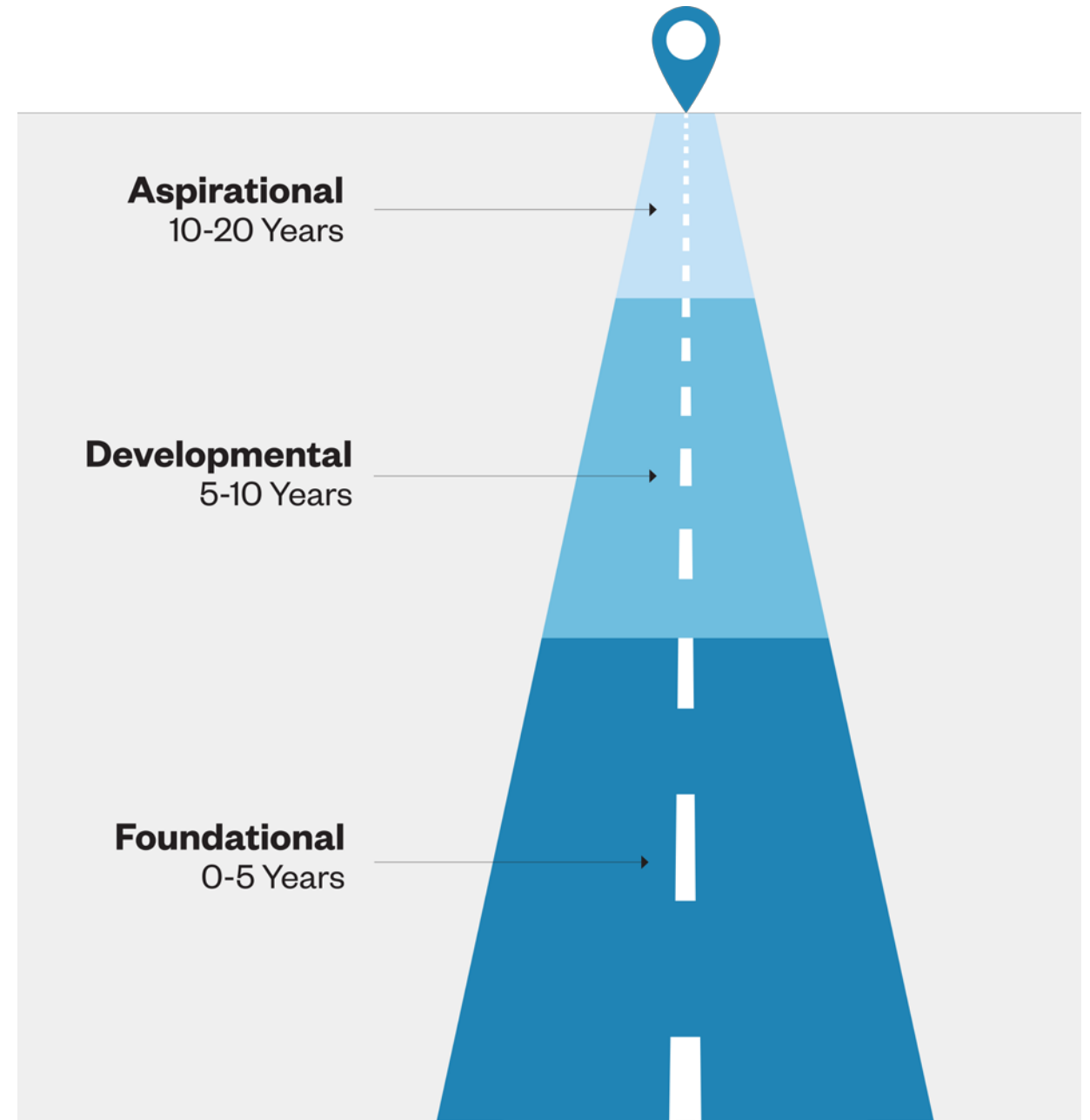
Innovating Regional Service Delivery



- This strategy involves applying more consideration to collaboration for municipally-delivered services
- It includes working together to enhance the value of services provided to municipal clients and internal organizational departments
- Total projects = 36



Moving Forward



Tri-Municipal Regional Plan



Questions